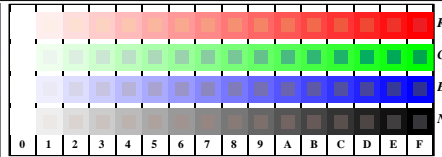


http://farbe.li.tu-berlin.de/TI85/TI85LON1.TXT /.PS; inizio dell'output
N: nessuna linearizzazione 3D (OL) nel file (F) o PS-startup (S), pagine 1/1

Vedi file simili: http://farbe.li.tu-berlin.de/TI85/TI85.HTM
informazioni tecniche: http://www.ps.bam.de o http://130.149.60.45/~farhnetnik



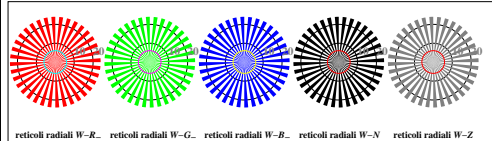
T1850-3, Fig. D1W--: motivo floreale, 14 prova colori CIE 1+2 + 16 grigio passi (sf); ; PS 4 colorimage



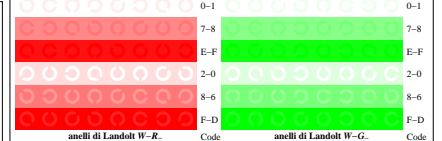
T1851-1, Fig. D4W--: 16 equidistante passi W-R.; W-G.; W-B.; W-N.; rgb/cmy0 set/rgb/cmyk/color

+-.:				l m n o					p q r s					t u v w					x y z					6	N R G B Z	8	N R G B Z	10	N R G B Z
------	--	--	--	---------	--	--	--	--	---------	--	--	--	--	---------	--	--	--	--	-------	--	--	--	--	---	-----------	---	-----------	----	-----------

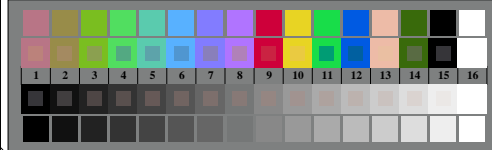
T1851-3, Fig. D5W--: codice i Landolt anelli N, R.; G.; B.; Z; PS operator rgb->rgb_setrgbcolor



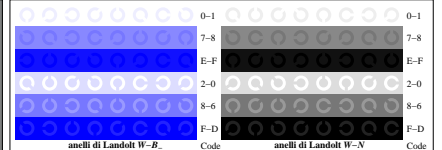
T1850-5, Fig. D2W--: reticoli radiali W-R.; W-G.; W-B.; W-N; PS operator rgb->rgb_setrgbcolor



T1851-5, Fig. D6W--: anelli di Landolt W-R.; W-G.; PS operator rgb_setrgbcolor



T1850-7, Fig. D3W--: 14 prova colori CIE 1+2 + 16 grigio passi (sf); rgb/cmy0 set/rgb/cmyk/color



T1851-7, Fig. D7W--: anelli di Landolt W-B.; W-N; PS operator rgb_setrgbcolor

Grafico TUB-TI85; 4(ISO/IEC 15775 & ISO/IEC TR 24705)
Tavola dei colori cromatici RGB

Input: rgb/cmyk -> w/rgb/cmyk_
Output: nessun cambiamento

iscrittione TUB: 20160501-TI85/TI85LON1.TXT /.PS
Applicazione per la misura dell' output output nella stampa di offSet
TUB materiale: code=rh4da

