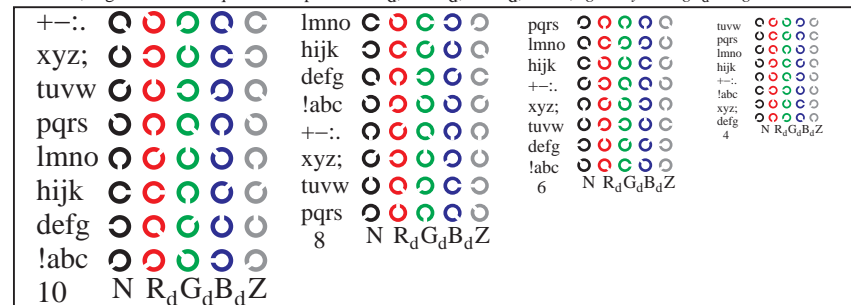
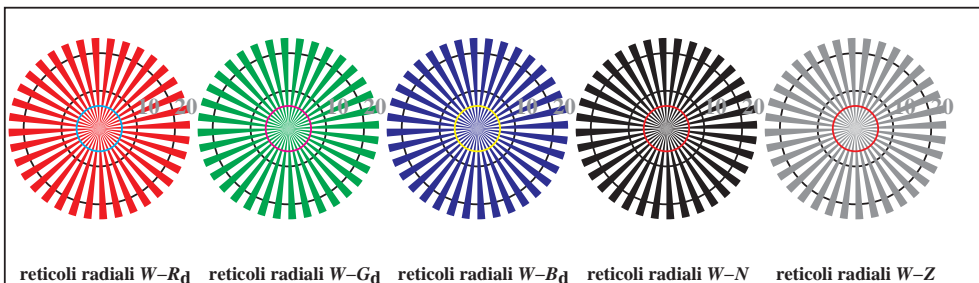


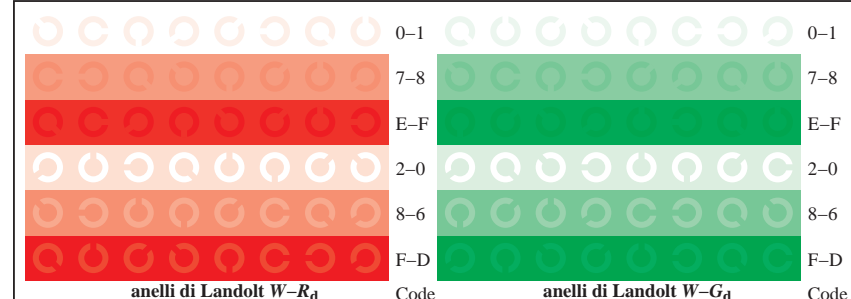
TI851-1, Fig. D4Wd: 16 equidistante passi $W-R_d$; $W-G_d$; $W-B_d$; $W-N$; $rgb/cmy0 \rightarrow rgb_d$ setrgbcolor



TI851-3, Fig. D5Wd: codice i Landolt anelli N ; R_d ; G_d ; B_d ; Z ; PS operator $rgb \rightarrow rgb_d$ setrgbcolor



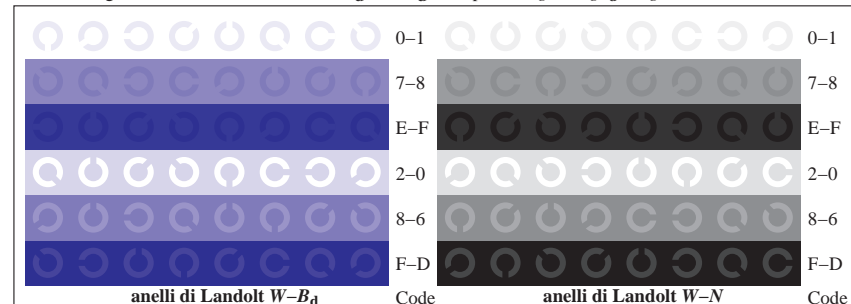
TI850-5, Fig. D2Wd: reticoli radiali $W-R_d$; $W-G_d$; $W-B_d$; $W-N$; PS operator $rgb \rightarrow rgb_d$ setrgbcolor



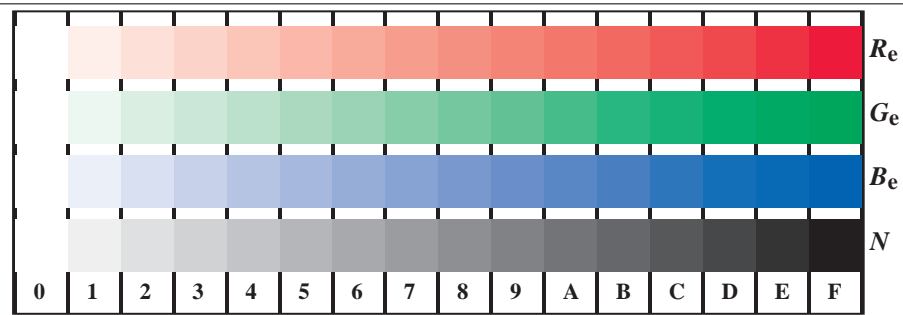
TI851-5, Fig. D6Wd: anelli di Landolt $W-R_d$; $W-G_d$; PS operator $rgb \rightarrow rgb_d$ setrgbcolor



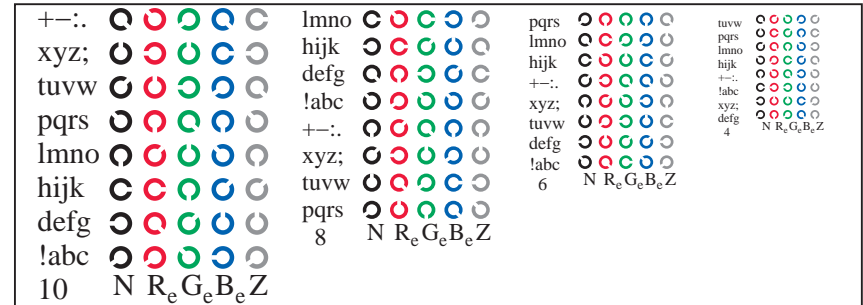
TI850-7, Fig. D3Wd: 14 prova colori CIE i 2 + 16 grigio passi (sf); $rgb/cmy0 \rightarrow rgb_d$ setrgbcolor



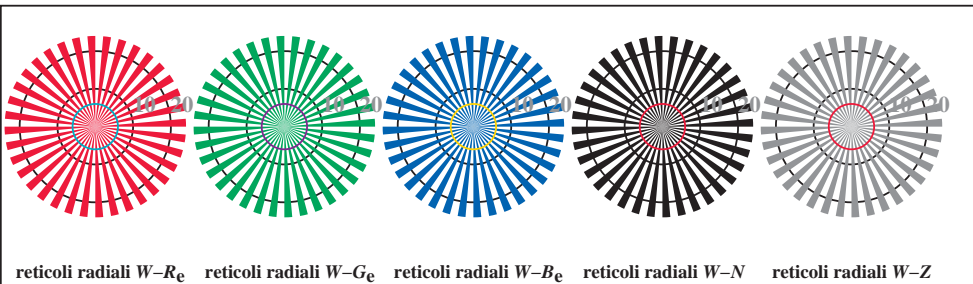
TI851-7, Fig. D7Wd: anelli di Landolt $W-B_d$; $W-N$; PS operator $rgb \rightarrow rgb_d$ setrgbcolor



TI851-1, Fig. D4We: 16 equidistante passi $W-R_e$; $W-G_e$; $W-B_e$; $W-N$; $rgb/cmy0 \rightarrow rgb_e$ *setrgbcolor*



TI851-3, Fig. D5We: codice i Landolt anelli N ; R_e ; G_e ; B_e ; Z; PS operator $rgb \rightarrow rgb_e$ *setrgbcolor*

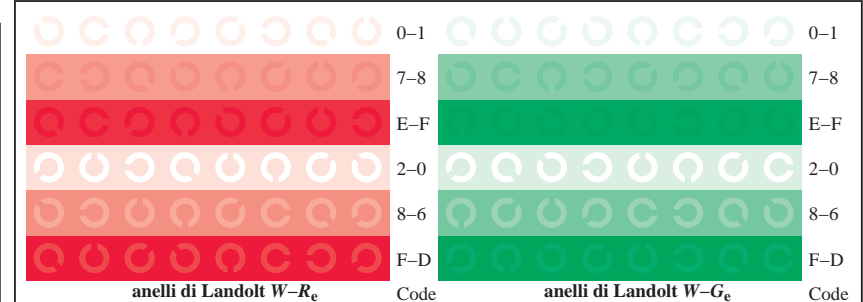


reticoli radiali $W-R_e$ reticoli radiali $W-G_e$ reticoli radiali $W-B_e$ reticoli radiali $W-N$ reticoli radiali $W-Z$

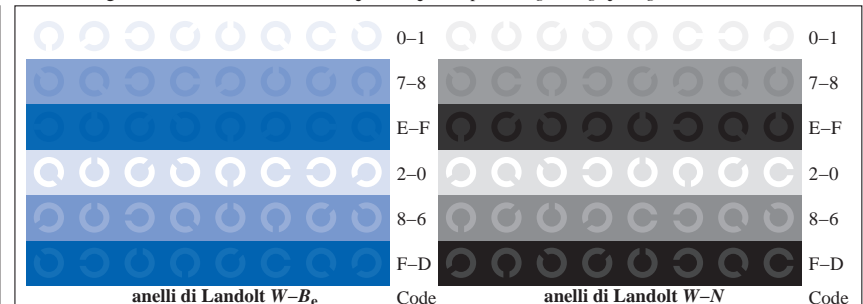
TI850-5, Fig. D2We: reticoli radiali $W-R_e$; $W-G_e$; $W-B_e$; $W-N$; PS operator $rgb \rightarrow rgb_e$ *setrgbcolor*



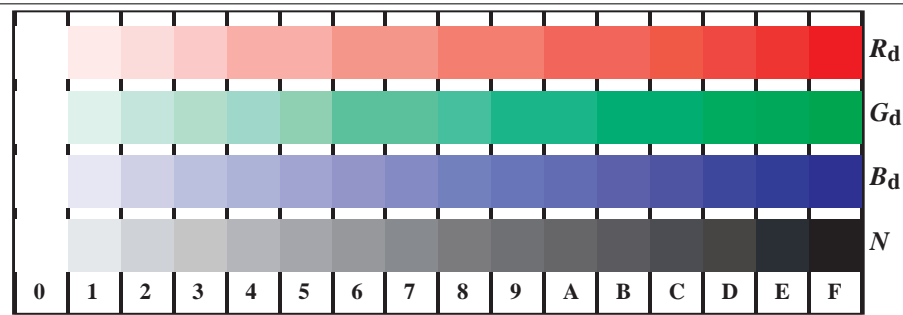
TI850-7, Fig. D3We: 14 prova colori CIE i 2 + 16 grigio passi (sf); $rgb/cmy0 \rightarrow rgb_e$ *setrgbcolor*



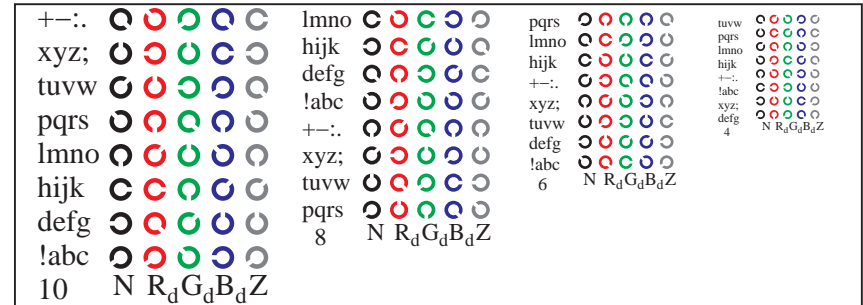
TI851-5, Fig. D6We: anelli di Landolt $W-R_e$; $W-G_e$; PS operator $rgb \rightarrow rgb_e$ *setrgbcolor*



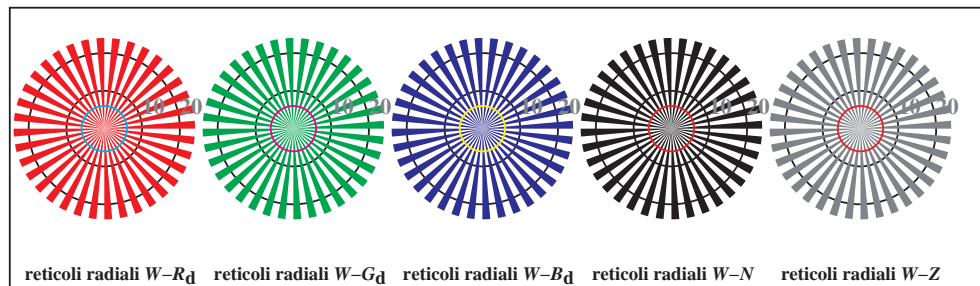
TI851-7, Fig. D7We: anelli di Landolt $W-B_e$; $W-N$; PS operator $rgb \rightarrow rgb_e$ *setrgbcolor*



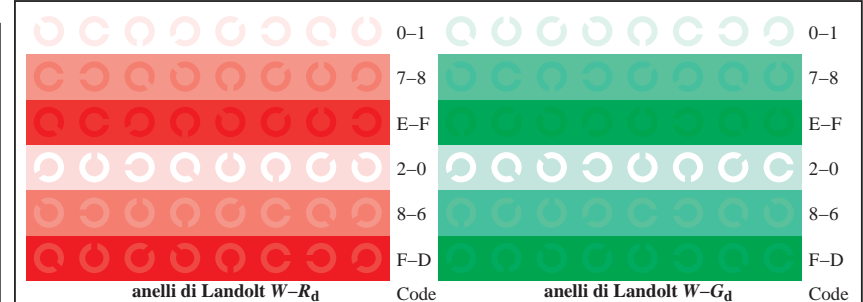
TI851-1, Fig. D4Wdd: 16 equidistante passi $W-R_d$; $W-G_d$; $W-B_d$; $W-N$; $rgb/cmy0 \rightarrow rgb_{dd}$ *setrgbcolor*



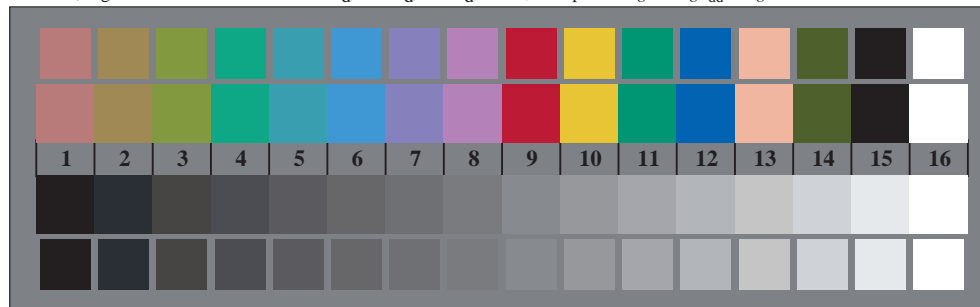
TI851-3, Fig. D5Wdd: codice i Landolt anelli N ; R_d ; G_d ; B_d ; Z ; PS operator $rgb \rightarrow rgb_{dd}$ *setrgbcolor*



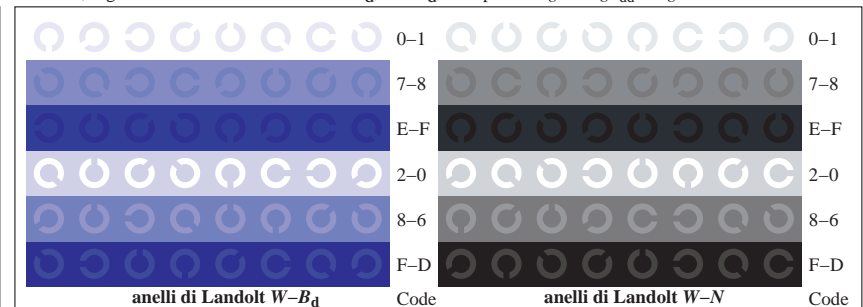
TI850-5, Fig. D2Wdd: reticoli radiali $W-R_d$; $W-G_d$; $W-B_d$; $W-N$; PS operator $rgb \rightarrow rgb_{dd}$ *setrgbcolor*



TI851-5, Fig. D6Wdd: anelli di Landolt $W-R_d$; $W-G_d$; PS operator $rgb \rightarrow rgb_{dd}$ *setrgbcolor*



TI850-7, Fig. D3Wdd: 14 prova colori CIE i 2 + 16 grigio passi (sf); $rgb/cmy0 \rightarrow rgb_{dd}$ *setrgbcolor*



TI851-7, Fig. D7Wdd: anelli di Landolt $W-B_d$; $W-N$; PS operator $rgb \rightarrow rgb_{dd}$ *setrgbcolor*

