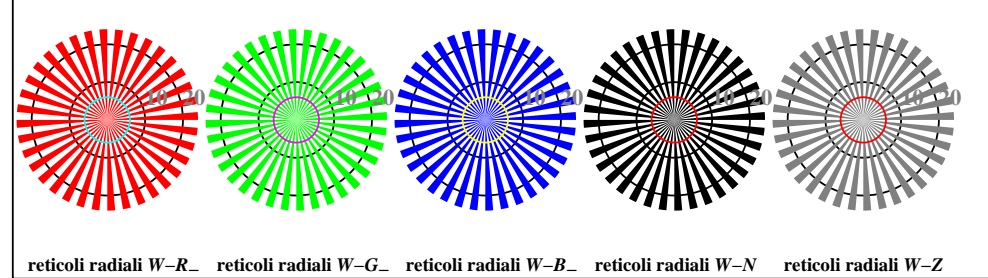


vedi file simili: http://farbe.li.tu-berlin.de/TI84/TI84.HTM
informazioni tecniche: http://www.ps.bam.de o http://130.149.60.45/~farbmetrik

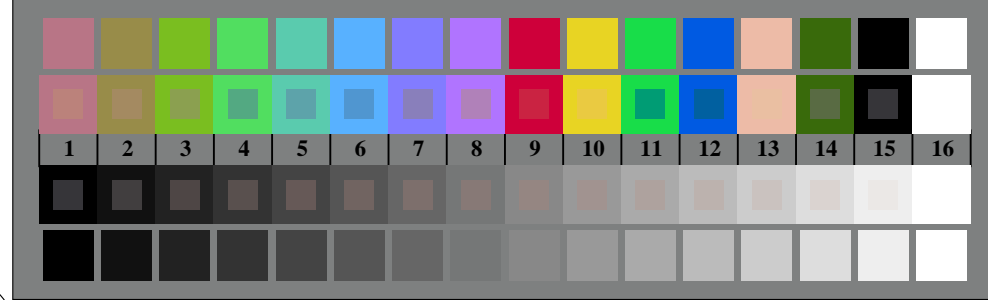
iscrizione TUB: 20160501-TI84/TI84LONP.PDF /.PS
Applicazione per la misura dell'output output nella stampa di offset
TUB materiale: code=rh4ta



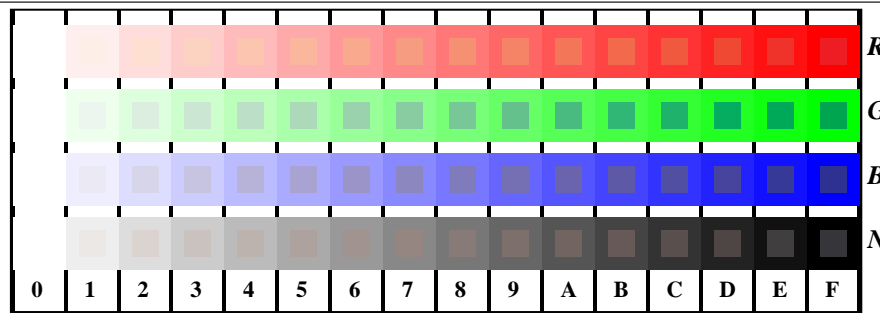
TI840-3, Fig. D1W-: motivo floreale, 14 prova colori CIE i 2 + 16 grigio passi (sf); ; PS 4 colorimage



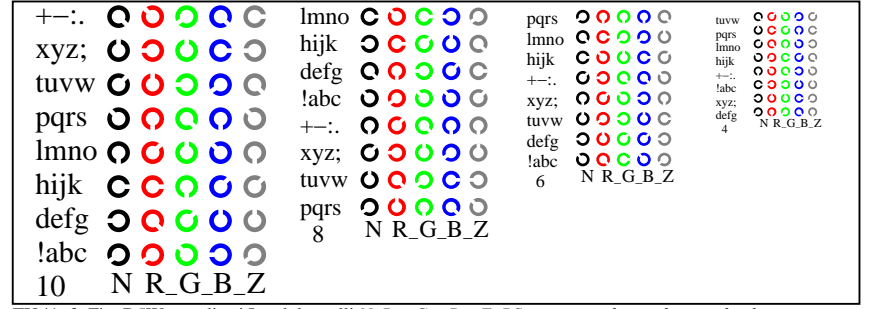
TI840-5, Fig. D2W-: reticoli radiali W-R-, W-G-, W-B-, W-N; PS operator rgb->rgb_setrgbcolor



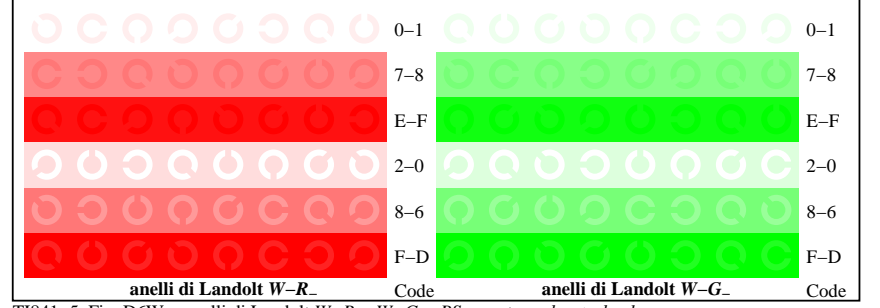
TI840-7, Fig. D3W-: 14 prova colori CIE i 2 + 16 grigio passi (sf); rgb/cmy0 set(rgb/cmyk)color



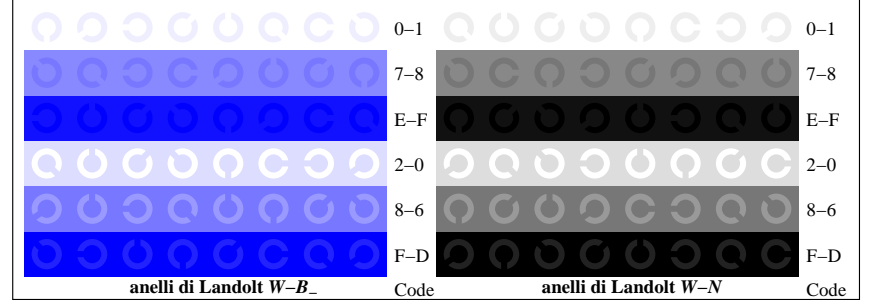
TI841-1, Fig. D4W-: 16 equidistante passi W-R-, W-G-, W-B-, W-N; rgb/cmy0 set(rgb/cmyk)color



TI841-3, Fig. D5W-: codice i Landolt anelli N; R-, G-, B-, Z; PS operator rgb->rgb_setrgbcolor



TI841-5, Fig. D6W-: anelli di Landolt W-R-, W-G-, Z; PS operator rgb_setrgbcolor



TI841-7, Fig. D7W-: anelli di Landolt W-B-, W-N; PS operator rgb_setrgbcolor

