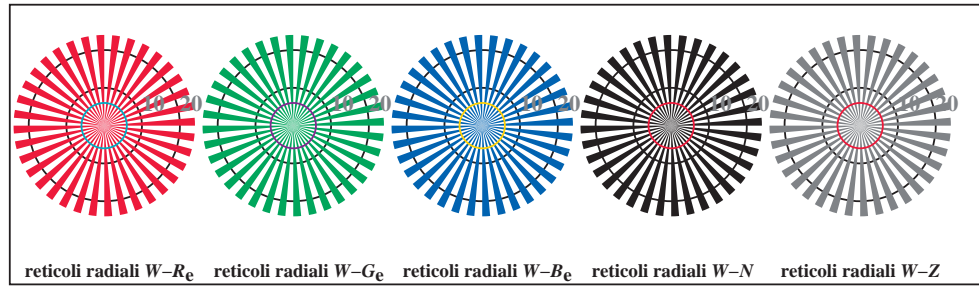
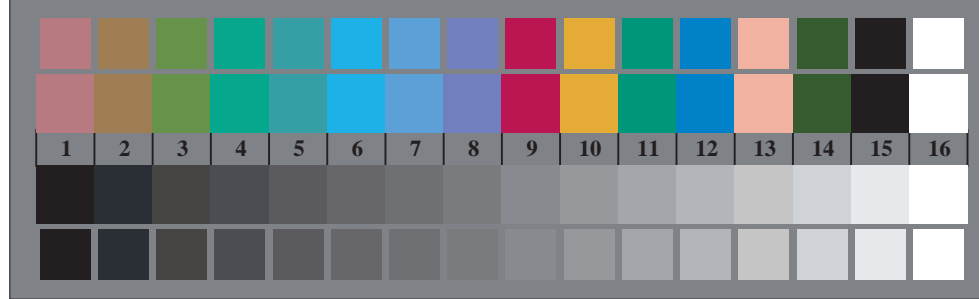




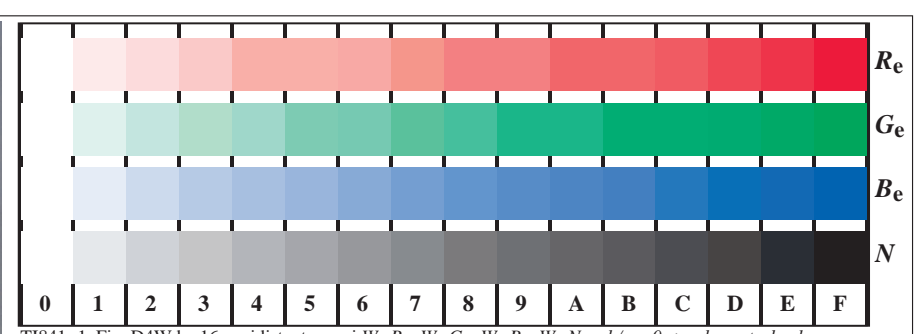
TI840-3, Fig. D1Wde: motivo floreale, 14 prova colori CIE i 2 + 16 grigio passi (sf); : PS 4 colorimage



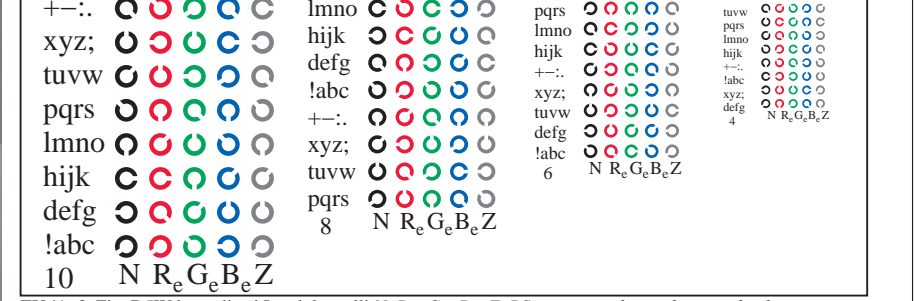
TI840-5, Fig. D2Wde: reticoli radiali  $W-R_e$ ;  $W-G_e$ ;  $W-B_e$ ;  $W-N$ ; PS operator  $rgb \rightarrow rgb_{de}$  setrgbcolor



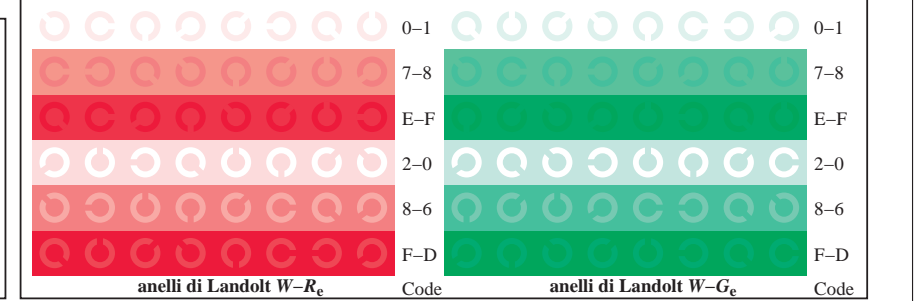
TI840-7, Fig. D3Wde: 14 prova colori CIE i 2 + 16 grigio passi (sf);  $rgb/cmy0 \rightarrow rgb_{de}$  setrgbcolor



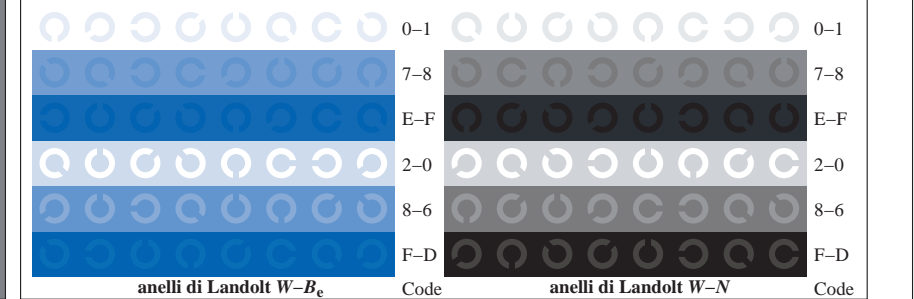
TI841-1, Fig. D4Wde: 16 equidistante passi  $W-R_e$ ;  $W-G_e$ ;  $W-B_e$ ;  $W-N$ ;  $rgb/cmy0 \rightarrow rgb_{de}$  setrgbcolor



TI841-3, Fig. D5Wde: codice i Landolt anelli  $N$ ;  $R_e$ ;  $G_e$ ;  $B_e$ ;  $Z$ ; PS operator  $rgb \rightarrow rgb_{de}$  setrgbcolor



TI841-5, Fig. D6Wde: anelli di Landolt  $W-R_e$ ;  $W-G_e$ ; PS operator  $rgb \rightarrow rgb_{de}$  setrgbcolor



TI841-7, Fig. D7Wde: anelli di Landolt  $W-B_e$ ;  $W-N$ ; PS operator  $rgb \rightarrow rgb_{de}$  setrgbcolor