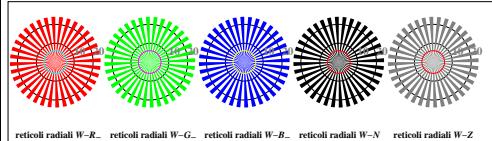


http://farbe.li.tu-berlin.de/TI81/TI81LON1.TXT /.PS; inizio dell'output  
N: nessuna linearizzazione 3D (OL) nel file (F) o PS-startup (S), pagine 1/1

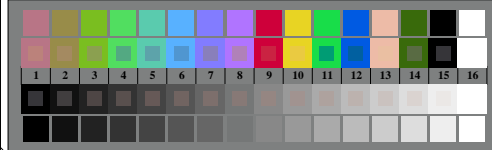
vedi file simili: http://farbe.li.tu-berlin.de/TI81/TI81LON1.TXT /.PS  
informazioni tecniche: http://www.ps.bam.de o http://130.149.60.45/~farbnetrik



T1810-3, Fig. D1W--: motivo floreale, 14 prova colori CIE 1+2 + 16 grigio passi (sf); ; PS operator 3 colorimage

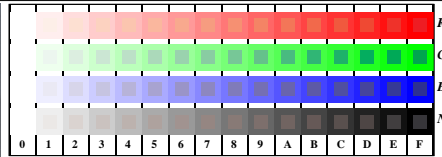


T1810-5, Fig. D2W--: reticoli radiali W-R., W-G., W-B., W-N, PS operator rgb->rgb\_setrgbcolor



T1810-7, Fig. D3W--: 14 prova colori CIE 1+2 + 16 grigio passi (sf); rgb/cmy0 set/rgb/cmykcolor

Grafico TUB-TI81; 4(ISO/IEC 15775 & ISO/IEC TR 24705)  
Tavola dei colori cromatici RGB



T1811-1, Fig. D4W--: 16 equidistante passi W-R.; W-G.; W-B.; W-N, rgb/cmy0 set/rgb/cmykcolor

