

http://farbe.li.tu-berlin.de/TI81/TI81LOFP.PDF /PS; inizio dell'output  
F: linearizzazione 3D TI81/TI81LI30FP.DAT nel file (F), pagine 1/18

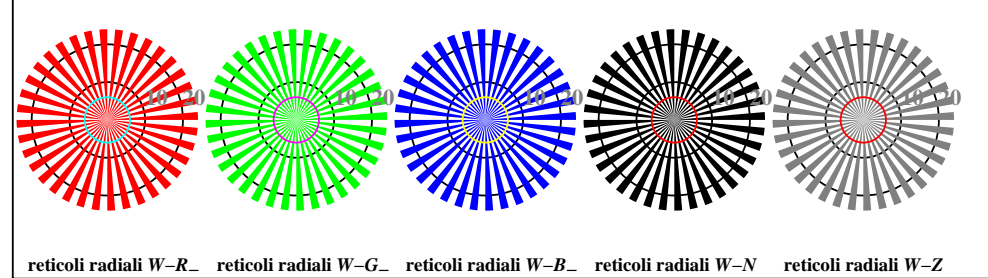
vedi file simili: <http://farbe.li.tu-berlin.de/TI81/TI81.HTM>  
informazioni tecniche: <http://www.ps.bam.de> o <http://130.149.60.45/~farbmetrik>

iscrizione TUB: 20160501-TI81/TI81LOFP.PDF /PS  
Applicazione per la misura dell'output display standard

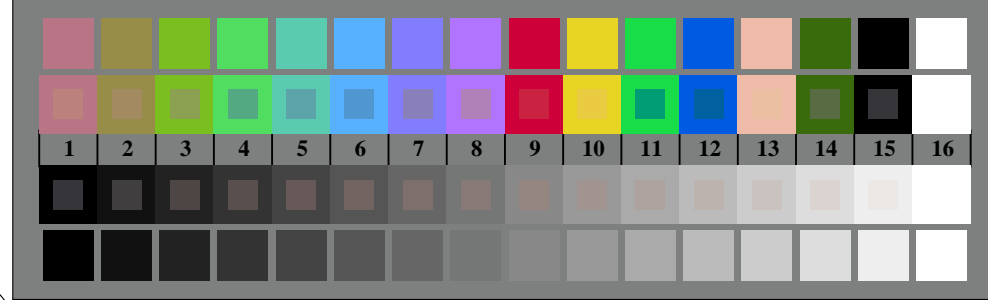
TUB materiale: code=rh4ta



TI810-3, Fig. D1W-: motivo floreale, 14 prova colori CIE i 2 + 16 grigio passi (sf); ; PS operator 3 colorimage

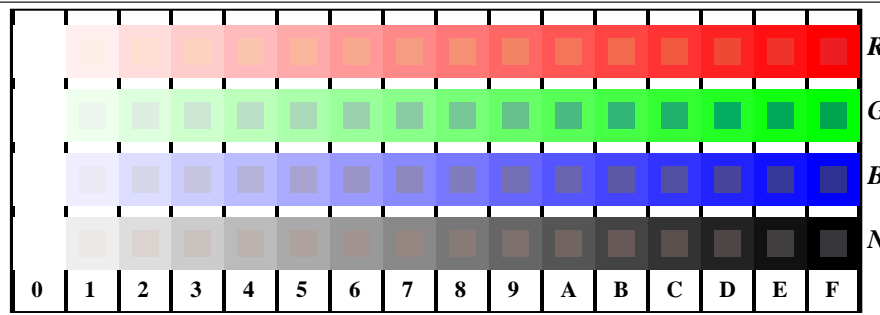


TI810-5, Fig. D2W-: reticoli radiali W-R\_.; W-G\_.; W-B\_.; W-N; PS operator rgb->rgb\_setrgbcolor

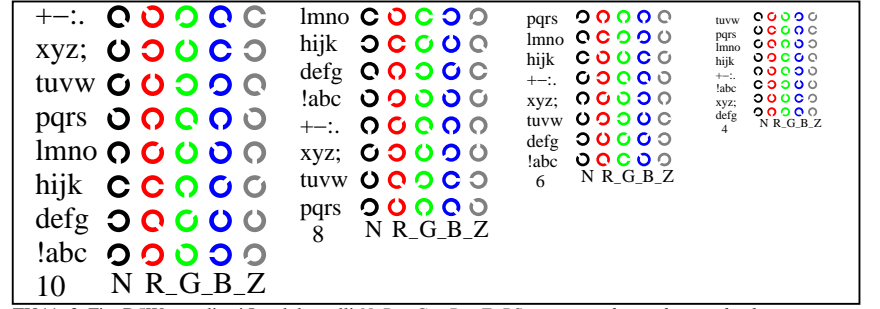


TI810-7, Fig. D3W-: 14 prova colori CIE i 2 + 16 grigio passi (sf); rgb/cmy0 set(rgb/cmyk)color

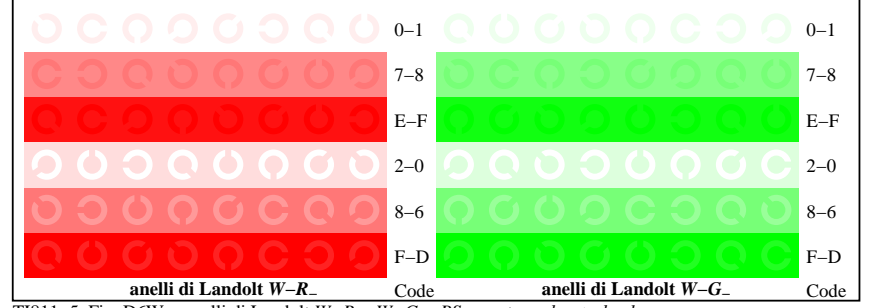
Grafico TUB-TI81; 4(ISO/IEC 15775 & ISO/IEC TR 24705)  
Tavola dei colori cromatici RGB



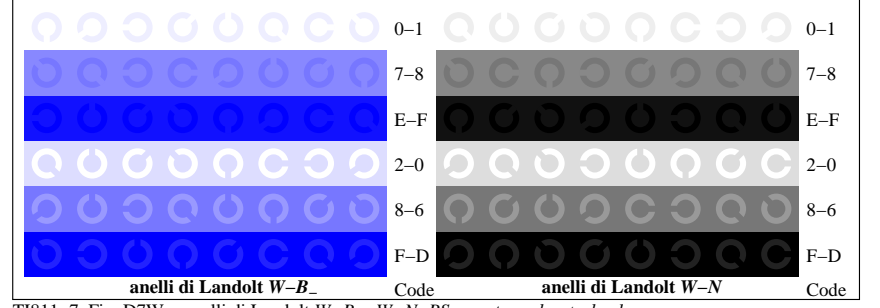
TI811-1, Fig. D4W-: 16 equidistante passi W-R\_.; W-G\_.; W-B\_.; W-N; rgb/cmy0 set(rgb/cmyk)color



TI811-3, Fig. D5W-: codice i Landolt anelli N; R\_.; G\_.; B\_.; Z; PS operator rgb->rgb\_setrgbcolor



TI811-5, Fig. D6W-: anelli di Landolt W-R\_.; W-G\_.; PS operator rgb\_setrgbcolor



TI811-7, Fig. D7W-: anelli di Landolt W-B\_.; W-N; PS operator rgb\_setrgbcolor

Input: rgb/cmyk -> w/rgb/cmyk\_  
Output: nessun cambiamento

