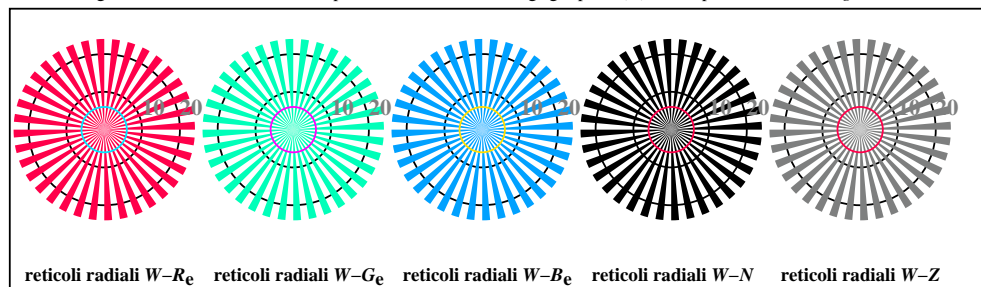
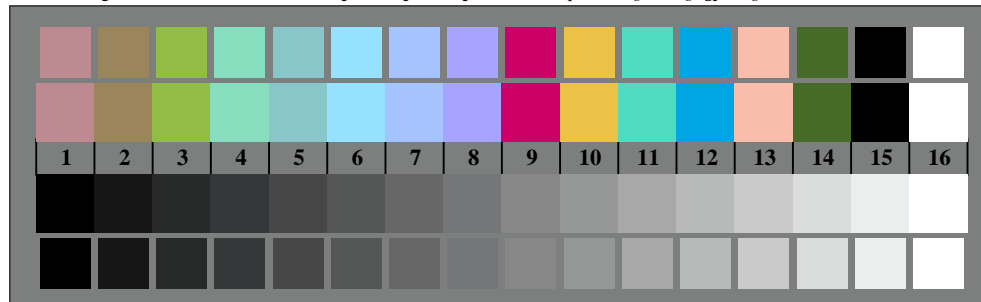




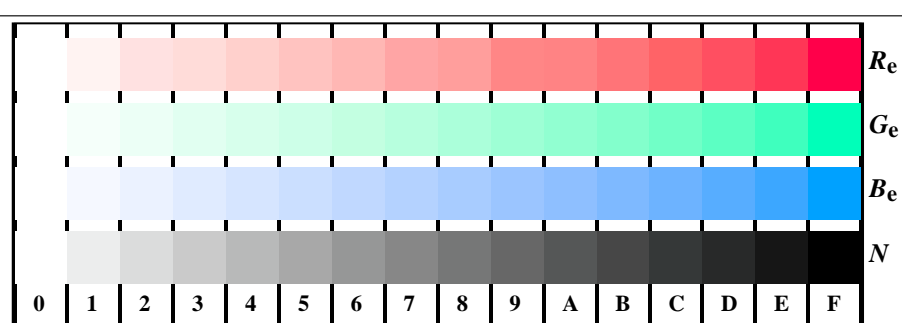
TI810-3, Fig. D1Wde: motivo floreale, 14 prova colori CIE i 2 + 16 grigio passi (sf); ; PS operator 3 colorimage



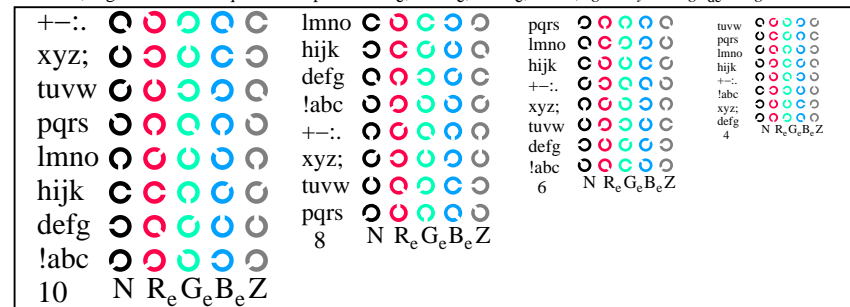
TI810-5, Fig. D2Wde: reticoli radiali $W-R_e$; $W-G_e$; $W-B_e$; $W-N$; PS operator $rgb \rightarrow rgb_{de}$ setrgbcolor



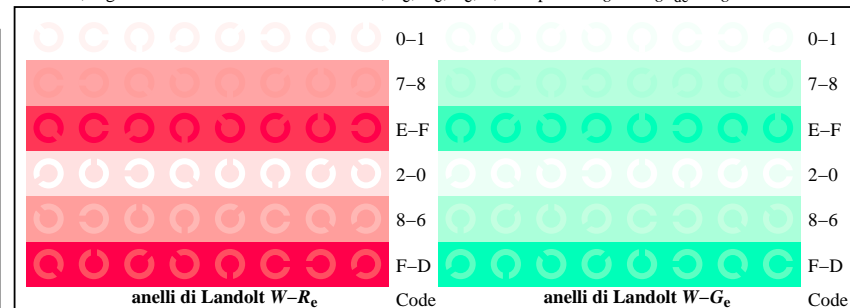
TI810-7, Fig. D3Wde: 14 prova colori CIE i 2 + 16 grigio passi (sf); $rgb/cmy0 \rightarrow rgb_{de}$ setrgbcolor



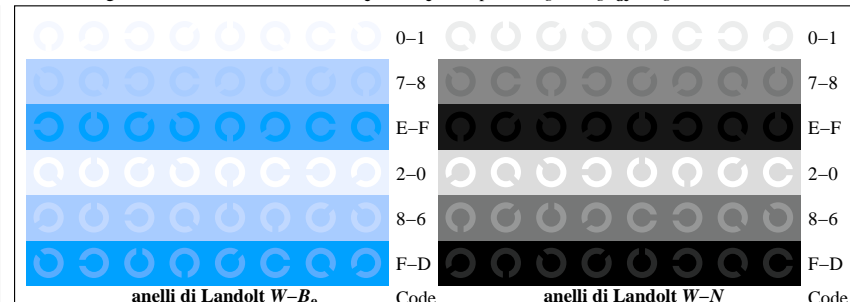
TI811-1, Fig. D4Wde: 16 equidistante passi $W-R_e$; $W-G_e$; $W-B_e$; $W-N$; $rgb/cmy0 \rightarrow rgb_{de}$ setrgbcolor



TI811-3, Fig. D5Wde: codice i Landolt anelli N; R_e ; G_e ; B_e ; Z; PS operator $rgb \rightarrow rgb_{de}$ setrgbcolor



TI811-5, Fig. D6Wde: anelli di Landolt $W-R_e$; $W-G_e$; PS operator $rgb \rightarrow rgb_{de}$ setrgbcolor



TI811-7, Fig. D7Wde: anelli di Landolt $W-B_e$; $W-N$; PS operator $rgb \rightarrow rgb_{de}$ setrgbcolor