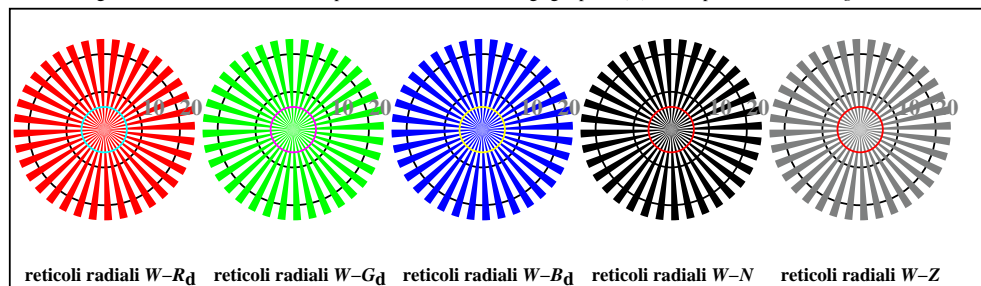




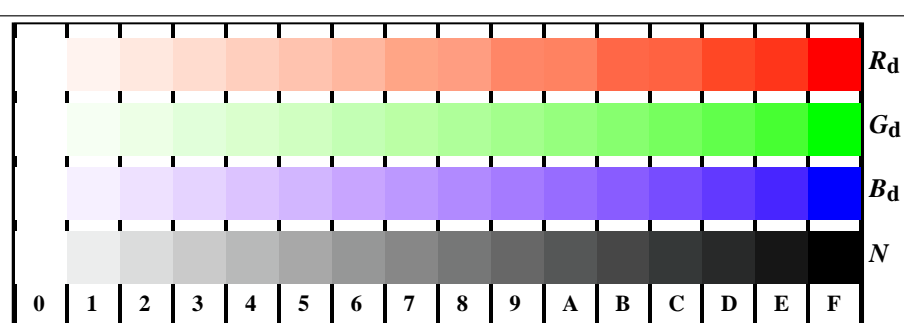
TI810-3, Fig. D1Wdd: motivo floreale, 14 prova colori CIE i 2 + 16 grigio passi (sf); ; PS operator 3 colorimage



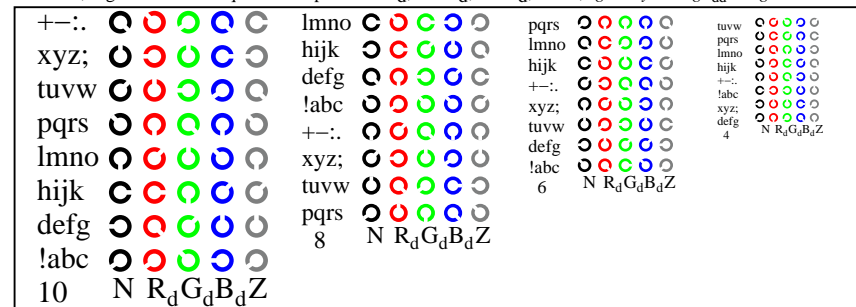
TI810-5, Fig. D2Wdd: reticoli radiali $W-R_d$; $W-G_d$; $W-B_d$; $W-N$; PS operator $rgb \rightarrow rgb_{dd}$ setrgbcolor



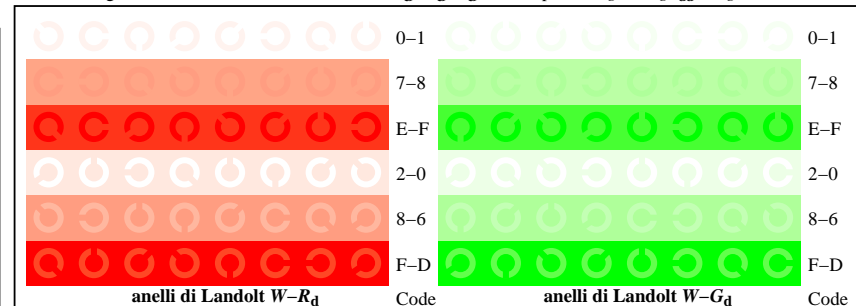
TI810-7, Fig. D3Wdd: 14 prova colori CIE i 2 + 16 grigio passi (sf); $rgb/cmy0 \rightarrow rgb_{dd}$ setrgbcolor



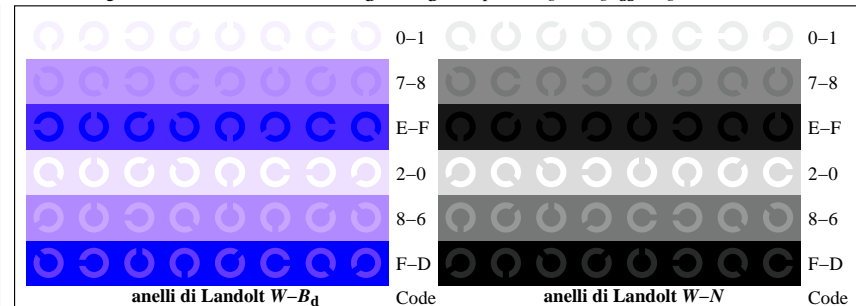
TI811-1, Fig. D4Wdd: 16 equidistante passi $W-R_d$; $W-G_d$; $W-B_d$; $W-N$; $rgb/cmy0 \rightarrow rgb_{dd}$ setrgbcolor



TI811-3, Fig. D5Wdd: codice i Landolt anelli N ; R_d ; G_d ; B_d ; Z ; PS operator $rgb \rightarrow rgb_{dd}$ setrgbcolor



TI811-5, Fig. D6Wdd: anelli di Landolt $W-R_d$; $W-G_d$; PS operator $rgb \rightarrow rgb_{dd}$ setrgbcolor



TI811-7, Fig. D7Wdd: anelli di Landolt $W-B_d$; $W-N$; PS operator $rgb \rightarrow rgb_{dd}$ setrgbcolor