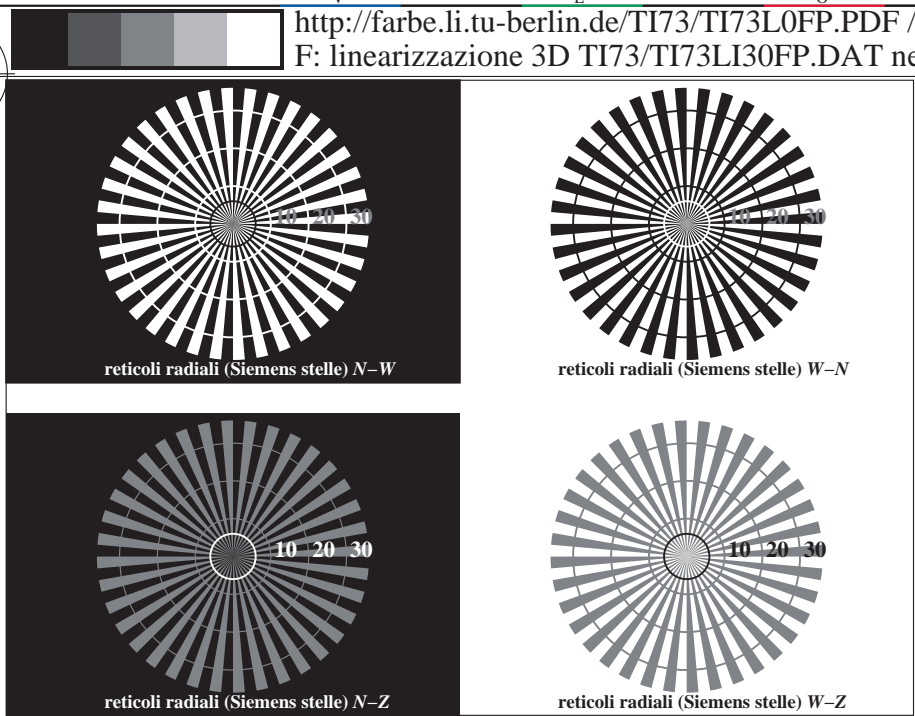
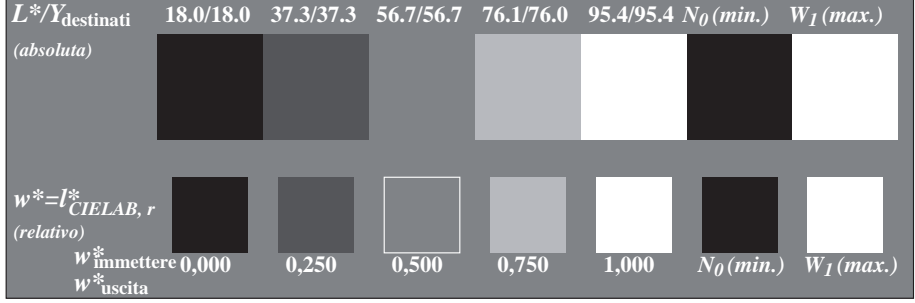


vedi file simili: http://farbe.li.tu-berlin.de/TI73/TI73.HTM
Informazioni tecniche: http://www.ps.bam.de o http://130.149.60.45/~farbmetrik

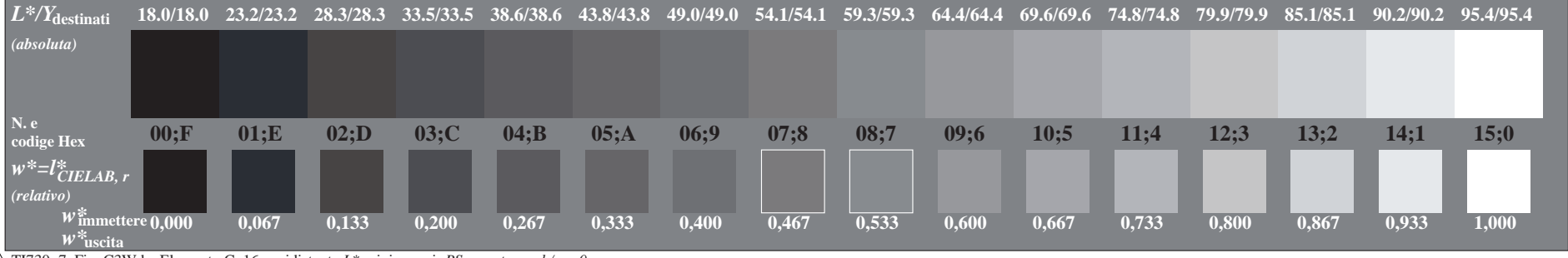
iscrizione TUB: 20160501-TI73/TI73L0FP.PDF /.PS
Applicazione per la misura dell'output nella stampa di offset, separazione cmy6* (CMYK*)
TUB materiale: code=rhata



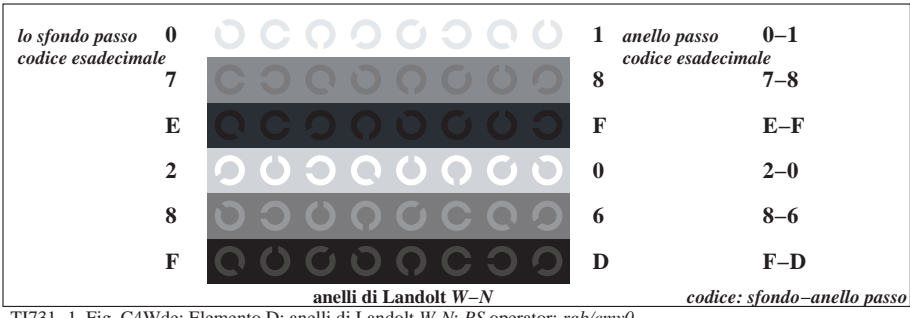
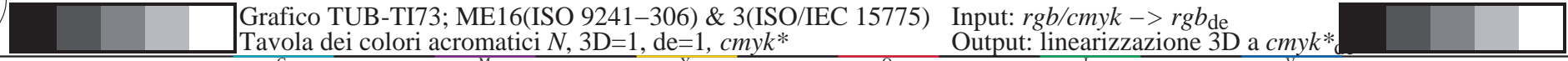
TI730-3, Fig. C1Wde: Elemento A: reticoli radiali N-W, W-N, N-Z i W-Z; PS operator: rgb/cmy0



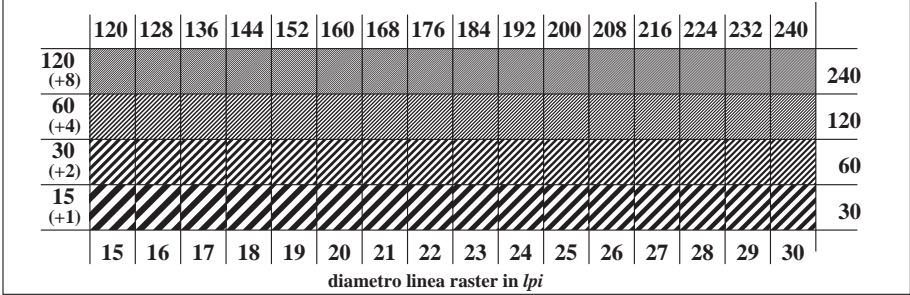
TI730-5, Fig. C2Wde: Elemento B: 5 equidistante L^* grigio passi + N_0 + W_1 ; PS operator: rgb/cmy0



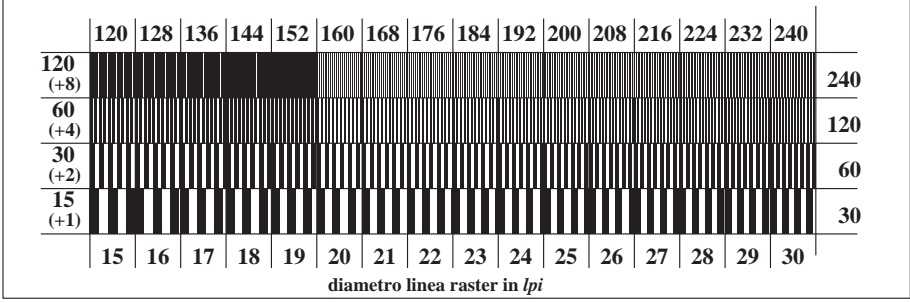
TI730-7, Fig. C3Wde: Elemento C: 16 equidistante L^* grigio passi; PS operator: rgb/cmy0



TI731-1, Fig. C4Wde: Elemento D: anelli di Landolt W-N; PS operator: rgb/cmy0



TI731-3, Fig. C5Wde: Elemento E: Linea raster a 45° (o 135°) gradi; PS operator: rgb/cmy0



TI731-5, Fig. C6Wde: Elemento F: Linea raster a 90° (o 180°) gradi; PS operator: rgb/cmy0