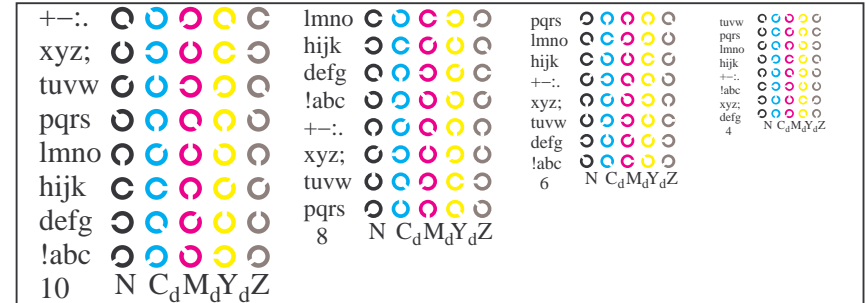
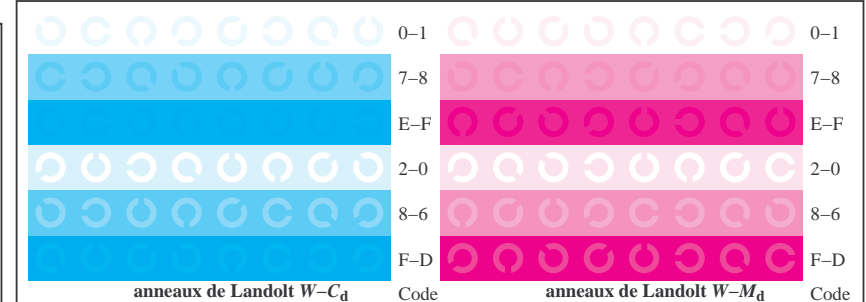


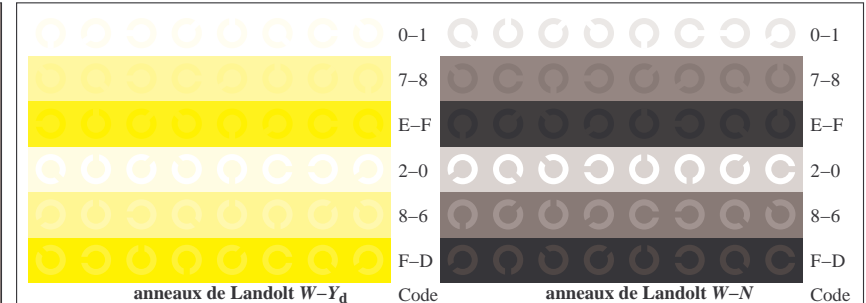
TF971-1, Fig. B4Wd: 16 paliers équidistants $W-C_d$; $W-M_d$; $W-Y_d$; $W-N$; $rgb/cmy0 \rightarrow rgb_d$ setrgbcolor



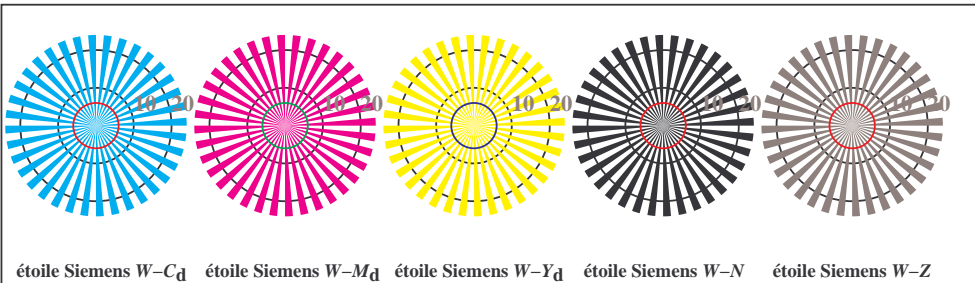
TF971-3, Fig. B5Wd: code et anneau de Landolt N ; C_d ; M_d ; Y_d ; Z ; PS opérateur: $rgb \rightarrow rgb_d$ setrgbcolor



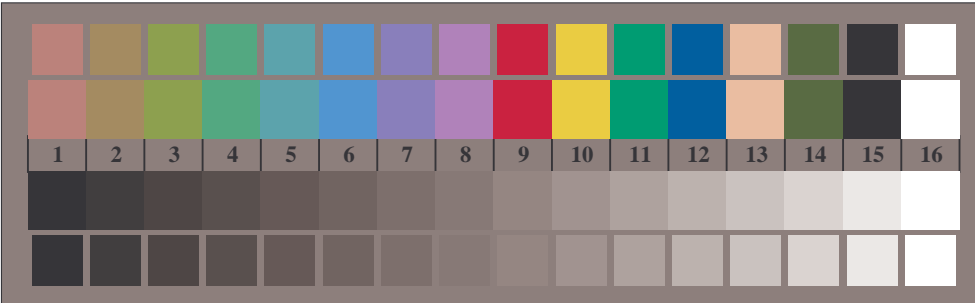
TF971-5, Fig. B6Wd: anneaux de Landolt $W-C_d$; $W-M_d$; PS opérateur: $rgb \rightarrow rgb_d$ setrgbcolor



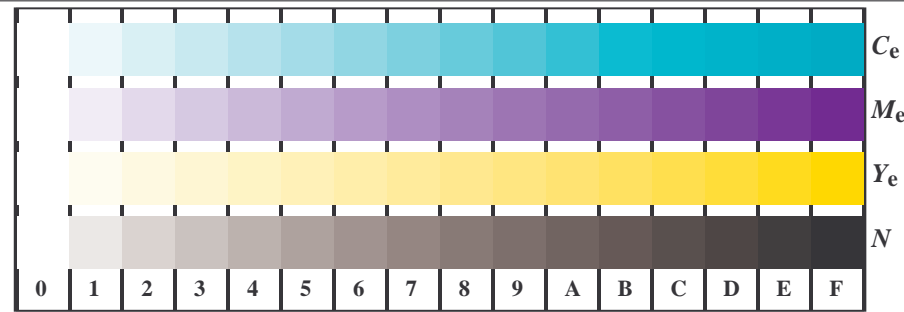
TF971-7, Fig. B7Wd: anneaux de Landolt $W-Y_d$; $W-N$; PS opérateur: $rgb \rightarrow rgb_d$ setrgbcolor



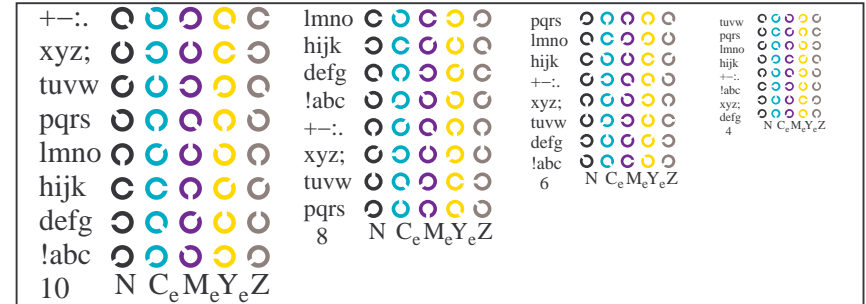
TF970-5, Fig. B2Wd: étoile de Siemens $W-C_d$; $W-M_d$; $W-Y_d$; $W-N$; PS opérateur: $rgb \rightarrow rgb_d$ setrgbcolor



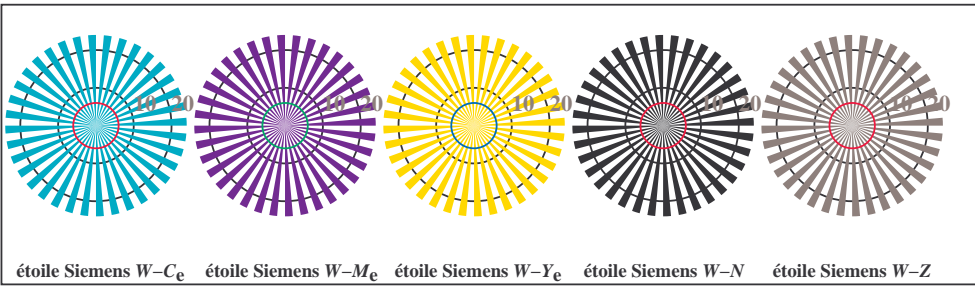
TF970-7, Fig. B3Wd: 14 CIE test couleurs et 2 + 16 paliers de gris (sf); PS opérateur: $rgb/cmy0 \rightarrow rgb_d$ setrgbcolor



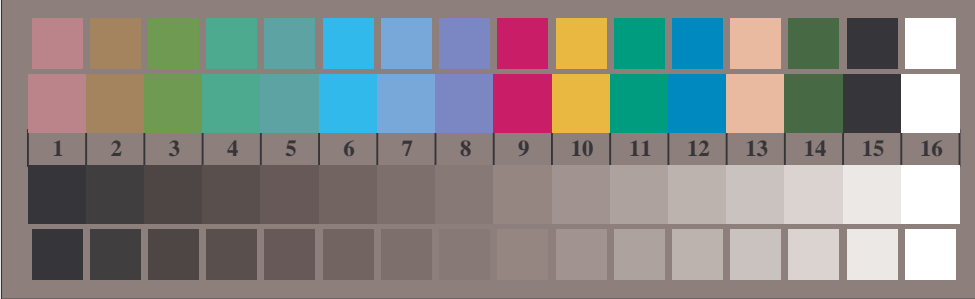
TF971-1, Fig. B4We: 16 paliers équidistants $W-C_e$; $W-M_e$; $W-Y_e$; $W-N$; $rgb/cmy0 \rightarrow rgb_e \text{ setrgbcolor}$



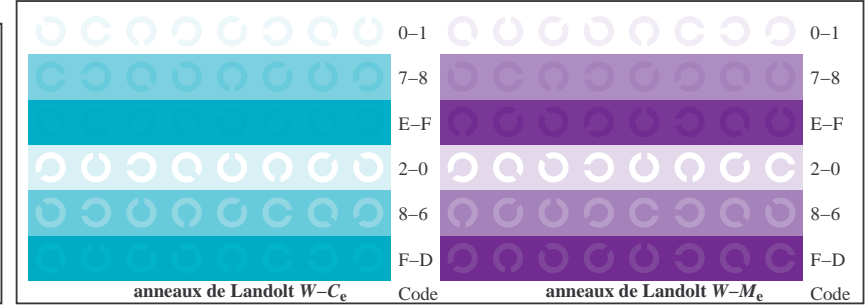
TF971-3, Fig. B5We: code et anneau de Landolt N ; C_e ; M_e ; Y_e ; Z ; PS opérateur: $rgb \rightarrow rgb_e \text{ setrgbcolor}$



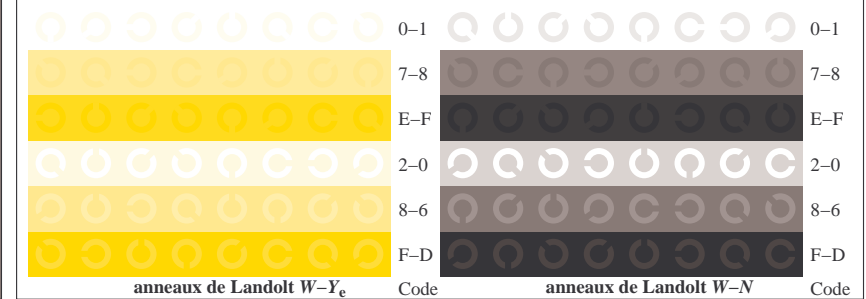
TF970-5, Fig. B2We: étoile de Siemens $W-C_e$; $W-M_e$; $W-Y_e$; $W-N$; PS opérateur: $rgb \rightarrow rgb_e \text{ setrgbcolor}$



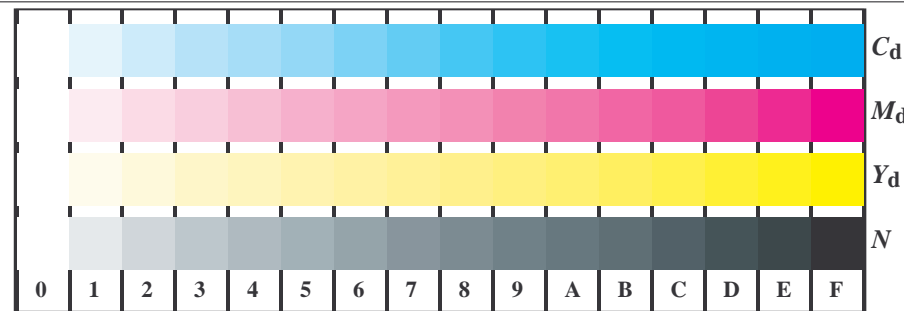
TF970-7, Fig. B3We: 14 CIE test couleurs et 2 + 16 paliers de gris (sf); PS opérateur: $rgb/cmy0 \rightarrow rgb_e \text{ setrgbcolor}$



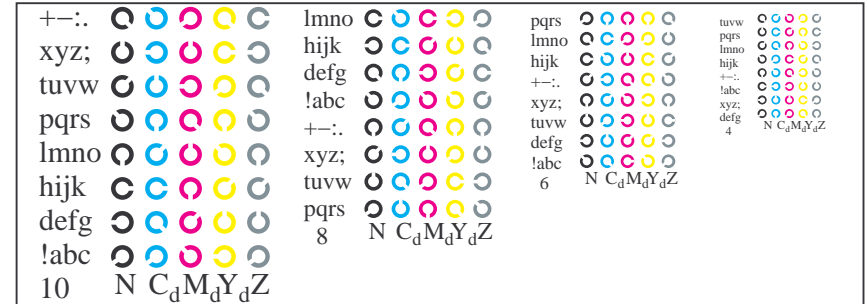
TF971-5, Fig. B6We: anneaux de Landolt $W-C_e$; $W-M_e$; PS opérateur: $rgb \rightarrow rgb_e \text{ setrgbcolor}$



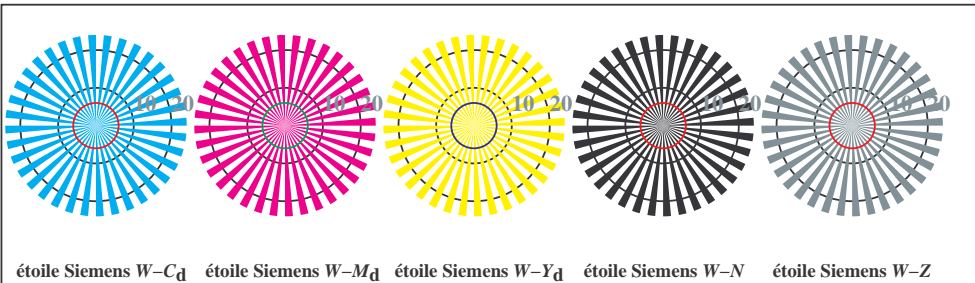
TF971-7, Fig. B7We: anneaux de Landolt $W-Y_e$; $W-N$; PS opérateur: $rgb \rightarrow rgb_e \text{ setrgbcolor}$



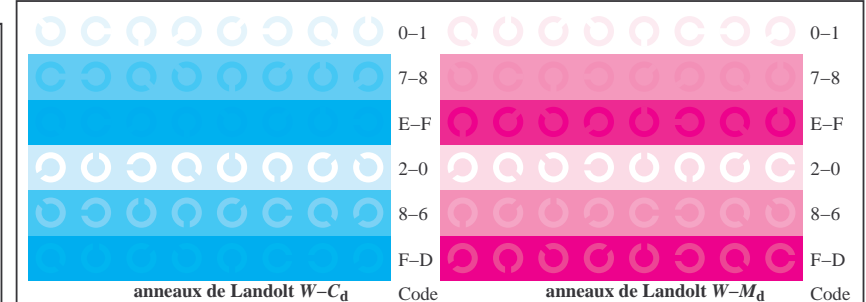
TF971-1, Fig. B4Wdd: 16 paliers équidistants $W-C_d$; $W-M_d$; $W-Y_d$; $W-N$; $rgb/cmy0 \rightarrow rgb_{dd}$ *setrgbcolor*



TF971-3, Fig. B5Wdd: code et anneau de Landolt N ; C_d ; M_d ; Y_d ; Z ; *PS* opérateur: $rgb \rightarrow rgb_{dd}$ *setrgbcolor*



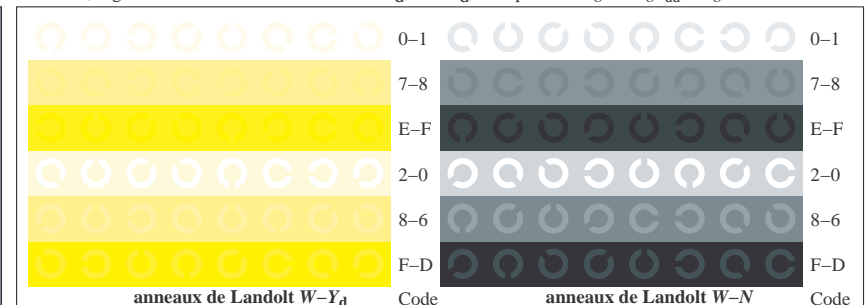
TF970-5, Fig. B2Wdd: étoile de Siemens $W-C_d$; $W-M_d$; $W-Y_d$; $W-N$; *PS* opérateur: $rgb \rightarrow rgb_{dd}$ *setrgbcolor*



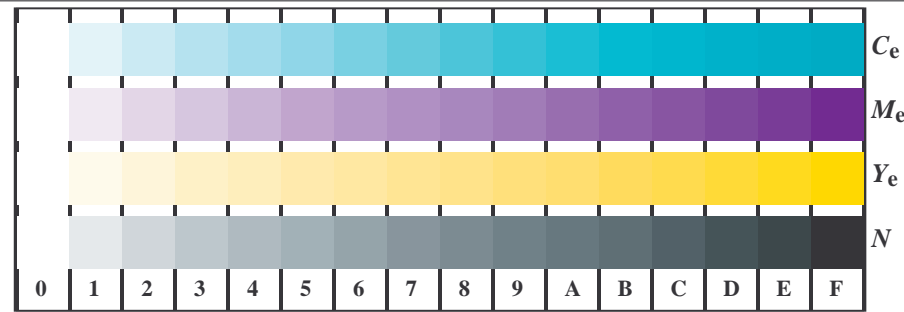
TF971-5, Fig. B6Wdd: anneaux de Landolt $W-C_d$; $W-M_d$; *PS* opérateur: $rgb \rightarrow rgb_{dd}$ *setrgbcolor*



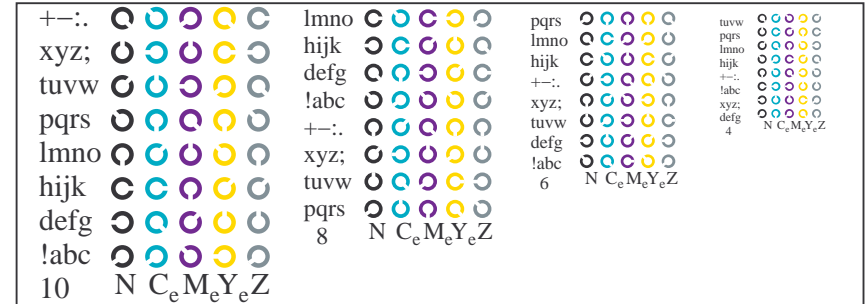
TF970-7, Fig. B3Wdd: 14 CIE test couleurs et 2 + 16 paliers de gris (sf); *PS* opérateur: $rgb/cmy0 \rightarrow rgb_{dd}$ *setrgbcolor*



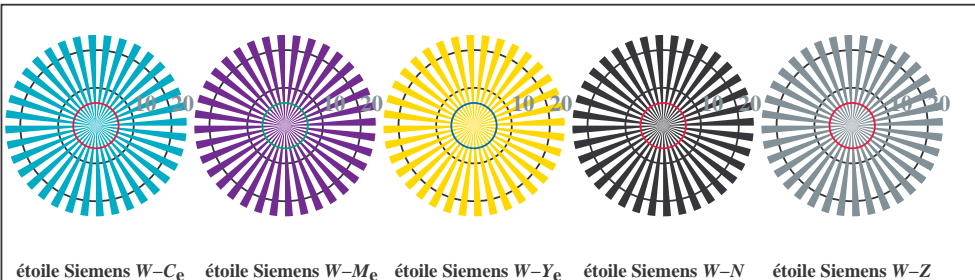
TF971-7, Fig. B7Wdd: anneaux de Landolt $W-Y_d$; $W-N$; *PS* opérateur: $rgb \rightarrow rgb_{dd}$ *setrgbcolor*



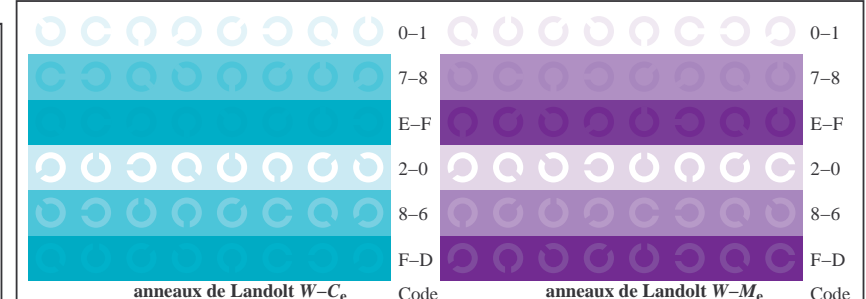
TF971-1, Fig. B4Wde: 16 paliers équidistants $W-C_e$; $W-M_e$; $W-Y_e$; $W-N$; $rgb/cmy0 \rightarrow rgb_{de}$ *setrgbcolor*



TF971-3, Fig. B5Wde: code et anneau de Landolt N ; C_e ; M_e ; Y_e ; Z ; PS opérateur: $rgb \rightarrow rgb_{de}$ *setrgbcolor*



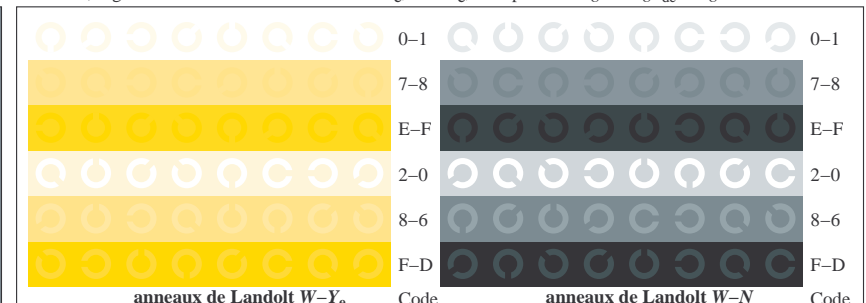
TF970-5, Fig. B2Wde: étoile de Siemens $W-C_e$; $W-M_e$; $W-Y_e$; $W-N$; PS opérateur: $rgb \rightarrow rgb_{de}$ *setrgbcolor*



TF971-3, Fig. B6Wde: anneaux de Landolt $W-C_e$; $W-M_e$; PS opérateur: $rgb \rightarrow rgb_{de}$ *setrgbcolor*



TF970-7, Fig. B3Wde: 14 CIE test couleurs et 2 + 16 paliers de gris (sf); PS opérateur: $rgb/cmy0 \rightarrow rgb_{de}$ *setrgbcolor*



TF971-5, Fig. B7Wde: anneaux de Landolt $W-Y_e$; $W-N$; PS opérateur: $rgb \rightarrow rgb_{de}$ *setrgbcolor*