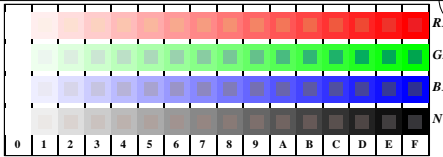


see similar files: http://130.149.60.45/~farbmatrik/TE88/TE88.HTM  
technical information: http://www.ps.bam.de or http://130.149.60.45/~farbmatrik

TUB registration: 20150701-TE88/TE88L0N1.TXT /PS  
application for measurement of offset print output

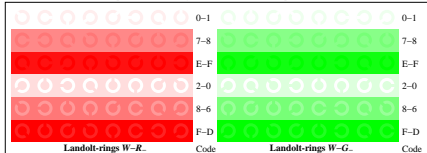
TUB material: code=thata



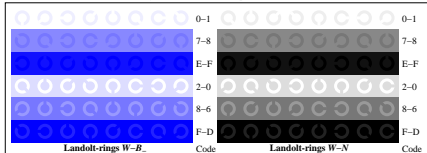
TE881-1, Picture D4W--: 16 equidistant steps W-R., W-G.; W-B.; W-N; rgb/cmy0 set/rgb/cmyk/color



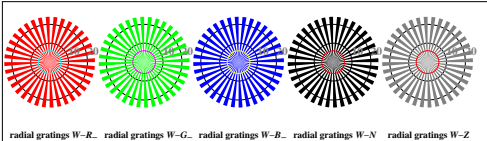
TE881-3, Picture D5W--: Script and Landolt-rings N.R.; G.; B.; Z. PS operator: rgb setrgbcolor



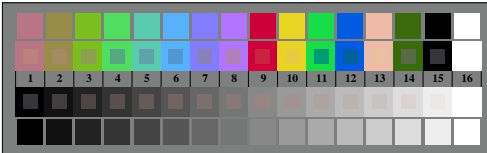
TE881-5, Picture D6W--: Landolt-rings W-R.; W-G.; PS operator:rgb setrgbcolor



TE881-7, Picture D7W--: Landolt-rings W-B.; W-N; PS operator:rgb setrgbcolor



TE880-5, Picture D2W--: radial gratings W-R.; W-G.; W-B.; W-N; PS operator: rgb setrgbcolor



TE880-7, Picture D3W--: 14 CIE-test colours and 2 + 16 grey steps (s); PS operator:rgb/cmy0 set/rgb/cmyk/color

test chart TE88; 4(ISO/IEC 15775 + ISO/IEC TR 24705)  
chromatic test chart RGB

input: rgb/cmyk -> w/rgb/cmyk\_  
output: no change

