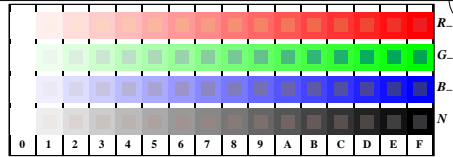


see similar files: http://130.149.60.45/~farbmetrik/TE84/TE84.HTM
technical information: http://www.ps.bam.de or http://130.149.60.45/~farbmetrik

TUB registration: 20150701-TE84/TE84LONI.TXT /PS
application for measurement of offset print output

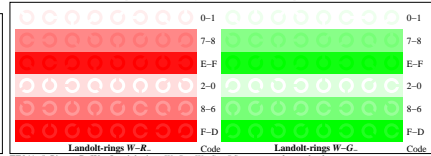
TUB material: code=thata



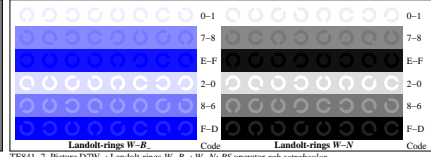
TE841-1, Picture D4W--: 16 equidistant steps W-R.; W-G.; W-B.; W-N; rgb/cmy0 set/rgb/cmykcolor



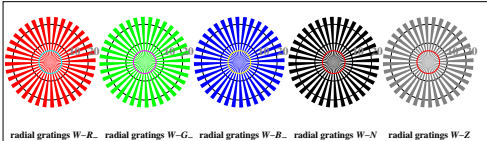
TE841-3, Picture D5W--: Script and Landolt-rings N; R.; G.; B.; Z; PS operator rgb->rgb_setrgbcolor



TE841-5, Picture D6W--: Landolt-rings W-R.; W-G.; PS operator rgb_setrgbcolor

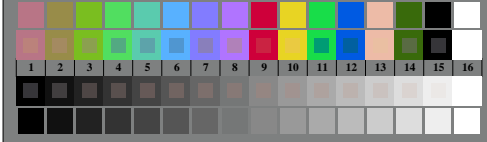


TE841-7, Picture D7W--: Landolt-rings W-B.; W-N; PS operator rgb_setrgbcolor



radial gratings W-R. radial gratings W-G. radial gratings W-B. radial gratings W-N radial gratings W-Z

TE840-5, Picture D2W--: radial gratings W-R.; W-G.; W-B.; W-N; PS operator rgb->rgb_setrgbcolor



TE840-7, Picture D3W--: 14 CIE-test colours and 2 + 16 grey steps (sf); rgb/cmy0 set/rgb/cmykcolor

test chart TE84; 4(ISO/IEC 15775 + ISO/IEC TR 24705)
chromatic test chart RGB

input: rgb/cmyk -> w/rgb/cmyk-
output: no change

