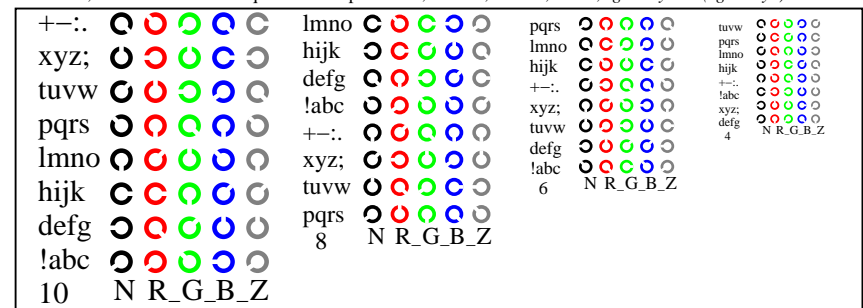
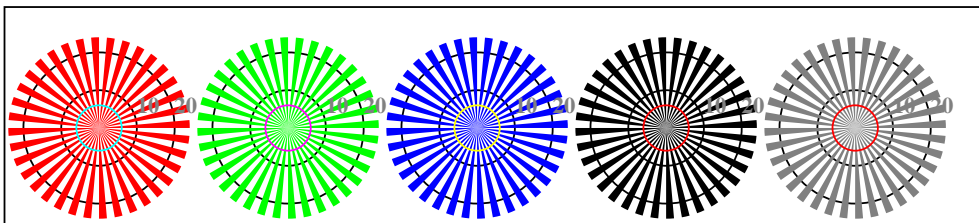


TE841-1, Picture D4W-: 16 equidistant steps $W-R_-$; $W-G_-$; $W-B_-$; $W-N$; $rgb/cmy0$ set($rgb/cmyk$)color

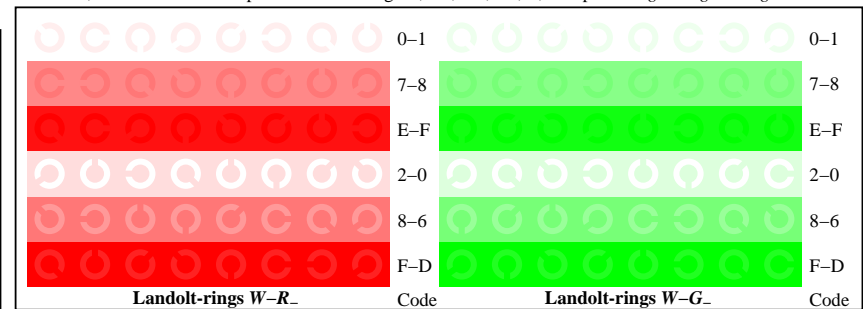


TE841-3, Picture D5W-: Script and Landolt-rings N ; R_- ; G_- ; B_- ; Z ; PS operator $rgb \rightarrow rgb_setrgbcolor$

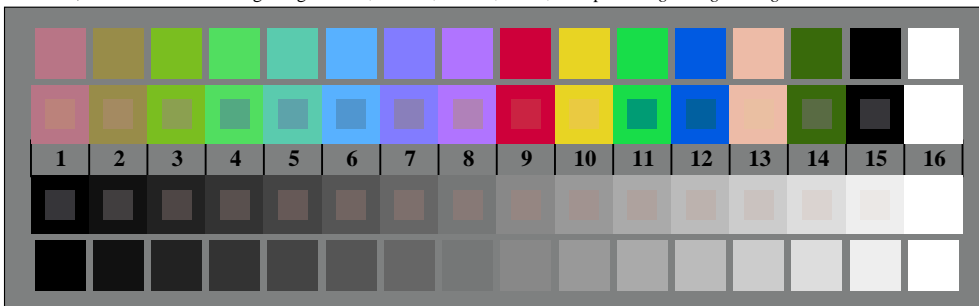


radial gratings $W-R_-$ radial gratings $W-G_-$ radial gratings $W-B_-$ radial gratings $W-N$ radial gratings $W-Z$

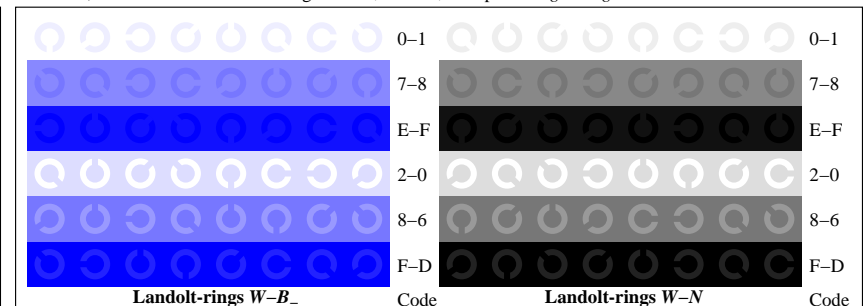
TE840-5, Picture D2W-: radial gratings $W-R_-$; $W-G_-$; $W-B_-$; $W-N$; PS operator $rgb \rightarrow rgb_setrgbcolor$



TE841-5, Picture D6W-: Landolt-rings $W-R_-$; $W-G_-$; PS operator rgb setrgbcolor



TE840-7, Picture D3W-: 14 CIE-test colours and 2 + 16 grey steps (sf); $rgb/cmy0$ set($rgb/cmyk$)color



TE841-7, Picture D7W-: Landolt-rings $W-B_-$; $W-N$; PS operator rgb setrgbcolor