

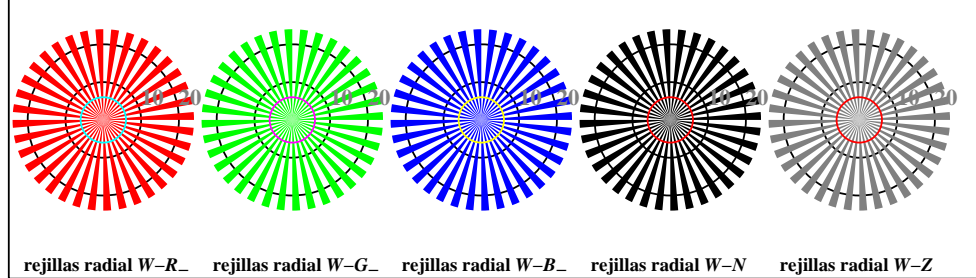
vea archivos semejantes: <http://130.149.60.45/~farbmetrik/RS97/RS97.HTM>
 información técnica: <http://www.ps.bam.de> o <http://130.149.60.45/~farbmetrik>

TUB matrícula: 20130201-RS97/RS97L0NP.PDF /PS
 aplicación para la medida salida en la impresión offset

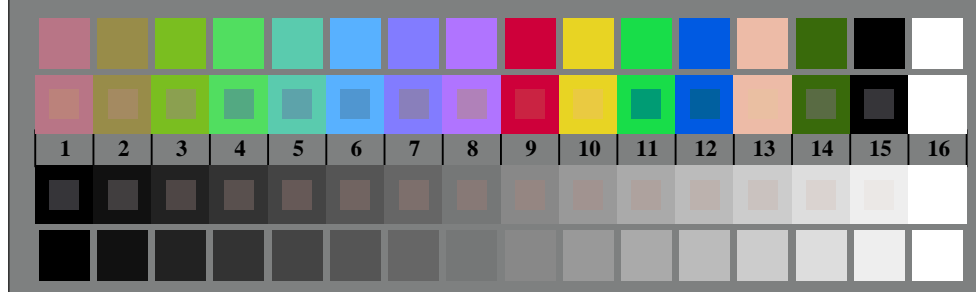
TUB material: code=rh4ta



RS970-3, Fig. D1W-: motivos florales, CIE 14 colores del test y 2 + 16 pasos de gris (sf); ; PS 4 colorimage



RS970-5, Fig. D2W-: rejillas radial W-R-; W-G-; W-B-; W-N; PS operator rgb->rgb_setrgbcolor



RS970-7, Fig. D3W-: CIE 14 colores del test y 2 + 16 pasos de gris (sf); rgb/cmy0 set(rgb/cmyk)color

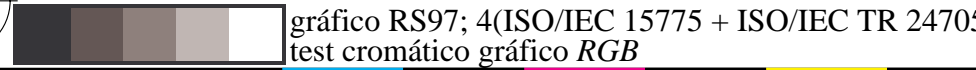
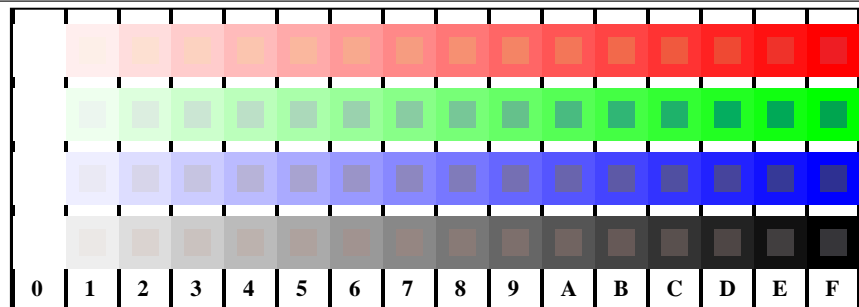
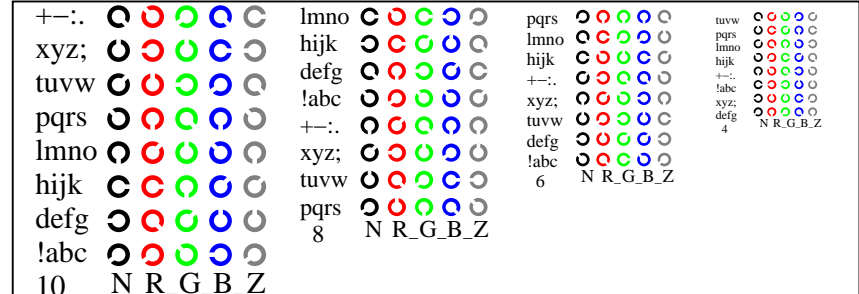


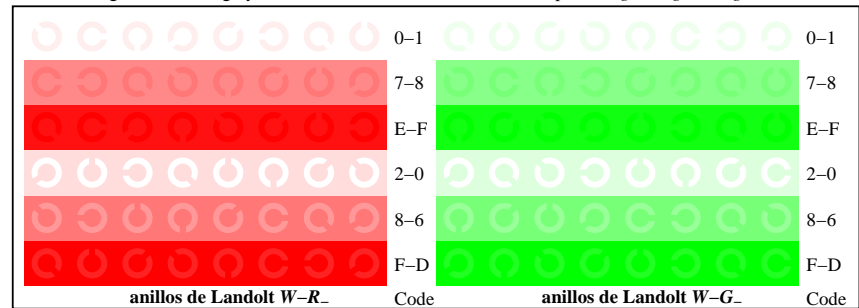
gráfico RS97; 4(ISO/IEC 15775 + ISO/IEC TR 24705)
 test cromático gráfico RGB



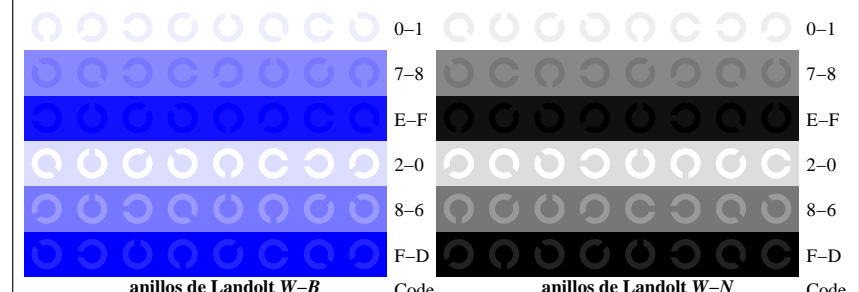
RS971-1, Fig. D4W-: 16 equidistante pasos W-R-; W-G-; W-B-; W-N; rgb/cmy0 set(rgb/cmyk)color



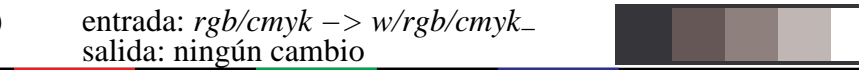
RS971-3, Fig. D5W-: codigo y Landolt anillos N; R-; G-; B-; Z; PS operator rgb->rgb_setrgbcolor



RS971-5, Fig. D6W-: anillos de Landolt W-R-; W-G-; PS operator rgb_setrgbcolor



RS971-7, Fig. D7W-: anillos de Landolt W-B-; W-N; PS operator rgb_setrgbcolor



entrada: rgb/cmyk -> w/rgb/cmyk-
 salida: ningún cambio

