

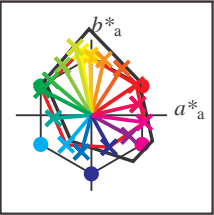


Input and output: Laser Reflective System LRS18a

Data for any device (d)
or elementary (e) colour:
 HIC^*_d

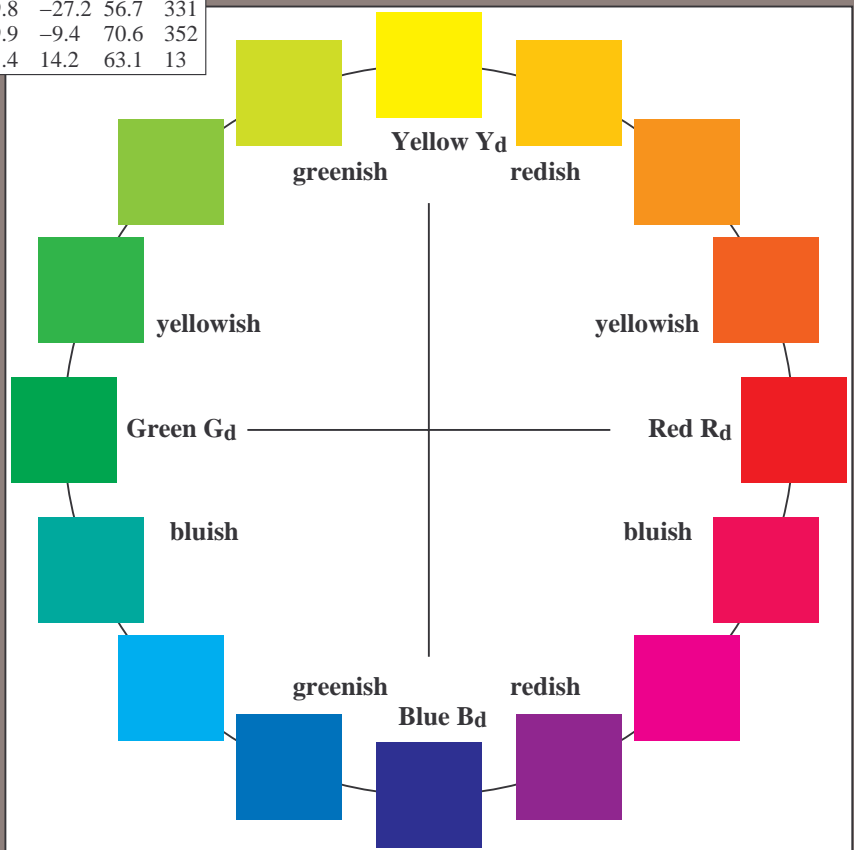
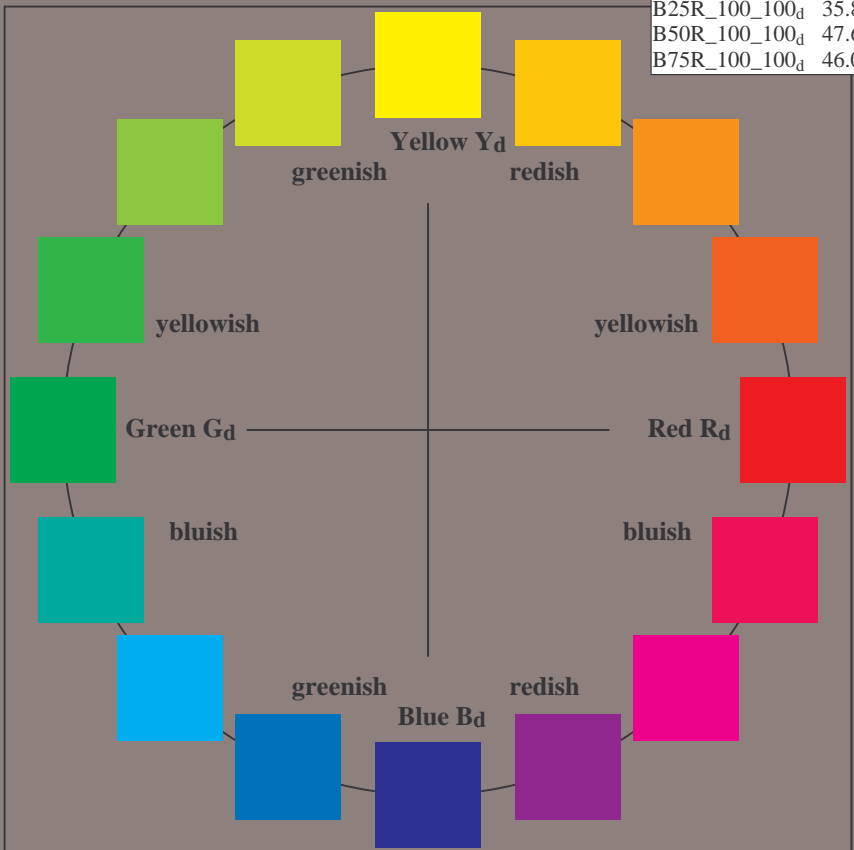
Hue text for the 16 hues
of this page:
 $H^*_d = R00Y_d, R25Y_d, \dots, B75R_d$

| LRS18a | | | | | |
|----------------|-------------------|---------|--------------|--------------|-----|
| H^*_d | $L^*=L^*_a a^*_a$ | b^*_a | $C^*_{ab,a}$ | $h^*_{ab,a}$ | |
| R00Y_100_100_d | 47.0 | 59.1 | 40.1 | 71.5 | 34 |
| R25Y_100_100_d | 59.7 | 40.2 | 61.8 | 73.8 | 56 |
| R50Y_100_100_d | 72.1 | 16.6 | 73.6 | 75.5 | 77 |
| R75Y_100_100_d | 83.1 | -1.7 | 79.1 | 79.1 | 91 |
| Y00G_100_100_d | 91.1 | -14.2 | 84.3 | 85.4 | 99 |
| Y25G_100_100_d | 89.9 | -21.3 | 89.9 | 92.4 | 103 |
| Y50G_100_100_d | 74.3 | -37.9 | 65.9 | 76.1 | 119 |
| Y75G_100_100_d | 61.9 | -53.8 | 46.0 | 70.8 | 139 |
| G00B_100_100_d | 55.1 | -65.2 | 33.4 | 73.3 | 152 |
| G25B_100_100_d | 56.9 | -50.1 | -4.0 | 50.3 | 184 |
| G50B_100_100_d | 53.2 | -33.3 | -39.2 | 51.4 | 229 |
| G75B_100_100_d | 46.2 | -13.2 | -48.4 | 50.2 | 254 |
| B00R_100_100_d | 32.1 | 23.3 | -42.1 | 48.1 | 299 |
| B25R_100_100_d | 35.8 | 49.8 | -27.2 | 56.7 | 331 |
| B50R_100_100_d | 47.6 | 69.9 | -9.4 | 70.6 | 352 |
| B75R_100_100_d | 46.0 | 61.4 | 14.2 | 63.1 | 13 |



| LRS18a | | | | | |
|---------------------|-------------------|---------|--------------|--------------|-----|
| Name | $L^*=L^*_a a^*_a$ | b^*_a | $C^*_{ab,a}$ | $h^*_{ab,a}$ | |
| R _{d, Ma} | 47.0 | 59.1 | 40.1 | 71.5 | 34 |
| Y _{d, Ma} | 91.1 | -14.2 | 84.3 | 85.4 | 99 |
| G _{d, Ma} | 55.1 | -65.2 | 33.4 | 73.3 | 152 |
| C _{d, Ma} | 53.2 | -33.3 | -39.2 | 51.4 | 229 |
| B _{d, Ma} | 32.1 | 23.3 | -42.1 | 48.1 | 299 |
| M _{d, Ma} | 47.6 | 69.9 | -9.4 | 70.6 | 352 |
| N _{d, Ma} | 24.5 | 0.0 | 0.0 | 0.0 | 0 |
| W _{d, Ma} | 96.3 | 0.0 | 0.0 | 0.0 | 0 |
| R _{d, CIE} | 39.9 | 58.7 | 27.9 | 65.0 | 25 |
| Y _{d, CIE} | 81.2 | -2.8 | 71.5 | 71.6 | 92 |
| G _{d, CIE} | 52.2 | -42.4 | 13.6 | 44.5 | 162 |
| B _{d, CIE} | 30.5 | 1.4 | -46.4 | 46.4 | 271 |

%Gamut
 $u^*_{rel} = 114$
%Regularity
 $g^*_{H,rel} = 28$
 $g^*_{C,rel} = 38$



vea archivos semejantes: <http://130.149.60.45/~farbmetrik/RS84/RS84.HTM>
Información técnica: <http://www.ps.bam.de> o <http://130.149.60.45/~farbmetrik>

TUB matrícula: 20130201-RS84/RS84LONP.PDF /.PS
aplicación para la medida salida de impresora láser, separación cmy0 (CMY0)
TUB material: code=rha4ta

RS840-70 2-003131-L0

gráfico TUB-RS84; círculo de tono, 16 pasos, $cf=1$
gráfico según a DIN 33872, 3D=0, de=0, cmy_0

entrada: $rgb/cmyk \rightarrow rgb_d$
salida: transfiera a cmy_0_d

