

vea archivos semejantes: <http://130.149.60.45/~farbmetrik/RS68/RS68.TXT> / .PS
información técnica: <http://www.ps.bam.de> o <http://130.149.60.45/~farbmetrik>

TUB matrícula: 20150701-RS68/RS68L0NA.TXT /.PS TUB material: code=rh4ta
aplicación para la medida de display output, ninguna separación rgb (RGB)

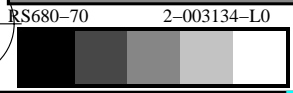
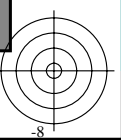
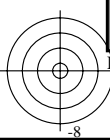
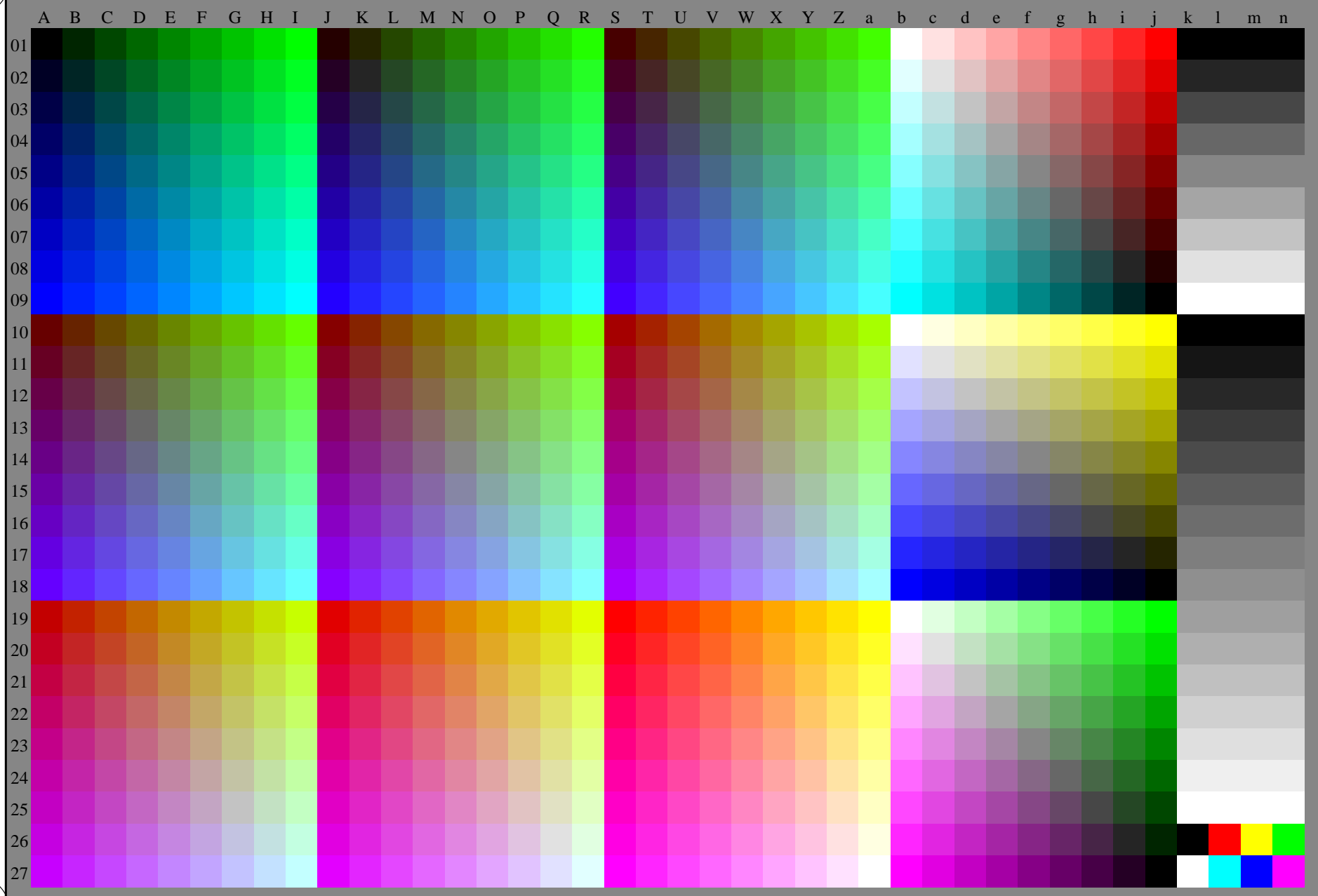
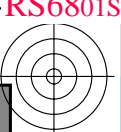
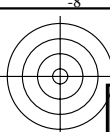


gráfico TUB-RS68; 1080 colores estándar, cf=1
gráfico según a DIN 33872, 3D=0, de=0, rgb

entrada: *rgb/cmyk* -> *rgb_D*
salida: *transfiera a rgb_D*





vea archivos semejantes: <http://130.149.60.45/~farbmetrik/RS68/RS68.TXT> / .PS
información técnica: <http://www.ps.bam.de> o <http://130.149.60.45/~farbmetrik>

TUB matrícula: 20150701-RS68/RS68L0NA.TXT /.PS TUB material: code=rh4ta
aplicación para la medida de display output, ninguna separación rgb (RGB)

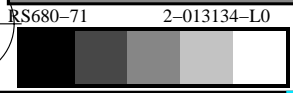
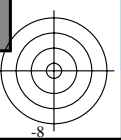
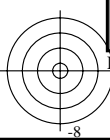
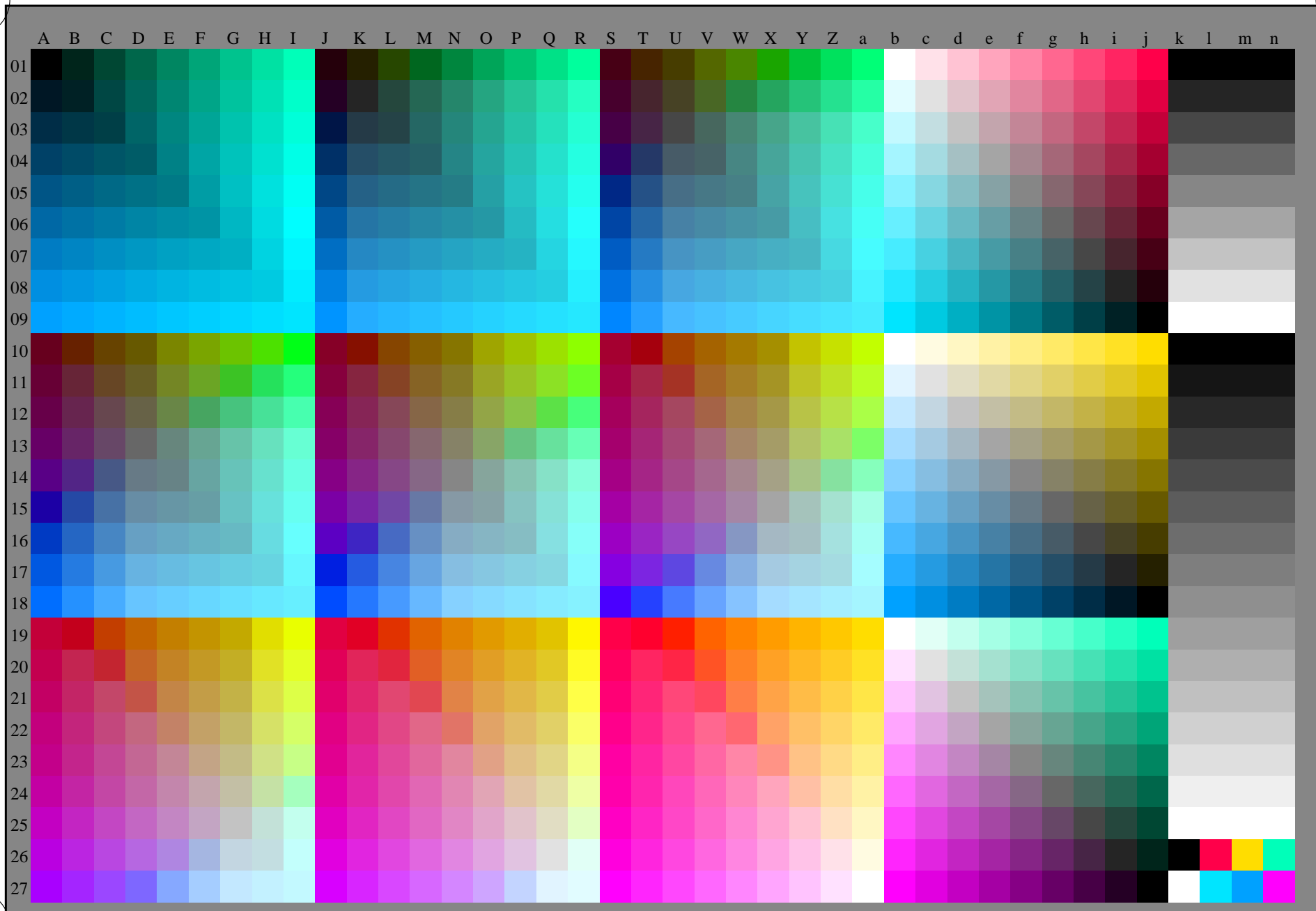


gráfico TUB-RS68; 1080 colores estándar, cf=1
gráfico según a DIN 33872, 3D=0, de=1, rgb

entrada: *rgb/cmyk* -> *rgb_e*
salida: transfiera a *rgb_e*

