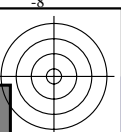
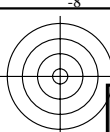


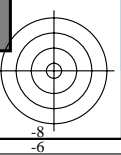
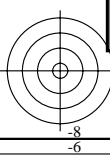
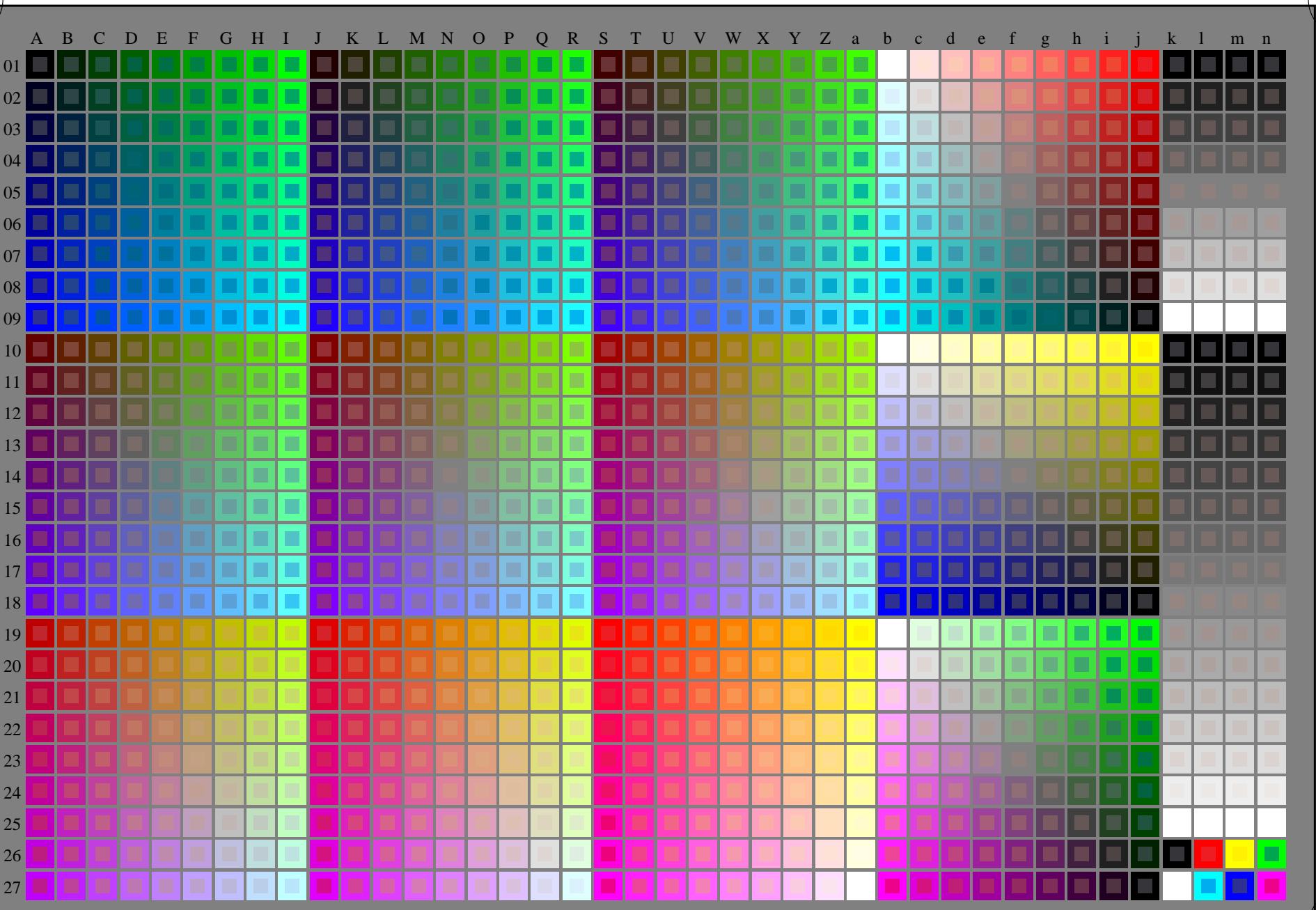
http://130.149.60.45/~farbmetrik/RS55/RS55L0NA.TXT /.PS; comience salida
N: ninguna 3D-linealización (OL) en archivo (F) o PS-startup (S), página 1/33



vea archivos semejantes: <http://130.149.60.45/~farbmetrik/RS55/RS55.HTM>
información técnica: <http://www.ps.bam.de> o <http://130.149.60.45/~farbmetrik>

TUB matrícula: 20130201-RS55/RS55L0NA.TXT /.PS
aplicación para la medida salida en la impresión offset

TUB material: code=rh4ta



2-013030-L0 RS550-7N

rgb + cmy0 (A..j + k26..n27), 000n (k), w (l), nnn0 (m), www (n), 3D=0

gráfico TUB-RS55; 1080 colores estándar
gráfico según a DIN 33872, 3D=0, de=1, cmyk

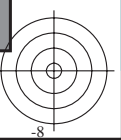
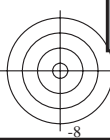
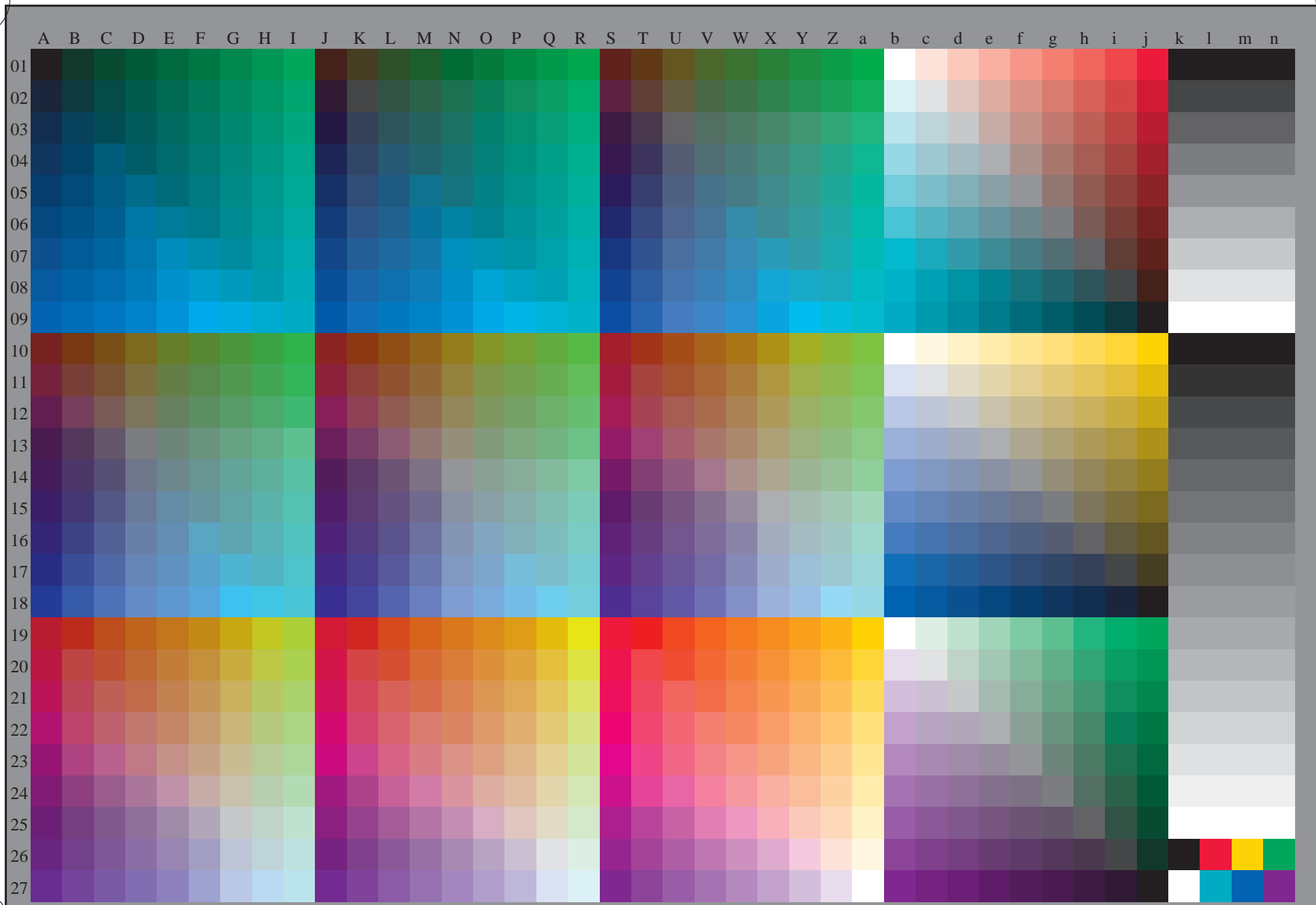
entrada: *rgb/cmyk* -> *rgb/cmyk*
salida: ningún cambio





vea archivos semejantes: <http://130.149.60.45/~farbmetrik/RS55/RS55.HTM>
información técnica: <http://www.ps.bam.de> o <http://130.149.60.45/~farbmetrik>

TUB matrícula: 20130201-RS55/RS55L0NA.TXT /.PS TUB material: code=rh4ta
aplicación para la medida salida en la impresión offset, separación cmykn6 (CMYK)



2-013130-L0 RS550-71

rgb (A_n), 3D=0

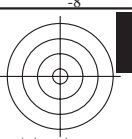
gráfico TUB-RS55; 1080 colores estándar
gráfico según a DIN 33872, 3D=0, de=1, cmyk

entrada: *rgb/cmyk* -> *rgb_e*
salida: transfiera a *cmyk_e*

2-013130-F0

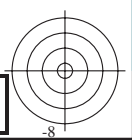
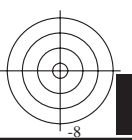
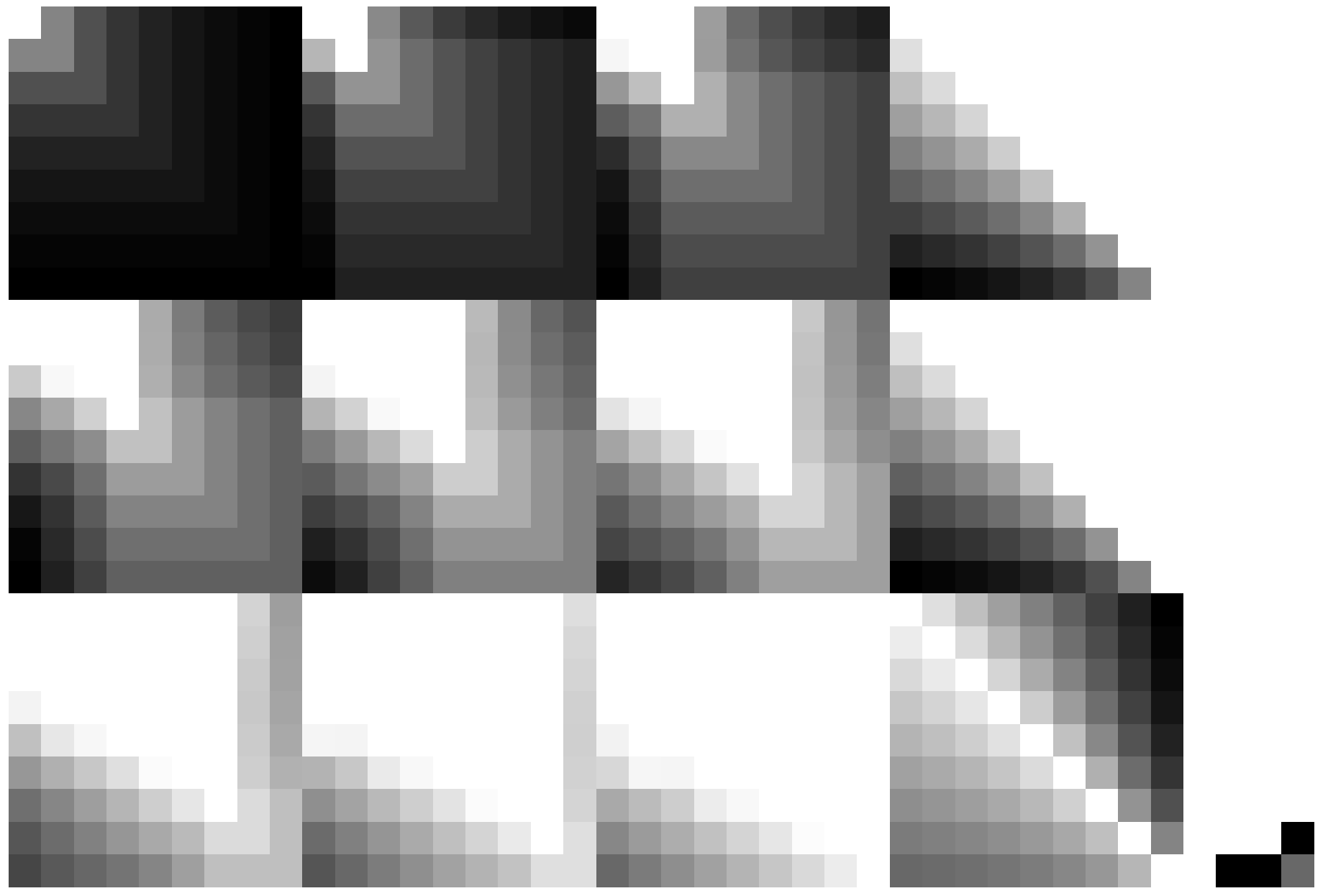
C M Y O L V





vea archivos semejantes: <http://130.149.60.45/~farbmetrik/RS55/RS55.HTM>
información técnica: <http://www.ps.bam.de> o <http://130.149.60.45/~farbmetrik>

TUB matrícula: 20130201-RS55/RS55L0NA.TXT /.PS TUB material: code=rh4ta
aplicación para la medida salida en la impresión offset, separación cmyk6 (CMYK)

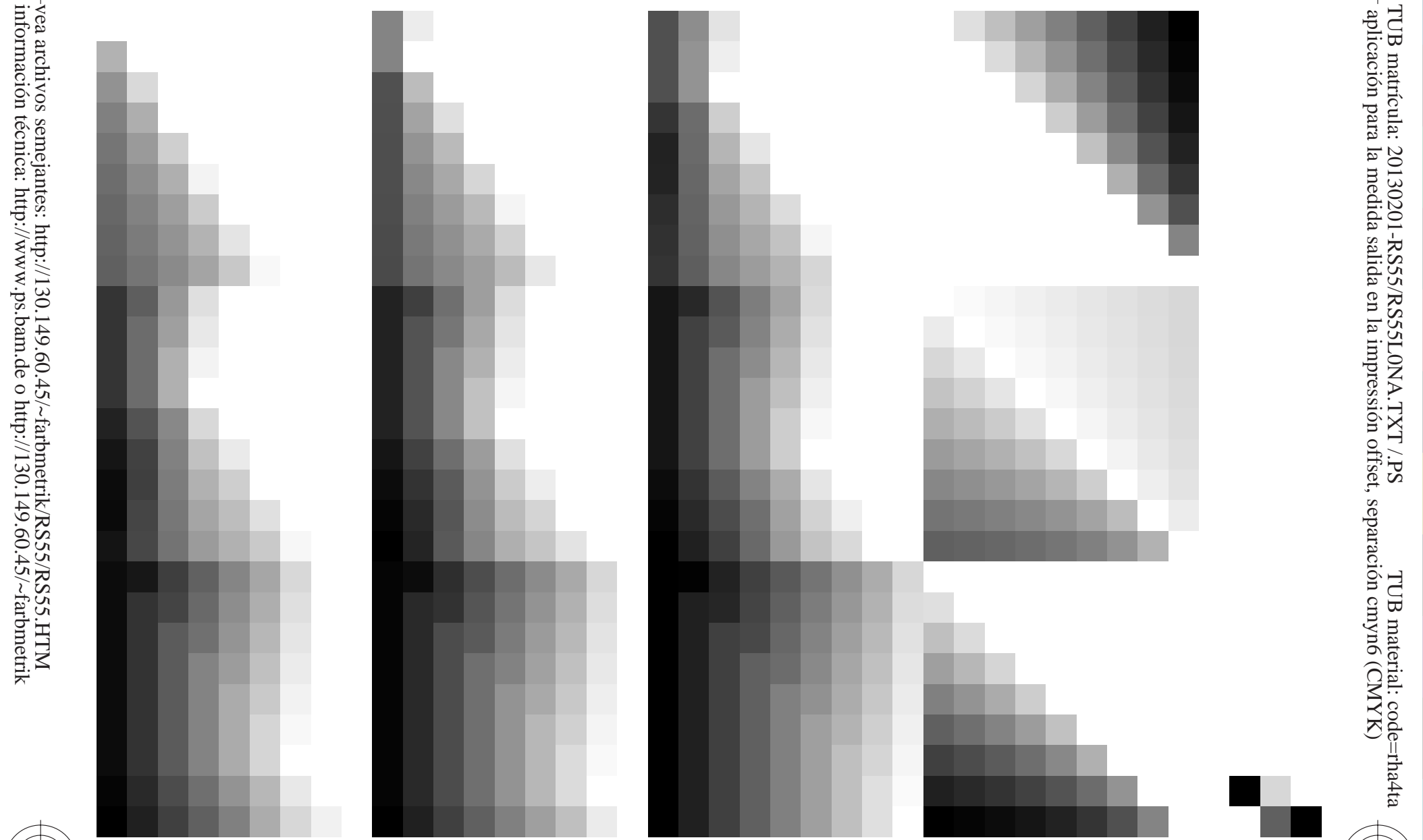


2-013230-L0 RS550-71

gráfico TUB-RS55; 1080 colores estándar
gráfico según a DIN 33872, 3D=0, de=1, cmyk

entrada: $rgb/cmyk \rightarrow rgb_e$
salida: transfiera a $cmyk_e$

2-013230-F0



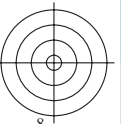
vea archivos semejantes: <http://130.149.60.45/~farbmetrik/RS55/RS55.HTM>
información técnica: <http://www.ps.bam.de> o <http://130.149.60.45/~farbmetrik>

TUB matrícula: 20130201-RS55/RS55L0NA.TXT /.PS TUB material: code=rh4ta
aplicación para la medida salida en la impresión offset, separación cmyk6 (CMYK)

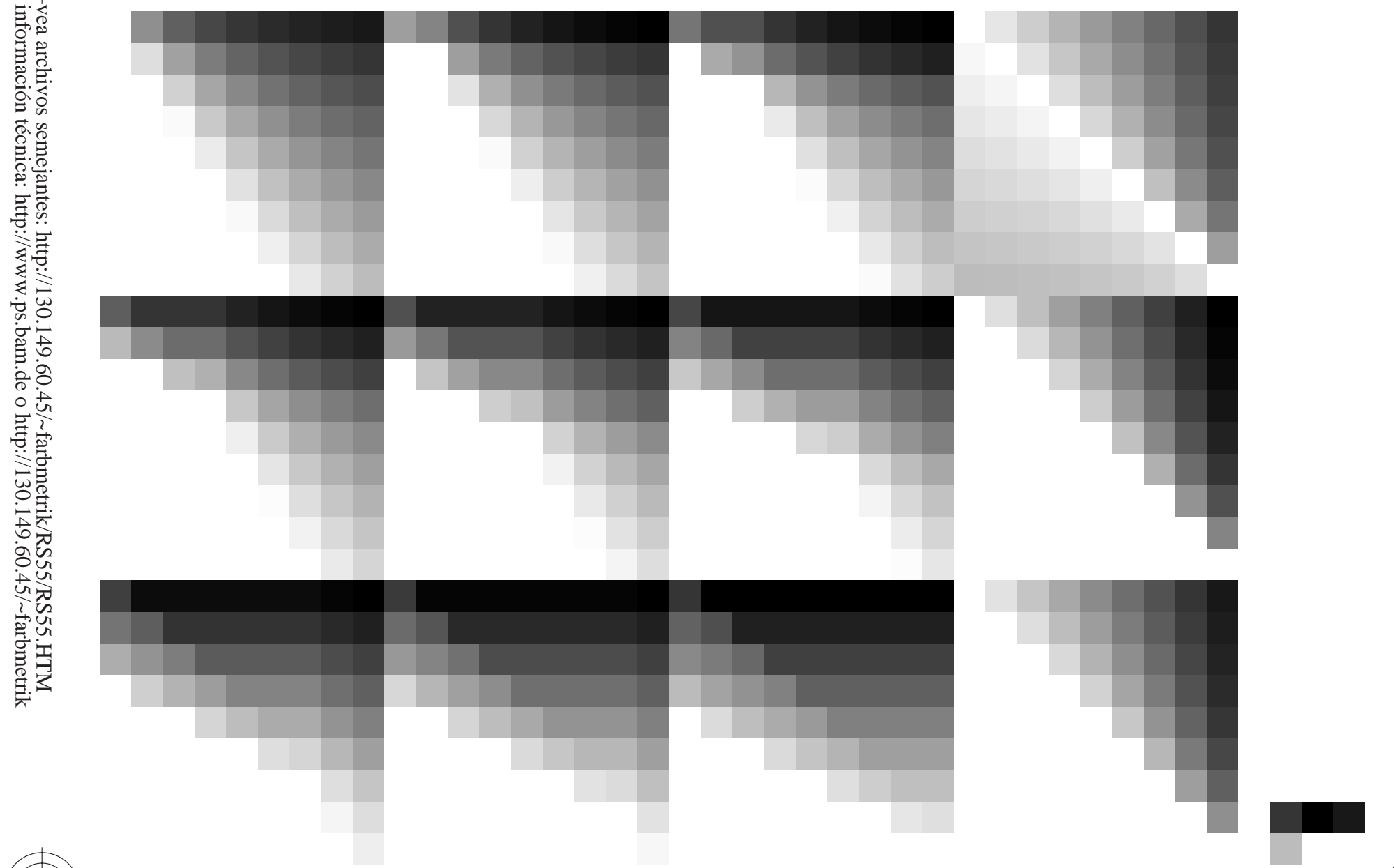
2-013330-L0 RS550-71

gráfico TUB-RS55; 1080 colores estándar
gráfico según a DIN 33872, 3D=0, de=1, cmyk

entrada: *rgb/cmyk* -> *rgbe*
salida: transfiera a *cmyk_e*



TUB matrícula: 20130201-RS55/RS55L0NA.TXT /.PS TUB material: code=rh4ta
aplicación para la medida salida en la impresión offset, separación cmyk6 (CMYK)



vea archivos semejantes: <http://130.149.60.45/~farbmetrik/RS55/RS55.HTM>
información técnica: <http://www.ps.bam.de> o <http://130.149.60.45/~farbmetrik>

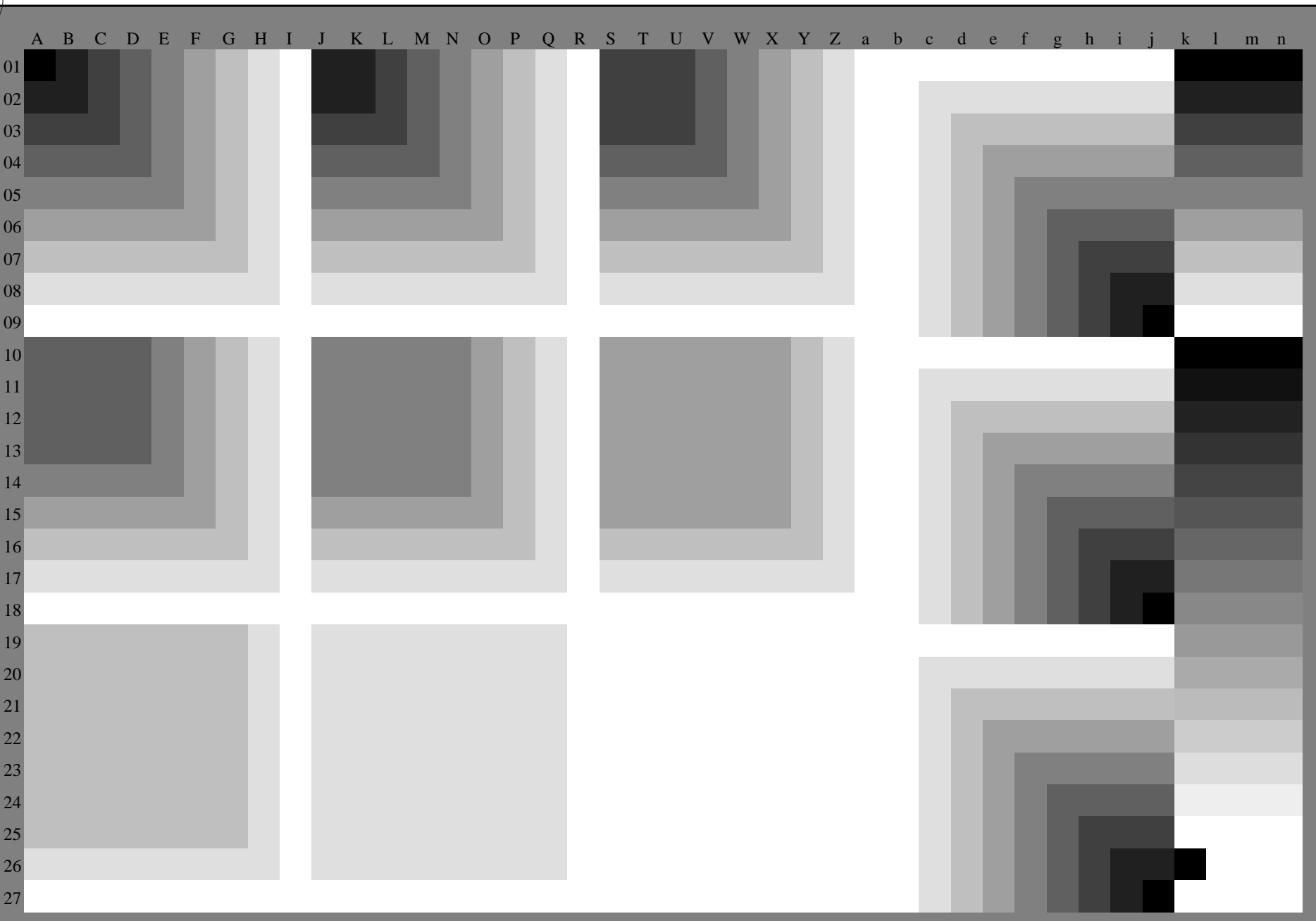
2-013430-L0 RS550-71

gráfico TUB-RS55; 1080 colores estándar
gráfico según a DIN 33872, 3D=0, de=1, cmyk

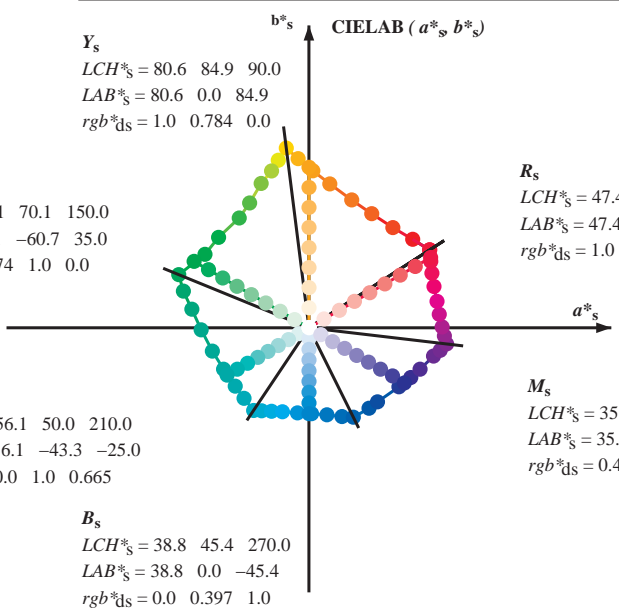
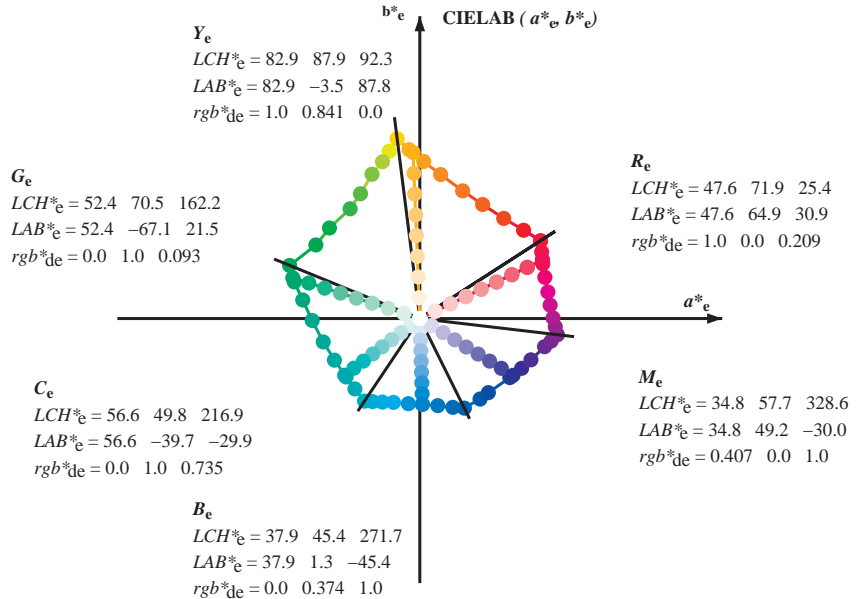
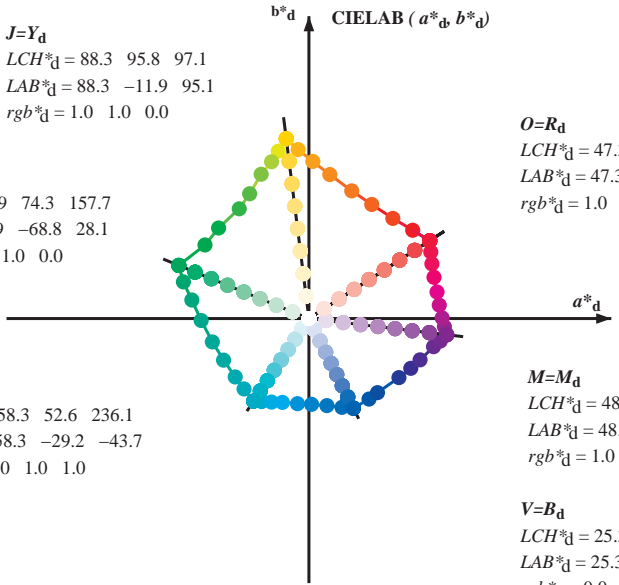
entrada: *rgb/cmyk* -> *rgbe*
salida: transfiera a *cmyke*

vea archivos semejantes: <http://130.149.60.45/~farbmetrik/RS55/RS55.HTM>
información técnica: <http://www.ps.bam.de> o <http://130.149.60.45/~farbmetrik>

TUB matrícula: 20130201-RS55/RS55L0NA.TXT /.PS
aplicación para la medida salida en la impresión offset, separación cmykn6 (CMYK)
TUB material: code=rh4ta



Data of Maximum color M in colorimetric system Offset standard print; separation cmyn6*, D65 for input or output; Six hue angles of the 60 degree standard colours RYGBM_s: h_{ab,ds} = 30.0, 90.0, 150.0, 210.0, 270.0, 330.0; Six hue angles of the device colours RYGBM_d: h_{ab,d} = 32.8, 97.2, 157.8, 236.2, 296.4, 353.3; Six hue angles of the elementary colours RYGBM_e: h_{ab,e} = 25.5, 92.3, 162.2, 217.0, 271.7, 328.6



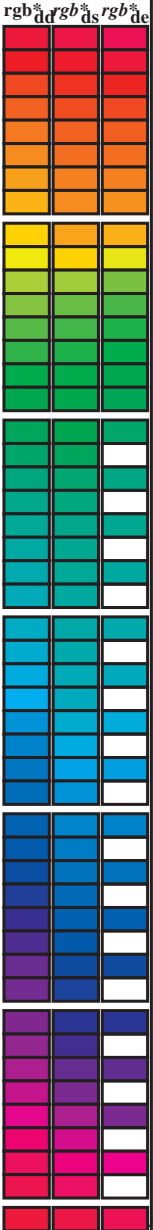
$(a^*_d, b^*_d), (a^*_s, b^*_s), (a^*_e, b^*_e)$
 $rgb^*_e LCH^*_e LAB^*_e$
 $h_{ab,s} = atan [r^*_d cos(30) + g^*_d cos(150)] / [r^*_d sin(30) + g^*_d sin(150) + b^*_d sin(270)]$ (1)
 $h_{ab,s}$
 $s: h_{ab,s} = 30.0, 90.0, 150.0, 210.0, 270.0, 330.0, 390.0 (i=0,6)$
 $h_{48ab,sij} = h_{ab,si} + j [h_{ab,si+1} - h_{ab,si}] / 8 (i = 0, 1, \dots, 5; j = 0, 1, \dots, 7)$ (2)
 $h_{360ab,sij} = h_{ab,si} + j [h_{ab,si+1} - h_{ab,si}] / 60 (i = 0, 1, \dots, 5; j = 0, 1, \dots, 59)$ (3)
 $h_{ab,e}$
 $e: h_{ab,e} = 25.5, 92.3, 162.2, 217.0, 271.7, 328.6, 385.5 (i=0,6)$
 $h_{48ab,eij} = h_{ab,ei} + j [h_{ab,ei+1} - h_{ab,ei}] / 8 (i = 0, 1, \dots, 5; j = 0, 1, \dots, 7)$ (4)
 $h_{360ab,eij} = h_{ab,ei} + j [h_{ab,ei+1} - h_{ab,ei}] / 60 (i = 0, 1, \dots, 5; j = 0, 1, \dots, 59)$ (5)
 $h_{ab}, h_{ab,d}$
 rgb^*_d

vea archivos semejantes: http://130.149.60.45/~farbmetrik/RS55/RS55.HTM
información técnica: http://www.ps.bam.de o http://130.149.60.45/~farbmetrik

TUB matrícula: 20130201-RS55/RS55LONA.TXT /.PS
aplicación para la medida salida en la impresión offset, separación cmyn6 (CMYK)
TUB material: code=rh4ta

Data of maximum color M in colorimetric system Offset standard print; separation cmy6*; D65 for input or output; Six hue angles of the 60 degree standard colours RYGBCM_s; h_{ab,ds} = 30.0, 90.0, 150.0, 210.0, 270.0, 330.0; Six hue angles of the device colours RYGBCM_d; h_{ab,d} = 32.8, 97.2, 157.8, 236.2, 296.4, 353.3; Six hue angles of the elementary colours RYGBCM_e; h_{ab,e} = 25.5, 92.3, 162.2, 217.0, 271.7, 328.6

Table with 12 columns: h_ab,d, h_ab,s, h_ab,e, r_gb*dd64M, LAB*ddx64M (x=LabCh), r_gb*ddx361M, LAB*ddx361M (x=LabCh), r_gb*dsx361M, LAB*dsx361M (x=LabCh), r_gb*dex361M, LAB*dex361M (x=LabCh), r_gb*dd, r_gb*ds, r_gb*de. Rows contain numerical data for 1080 color standards.

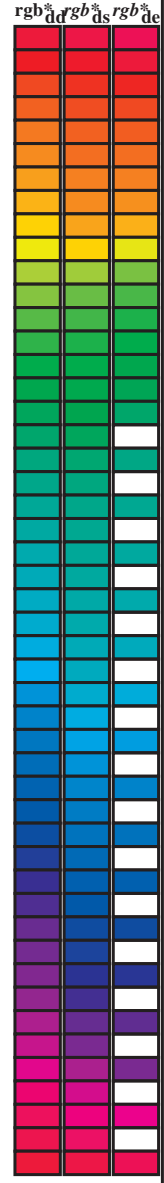


vea archivos semejantes: http://130.149.60.45/~farbmetrik/RS55/RS55.HTM
información técnica: http://www.ps.bam.de o http://130.149.60.45/~farbmetrik

TUB matrícula: 20130201-RS55/RS55LONA.TXT /PS
aplicación para la medida salida en la impresión offset, separación cmy6 (CMYK)
TUB material: code=rh4tra

Data of Maximum color M in colorimetric system Offset standard print; separation cmy6*, D65 for input or output; Six hue angles of the 60 degree standard colours RYGBM_d: h_{ab,ds} = 30.0, 90.0, 150.0, 210.0, 270.0, 330.0; Six hue angles of the device colours RYGBM_d: h_{ab,d} = 32.8, 97.2, 157.8, 236.2, 296.4, 353.3; Six hue angles of the elementary colours RYGBM_e: h_{ab,e} = 25.5, 92.3, 162.2, 217.0, 271.7, 328.6

h _{ab,d}	h _{ab,s}	h _{ab,e}	rgb* dd64M	LAB* ddx64M (x=LabCh)	rgb* dex361M	LAB* dex361M
32.8	30.0	25.4	1.0 0.0 0.0	47.3 63.8 41.2 76.0 32.8	1.0 0.0 0.209	47.6 64.9 30.9 71.9 25
40.4	37.5	33.8	1.0 0.125 0.0	51.2 54.9 46.7 72.1 40.4	1.0 0.007 0.0	47.6 63.4 41.6 75.8 33
50.0	45.0	42.1	1.0 0.25 0.0	56.0 44.4 53.0 69.1 50.0	1.0 0.148 0.0	52.1 53.0 48.1 71.6 42
61.1	52.5	50.5	1.0 0.375 0.0	61.4 33.2 60.3 68.8 61.1	1.0 0.25 0.0	56.0 44.5 53.0 69.2 49
71.4	60.0	58.8	1.0 0.5 0.0	67.2 22.6 67.6 71.2 71.4	1.0 0.35 0.0	60.3 35.6 59.0 69.0 58
81.7	67.5	67.2	1.0 0.625 0.0	73.6 11.0 76.1 76.9 81.7	1.0 0.442 0.0	64.5 27.8 64.5 70.2 66
88.5	75.0	75.6	1.0 0.75 0.0	79.2 2.0 83.0 83.1 88.5	1.0 0.55 0.0	69.8 18.3 71.3 73.6 75
93.6	82.5	83.9	1.0 0.875 0.0	84.2 -5.7 89.4 89.6 93.6	1.0 0.655 0.0	75.0 9.0 77.9 78.5 83
97.1	90.0	92.3	1.0 1.0 0.0	88.3 -11.9 95.1 95.8 97.1	1.0 0.842 0.0	83.0 -3.4 87.8 87.9 92
100.3	97.5	101.0	0.875 1.0 0.0	85.8 -16.2 88.6 90.0 100.3	0.871 1.0 0.0	85.8 -16.2 88.4 89.9 100
103.3	105.0	109.7	0.75 1.0 0.0	82.9 -19.7 83.0 85.3 103.3	0.599 1.0 0.0	76.2 -26.6 74.3 78.9 109
108.3	112.5	118.5	0.625 1.0 0.0	77.0 -25.2 76.3 80.4 108.3	0.455 1.0 0.0	71.4 -33.4 63.2 71.6 117
115.3	120.0	127.2	0.5 1.0 0.0	72.7 -31.3 66.0 73.1 115.3	0.327 1.0 0.0	65.8 -41.3 54.4 68.4 127
122.4	127.5	136.0	0.375 1.0 0.0	68.9 -36.9 58.1 68.8 122.4	0.244 1.0 0.0	60.7 -48.1 47.5 67.6 135
134.9	135.0	144.7	0.25 1.0 0.0	60.8 -47.8 47.8 67.6 134.9	0.124 1.0 0.0	57.4 -54.9 38.9 67.4 144
144.6	142.5	153.4	0.125 1.0 0.0	57.4 -54.9 38.9 67.3 144.6	0.047 1.0 0.0	54.0 -63.8 32.7 71.7 152
157.7	150.0	162.2	0.0 1.0 0.0	51.9 -68.8 28.1 74.3 157.7	0.0 1.0 0.093	52.4 -67.0 21.5 70.5 162
163.7	157.5	169.0	0.0 1.0 0.125	52.5 -66.4 19.3 69.1 163.7	0.0 1.0 0.209	53.1 -63.5 12.8 64.9 168
170.9	165.0	175.9	0.0 1.0 0.25	53.2 -61.9 9.8 62.7 170.9	0.0 1.0 0.311	53.7 -59.7 4.3 59.9 175
181.0	172.5	182.7	0.0 1.0 0.375	54.1 -56.9 -1.0 56.9 181.0	0.0 1.0 0.387	54.2 -56.4 -2.2 56.5 182
193.5	180.0	189.6	0.0 1.0 0.5	54.8 -51.0 -12.3 52.5 193.5	0.0 1.0 0.46	54.6 -53.1 -8.9 54.0 189
205.9	187.5	196.4	0.0 1.0 0.625	55.8 -45.1 -21.9 50.1 205.9	0.0 1.0 0.524	55.0 -50.0 -14.3 52.1 195
218.4	195.0	203.2	0.0 1.0 0.75	56.7 -38.9 -30.9 49.7 218.4	0.0 1.0 0.598	55.6 -46.5 -19.9 50.7 203
227.3	202.5	210.1	0.0 1.0 0.875	57.5 -34.3 -37.2 50.6 227.3	0.0 1.0 0.662	56.1 -43.4 -24.7 50.1 209
236.1	210.0	216.9	0.0 1.0 1.0	58.3 -29.2 -43.7 52.6 236.1	0.0 1.0 0.736	56.7 -39.7 -29.9 49.8 216
240.3	217.5	223.8	0.0 0.875 1.0	55.2 -25.0 -43.9 50.5 240.3	0.0 1.0 0.819	57.2 -36.4 -34.4 50.3 223
245.8	225.0	230.6	0.0 0.75 1.0	51.7 -19.7 -44.1 48.3 245.8	0.0 1.0 0.922	57.9 -32.5 -39.7 51.4 230
252.5	232.5	237.5	0.0 0.625 1.0	47.7 -13.9 -44.4 46.5 252.5	0.0 0.974 1.0	57.7 -28.3 -43.7 52.2 237
262.3	240.0	244.3	0.0 0.5 1.0	42.7 -6.0 -45.0 45.4 262.3	0.0 0.785 1.0	52.7 -21.1 -44.1 49.0 244
271.7	247.5	251.2	0.0 0.375 1.0	37.9 1.3 -45.4 45.4 271.7	0.0 0.659 1.0	48.9 -15.4 -44.3 47.1 250
281.6	255.0	258.0	0.0 0.25 1.0	33.3 9.4 -46.0 47.0 281.6	0.0 0.555 1.0	45.0 -9.4 -44.8 45.9 258
290.3	262.5	264.8	0.0 0.125 1.0	28.6 17.4 -46.9 50.1 290.3	0.0 0.472 1.0	41.7 -4.3 -45.1 45.4 264
296.4	270.0	271.7	0.0 0.0 1.0	25.3 23.5 -47.3 52.8 296.4	0.0 0.375 1.0	37.9 1.4 -45.3 45.5 271
306.7	277.5	278.8	0.125 0.0 1.0	29.3 31.8 -42.6 53.1 306.7	0.0 0.291 1.0	34.9 6.8 -45.9 46.5 278
312.7	285.0	285.9	0.25 0.0 1.0	31.5 36.2 -39.2 53.4 312.7	0.0 0.188 1.0	31.0 13.3 -46.6 48.5 285
326.7	292.5	293.0	0.375 0.0 1.0	33.8 47.6 -31.2 56.9 326.7	0.0 0.079 1.0	27.4 19.6 -47.1 51.1 292
333.9	300.0	300.1	0.5 0.0 1.0	37.8 53.8 -26.3 59.9 333.9	0.046 0.0 1.0	26.8 26.6 -45.7 53.0 300
339.6	307.5	307.2	0.625 0.0 1.0	40.9 58.8 -21.8 62.7 339.6	0.0 0.126 1.0	29.4 31.9 -42.5 53.2 306
347.2	315.0	314.3	0.75 0.0 1.0	43.1 65.9 -14.9 67.6 347.2	0.265 0.0 1.0	31.8 37.7 -38.4 53.8 314
350.2	322.5	321.4	0.875 0.0 1.0	45.9 69.4 -11.9 70.5 350.2	0.324 0.0 1.0	32.9 43.2 -34.8 55.5 321
353.3	330.0	328.6	1.0 0.0 1.0	48.2 72.8 -8.5 73.3 353.3	0.407 0.0 1.0	34.9 49.3 -30.0 57.7 328
356.5	337.5	335.7	1.0 0.0 0.875	48.2 71.6 -4.3 71.7 356.5	0.529 0.0 1.0	38.6 55.0 -25.3 60.6 335
360.3	345.0	342.8	1.0 0.0 0.75	48.1 70.4 0.3 70.4 360.3	0.678 0.0 1.0	41.9 61.9 -19.0 64.8 342
365.8	352.5	349.9	1.0 0.0 0.625	48.0 68.9 7.1 69.3 365.8	0.842 0.0 1.0	45.2 68.6 -12.7 69.8 349
371.6	360.0	357.0	1.0 0.0 0.5	47.7 67.7 14.0 69.1 371.6	0.949 0.0 1.0	47.3 71.5 -9.9 72.2 352
378.2	367.5	364.1	1.0 0.0 0.375	47.7 66.1 21.8 69.6 378.2	1.0 0.0 0.765	48.2 70.6 -0.1 70.6 359
383.9	375.0	371.2	1.0 0.0 0.25	47.7 65.0 28.9 71.2 383.9	1.0 0.0 0.563	47.9 68.4 10.6 69.2 368
388.6	382.5	378.3	1.0 0.0 0.125	47.4 64.4 35.1 73.4 388.6	1.0 0.0 0.408	47.8 66.7 19.8 69.6 376
392.8	390.0	385.4	1.0 0.0 0.0	47.3 63.8 41.2 76.0 392.8	1.0 0.0 0.209	47.6 64.9 30.9 71.9 385



vea archivos semejantes: http://130.149.60.45/~farbmetrik/RS55/RS55LONA.TXT /PS
información técnica: http://www.ps.bam.de o http://130.149.60.45/~farbmetrik

TUB matrícula: 20130201-RS55/RS55LONA.TXT /PS
aplicación para la medida salida en la impresión offset, separación cmy6 (CMYK)
TUB material: code=rh4ta

http://130.149.60.45/~farbmetrik/RS55/RS55LONA.TXT /PS; salida de transferencia
N: ninguna 3D-linealización (OL) en archivo (F) o PS-startup (S), página 14/33

Data of Maximum color M in colorimetric system Offset standard print; separation cmycn6*, D65 for input or output; Six hue angles of the 60 degree standard colours RYGCMB; h_{ab,ds} = 30.0, 90.0, 150.0, 210.0, 270.0, 330.0;

Six hue angles of the device colours RYGCMB_d; h_{ab,d} = 32.8, 97.2, 157.8, 236.2, 296.4, 353.3; Six hue angles of the elementary colours RYGCMB_e; h_{ab,e} = 25.5, 92.3, 162.2, 217.0, 271.7, 328.6

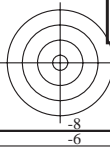
Table with columns: h_{ab,d}, h_{ab,s}, h_{ab,e}, rgbb*_{dd361M}, LAB*_{ddx361Mi} (x=LabCh), C_d, rgbb*_{ds361Mi}, LAB*_{dsx361Mi} (x=LabCh), 210C_s, rgbb*_{dd361Mi}, LAB*_{de361Mi}, LAB*_{dex361Mi} (x=LabCh), 216C_e, rgbb*_{dd361Mi}, rgbb*_{dd}, rgbb*_{ds}, rgbb*_{de}

vea archivos semejantes: http://130.149.60.45/~farbmetrik/RS55/RS55.HTM
información técnica: http://www.ps.bam.de o http://130.149.60.45/~farbmetrik

TUB matrícula: 20130201-RS55/RS55LONA.TXT /PS
TUB material: code=rh4t4
aplicación para la medida salida en la impresión offset, separación cmycn6 (CMYK)

gráfico TUB-RS55; 1080 colores estándar
círculo de tono, 48 pasos; rgb-LabCh*mesas

entrada: rgb/cmyk -> rgbe
salida: transfiera a cmyke



Data of Maximum color M in colorimetric system Offset standard print; separation cmyn6*, D65 for input or output; Six hue angles of the 60 degree standard colours RYGBCM_d: h_{ab,ds} = 30.0, 90.0, 150.0, 210.0, 270.0, 330.0;

Six hue angles of the device colours RYGBCM_d: h_{ab,d} = 32.8, 97.2, 157.8, 236.2, 296.4, 353.3; Six hue angles of the elementary colours RYGBCM_e: h_{ab,e} = 25.5, 92.3, 162.2, 217.0, 271.7, 328.6

Table with 24 columns: hab,d, hab,s, hab,e, rgbb*dd361M, LAB*dsx361Mi (x=LabCh), rgbb*ds361Mi, LAB*dsx361Mi (x=LabCh), rgbb*dd361Mi, rgbb*de361Mi, LAB*dex361Mi (x=LabCh), rgbb*dd361Mi, and three columns for colorimetric values (rgbb*dd, rgbb*ds, rgbb*de). Rows 333-360.

vea archivos semejantes: http://130.149.60.45/~farbmetrik/RS55/RS55.HTM información técnica: http://www.ps.bam.de o http://130.149.60.45/~farbmetrik

TUB matrícula: 20130201-RS55/RS55LONA.TXT /.PS TUB material: code=rh4ta aplicación para la medida salida en la impresión offset, separación cmyn6 (CMYK)

2-0131530-L0 RS550-71 LAB*la0, YN=0%, XYZnw=2.4, 2.5, 2.6, 85.1, 88.8, 104.3, LAB*nw=17.7, 0.0, 0.0. 95.5, 0.0, 0.0

salida: Offset standard print; separation cmyn6*, D65, página 16/33

gráfico TUB-RS55; 1080 colores estándar círculo de tono, 48 pasos; rgb-LabCh*mesas

entrada: rgb/cmyk -> rgb_e salida: transfiera a cmyk_e

Data of Maximum color M in colorimetric system Offset standard print; separation cmyn6*, D65 for input or output; Six hue angles of the 60 degree standard colours RYGBCM₆: h_{ab,ds} = 30.0, 90.0, 150.0, 210.0, 270.0, 330.0;

Six hue angles of the device colours RYGBCM_d: h_{ab,d} = 32.8, 97.2, 157.8, 236.2, 296.4, 353.3; Six hue angles of the elementary colours RYGBCM_e: h_{ab,e} = 25.5, 92.3, 162.2, 217.0, 271.7, 328.6

Table with columns for device colors (h_ab,d, h_ab,s, h_ab,e, rgb*_dd361M), LAB* (LAB*, ddx361Mi), dsx361Mi (x=LabCh), rgb*_dd361Mi, de361Mi, dex361Mi (x=LabCh), and rgb*_dd361Mi. Rows 360-392.

2-0131630-L0 RS550-71 LAB*la0, YN=0%, XYZnw=2.4, 2.5, 2.6, 85.1, 88.8, 104.3, LAB*nw=17.7, 0.0, 0.0 95.5, 0.0, 0.0

salida: Offset standard print; separation cmyn6*, D65, página 17/33

gráfico TUB-RS55; 1080 colores estándar círculo de tono, 48 pasos; rgb-LabCh*mesas

entrada: rgb/cmyk -> rgb_e salida: transfiera a cmyk_e

vea archivos semejantes: http://130.149.60.45/~farbmetrik/RS55/RS55.HTM información técnica: http://www.ps.bam.de o http://130.149.60.45/~farbmetrik

TUB matrícula: 20130201-RS55/RS55L0NA.TXT /.PS TUB material: code=rh4ta aplicación para la medida salida en la impresión offset, separación cmyn6 (CMYK)



http://130.149.60.45/~farbmetrik/RS55/RS55LONA.TXT /.PS; salida de transferencia N: ninguna 3D-linealización (OL) en archivo (F) o PS-startup (S), página 18/33

Table with columns: nuf, HHC*Fe, rpb*Fe, icr*Fe, hsa*Fe, rpb*Fe, LabCh*Fe, rpb*Fe, DF*Fe, hAm*Fe, LabCh*Fe, rpb*Fe, LabCh*Fe, rpb*Fe, delta E** = 17.3

entrada: rgb/cmyk -> rgbe salida: transfiera a cmyke

gráfico TUB-RS55; 1080 colores estándar colores y diferencia en color, ΔE*

http://130.149.60.45/~farbmetrik/RS55/RS55LONA.TXT /.PS; salida de transferencia N: ninguna 3D-linealización (OL) en archivo (F) o PS-startup (S), página 19/33

Table with 15 columns: nuf, HHC*Fe, rpb*Fe, iet*Fe, hsa*Fe, rpb*Fe, LabCH*Fe, LabCH*Fe, rpb*Fe, DF*Fe, hsa*Me, rpb*Me, LabCH*Me, rpb*Me, and values. The table contains 45 rows of data.

entrada: rgb/cmyk -> rgbe salida: transfiera a cmyke

gráfico TUB-RS55; 1080 colores estándar colores y diferencia en color, ΔE*

2-0131830-F0

RS550-TN; 19/33-F

delta E* = 12,3

http://130.149.60.45/~farbmetrik/RS55/RS55LONA.TXT /.PS; salida de transferencia N: ninguna 3D-linealización (OL) en archivo (F) o PS-startup (S), página 20/33

Table with 80 columns (numbered 1-80) and 80 rows (numbered 1-80). Each cell contains numerical data representing color calibration values for various color patches.

entrada: rgb/cmyk -> rgbe salida: transfiera a cmyke

gráfico TUB-RS55; 1080 colores estándar colores y diferencia en color, ΔE*



Table with 16 columns: n, HHC*Fe, rgb*Fe, icr*Fe, hsa*Fe, rgb*Fe, LabCH*Fe, LabCH*Fe, LabCH*Fe, rgb*Fe, DF*Fe, hsa*Fe, rgb*Fe, LabCH*Fe, LabCH*Fe, LabCH*Fe. Rows 81-161.

entrada: rgb/cmyk -> rgbe salida: transfiera a cmyke

gráfico TUB-RS55; 1080 colores estándar colores y diferencia en color, ΔE*

RS550-TN; 21033-F

2-0132030-F0

TUB matrícula: 20130201-RS55/RS55LONA.TXT / .PS TUB material: code=rha4ta aplicación para la medida salida en la impresión offset, separación cmykn6 (CMYK)

Table with 24 columns: n, HHC*Fe, rpb*Fe, icr*Fe, Hs*Fe, rpb*Fe, LabCH*Fe, LabCH*Fe, rpb*Fe, rpb*Fe, LabCH*Fe, DF*Fe, rpb*Fe, LabCH*Fe, rpb*Fe, LabCH*Fe, DF*Fe, rpb*Fe, LabCH*Fe, rpb*Fe, LabCH*Fe, DF*Fe, rpb*Fe, LabCH*Fe, rpb*Fe. The table contains numerical data for various color calibration points.

entrada: rgb/cmyk -> rgbe salida: transfiera a cmyke

gráfico TUB-RS55; 1080 colores estándar colores y diferencia en color, ΔE*

RS550-TN; 22/33-F

vea archivos semejantes: http://130.149.60.45/~farbmetrik/RS55/RS55.HTM información técnica: http://www.ps.bam.de o http://130.149.60.45/~farbmetrik

Table with 15 columns: n, HHC*Fc, rpb*Fc, icr*Fc, Hs*Fc, rpb*Fc, LabCH*Fc, LabCH*Fe, rpb*Fe, LabCH*Fe, DF*Fe, Hs*Me, rpb*Me, LabCH*Me, LabCH*Ye, rpb*Ye, DF*Ye, Hs*Ye. Rows include color codes like R00Y, R05Y, B00M, etc.

delta E* = 12.8

entrada: rgb/cmyk -> rgbe salida: transfiera a cmyke

TUB matrícula: 20130201-RS55/RS55LONA.TXT /.PS TUB material: code=rha4ta aplicación para la medida salida en la impresión offset, separación cmykn6 (CMYK)

http://130.149.60.45/~farbmetrik/RS55/RS55LONA.TXT /.PS; salida de transferencia N: ninguna 3D-linealización (OL) en archivo (F) o PS-startup (S), página 26/33

Table with columns: n, HHC*Fe, rgb*Fe, iet*Fe, ihs*Fe, rgb*Fe, LabCh*Fe, LabCh*Fe, LabCh*Fe, DF*Fe, Ham*Fe, rgb*Fe, LabCh*Fe. Rows list color codes and their corresponding values.

delta E* = 12.8

gráfico TUB-RS55; 1080 colores estándar colores y diferencia en color, ΔE*

entrada: rgb/cmyk -> rgbe salida: transfiera a cmyke

vea archivos semejantes: http://130.149.60.45/~farbmetrik/RS55/RS55.HTM información técnica: http://www.ps.bam.de o http://130.149.60.45/~farbmetrik

http://130.149.60.45/~farbmetrik/RS55/RS55LONA.TXT /.PS; salida de transferencia N: ninguna 3D-linealización (OL) en archivo (F) o PS-startup (S), página 27/33

Table with 15 columns: n, HHC*Fe, rpb*Fe, icr*Fe, Hs*Fe, rpb*Fe, LabCH*Fe, LabCH*Fe, rpb*Fe, rpb*Fe, LabCH*Fe, DF*Fe, rpb*Fe, LabCH*Fe, rpb*Fe. Rows contain numerical data for various color and registration marks.

entrada: rgb/cmyk -> rgbe salida: transfiera a cmyke

gráfico TUB-RS55; 1080 colores estándar colores y diferencia en color, ΔE*

RS550-7N; 27/33-F

2-0132630-F0

http://130.149.60.45/~farbmetrik/RS55/RS55LONA.TXT /.PS; salida de transferencia N: ninguna 3D-linealización (OL) en archivo (F) o PS-startup (S), página 29/33

Table with 10 columns: n, H/C/F, RGB, CMY, HSB, Lab, L*a*b*, DFE, H*a*b*, RGB, CMY, Lab, L*a*b*, DFE, H*a*b*. Rows 729-809.

delta E** = 9.3

entrada: rgb/cmyk -> rgbe salida: transfiera a cmyke

gráfico TUB-RS55; 1080 colores estándar colores y diferencia en color, ΔE*

http://130.149.60.45/~farbmetrik/RS55/RS55LONA.TXT /.PS; salida de transferencia N: ninguna 3D-linealización (OL) en archivo (F) o PS-startup (S), página 30/33

Table with 15 columns: n, HHC*Fe, rpb*Fe, icr*Fe, hsa*Fe, LabCh*Fe, LabCh*Fe, LabCh*Fe, LabCh*Fe, LabCh*Fe, LabCh*Fe, LabCh*Fe, LabCh*Fe, LabCh*Fe, LabCh*Fe. Rows contain numerical data for various color patches.

entrada: rgb/cmyk -> rgbe salida: transfiera a cmyke

gráfico TUB-RS55; 1080 colores estándar colores y diferencia en color, ΔE*

RS550-TN; 30/33-F

2-013290-F0

Table with 10 columns: n, H/C/Fc, rg/Bc, ic/Lc, Hs/Fc, rg/Bc, LabCh/Fc, LabCh/Fc, rg/Bc, LabCh/Fc, DF/Fc, Hs/Fc, LabCh/Fc, rg/Bc, LabCh/Fc, LabCh/Fc. Rows 891-971.

entrada: rgb/cmyk -> rgbe salida: transfiera a cmyke

gráfico TUB-RS55; 1080 colores estándar colores y diferencia en color, ΔE*

RS550-TN; 31/33-F

2-013300-F0

TUB matrícula: 20130201-RS55/RS55LONA.TXT /.PS TUB material: code=rha4ta
aplicación para la medida salida en la impresión offset, separación cmykn6 (CMYK)

http://130.149.60.45/~farbmetrik/RS55/RS55LONA.TXT /.PS; salida de transferencia
N: ninguna 3D-linealización (OL) en archivo (F) o PS-startup (S), página 32/33

Table with columns: n, HHC*Fe, rgb*Fe, iet*Fe, lra*Fe, rgb*Fe, LabC*Fe, LabCH*Fe, rgb*Fe, LabCH*Fe, DF*Fe, rha*Me, rgb*Me, LabCH*Me, and delta_F**.

vea archivos semejantes: http://130.149.60.45/~farbmetrik/RS55/RS55.HTM
información técnica: http://www.ps.bam.de o http://130.149.60.45/~farbmetrik

entrada: rgb/cmyk -> rgb
salida: transfiera a cmyke

gráfico TUB-RS55; 1080 colores estándar
colores y diferencia en color, ΔE*

n	HC*Fe	rgb*Fe	LabC*Fe	LabCH*Fe	rgb*Fe	LabCH*Fe	DF*Fe	Has*Fe	rgb*Me	LabCH*Me	DF*Me	Has*Me	rgb*Me	LabCH*Me	DF*Me	Has*Me
1053	NW_086e	0.866	0.866	85.0	0.866	85.0	0.0	0.0	0.866	0.866	0.0	0.0	0.866	0.866	0.0	0.0
1054	NW_093e	0.933	0.933	90.2	0.933	90.2	0.0	0.0	0.933	0.933	0.0	0.0	0.933	0.933	0.0	0.0
1055	NW_100e	1.0	1.0	95.4	1.0	95.4	0.0	0.0	1.0	1.0	0.0	0.0	1.0	1.0	0.0	0.0
1056	NW_100e	0.0	0.0	0.0	0.0	0.0	0.0	0.0	0.0	0.0	0.0	0.0	0.0	0.0	0.0	0.0
1057	NW_100e	0.066	0.066	22.8	0.066	22.8	0.0	0.0	0.066	0.066	0.066	0.066	0.066	0.066	0.066	0.066
1058	NW_013e	0.133	0.133	28.0	0.133	28.0	0.0	0.0	0.133	0.133	0.133	0.133	0.133	0.133	0.133	0.133
1059	NW_020e	0.2	0.2	33.2	0.2	33.2	0.0	0.0	0.2	0.2	0.2	0.2	0.2	0.2	0.2	0.2
1060	NW_026e	0.266	0.266	38.3	0.266	38.3	0.0	0.0	0.266	0.266	0.266	0.266	0.266	0.266	0.266	0.266
1061	NW_033e	0.333	0.333	43.6	0.333	43.6	0.0	0.0	0.333	0.333	0.333	0.333	0.333	0.333	0.333	0.333
1062	NW_040e	0.4	0.4	48.8	0.4	48.8	0.0	0.0	0.4	0.4	0.4	0.4	0.4	0.4	0.4	0.4
1063	NW_046e	0.466	0.466	53.9	0.466	53.9	0.0	0.0	0.466	0.466	0.466	0.466	0.466	0.466	0.466	0.466
1064	NW_053e	0.533	0.533	59.1	0.533	59.1	0.0	0.0	0.533	0.533	0.533	0.533	0.533	0.533	0.533	0.533
1065	NW_060e	0.6	0.6	64.3	0.6	64.3	0.0	0.0	0.6	0.6	0.6	0.6	0.6	0.6	0.6	0.6
1066	NW_066e	0.666	0.666	69.5	0.666	69.5	0.0	0.0	0.666	0.666	0.666	0.666	0.666	0.666	0.666	0.666
1067	NW_073e	0.734	0.734	74.7	0.734	74.7	0.0	0.0	0.734	0.734	0.734	0.734	0.734	0.734	0.734	0.734
1068	NW_080e	0.8	0.8	79.9	0.8	79.9	0.0	0.0	0.8	0.8	0.8	0.8	0.8	0.8	0.8	0.8
1069	NW_086e	0.866	0.866	85.0	0.866	85.0	0.0	0.0	0.866	0.866	0.866	0.866	0.866	0.866	0.866	0.866
1070	NW_093e	0.933	0.933	90.2	0.933	90.2	0.0	0.0	0.933	0.933	0.933	0.933	0.933	0.933	0.933	0.933
1071	NW_100e	1.0	1.0	95.4	1.0	95.4	0.0	0.0	1.0	1.0	1.0	1.0	1.0	1.0	1.0	1.0
1072	NW_100e	0.0	0.0	0.0	0.0	0.0	0.0	0.0	0.0	0.0	0.0	0.0	0.0	0.0	0.0	0.0
1073	NW_100e	1.0	1.0	95.4	1.0	95.4	0.0	0.0	1.0	1.0	1.0	1.0	1.0	1.0	1.0	1.0
1074	ROY_100_100e	0.0	0.0	0.0	0.0	0.0	0.0	0.0	0.0	0.0	0.0	0.0	0.0	0.0	0.0	0.0
1075	GS0B_100_100e	0.0	0.0	0.0	0.0	0.0	0.0	0.0	0.0	0.0	0.0	0.0	0.0	0.0	0.0	0.0
1076	Y06C_100_100e	0.0	0.0	0.0	0.0	0.0	0.0	0.0	0.0	0.0	0.0	0.0	0.0	0.0	0.0	0.0
1077	B06C_100_100e	0.0	0.0	0.0	0.0	0.0	0.0	0.0	0.0	0.0	0.0	0.0	0.0	0.0	0.0	0.0
1078	B08C_100_100e	0.0	0.0	0.0	0.0	0.0	0.0	0.0	0.0	0.0	0.0	0.0	0.0	0.0	0.0	0.0
1079	B50R_100_100e	0.0	0.0	0.0	0.0	0.0	0.0	0.0	0.0	0.0	0.0	0.0	0.0	0.0	0.0	0.0

delta E* = 7.6

http://130.149.60.45/~farbmetrik/RS55/RS55L0NA.TXT /.PS; salida de transferencia
N: ninguna 3D-linealización (OL) en archivo (F) o PS-startup (S), página 33/33

entrada: rgb/cmyk -> rgbe
salida: transfiera a cmyke

gráfico TUB-RS55; 1080 colores estándar
colores y diferencia en color, ΔE*