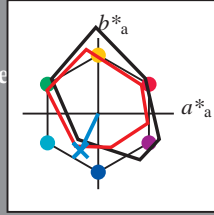


Entrada i salida: Printer Reflective System FRS06a for relative CIELAB hue $h_{ab,a,rel} = h_{ab}/360 = 244/360 = 0.67$

Datos del dispositivo (d) o elemental (e) color:
 HIC^*_{e}
código de tono para los colores esta página:
 $H^*_{e} = G75B_{e}$
triángulo claridad T^*



LRS18a; datos adaptados CIELAB (a)

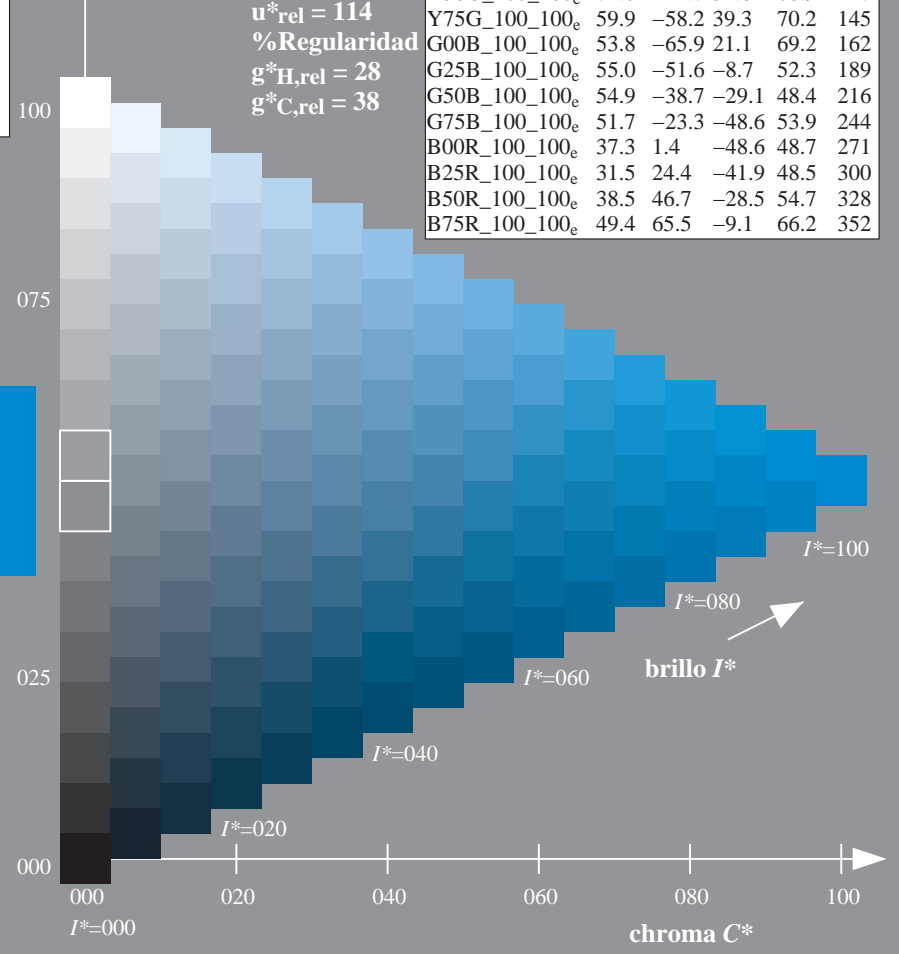
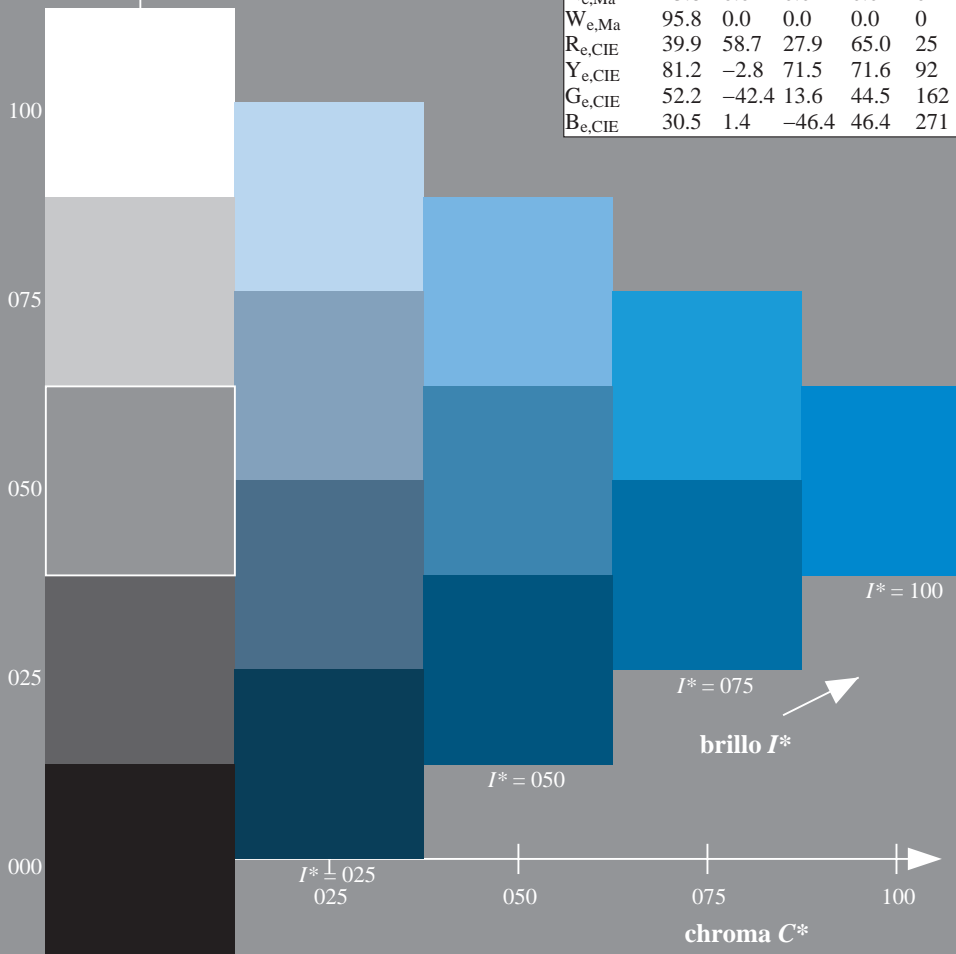
| name | $L^*=L^*_a$ | a^*_a | b^*_a | $C^*_{ab,a}$ | $h^*_{ab,a}$ |
|--------------|-------------|---------|---------|--------------|--------------|
| $R_{e, Ma}$ | 47.5 | 56.0 | 26.7 | 62.1 | 25 |
| $Y_{e, Ma}$ | 83.6 | -3.1 | 76.8 | 76.9 | 92 |
| $G_{e, Ma}$ | 53.8 | -65.9 | 21.1 | 69.2 | 162 |
| $C_{e, Ma}$ | 54.9 | -38.7 | -29.1 | 48.4 | 216 |
| $B_{e, Ma}$ | 37.3 | 1.4 | -48.6 | 48.7 | 271 |
| $M_{e, Ma}$ | 38.5 | 46.7 | -28.5 | 54.7 | 328 |
| $N_{e, Ma}$ | 23.8 | 0.0 | 0.0 | 0.0 | 0 |
| $W_{e, Ma}$ | 95.8 | 0.0 | 0.0 | 0.0 | 0 |
| $R_{e, CIE}$ | 39.9 | 58.7 | 27.9 | 65.0 | 25 |
| $Y_{e, CIE}$ | 81.2 | -2.8 | 71.5 | 71.6 | 92 |
| $G_{e, CIE}$ | 52.2 | -42.4 | 13.6 | 44.5 | 162 |
| $B_{e, CIE}$ | 30.5 | 1.4 | -46.4 | 46.4 | 271 |

Los datos de color máximo (Ma):

$LabCh^*_{e, Ma}$: 51 -23 -48 53 244
 $HIC^*_{e, Ma}$: G75B_100_100_e
 $rgbic^*_{e, Ma}$:
0.0 0.68 1.0 1.0 1.0
triángulo claridad T^*

LRS18a; datos adaptados CIELAB (a)

| H^*_{e} | $L^*=L^*_a$ | a^*_a | b^*_a | $C^*_{ab,a}$ | $h^*_{ab,a}$ |
|----------------|-------------|---------|---------|--------------|--------------|
| R00Y_100_100_e | 47.5 | 56.0 | 26.7 | 62.1 | 25 |
| R25Y_100_100_e | 51.4 | 54.8 | 47.7 | 72.6 | 41 |
| R50Y_100_100_e | 61.8 | 35.2 | 58.4 | 68.2 | 58 |
| R75Y_100_100_e | 72.3 | 16.1 | 68.2 | 70.1 | 76 |
| Y00G_100_100_e | 83.6 | -3.1 | 76.8 | 76.9 | 92 |
| Y25G_100_100_e | 85.8 | -26.4 | 78.5 | 82.9 | 108 |
| Y50G_100_100_e | 71.0 | -41.7 | 54.8 | 68.9 | 127 |
| Y75G_100_100_e | 59.9 | -58.2 | 39.3 | 70.2 | 145 |
| G00B_100_100_e | 53.8 | -65.9 | 21.1 | 69.2 | 162 |
| G25B_100_100_e | 55.0 | -51.6 | -8.7 | 52.3 | 189 |
| G50B_100_100_e | 54.9 | -38.7 | -29.1 | 48.4 | 216 |
| G75B_100_100_e | 51.7 | -23.3 | -48.6 | 53.9 | 244 |
| B00R_100_100_e | 37.3 | 1.4 | -48.6 | 48.7 | 271 |
| B25R_100_100_e | 31.5 | 24.4 | -41.9 | 48.5 | 300 |
| B50R_100_100_e | 38.5 | 46.7 | -28.5 | 54.7 | 328 |
| B75R_100_100_e | 49.4 | 65.5 | -9.1 | 66.2 | 352 |



vea archivos semejantes: http://130.149.60.45/~farbmetrik/RS09/RS09.HTM
información técnica: http://www.ps.bam.de o http://130.149.60.45/~farbmetrik

TUB matrícula: 20130201-RS09/RS09LONP.PDF /.PS
aplicación para la medida salida de impresora láser, separación cmyñ6 (CMYK)
TUB material: code=thad4ta

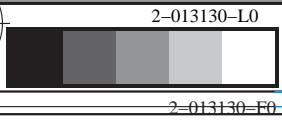


gráfico TUB-RS09; código de tono: $H^*_{e}=G75B_{e}$
gráfico según a DIN 33872, 3D=0, de=1, cmyk

entrada: $rgb/cmyk \rightarrow rgb_e$
salida: transfiera a $cmyk_e$

