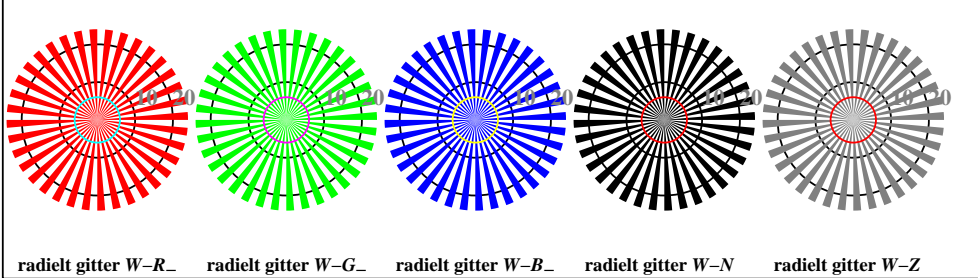


se lignende filer: <http://130.149.60.45/~farbmetrik/RN97/RN97L0FP.PDF> / .PS
teknisk informasjon: <http://www.ps.bam.de> eller <http://130.149.60.45/~farbmetrik>

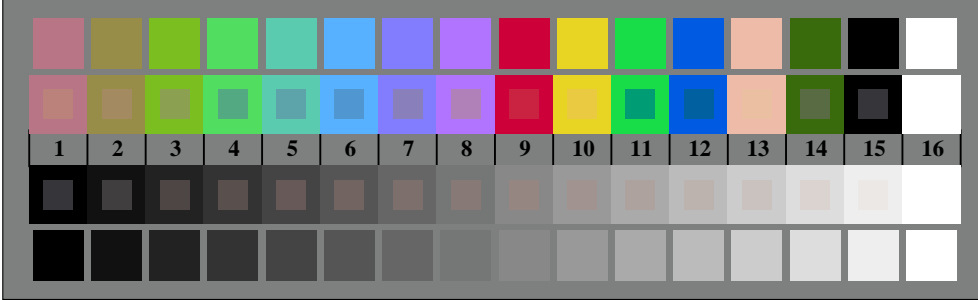
TUB registrering: 20150701-RN97/RN97L0FP.PDF / .PS
anvendelse for måling av offsettrykk output



RN970-3, Figur D1W-: og 2 + 16 gråtrinn (sf); ; PS 4 colorimage



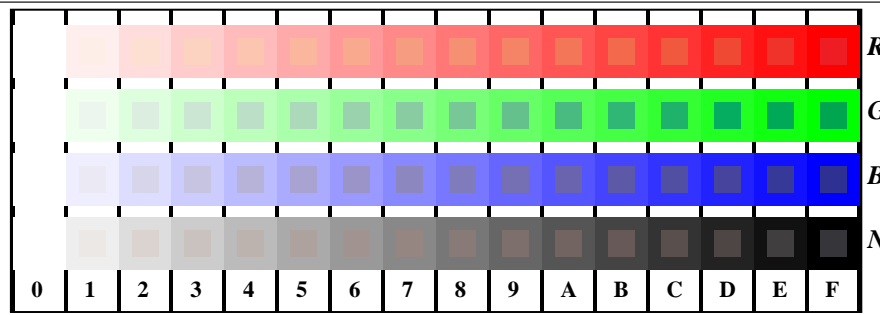
RN970-5, Figur D2W-: radielt gitter W-R-; W-G-; W-B-; W-N; PS operator rgb->rgb_setrgbcolor



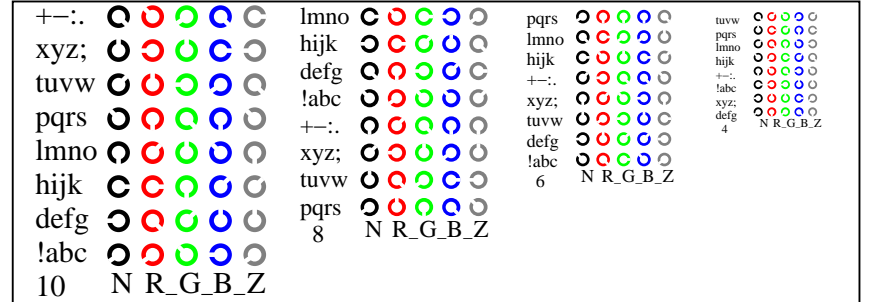
RN970-7, Figur D3W-: 14 CIE-prøvefarger og 2 + 16 gråtrinn (sf); rgb/cmy0 set(rgb/cmyk)color



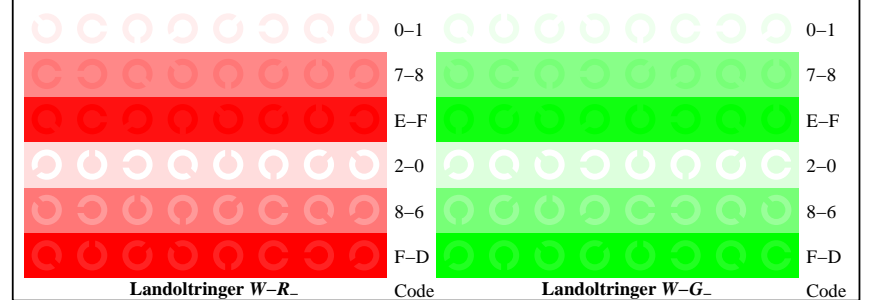
prøveplansje RN97; 4(ISO/IEC 15775 + ISO/IEC TR 24705)input: rgb/cmyk -> w/rgb/cmyk-
kromatisk prøveplansje RGB output: ingen ending



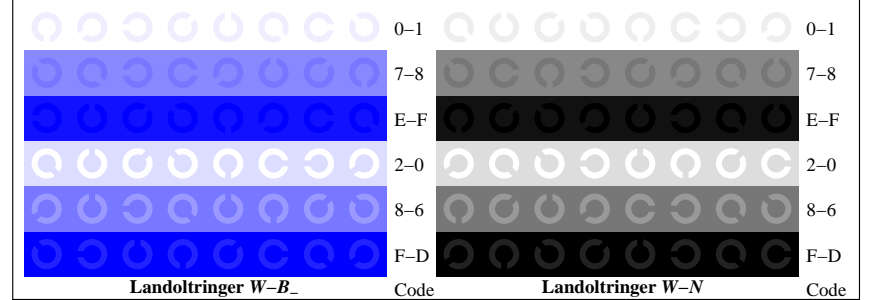
RN971-1, Figur D4W-: 16 ekvidistante trinn W-R-; W-G-; W-B-; W-N; rgb/cmy0 set(rgb/cmyk)color



RN971-3, Figur D5W-: Skrift Landoltringer N; R-; G-; B-; Z; PS operator rgb->rgb_setrgbcolor



RN971-5, Figur D6W-: Landoltringer W-R-; W-G-; PS operator rgb_setrgbcolor



RN971-7, Figur D7W-: Landoltringer W-B-; W-N; PS operator rgb_setrgbcolor

TUB-material: code=rh4ta