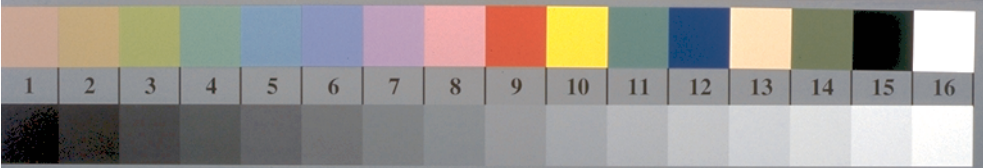
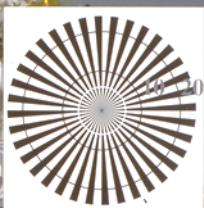
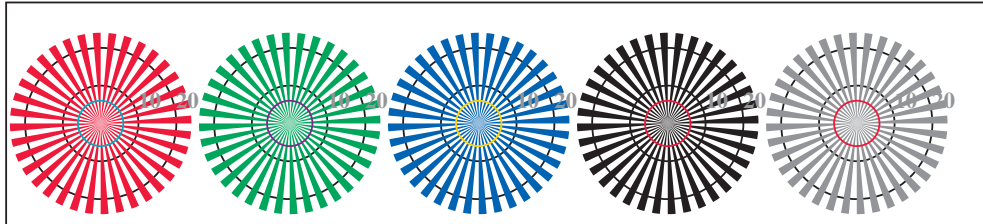


http://130.149.60.45/~farbmetrik/RN97/RN97L0NP.PDF / .PS; overføring output
N: ingen 3D-linearisering (OL) i fil (F) eller PS-startup (S), side 2/2

se lignende filer: http://130.149.60.45/~farbmetrik/RN97/RN97.HTM
teknisk informasjon: http://www.ps.bam.de eller http://130.149.60.45/~farbmetrik

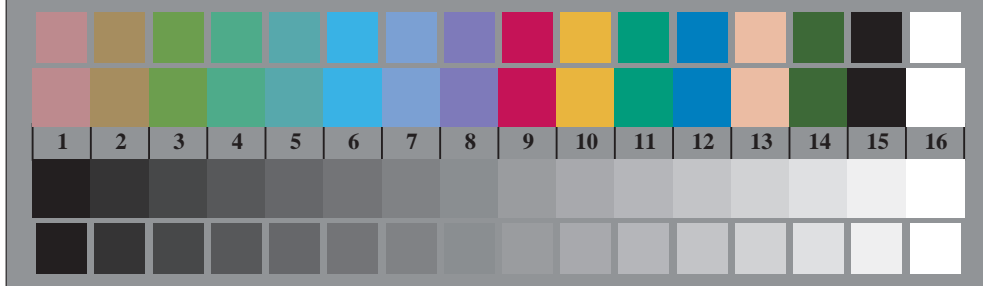


RN970-3, Figur D1We: og 2 + 16 gråtrinn (sf); ; PS 4 colorimage



radielt gitter W-R_e radielt gitter W-G_e radielt gitter W-B_e radielt gitter W-N radielt gitter W-Z

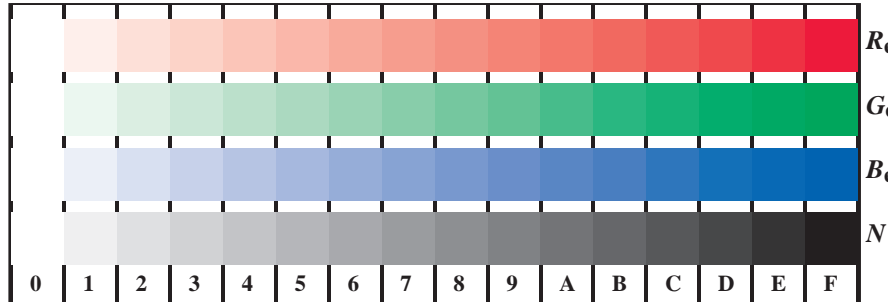
RN970-5, Figur D2We: radielt gitter W-R_e; W-G_e; W-B_e; W-N; PS operator rgb->rgb_e setrgbcolor



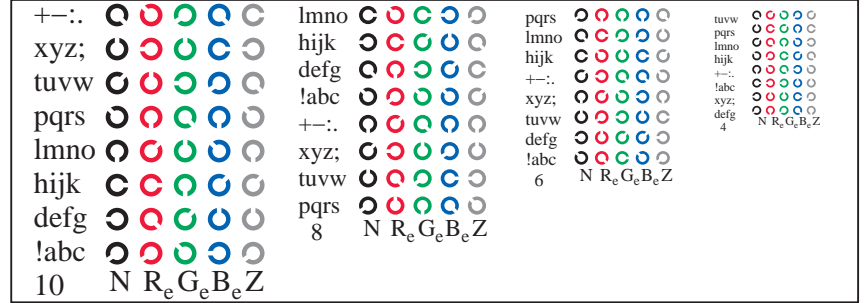
RN970-7, Figur D3We: 14 CIE-prøvefarger og 2 + 16 gråtrinn (sf); rgb/cmyk0->rgb_e setrgbcolor



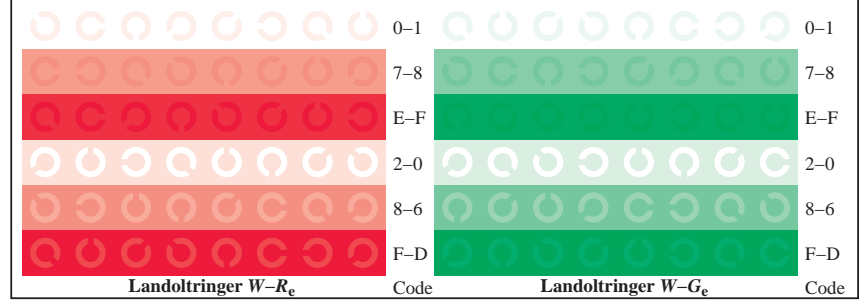
prøveplansje RN97; 4(ISO/IEC 15775 + ISO/IEC TR 24705)input: rgb/cmyk -> rgb_e
kromatisk prøveplansje RGB, 3D=0, de=1, cmyk
output: overføring til cmyk_e



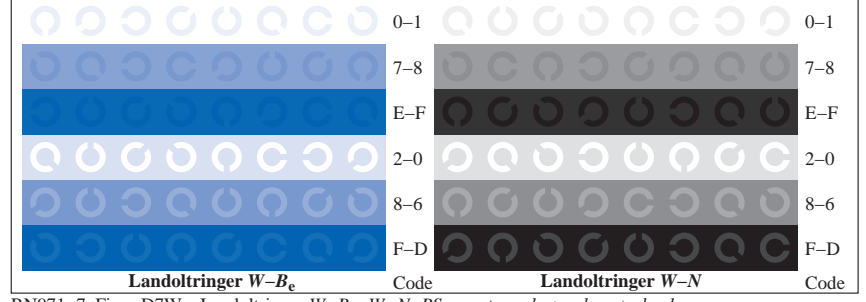
RN971-1, Figur D4We: 16 ekvidistante trinn W-R_e; W-G_e; W-B_e; W-N; rgb/cmyk0->rgb_e setrgbcolor



RN971-3, Figur D5We: Skrift Landoltringer N; R_e; G_e; B_e; Z; PS operator rgb->rgb_e setrgbcolor



RN971-5, Figur D6We: Landoltringer W-R_e; W-G_e; PS operator rgb->rgb_e setrgbcolor



RN971-7, Figur D7We: Landoltringer W-B_e; W-N; PS operator rgb->rgb_e setrgbcolor

TUB registrering: 20150701-RN97/RN97L0NP.PDF / .PS
anvendelse for måling av offsettrykk output, separasjoncmyk6 (CMYK)
TUB-material: code=rh4ta