

http://130.149.60.45/~farbmetrik/RN96/RN96L0FP.PDF /.PS; start output
F: 3D-linearisering RN96/RN96LJ30FP.DAT i fil (F), side 1/2

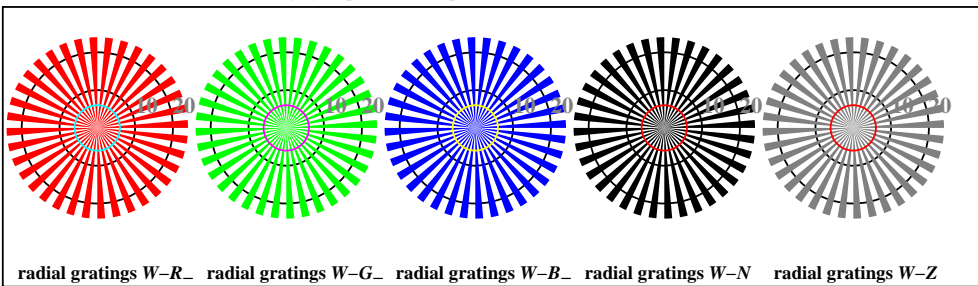
se lignende filer: <http://130.149.60.45/~farbmetrik/RN96/RN96.HTM>
teknisk informasjon: <http://www.ps.bam.de> eller <http://130.149.60.45/~farbmetrik>

TUB registrering: 20150701-RN96/RN96L0FP.PDF /.PS
anvendelse for måling av display output

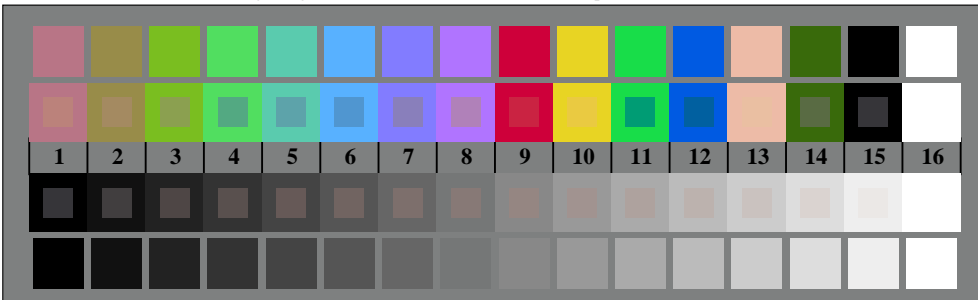
TUB-material: code=rh4ta



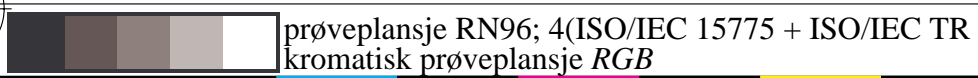
RN960-3, Picture D1W-: and 2 + 16 grey steps (sf); PS operator 3 colorimage



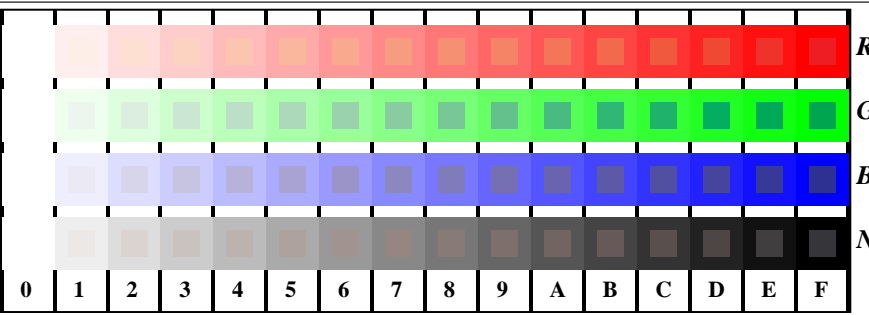
RN960-5, Picture D2W-: radial gratings W-R-; W-G-; W-B-; W-N; PS operator rgb->rgb_setrgbcolor



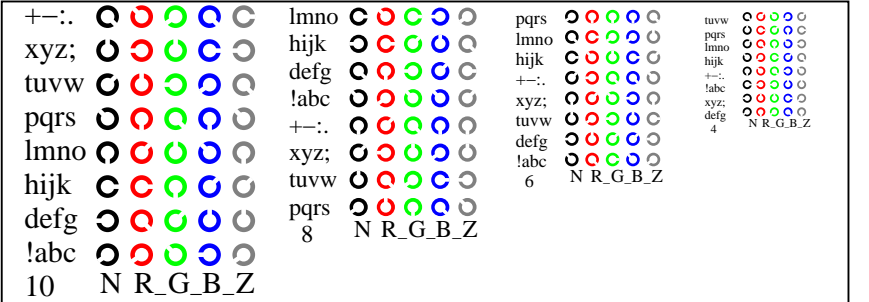
RN960-7, Picture D3W-: 14 CIE-test colours and 2 + 16 grey steps (sf); rgb/cmy0 set(rgb/cmyk)color



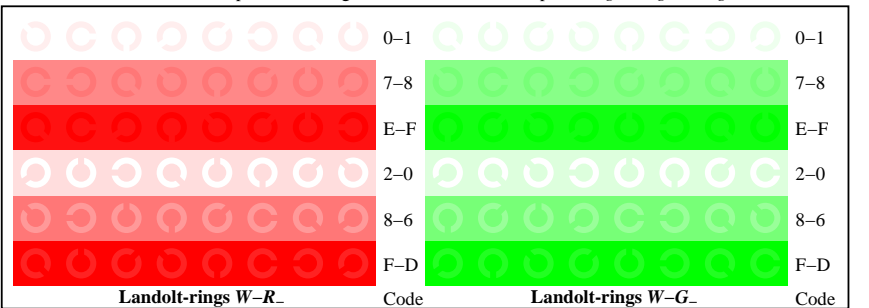
prøveplansje RN96; 4(ISO/IEC 15775 + ISO/IEC TR 24705)
kromatisk prøveplansje RGB



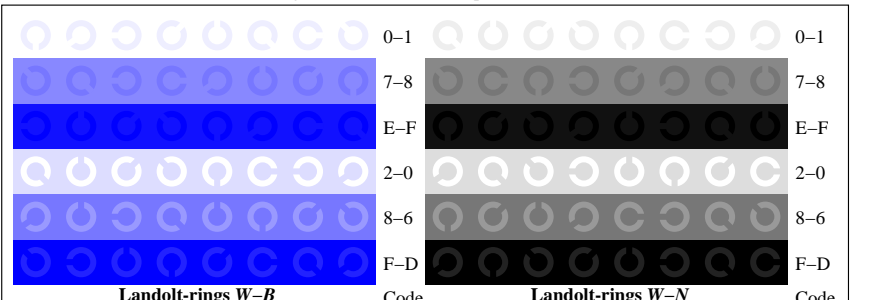
RN961-1, Picture D4W-: 16 equidistant steps W-R-; W-G-; W-B-; W-N; rgb/cmy0 set(rgb/cmyk)color



RN961-3, Picture D5W-: Script Landolt-rings N; R-; G-; B-; Z; PS operator rgb->rgb_setrgbcolor



RN961-5, Picture D6W-: Landolt-rings W-R-; W-G-; PS operator rgb_setrgbcolor



RN961-7, Picture D7W-: Landolt-rings W-B-; W-N; PS operator rgb_setrgbcolor

input: rgb/cmyk -> w/rgb/cmyk-
output: ingen endring

