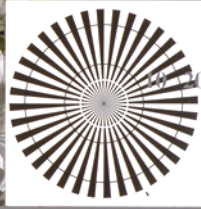


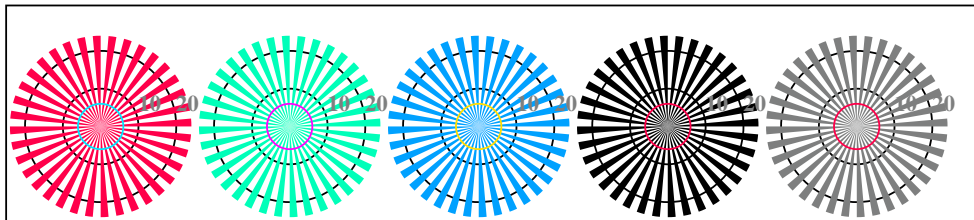
http://130.149.60.45/~farbmetrik/RE96/RE96L0FP.PDF /.PS; 3D-linearization  
F: 3D-linearization RE96/RE96LJ30FP.DAT in file (F), page 2/2



192 x 128  
384 x 256  
768 x 512  
1536 x 1024  
3072 x 2048

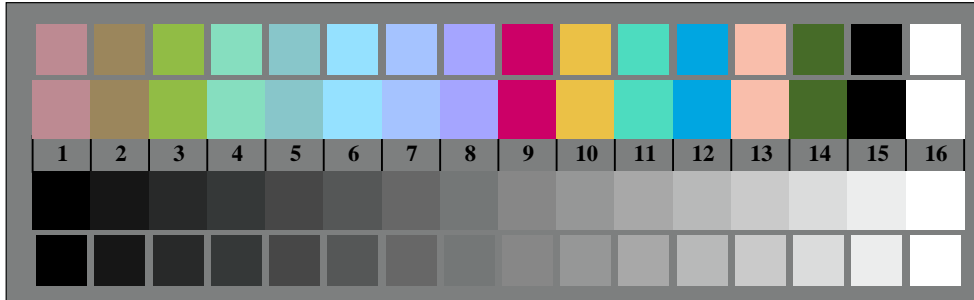


RE960-3, Picture D1Wde: and 2 + 16 grey steps (sf); ; PS operator 3 colorimage

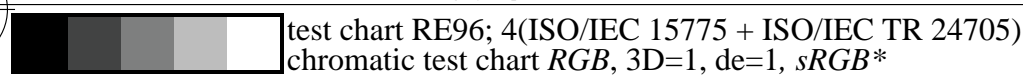


radial gratings W-Re radial gratings W-Ge radial gratings W-Be radial gratings W-N radial gratings W-Z

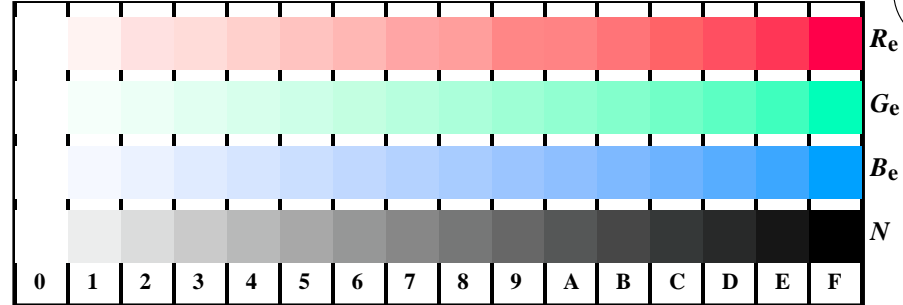
RE960-5, Picture D2Wde: radial gratings W-Re; W-Ge; W-Be; W-N; PS operator rgb->rgbde setrgbcolor



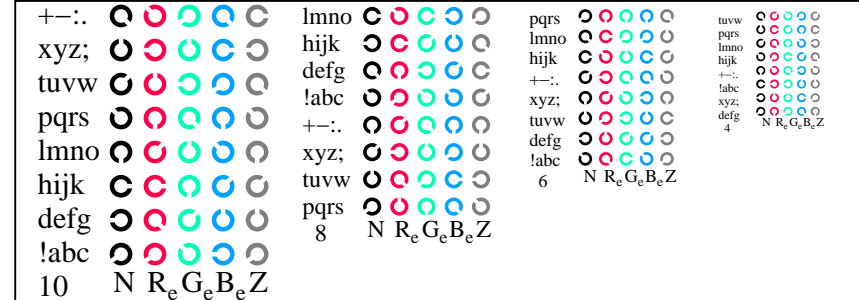
RE960-7, Picture D3Wde: 14 CIE-test colours and 2 + 16 grey steps (sf); rgb/cmyk0->rgbde setrgbcolor



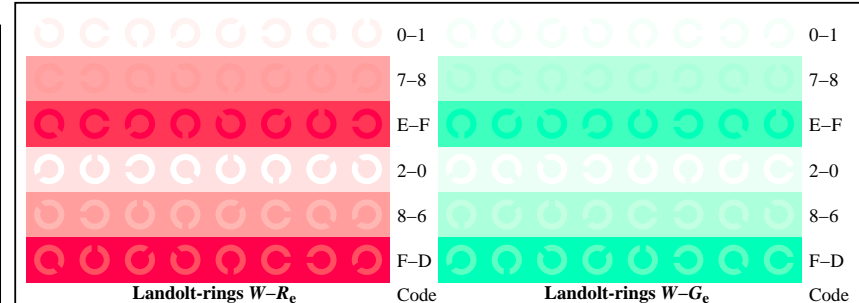
test chart RE96; 4(ISO/IEC 15775 + ISO/IEC TR 24705)  
chromatic test chart RGB, 3D=1, de=1, sRGB\*



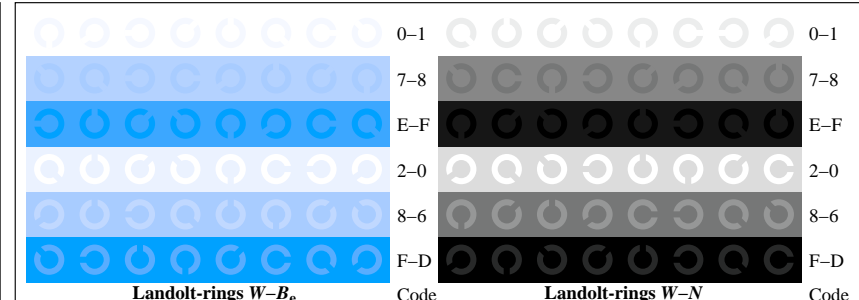
RE961-1, Picture D4Wde: 16 equidistant steps W-Re; W-Ge; W-Be; W-N; rgb/cmyk0->rgbde setrgbcolor



RE961-3, Picture D5Wde: Script Landolt-rings N; Re; Ge; Be; Z; PS operator rgb->rgbde setrgbcolor



RE961-5, Picture D6Wde: Landolt-rings W-Re; W-Ge; PS operator rgb->rgbde setrgbcolor



RE961-7, Picture D7Wde: Landolt-rings W-Be; W-N; PS operator rgb->rgbde setrgbcolor

input: rgb/cmyk -> rgbde  
output: 3D-linearization to rgb\*de

see similar files: http://130.149.60.45/~farbmetrik/RE96/RE96L0FP.PDF /.PS  
technical information: http://www.ps.bam.de or http://130.149.60.45/~farbmetrik

