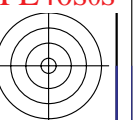
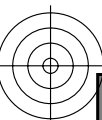


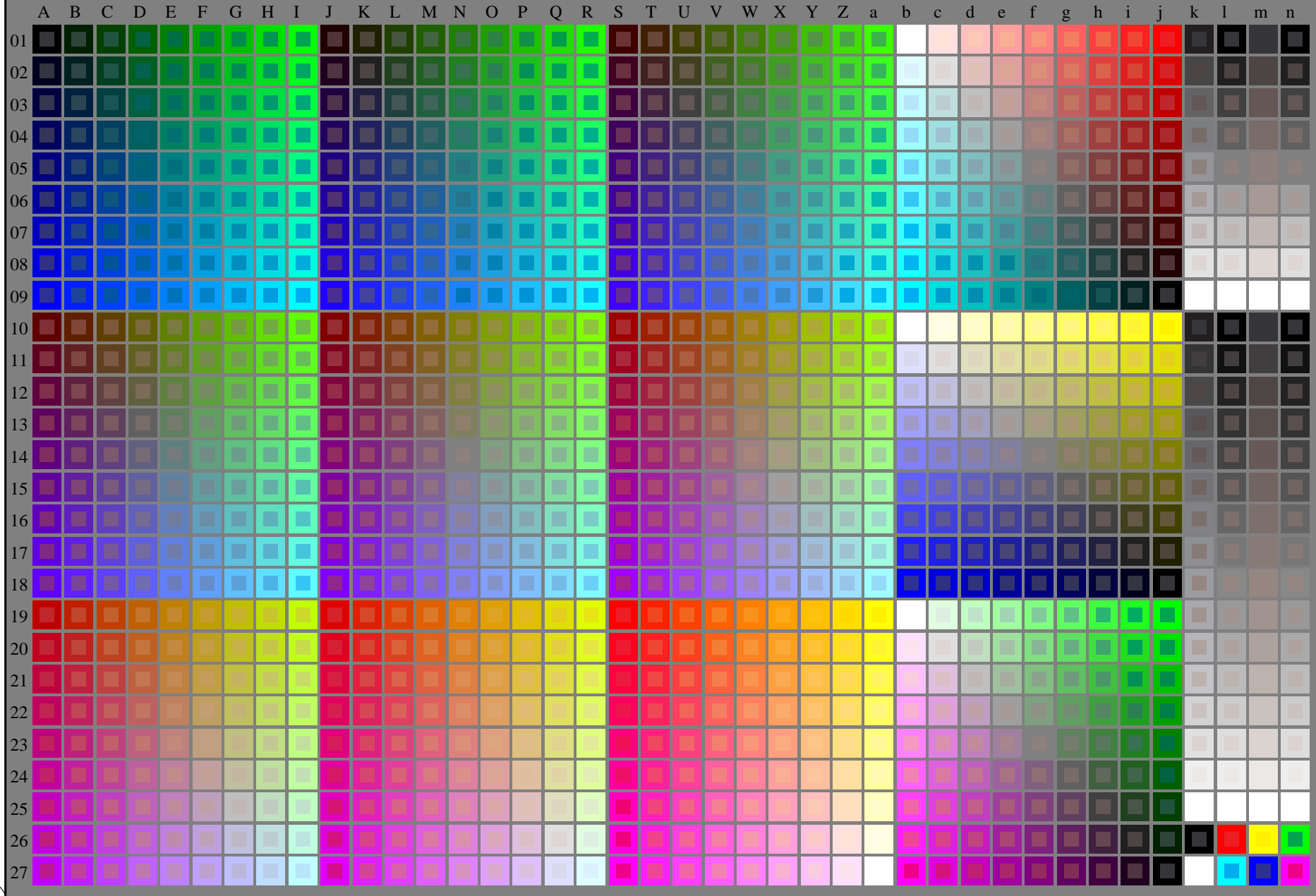
http://130.149.60.45/~farbmetrik/PE40/PE40L0NP.PDF /.PS; start output  
N: ingen 3D-linearisering (OL) i fil (F) eller PS-startup (S), side 1/2



se lignende filer: <http://130.149.60.45/~farbmetrik/PE40/PE40.HTM>  
teknisk informasjon: <http://www.ps.bam.de> eller <http://130.149.60.45/~farbmetrik>

TUB registrering: 20130201-PE40/PE40L0NP.PDF /.PS  
anvendelse for måling av display output

TUB-material: code=rh4ta



5-003030-L0

PE400-7N

Prøveplasje G med 1080 farger; 9- eller 16-trinns fargeskala; data i kolonne (A-n): **rgb + cmy0** (A\_j + k26\_n27), 000n (k), w (l), nnn0 (m), www (n), 3D = 0

TUB-prøveplasje PE40; standard test chart  
1080 standard farger; billed-teknologi

input: *rgb/cmyk* -> *rgb/cmyk*  
output: ingen endring

