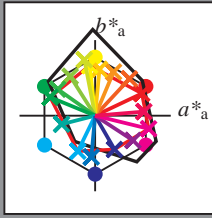


Input og output: Laserer-Reflektiv-System LRS18a

Data for ethvert apparat (d) eller elementærfarge (e):

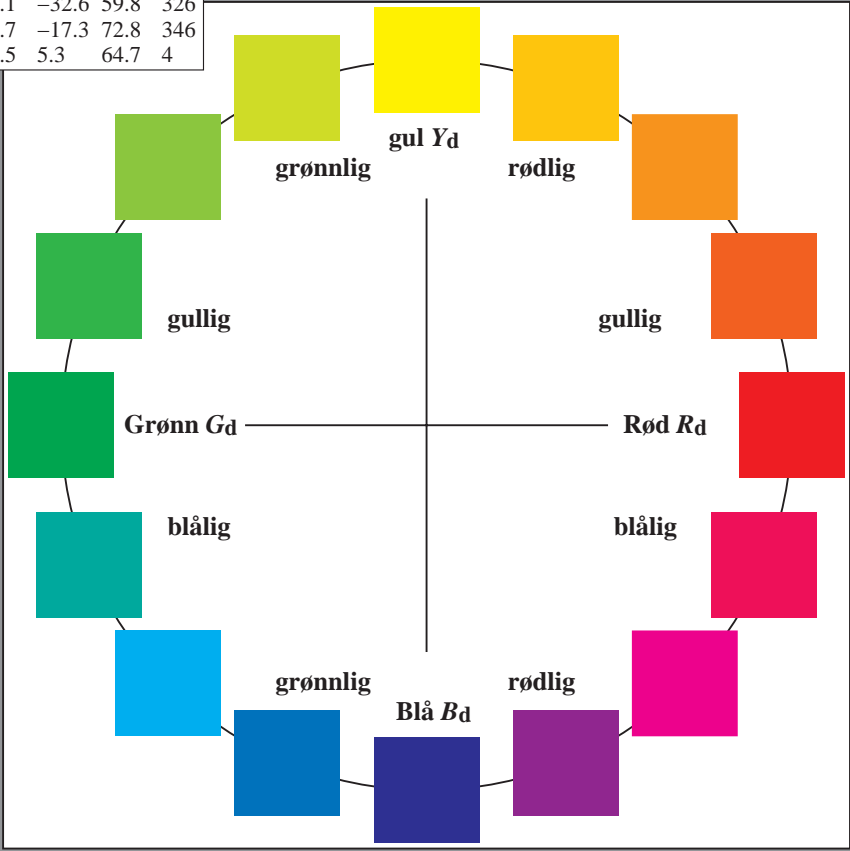
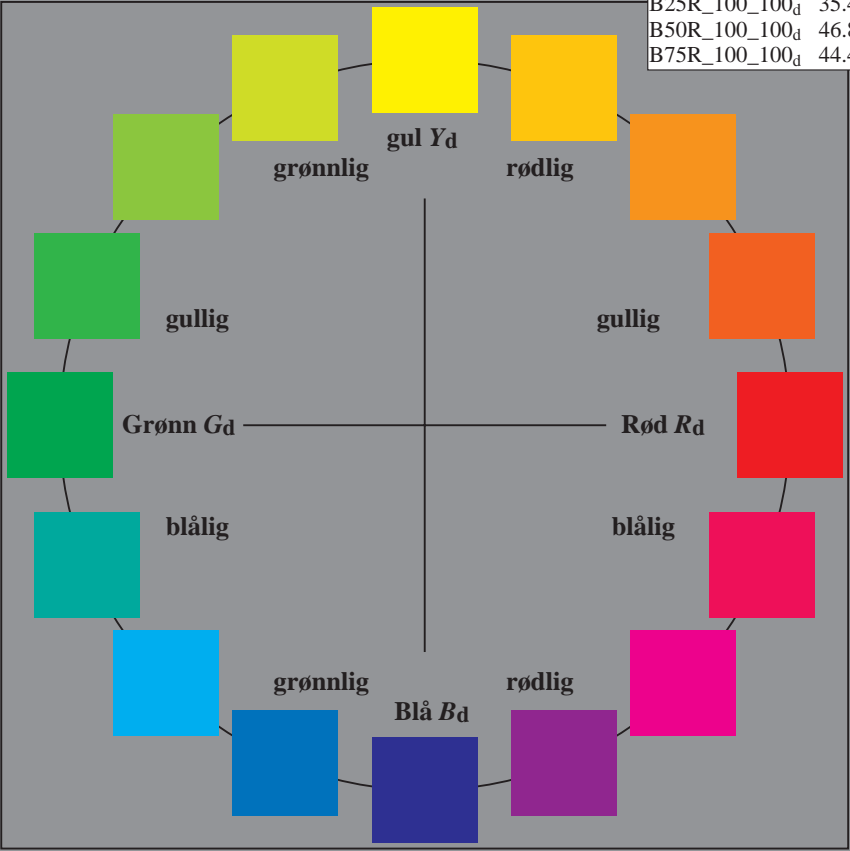
HIC^*_d
 fargetonetekst for fargene
 på denne siden:
 $H^*_d = R00Y_d, R25Y_d, \dots, B75R_d$

LRS18a; adapterte (a) CIELAB data					
H^*_d	$L^*=L^*_a$	a^*_a	b^*_a	$C^*_{ab,a}$	$h^*_{ab,a}$
R00Y_100_100_d	45.9	61.7	29.3	68.3	25
R25Y_100_100_d	57.6	45.4	48.7	66.6	47
R50Y_100_100_d	69.5	24.3	57.8	62.8	67
R75Y_100_100_d	81.1	5.7	61.4	61.7	84
Y00G_100_100_d	89.4	-7.1	66.3	66.7	96
Y25G_100_100_d	88.3	-14.2	73.9	75.3	100
Y50G_100_100_d	72.6	-32.8	51.9	61.5	122
Y75G_100_100_d	60.9	-49.3	34.9	60.4	144
G00B_100_100_d	54.1	-59.5	24.4	64.3	157
G25B_100_100_d	55.4	-44.3	-11.3	45.7	194
G50B_100_100_d	52.1	-22.8	-47.0	52.2	244
G75B_100_100_d	45.3	-5.0	-54.6	54.9	264
B00R_100_100_d	32.3	25.6	-44.5	51.4	299
B25R_100_100_d	35.4	50.1	-32.6	59.8	326
B50R_100_100_d	46.8	70.7	-17.3	72.8	346
B75R_100_100_d	44.4	64.5	5.3	64.7	4



%Omfang
 $u^*_{rel} = 114$
 %Regularitet
 $g^*_{H,rel} = 28$
 $g^*_{C,rel} = 38$

LRS18a; adapterte (a) CIELAB data					
navn	$L^*=L^*_a$	a^*_a	b^*_a	$C^*_{ab,a}$	$h^*_{ab,a}$
R _{d, Ma}	45.9	61.7	29.3	68.3	25
Y _{d, Ma}	89.4	-7.1	66.3	66.7	96
G _{d, Ma}	54.1	-59.5	24.4	64.3	157
C _{d, Ma}	52.1	-22.8	-47.0	52.2	244
B _{d, Ma}	32.3	25.6	-44.5	51.4	299
M _{d, Ma}	46.8	70.7	-17.3	72.8	346
N _{d, Ma}	20.0	0.0	0.0	0.0	0
W _{d, Ma}	94.2	0.0	0.0	0.0	0
R _{d, CIE}	39.9	58.7	27.9	65.0	25
Y _{d, CIE}	81.2	-2.8	71.5	71.6	92
G _{d, CIE}	52.2	-42.4	13.6	44.5	162
B _{d, CIE}	30.5	1.4	-46.4	46.4	271



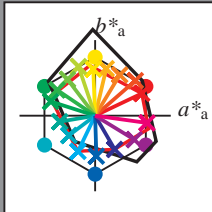
Input og output: Laserer-Reflektiv-System LRS18a

Data for ethvert apparat (d) eller elementærfarge (e):

HIC^*_e
 fargetonetekst for fargene
 på denne siden:
 $H^*_e = R00Y_e, R25Y_e, \dots, B75R_e$

LRS18a; adapterte (a) CIELAB data

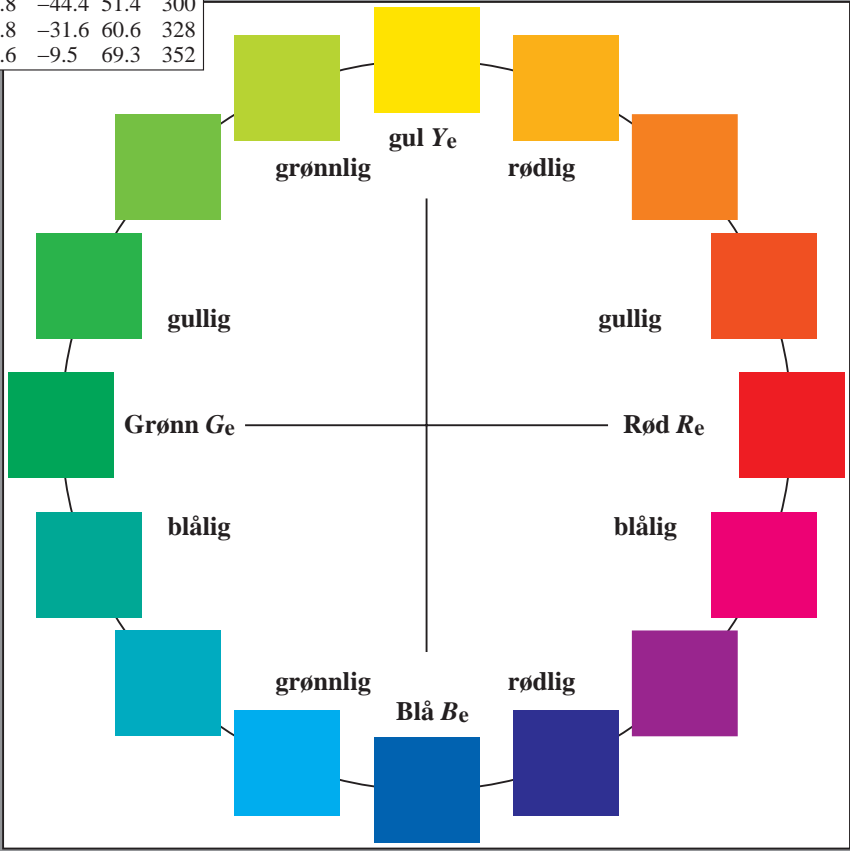
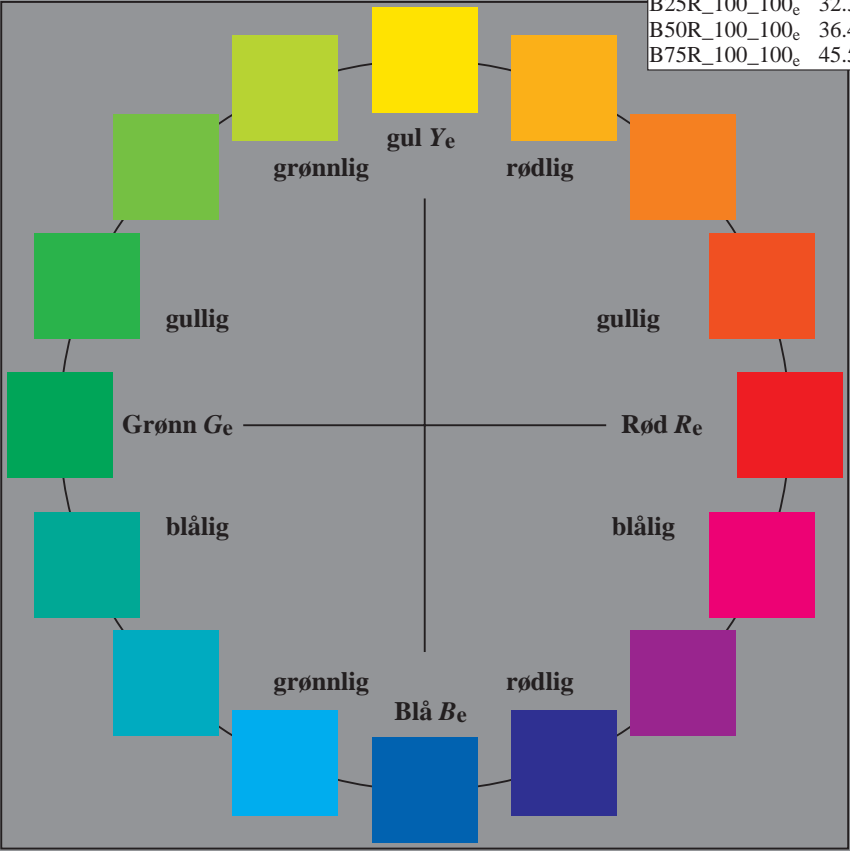
H^*_e	$L^*=L^*_a$	a^*_a	b^*_a	$C^*_{ab,a}$	$h^*_{ab,a}$
R00Y_100_100_e	45.9	61.7	29.4	68.4	25
R25Y_100_100_e	53.7	53.2	46.3	70.6	41
R50Y_100_100_e	64.9	32.5	53.9	63.0	58
R75Y_100_100_e	75.4	14.6	62.1	63.9	76
Y00G_100_100_e	86.8	-2.4	61.6	61.6	92
Y25G_100_100_e	82.1	-21.8	64.9	68.5	108
Y50G_100_100_e	69.6	-36.4	47.9	60.2	127
Y75G_100_100_e	60.3	-50.1	33.9	60.5	145
G00B_100_100_e	53.8	-58.7	18.8	61.6	162
G25B_100_100_e	55.0	-46.7	-7.9	47.4	189
G50B_100_100_e	56.0	-34.7	-26.1	43.4	216
G75B_100_100_e	52.0	-22.6	-47.2	52.4	244
B00R_100_100_e	40.0	1.6	-53.4	53.5	271
B25R_100_100_e	32.3	25.8	-44.4	51.4	300
B50R_100_100_e	36.4	51.8	-31.6	60.6	328
B75R_100_100_e	45.5	68.6	-9.5	69.3	352



%Omfang
 $u^*_{rel} = 114$
 %Regularitet
 $g^*_{H,rel} = 28$
 $g^*_{C,rel} = 38$

LRS18a; adapterte (a) CIELAB data

navn	$L^*=L^*_a$	a^*_a	b^*_a	$C^*_{ab,a}$	$h^*_{ab,a}$
R _e ,Ma	45.9	61.7	29.4	68.4	25
Y _e ,Ma	86.8	-2.4	61.6	61.6	92
G _e ,Ma	53.8	-58.7	18.8	61.6	162
C _e ,Ma	56.0	-34.7	-26.1	43.4	216
B _e ,Ma	40.0	1.6	-53.4	53.5	271
M _e ,Ma	36.4	51.8	-31.6	60.6	328
N _e ,Ma	20.0	0.0	0.0	0.0	0
W _e ,Ma	94.2	0.0	0.0	0.0	0
R _e ,CIE	39.9	58.7	27.9	65.0	25
Y _e ,CIE	81.2	-2.8	71.5	71.6	92
G _e ,CIE	52.2	-42.4	13.6	44.5	162
B _e ,CIE	30.5	1.4	-46.4	46.4	271

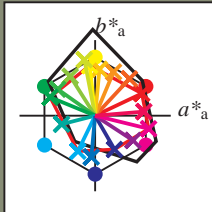


Input og output: Laserer-Reflektiv-System LRS18a

Data for ethvert apparat (d) eller elementærfarge (e):

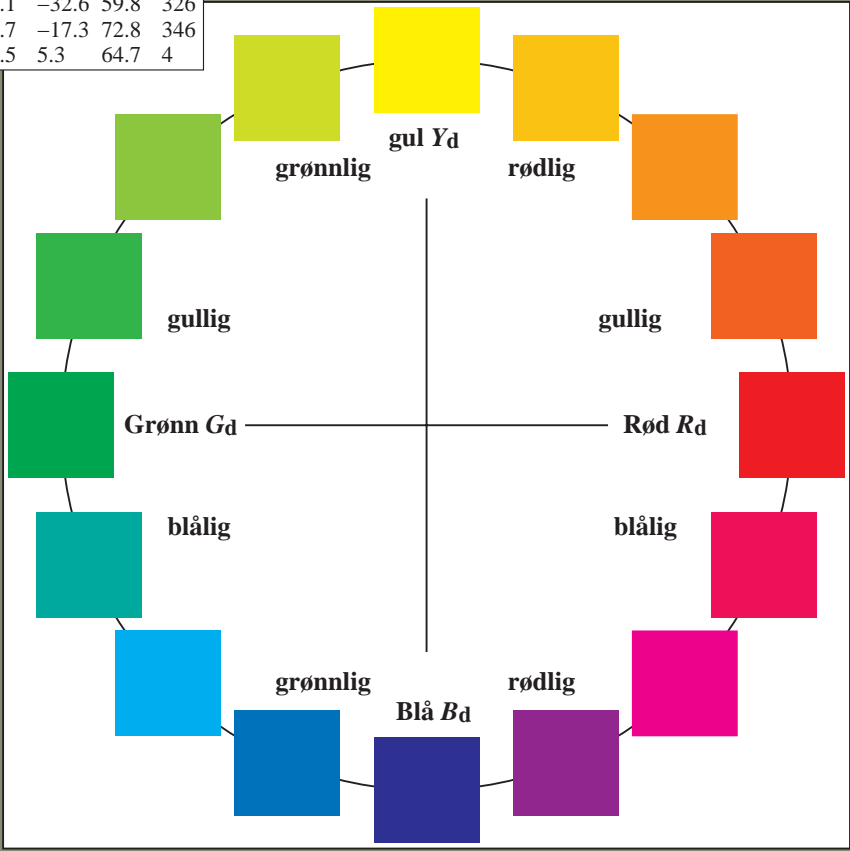
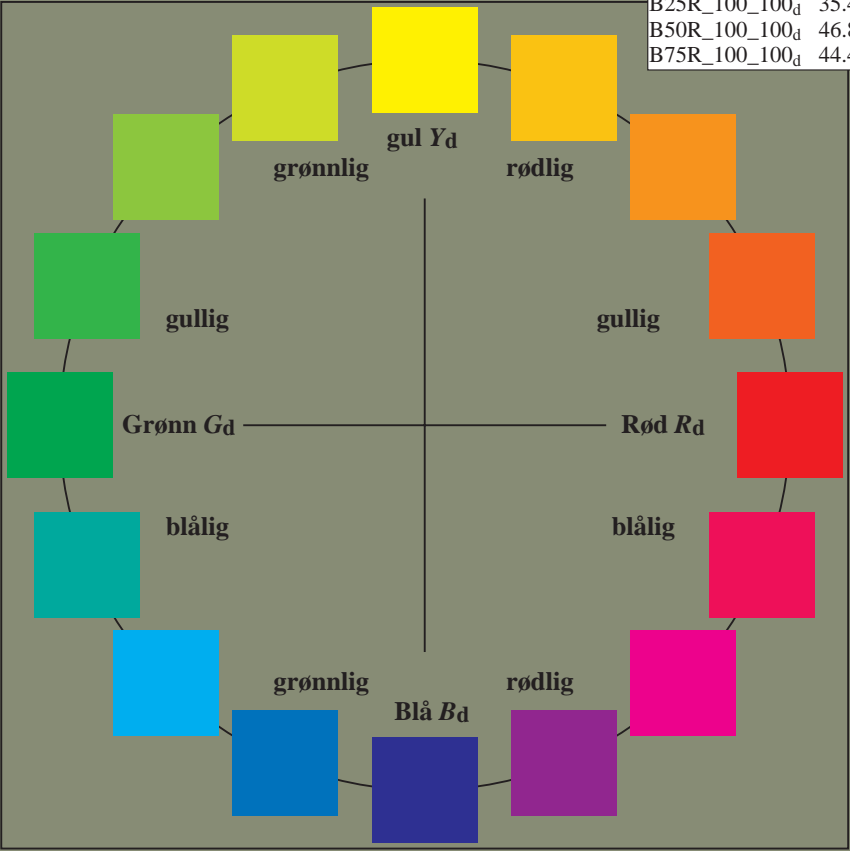
HIC^*_d
 fargetonetekst for fargene på denne siden:
 $H^*_d = R00Y_d, R25Y_d, \dots, B75R_d$

LRS18a; adapterte (a) CIELAB data					
H^*_d	$L^*=L^*_a$	a^*_a	b^*_a	$C^*_{ab,a}$	$h^*_{ab,a}$
R00Y_100_100 _d	45.9	61.7	29.3	68.3	25
R25Y_100_100 _d	57.6	45.4	48.7	66.6	47
R50Y_100_100 _d	69.5	24.3	57.8	62.8	67
R75Y_100_100 _d	81.1	5.7	61.4	61.7	84
Y00G_100_100 _d	89.4	-7.1	66.3	66.7	96
Y25G_100_100 _d	88.3	-14.2	73.9	75.3	100
Y50G_100_100 _d	72.6	-32.8	51.9	61.5	122
Y75G_100_100 _d	60.9	-49.3	34.9	60.4	144
G00B_100_100 _d	54.1	-59.5	24.4	64.3	157
G25B_100_100 _d	55.4	-44.3	-11.3	45.7	194
G50B_100_100 _d	52.1	-22.8	-47.0	52.2	244
G75B_100_100 _d	45.3	-5.0	-54.6	54.9	264
B00R_100_100 _d	32.3	25.6	-44.5	51.4	299
B25R_100_100 _d	35.4	50.1	-32.6	59.8	326
B50R_100_100 _d	46.8	70.7	-17.3	72.8	346
B75R_100_100 _d	44.4	64.5	5.3	64.7	4



%Omfang
 $u^*_{rel} = 114$
 %Regularitet
 $g^*_{H,rel} = 28$
 $g^*_{C,rel} = 38$

LRS18a; adapterte (a) CIELAB data					
navn	$L^*=L^*_a$	a^*_a	b^*_a	$C^*_{ab,a}$	$h^*_{ab,a}$
R _{d,Ma}	45.9	61.7	29.3	68.3	25
Y _{d,Ma}	89.4	-7.1	66.3	66.7	96
G _{d,Ma}	54.1	-59.5	24.4	64.3	157
C _{d,Ma}	52.1	-22.8	-47.0	52.2	244
B _{d,Ma}	32.3	25.6	-44.5	51.4	299
M _{d,Ma}	46.8	70.7	-17.3	72.8	346
N _{d,Ma}	20.0	0.0	0.0	0.0	0
W _{d,Ma}	94.2	0.0	0.0	0.0	0
R _{d,CIE}	39.9	58.7	27.9	65.0	25
Y _{d,CIE}	81.2	-2.8	71.5	71.6	92
G _{d,CIE}	52.2	-42.4	13.6	44.5	162
B _{d,CIE}	30.5	1.4	-46.4	46.4	271

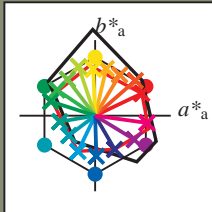


Input og output: Laserer-Reflektiv-System LRS18a

Data for ethvert apparat (d) eller elementærfarge (e):

HIC^*_e
 fargetonetekst for fargene på denne siden:
 $H^*_e = R00Y_e, R25Y_e, \dots, B75R_e$

LRS18a; adapterte (a) CIELAB data					
H^*_e	$L^*=L^*_a$	a^*_a	b^*_a	$C^*_{ab,a}$	$h^*_{ab,a}$
R00Y_100_100 _e	45.9	61.7	29.4	68.4	25
R25Y_100_100 _e	53.7	53.2	46.3	70.6	41
R50Y_100_100 _e	64.9	32.5	53.9	63.0	58
R75Y_100_100 _e	75.4	14.6	62.1	63.9	76
Y00G_100_100 _e	86.8	-2.4	61.6	61.6	92
Y25G_100_100 _e	82.1	-21.8	64.9	68.5	108
Y50G_100_100 _e	69.6	-36.4	47.9	60.2	127
Y75G_100_100 _e	60.3	-50.1	33.9	60.5	145
G00B_100_100 _e	53.8	-58.7	18.8	61.6	162
G25B_100_100 _e	55.0	-46.7	-7.9	47.4	189
G50B_100_100 _e	56.0	-34.7	-26.1	43.4	216
G75B_100_100 _e	52.0	-22.6	-47.2	52.4	244
B00R_100_100 _e	40.0	1.6	-53.4	53.5	271
B25R_100_100 _e	32.3	25.8	-44.4	51.4	300
B50R_100_100 _e	36.4	51.8	-31.6	60.6	328
B75R_100_100 _e	45.5	68.6	-9.5	69.3	352



%Omfang
 $u^*_{rel} = 114$
 %Regularitet
 $g^*_{H,rel} = 28$
 $g^*_{C,rel} = 38$

LRS18a; adapterte (a) CIELAB data					
navn	$L^*=L^*_a$	a^*_a	b^*_a	$C^*_{ab,a}$	$h^*_{ab,a}$
R _e ,Ma	45.9	61.7	29.4	68.4	25
Y _e ,Ma	86.8	-2.4	61.6	61.6	92
G _e ,Ma	53.8	-58.7	18.8	61.6	162
C _e ,Ma	56.0	-34.7	-26.1	43.4	216
B _e ,Ma	40.0	1.6	-53.4	53.5	271
M _e ,Ma	36.4	51.8	-31.6	60.6	328
N _e ,Ma	20.0	0.0	0.0	0.0	0
W _e ,Ma	94.2	0.0	0.0	0.0	0
R _e ,CIE	39.9	58.7	27.9	65.0	25
Y _e ,CIE	81.2	-2.8	71.5	71.6	92
G _e ,CIE	52.2	-42.4	13.6	44.5	162
B _e ,CIE	30.5	1.4	-46.4	46.4	271

