

Input og output: Laserer-Reflektiv-System LRS18a

Data for ethvert apparat (d) eller elementærfarge (e):

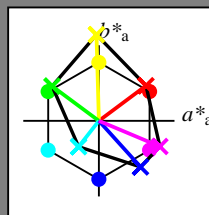
HIC^*_-

fargetonetekst for fargene på denne siden:

H^*_- = R00Y_, R25Y_, ..., B75R_

ORS20a; adapterte (a) CIELAB data

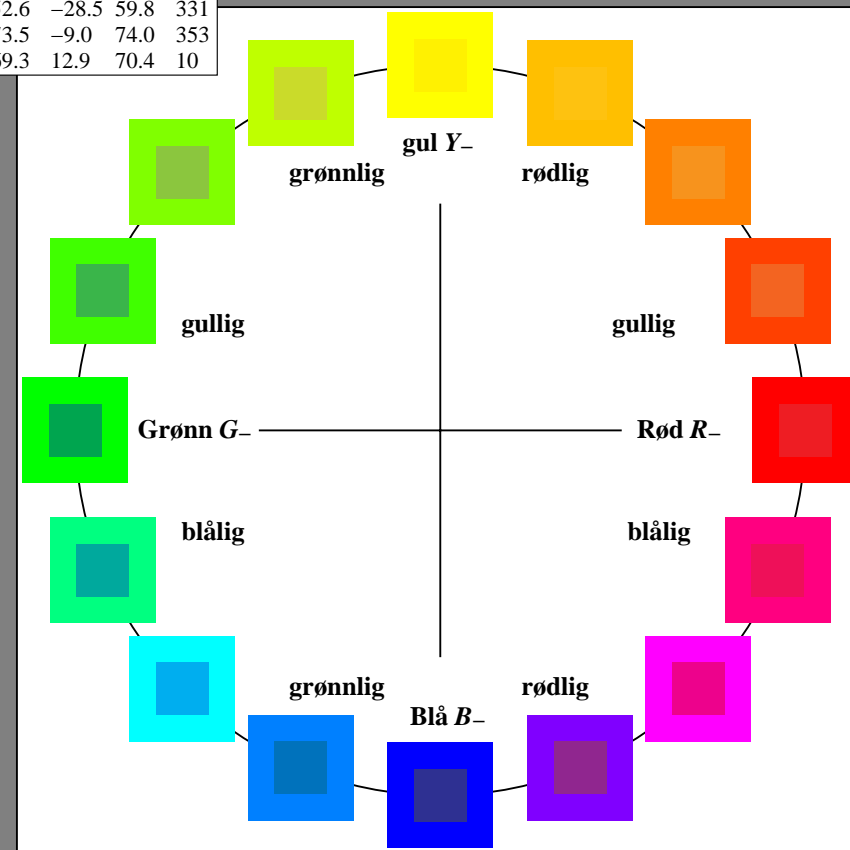
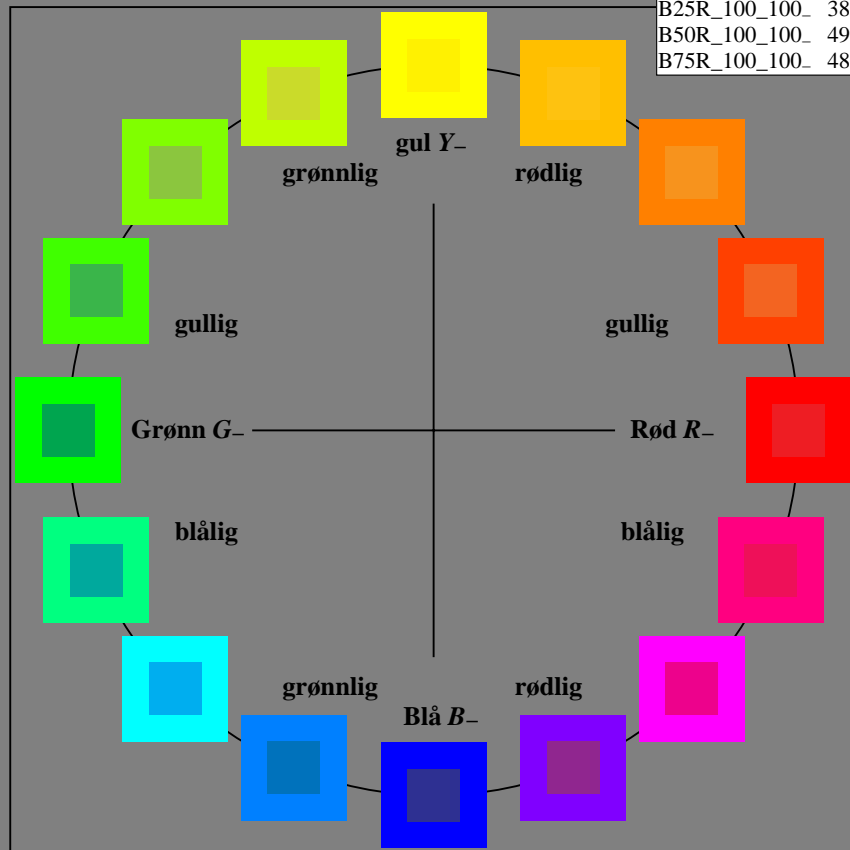
H^*_-	$L^*=L^*_a a^*_a$	b^*_a	$C^*_{ab,a}$	$h^*_{ab,a}$
R00Y_100_100_	48.4	66.1	40.2	77.3
R25Y_100_100_	56.8	48.0	50.5	69.6
R50Y_100_100_	68.6	25.0	63.9	68.6
R75Y_100_100_	80.6	4.8	77.2	77.3
Y00G_100_100_	90.2	-9.6	88.2	88.9
Y25G_100_100_	83.2	-18.4	79.9	81.9
Y50G_100_100_	73.3	-31.7	62.7	70.2
Y75G_100_100_	62.0	-49.7	43.2	65.8
G00B_100_100_	55.8	-65.2	33.8	73.4
G25B_100_100_	59.3	-50.3	-9.0	51.0
G50B_100_100_	63.0	-30.5	-42.0	51.9
G75B_100_100_	45.7	-5.7	-44.6	44.9
B00R_100_100_	27.5	25.9	-47.3	53.9
B25R_100_100_	38.3	52.6	-28.5	59.8
B50R_100_100_	49.5	73.5	-9.0	74.0
B75R_100_100_	48.9	69.3	12.9	70.4



%Omfang
 $u^*_{rel} = 114$
 %Regularitet
 $g^*_{H,rel} = 28$
 $g^*_{C,rel} = 38$

LRS18a; adapterte (a) CIELAB data

navn	$L^*=L^*_a a^*_a$	b^*_a	$C^*_{ab,a}$	$h^*_{ab,a}$
R_-,Ma	32.5	62.3	46.4	77.7
Y_-,Ma	82.7	-3.1	113.9	114.0
G_-,Ma	39.4	-61.8	45.8	76.9
C_-,Ma	47.8	-26.8	-34.2	43.4
B_-,Ma	10.1	55.1	-61.0	82.2
M_-,Ma	34.5	80.6	-33.9	87.5
N_-,Ma	6.2	0.0	0.0	0.0
W_-,Ma	91.9	0.0	0.0	0.0
R_-,CIE	39.9	58.7	27.9	65.0
Y_-,CIE	81.2	-2.8	71.5	71.6
G_-,CIE	52.2	-42.4	13.6	44.5
B_-,CIE	30.5	1.4	-46.4	46.4



se lignende filer: <http://130.149.60.45/~farbmetrik/RN86/RN86.HTM>
 teknisk informasjon: <http://www.ps.bam.de> eller <http://130.149.60.45/~farbmetrik>

TUB registrering: 20150701-RN86/RN86L0NA.TXT /.PS
 anvendelse for måling av laserprinter output

TUB-material: code=rh4ta

RN860-7N_RGB 5-003030-L0

TUB-prøveplansje RN86; 16-trinns fargetonesirkel, cf=1
 prøveplansje infølge DIN 33872

input: $rgb/cmyk \rightarrow rgb/cmyk$
 output: ingen endring

Input og output: Laserer-Reflektiv-System LRS18a

Data for ethvert apparat (d) eller elementærfarge (e):

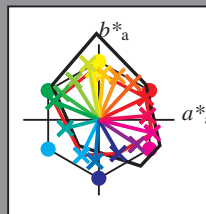
$$HIC^*_d$$

fargetonetekst for fargene på denne siden:

$$H^*_d = R00Y_d, R25Y_d, \dots, B75R_d$$

LRS18a; adapterte (a) CIELAB data

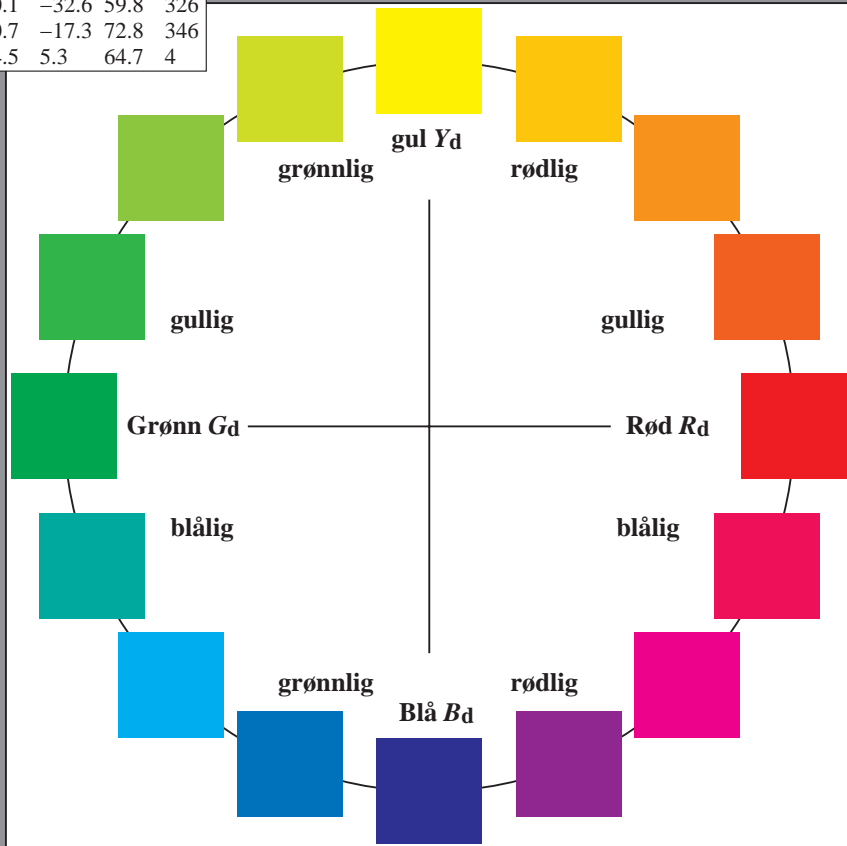
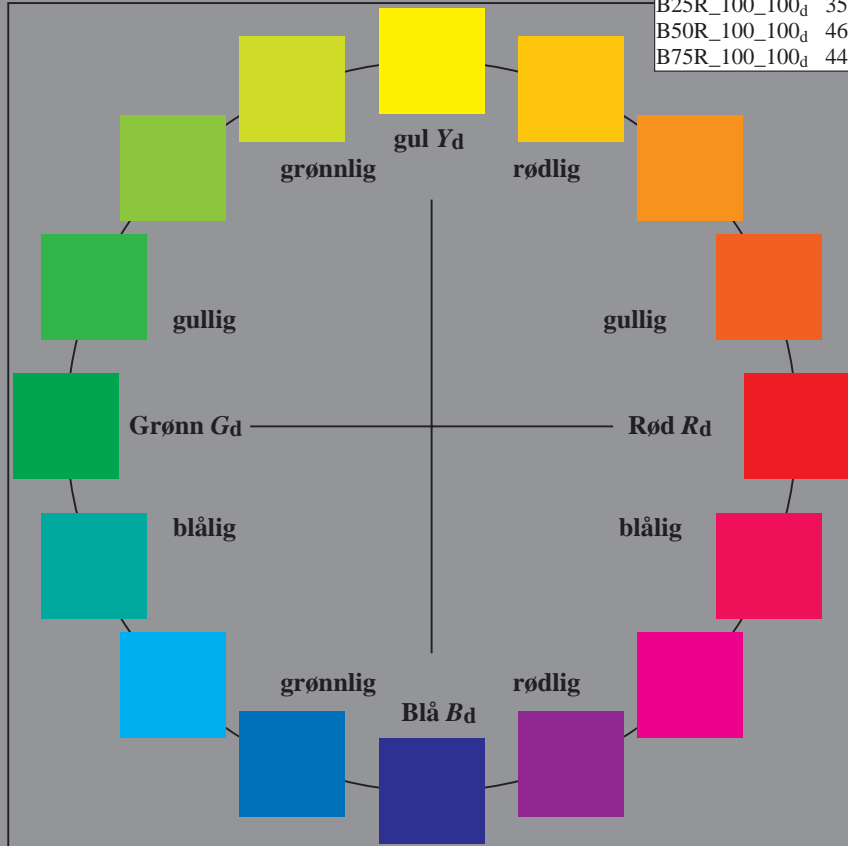
H^*_d	$L^*=L^*_a a^*_a$	b^*_a	$C^*_{ab,a}$	$h^*_{ab,a}$
R00Y_100_100_d	45.9	61.7	29.3	68.3
R25Y_100_100_d	57.6	45.4	48.7	66.6
R50Y_100_100_d	69.5	24.3	57.8	62.8
R75Y_100_100_d	81.1	5.7	61.4	61.7
Y00G_100_100_d	89.4	-7.1	66.3	66.7
Y25G_100_100_d	88.3	-14.2	73.9	75.3
Y50G_100_100_d	72.6	-32.8	51.9	61.5
Y75G_100_100_d	60.9	-49.3	34.9	60.4
G00B_100_100_d	54.1	-59.5	24.4	64.3
G25B_100_100_d	55.4	-44.3	-11.3	45.7
G50B_100_100_d	52.1	-22.8	-47.0	52.2
G75B_100_100_d	45.3	-5.0	-54.6	54.9
B00R_100_100_d	32.3	25.6	-44.5	51.4
B25R_100_100_d	35.4	50.1	-32.6	59.8
B50R_100_100_d	46.8	70.7	-17.3	72.8
B75R_100_100_d	44.4	64.5	5.3	64.7



%Omfang
 $u^*_{rel} = 114$
 %Regularitet
 $g^*_H,rel = 28$
 $g^*_C,rel = 38$

LRS18a; adapterte (a) CIELAB data

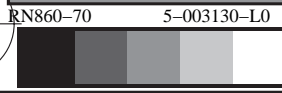
navn	$L^*=L^*_a a^*_a$	b^*_a	$C^*_{ab,a}$	$h^*_{ab,a}$
R _{d,Ma}	45.9	61.7	29.3	68.3
Y _{d,Ma}	89.4	-7.1	66.3	66.7
G _{d,Ma}	54.1	-59.5	24.4	64.3
C _{d,Ma}	52.1	-22.8	-47.0	52.2
B _{d,Ma}	32.3	25.6	-44.5	51.4
M _{d,Ma}	46.8	70.7	-17.3	72.8
N _{d,Ma}	20.0	0.0	0.0	0
W _{d,Ma}	94.2	0.0	0.0	0
R _{d,CIE}	39.9	58.7	27.9	65.0
Y _{d,CIE}	81.2	-2.8	71.5	71.6
G _{d,CIE}	52.2	-42.4	13.6	44.5
B _{d,CIE}	30.5	1.4	-46.4	46.4



se lignende filer: <http://130.149.60.45/~farbmetrik/RN86/RN86.HTM>
 teknisk informasjon: <http://www.ps.bam.de> eller <http://130.149.60.45/~farbmetrik>

TUB registrering: 20150701-RN86/RN86L0NA.TXT /.PS
 anvendelse for måling av laserprinter output, separasjon cmyk6 (CMYK)

TUB-material: code=rh4ta



Input og output: Laserer-Reflektiv-System LRS18a

Data for ethvert apparat (d) eller elementærfarge (e):

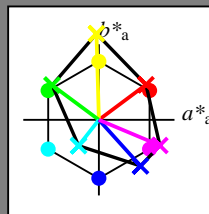
HIC^*

fargetonetekst for fargene på denne siden:

$H^*_e = R00Y_e, R25Y_e, \dots, B75R_e$

ORS20a; adapterte (a) CIELAB data

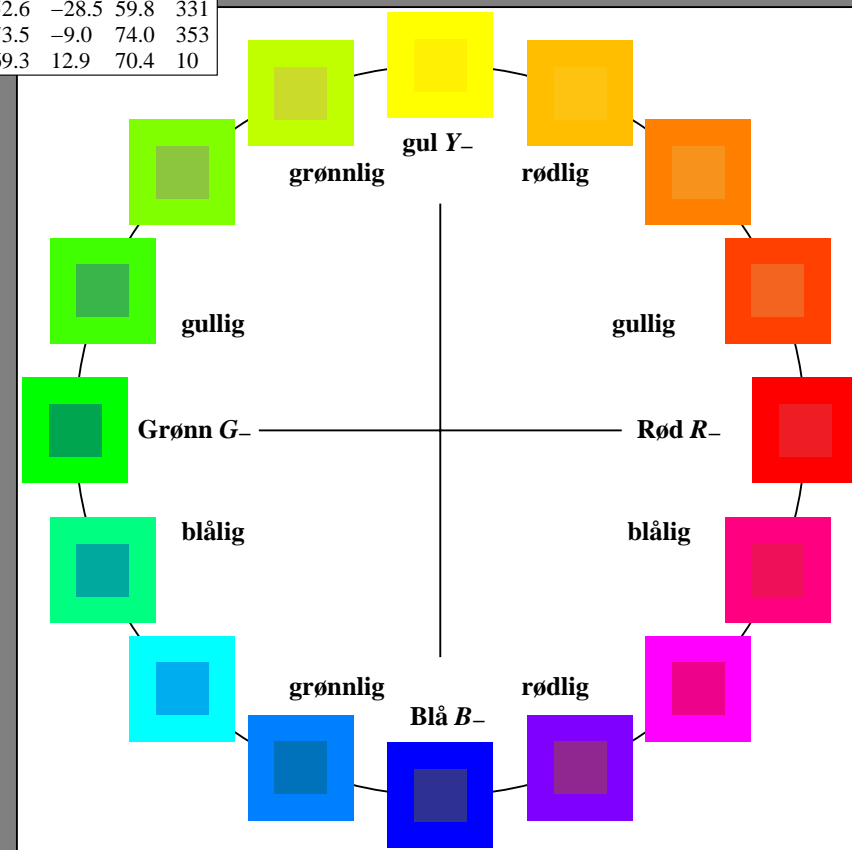
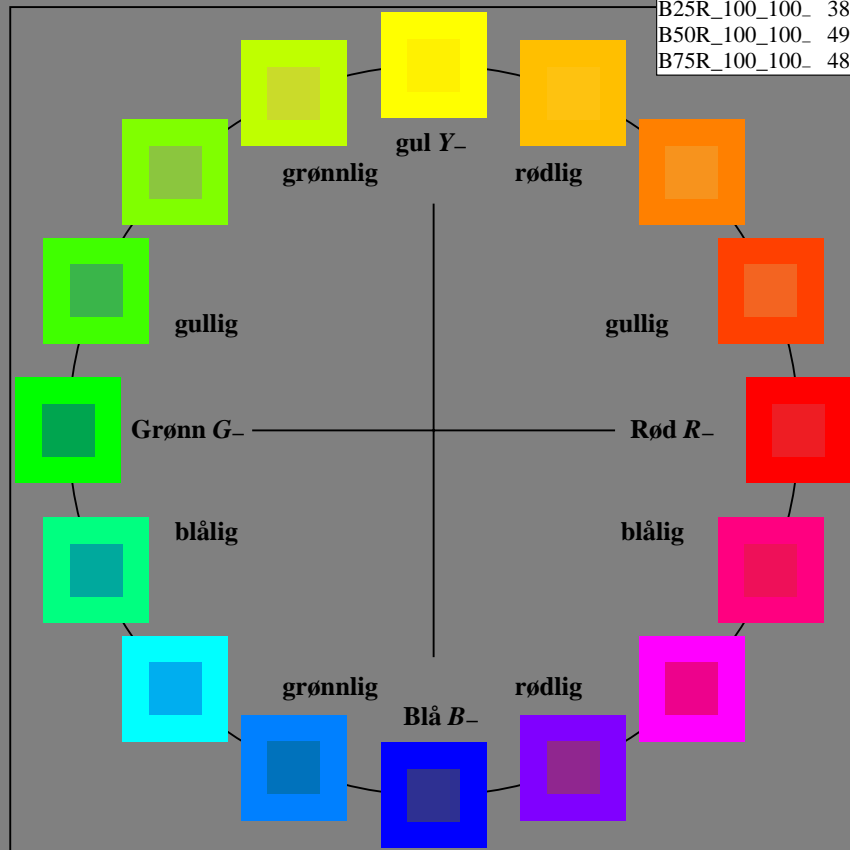
H^*_e	$L^*=L^*_a a^*_a$	b^*_a	$C^*_{ab,a}$	$h^*_{ab,a}$
R00Y_100_100_	48.4	66.1	40.2	77.3
R25Y_100_100_	56.8	48.0	50.5	69.6
R50Y_100_100_	68.6	25.0	63.9	68.6
R75Y_100_100_	80.6	4.8	77.2	77.3
Y00G_100_100_	90.2	-9.6	88.2	88.9
Y25G_100_100_	83.2	-18.4	79.9	81.9
Y50G_100_100_	73.3	-31.7	62.7	70.2
Y75G_100_100_	62.0	-49.7	43.2	65.8
G00B_100_100_	55.8	-65.2	33.8	73.4
G25B_100_100_	59.3	-50.3	9.0	51.0
G50B_100_100_	63.0	-30.5	-42.0	51.9
G75B_100_100_	45.7	-5.7	-44.6	44.9
B00R_100_100_	27.5	25.9	-47.3	53.9
B25R_100_100_	38.3	52.6	-28.5	59.8
B50R_100_100_	49.5	73.5	-9.0	74.0
B75R_100_100_	48.9	69.3	12.9	70.4



%Omfang
 $u^*_{rel} = 114$
 %Regularitet
 $g^*_{H,rel} = 28$
 $g^*_{C,rel} = 38$

LRS18a; adapterte (a) CIELAB data

navn	$L^*=L^*_a a^*_a$	b^*_a	$C^*_{ab,a}$	$h^*_{ab,a}$
R_.,Ma	32.5	62.3	46.4	77.7
Y_.,Ma	82.7	-3.1	113.9	114.0
G_.,Ma	39.4	-61.8	45.8	76.9
C_.,Ma	47.8	-26.8	-34.2	43.4
B_.,Ma	10.1	55.1	-61.0	82.2
M_.,Ma	34.5	80.6	-33.9	87.5
N_.,Ma	6.2	0.0	0.0	0.0
W_.,Ma	91.9	0.0	0.0	0.0
R_.,CIE	39.9	58.7	27.9	65.0
Y_.,CIE	81.2	-2.8	71.5	71.6
G_.,CIE	52.2	-42.4	13.6	44.5
B_.,CIE	30.5	1.4	-46.4	46.4



se lignende filer: http://130.149.60.45/~farbmetrik/RN86/RN86.HTM
 teknisk informasjon: http://www.ps.bam.de eller http://130.149.60.45/~farbmetrik

TUB registrering: 20150701-RN86/RN86L0NA.TXT /.PS
 anvendelse for måling av laserprinter output

TUB-material: code=rh4ta

RN860-7N_RGB 5-013030-L0

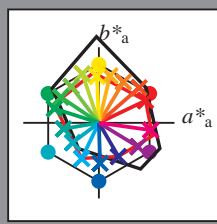
TUB-prøveplansje RN86; 16-trinns fargetonesirkel, cf=1
 prøveplansje infølge DIN 33872

input: $rgb/cmyk \rightarrow rgb/cmyk$
 output: ingen endring

Input og output: Laserer-Reflektiv-System LRS18a

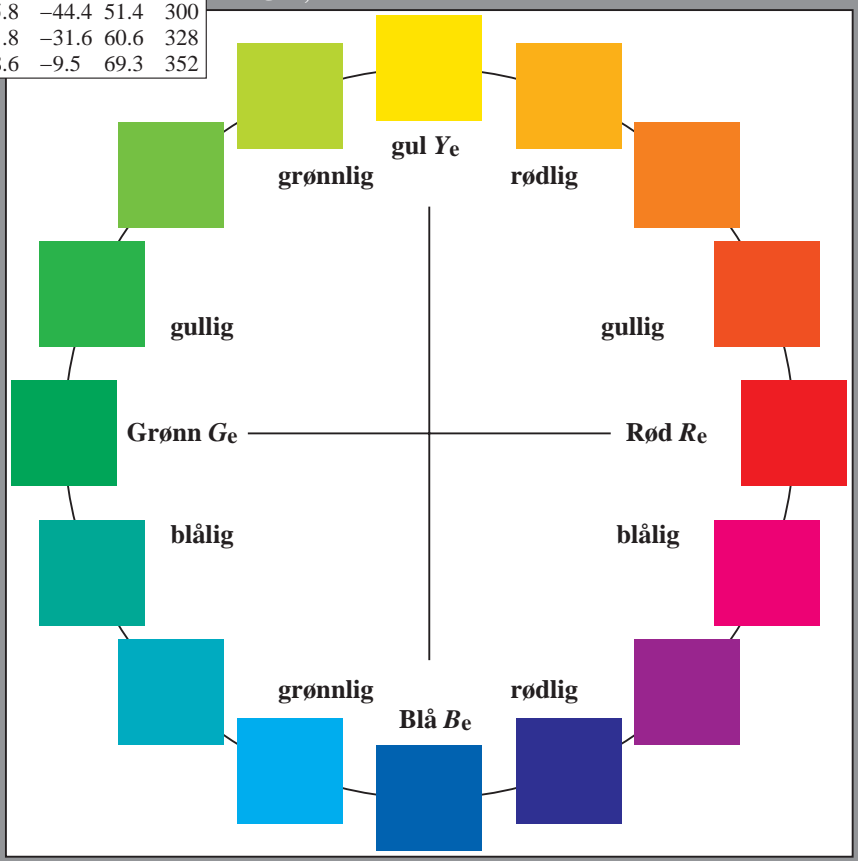
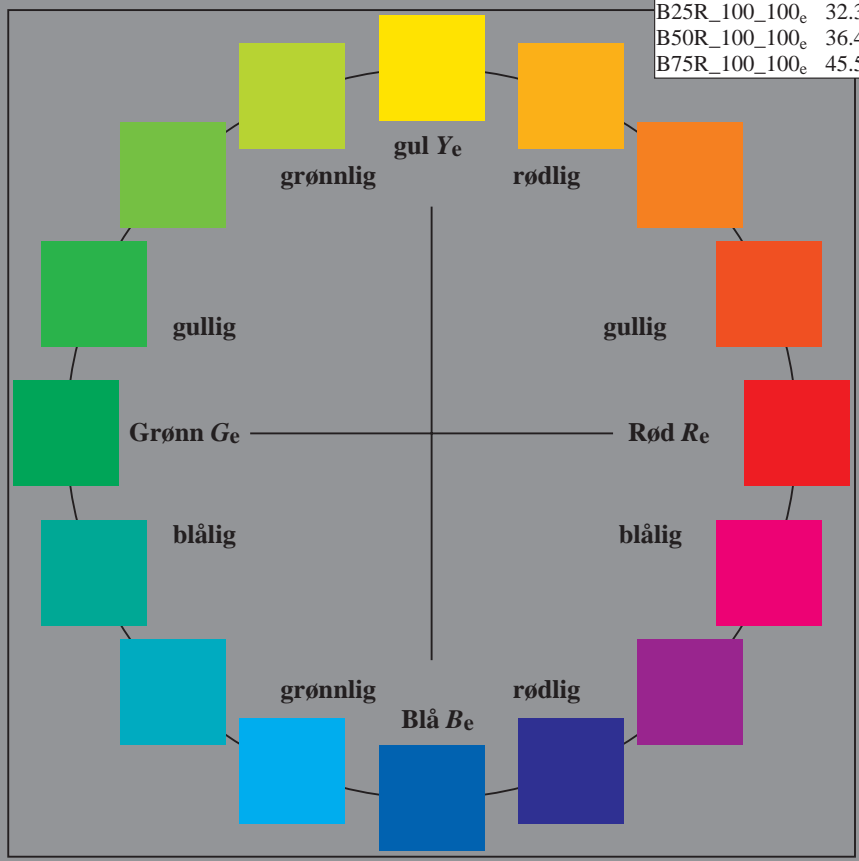
Data for ethvert apparat (d) eller elementærfarge (e):
 HIC^*_e
fargetonetekst for fargene på denne siden:
 $H^*_e = R00Y_e, R25Y_e, \dots, B75R_e$

LRS18a; adapterte (a) CIELAB data					
H^*_e	$L^*=L^*_a a^*_a$	b^*_a	$C^*_{ab,a}$	$h^*_{ab,a}$	
R00Y_100_100_e	45.9	61.7	29.4	68.4	25
R25Y_100_100_e	53.7	53.2	46.3	70.6	41
R50Y_100_100_e	64.9	32.5	53.9	63.0	58
R75Y_100_100_e	75.4	14.6	62.1	63.9	76
Y00G_100_100_e	86.8	-2.4	61.6	61.6	92
Y25G_100_100_e	82.1	-21.8	64.9	68.5	108
Y50G_100_100_e	69.6	-36.4	47.9	60.2	127
Y75G_100_100_e	60.3	-50.1	33.9	60.5	145
G00B_100_100_e	53.8	-58.7	18.8	61.6	162
G25B_100_100_e	55.0	-46.7	-7.9	47.4	189
G50B_100_100_e	56.0	-34.7	-26.1	43.4	216
G75B_100_100_e	52.0	-22.6	-47.2	52.4	244
B00R_100_100_e	40.0	1.6	-53.4	53.5	271
B25R_100_100_e	32.3	25.8	-44.4	51.4	300
B50R_100_100_e	36.4	51.8	-31.6	60.6	328
B75R_100_100_e	45.5	68.6	-9.5	69.3	352



%Omfang
 $u^*_{rel} = 114$
%Regularitet
 $g^*_{H,rel} = 28$
 $g^*_{C,rel} = 38$

LRS18a; adapterte (a) CIELAB data					
navn	$L^*=L^*_a a^*_a$	b^*_a	$C^*_{ab,a}$	$h^*_{ab,a}$	
$R_{e, Ma}$	45.9	61.7	29.4	68.4	25
$Y_{e, Ma}$	86.8	-2.4	61.6	61.6	92
$G_{e, Ma}$	53.8	-58.7	18.8	61.6	162
$C_{e, Ma}$	56.0	-34.7	-26.1	43.4	216
$B_{e, Ma}$	40.0	1.6	-53.4	53.5	271
$M_{e, Ma}$	36.4	51.8	-31.6	60.6	328
$N_{e, Ma}$	20.0	0.0	0.0	0.0	0
$W_{e, Ma}$	94.2	0.0	0.0	0.0	0
$R_{e, CIE}$	39.9	58.7	27.9	65.0	25
$Y_{e, CIE}$	81.2	-2.8	71.5	71.6	92
$G_{e, CIE}$	52.2	-42.4	13.6	44.5	162
$B_{e, CIE}$	30.5	1.4	-46.4	46.4	271



se liggende filer: <http://130.149.60.45/~farbmetrik/RN86/RN86LONA.TXT> /.PS
teknisk informasjon: <http://www.ps.bam.de> eller <http://130.149.60.45/~farbmetrik>

TUB registrering: 20150701-RN86/RN86LONA.TXT /.PS
anvendelse for måling av laserprinter output, separasjon cmyk6 (CMYK)
TUB-material: code=rh4ta