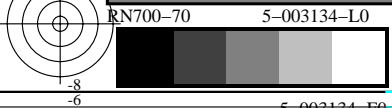
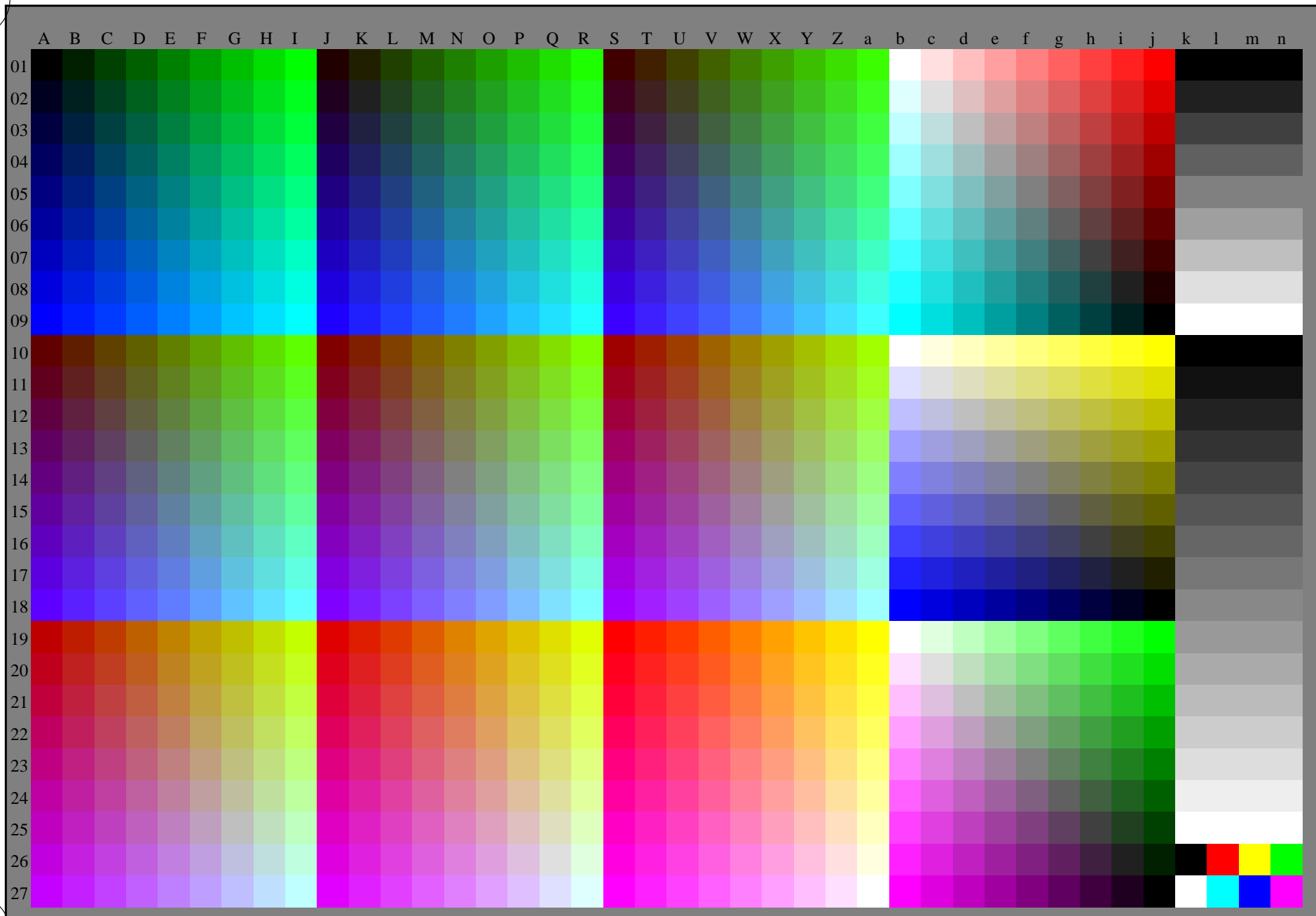




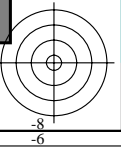
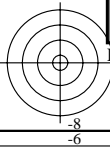
se lignende filer: <http://130.149.60.45/~farbmetrik/RN70/RN70L0NA.TXT> / .PS  
teknisk informasjon: <http://www.ps.bam.de> eller <http://130.149.60.45/~farbmetrik>

TUB registrering: 20150701-RN70/RN70L0NA.TXT /.PS TUB-material: code=rh4ta  
anvendelse for måling av laserprinter output, ingen separasjon rgb (RGB)



TUB-prøveplansje RN70; 1080 standard farger,  $cf=0,9$   
prøveplansje infølge DIN 33872, 3D=0,  $de=0$ ,  $rgb$

input:  $rgb/cmyk \rightarrow rgb_d$   
output: overføring til  $rgb_d$



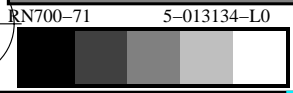
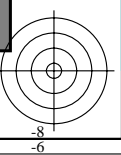
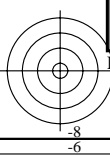
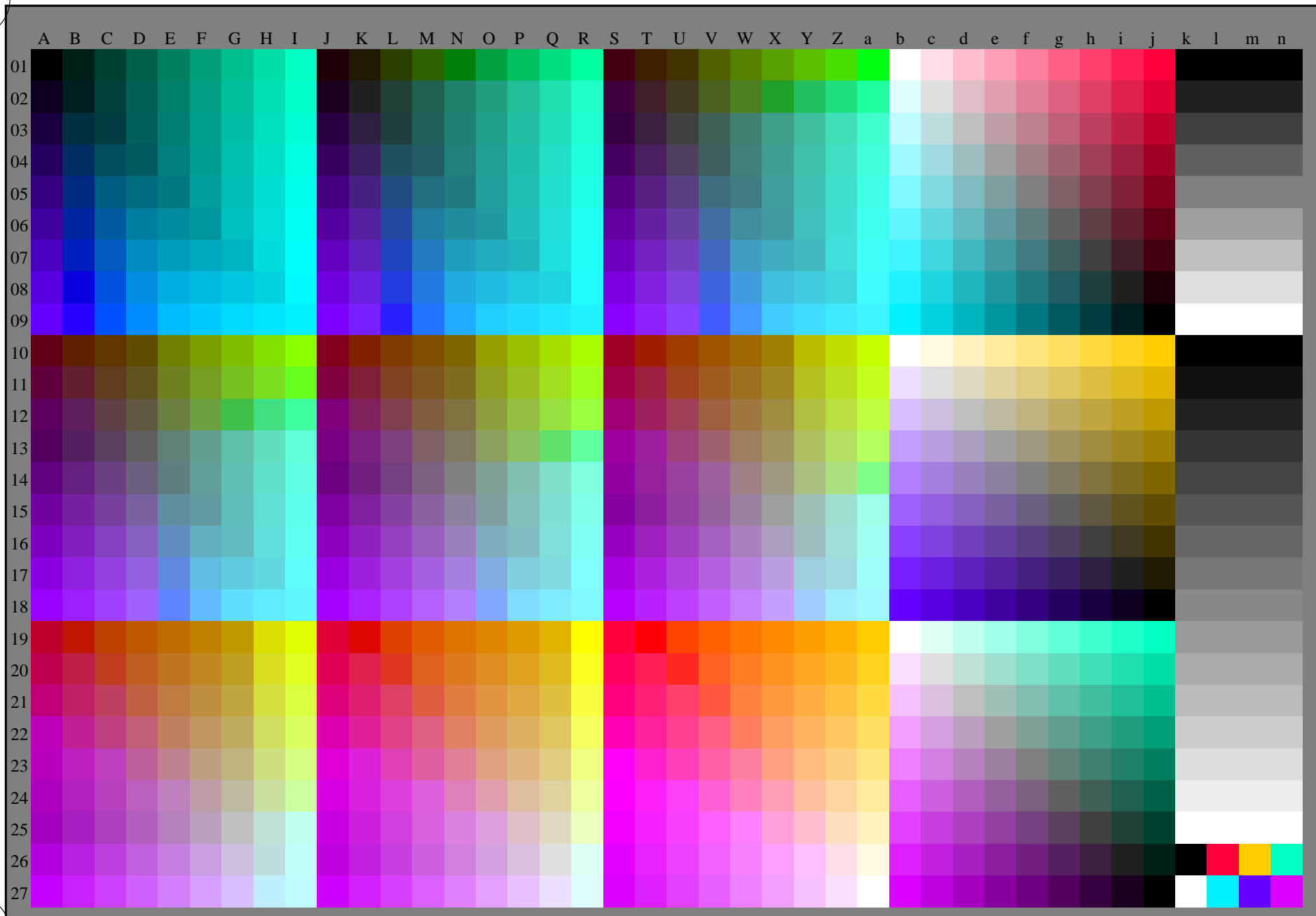


http://130.149.60.45/~farbmetrik/RN70/RN70L0NA.TXT /.PS; overføring output  
N: ingen 3D-linearisering (OL) i fil (F) eller PS-startup (S), side 2/2



se lignende filer: <http://130.149.60.45/~farbmetrik/RN70/RN70.HTM>  
teknisk informasjon: <http://www.ps.bam.de> eller <http://130.149.60.45/~farbmetrik>

TUB registrering: 20150701-RN70/RN70L0NA.TXT /.PS TUB-material: code=rh4ta  
anvendelse for måling av laserprinter output, ingen separasjon rgb (RGB)



TUB-prøveplansje RN70; 1080 standard farger,  $cf=0,9$   
prøveplansje infølge DIN 33872, 3D=0,  $de=1$ ,  $rgb$

input:  $rgb/cmyk \rightarrow rgb_e$   
output: overføring til  $rgb_e$

