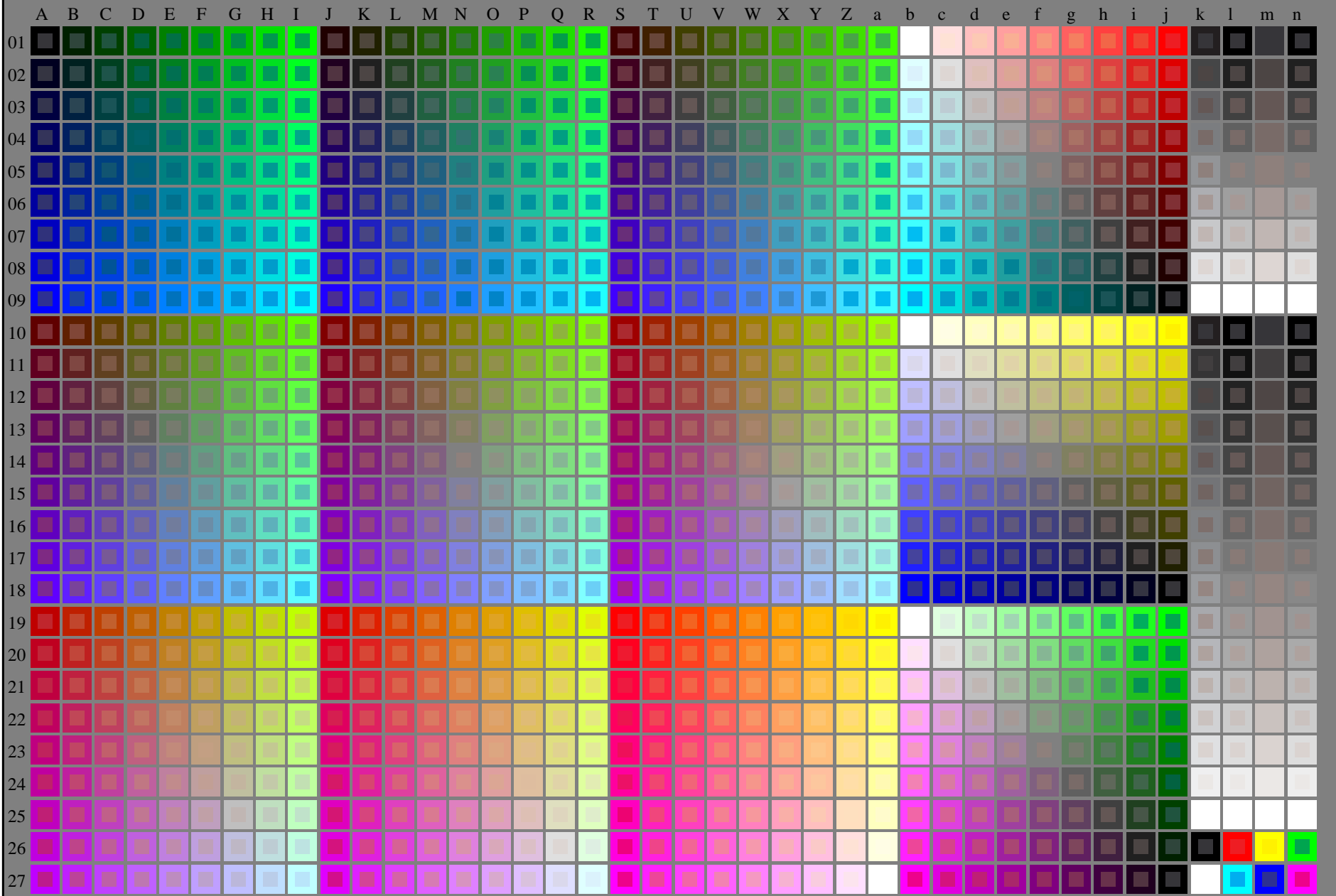


http://130.149.60.45/~farbmetrik/RN70/RN70L0FA.TXT /.PS; start output  
F: 3D-linearisering RN70/RN70LJ30FA.DAT i fil (F), side 1/2

se lignende filer: <http://130.149.60.45/~farbmetrik/RN70/RN70.HTM>  
teknisk informasjon: <http://www.ps.bam.de> eller <http://130.149.60.45/~farbmetrik>

TUB registrering: 20150701-RN70/RN70L0FA.TXT /.PS  
anvendelse for måling av laserprinter output

TUB-material: code=rh4ta



RN700-7N\_RGB 5-103034-L0

rgb (A\_j + k26\_n27), 000n (k), w (l), nnn0 (m), www (n), 3D = 1

TUB-prøveplansje RN70; 1080 standard farger, cf=0,9  
prøveplansje infølge DIN 33872

input: *rgb/cmyk* -> *rgb/cmyk*  
output: ingen endring

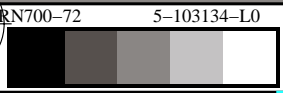
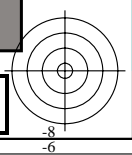
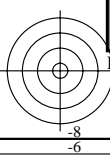
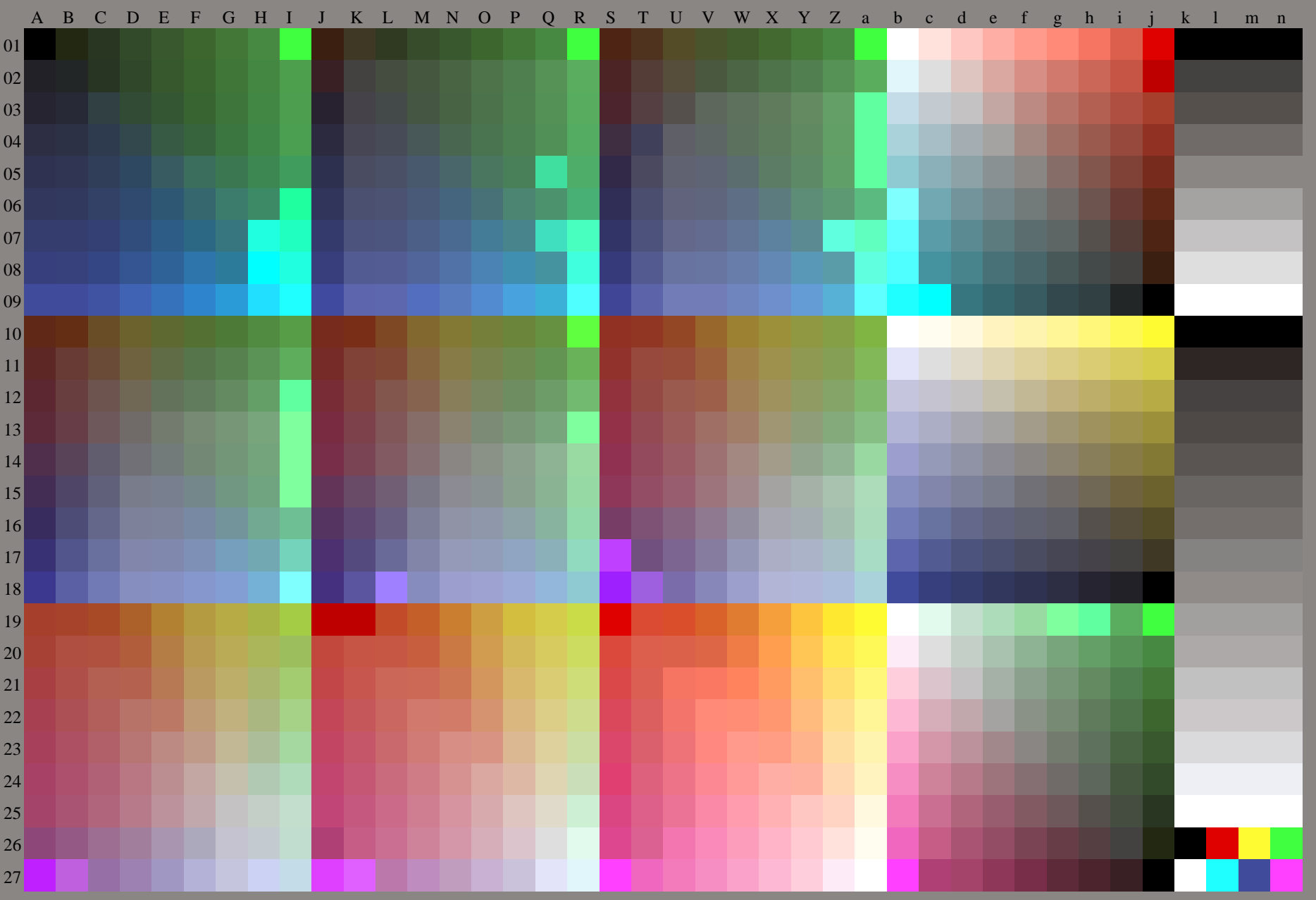
C M Y O L V

C M Y O L V



se lignende filer: <http://130.149.60.45/~farbmetrik/RN70/RN70L0FA.TXT> / .PS  
teknisk informasjon: <http://www.ps.bam.de> eller <http://130.149.60.45/~farbmetrik>

TUB registrering: 20150701-RN70/RN70L0FA.TXT /.PS  
anvendelse for måling av laserprinter output, ingen separasjon rgb\* (RGB)  
TUB-material: code=rh4ta



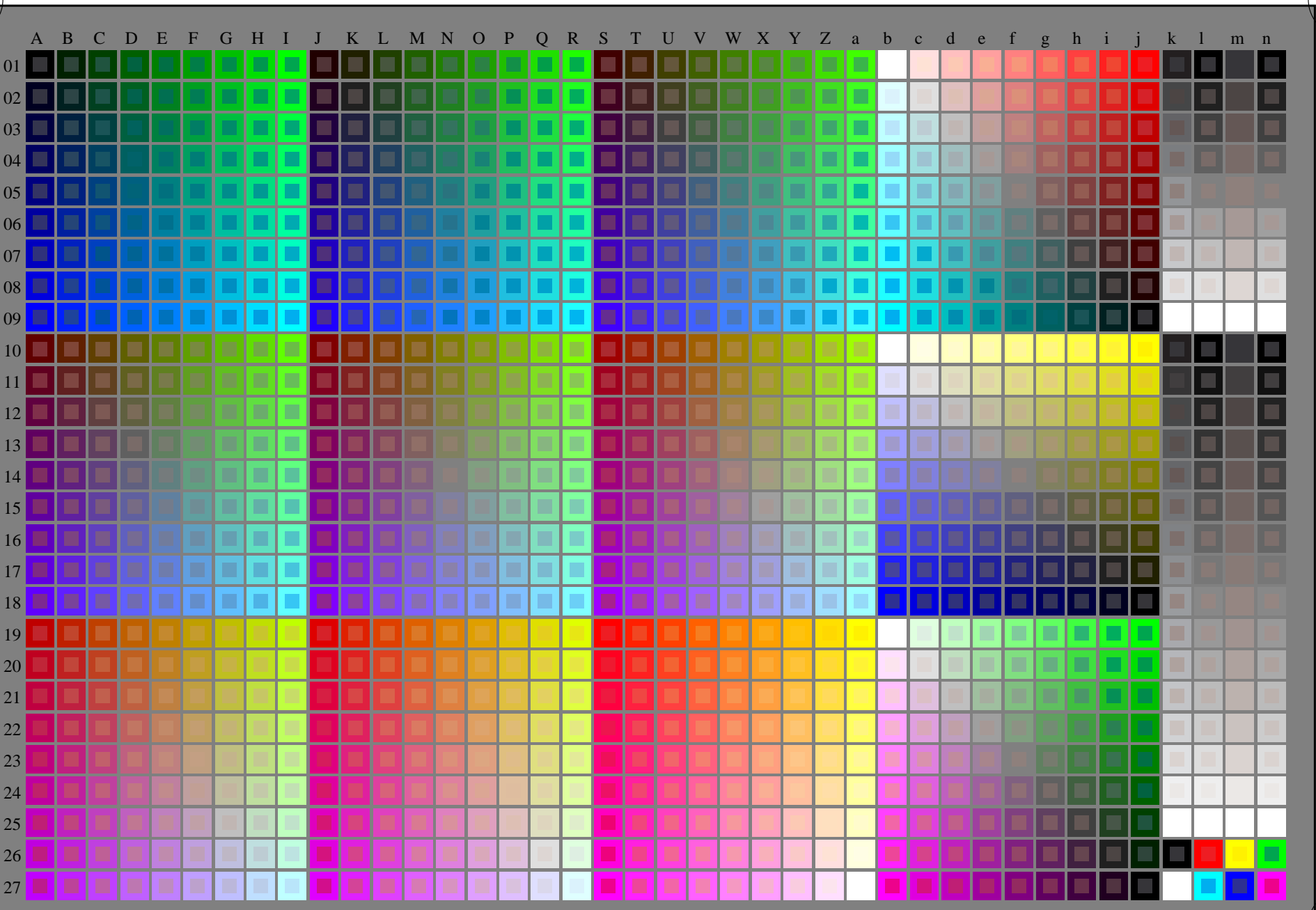
TUB-prøveplansje RN70; 1080 standard farger,  $cf=0,9$   
prøveplansje infølge DIN 33872, 3D=1,  $de=0$ ,  $rgb^*$

input:  $rgb/cmyk \rightarrow rgb_{dd}$   
output: 3D-linearisering til  $rgb^*_{dd}$



http://130.149.60.45/~farbmetrik/RN70/RN70L0FA.TXT /.PS; start output  
F: 3D-linearisering RN70/RN70LJ30FA.DAT i fil (F), side 1/2

se lignende filer: <http://130.149.60.45/~farbmetrik/RN70/RN70.HTM>  
teknisk informasjon: <http://www.ps.bam.de> eller <http://130.149.60.45/~farbmetrik>



TUB registrering: 20150701-RN70/RN70L0FA.TXT /.PS  
anvendelse for måling av laserprinter output

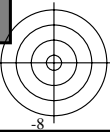
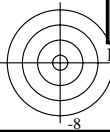
TUB-material: code=rh4ta

RN700-7N\_RGB 5-113034-L0

rgb (A\_j + k26\_n27), 000n (k), w (l), nnn0 (m), www (n), 3D = 1

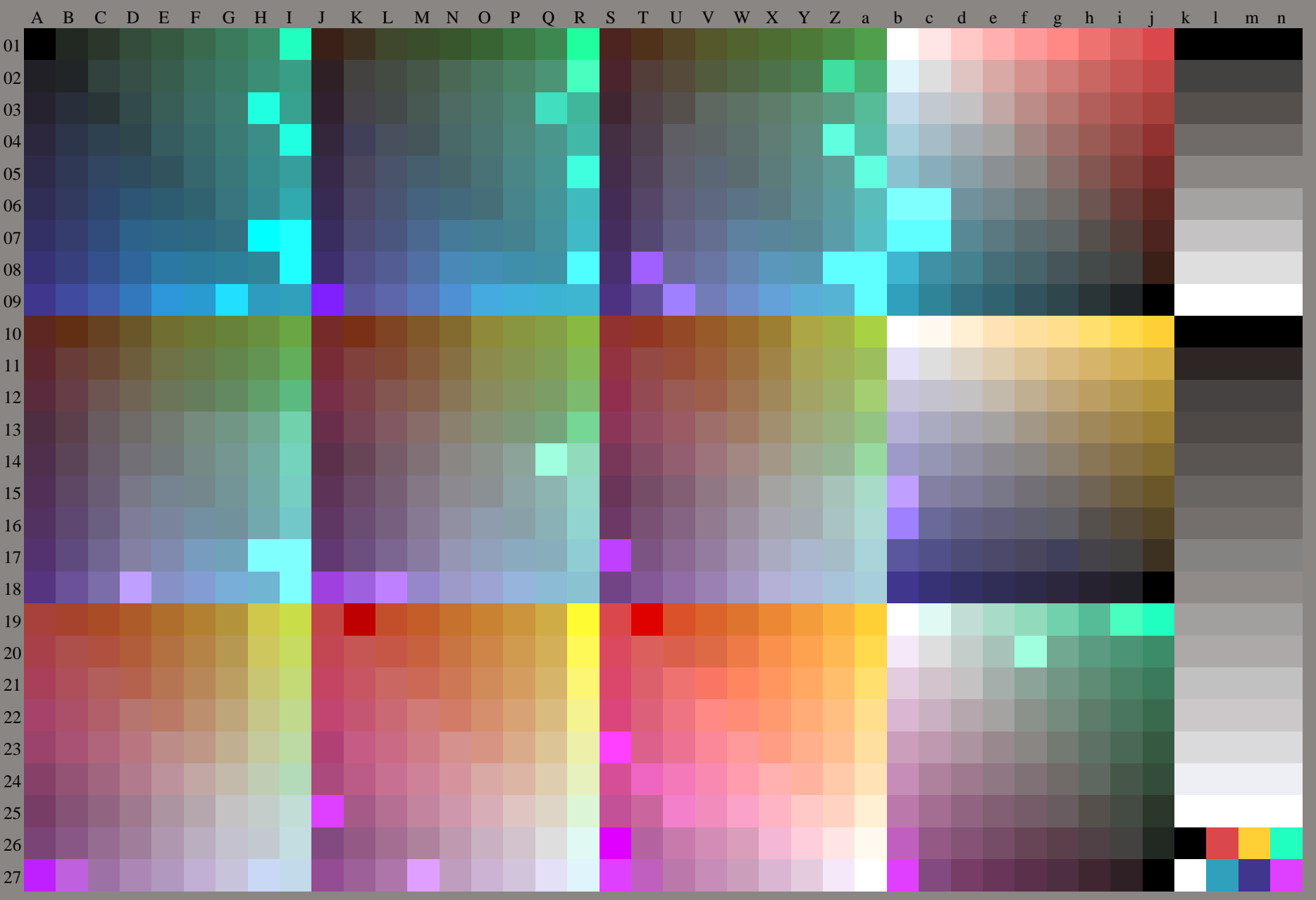
TUB-prøveplansje RN70; 1080 standard farger, cf=0,9  
prøveplansje infølge DIN 33872

input: rgb/cmyk -> rgb/cmyk  
output: ingen endring



se lignende filer: <http://130.149.60.45/~farbmetrik/RN70/RN70L0FA.TXT> / .PS  
teknisk informasjon: <http://www.ps.bam.de> eller <http://130.149.60.45/~farbmetrik>

TUB registrering: 20150701-RN70/RN70L0FA.TXT /.PS TUB-material: code=rh4ta  
anvendelse for måling av laserprinter output, ingen separasjon rgb\* (RGB)



TUB-prøveplansje RN70; 1080 standard farger,  $cf=0,9$   
prøveplansje infølge DIN 33872, 3D=1,  $de=1$ ,  $rgb^*$

input:  $rgb/cmyk \rightarrow rgb_{de}$   
output: 3D-linearisering til  $rgb^*_{de}$

