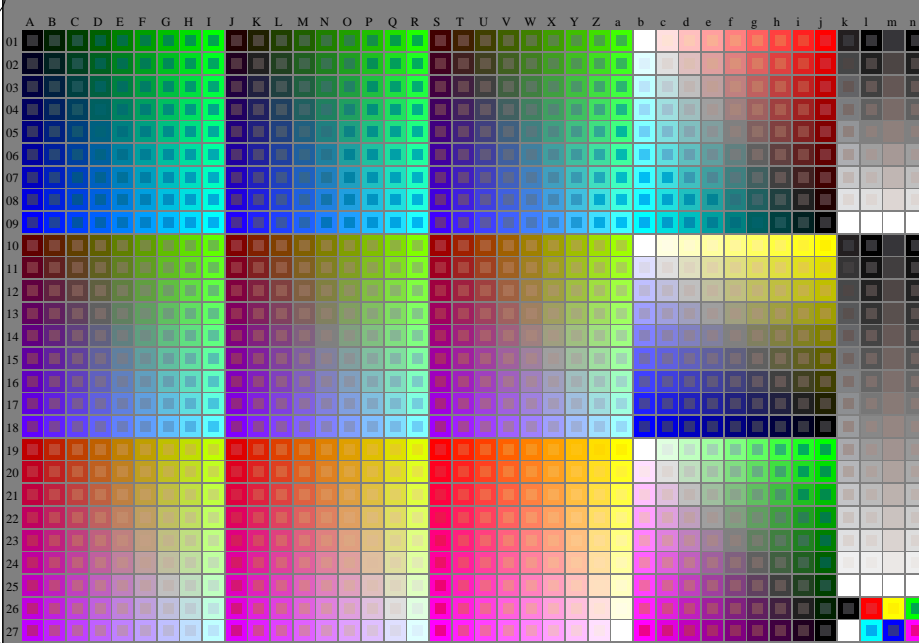


<http://130.149.60.45/~farbmetrik/RN61/RN61L0N1.TXT> /PS; start output  
N: ingen 3D-linearisering (OL) i fil (F) eller PS-startup (S), side 1/1

se tilsvarende filer: <http://130.149.60.45/~farbmetrik/RN61/RN61.HTM>  
teknisk information: <http://www.ps.bam.de> eller <http://130.149.60.45/~farbmetrik>



EN610-7N RGB 5-003034-L0

rgb (A..j + k26..n27), 000n (k), w (l), ann0 (m), www (n), 3D = 0

TUB-prøveplansje RN61; 1080 standard farger,  $cf=1$   
prøveplansje infølge DIN 33872

input: *rgb/cmyk* → *rgb/cmyk*  
output: ingen endring

TUB registrering: 20150701-RN61/RN61L0N1.TXT /PS  
anvendelse for måling av laserprinter output

TUB-material: code=thata