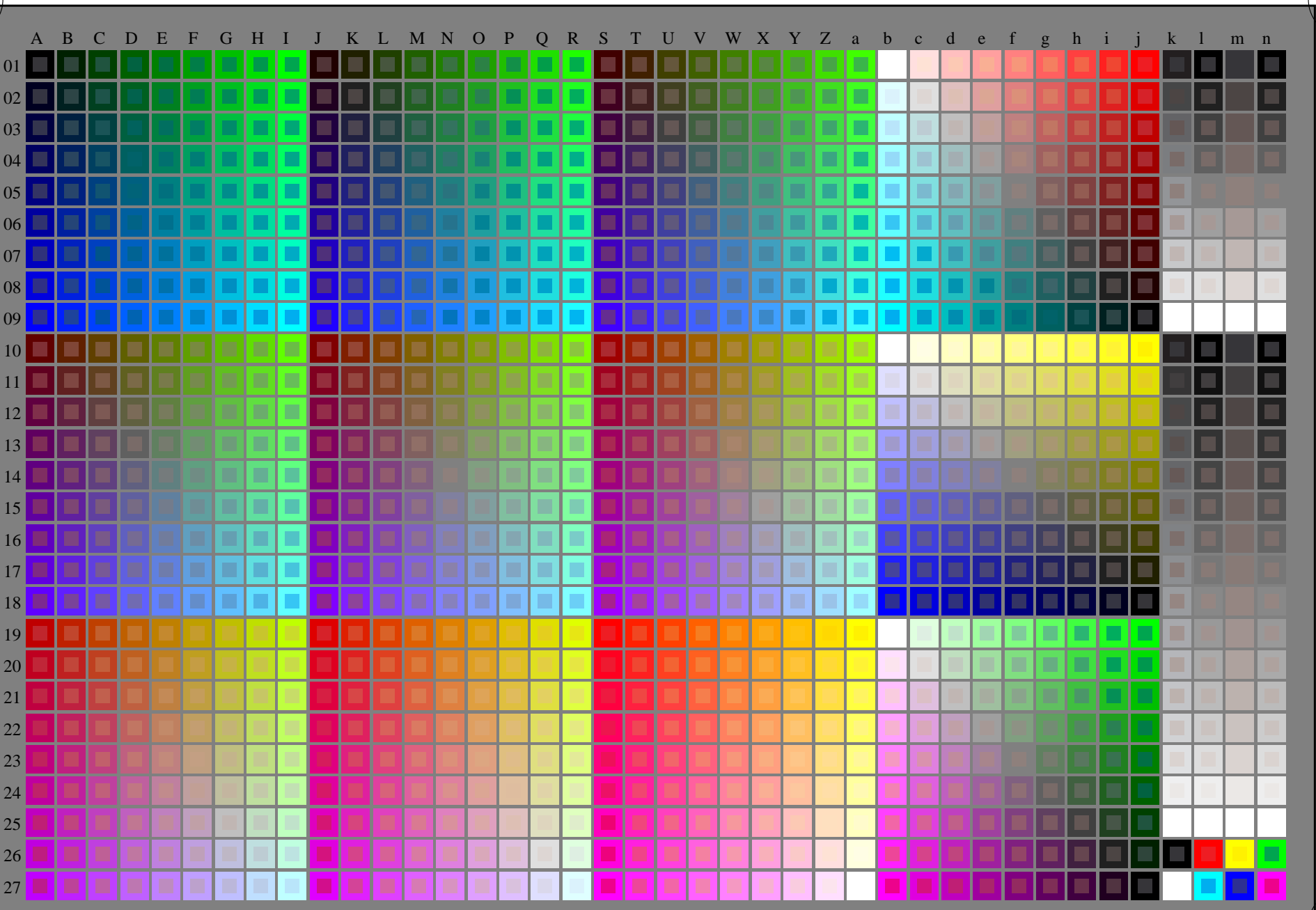


http://130.149.60.45/~farbmetrik/RN60/RN60LONA.TXT /.PS; start output
N: ingen 3D-linearisering (OL) i fil (F) eller PS-startup (S), side 1/2

se lignende filer: <http://130.149.60.45/~farbmetrik/RN60/RN60.HTM>
teknisk informasjon: <http://www.ps.bam.de> eller <http://130.149.60.45/~farbmetrik>



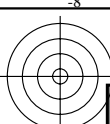
TUB registrering: 20150701-RN60/RN60LONA.TXT /.PS
anvendelse for måling av laserprinter output
TUB-material: code=rh4ta

rgb(A_j + k26_n27), 000n (k), w (l), nnn0 (m), www (n), 3D = 0

TUB-prøveplansje RN60; 1080 standard farger, cf=1
prøveplansje infølge DIN 33872

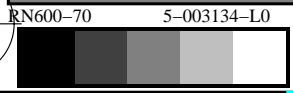
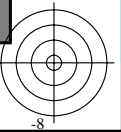
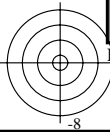
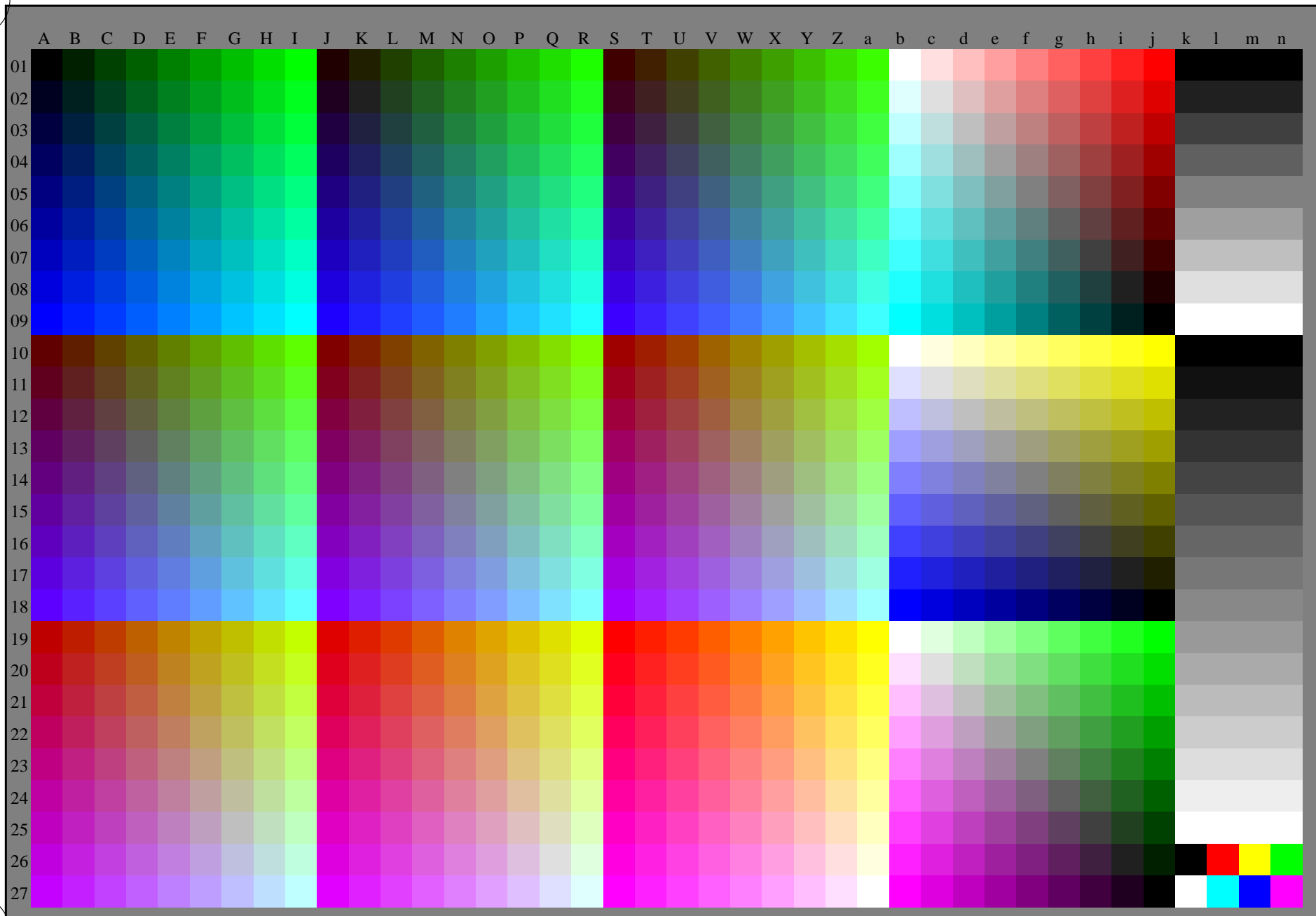
input: *rgb/cmyk* -> *rgb/cmyk*
output: ingen endring





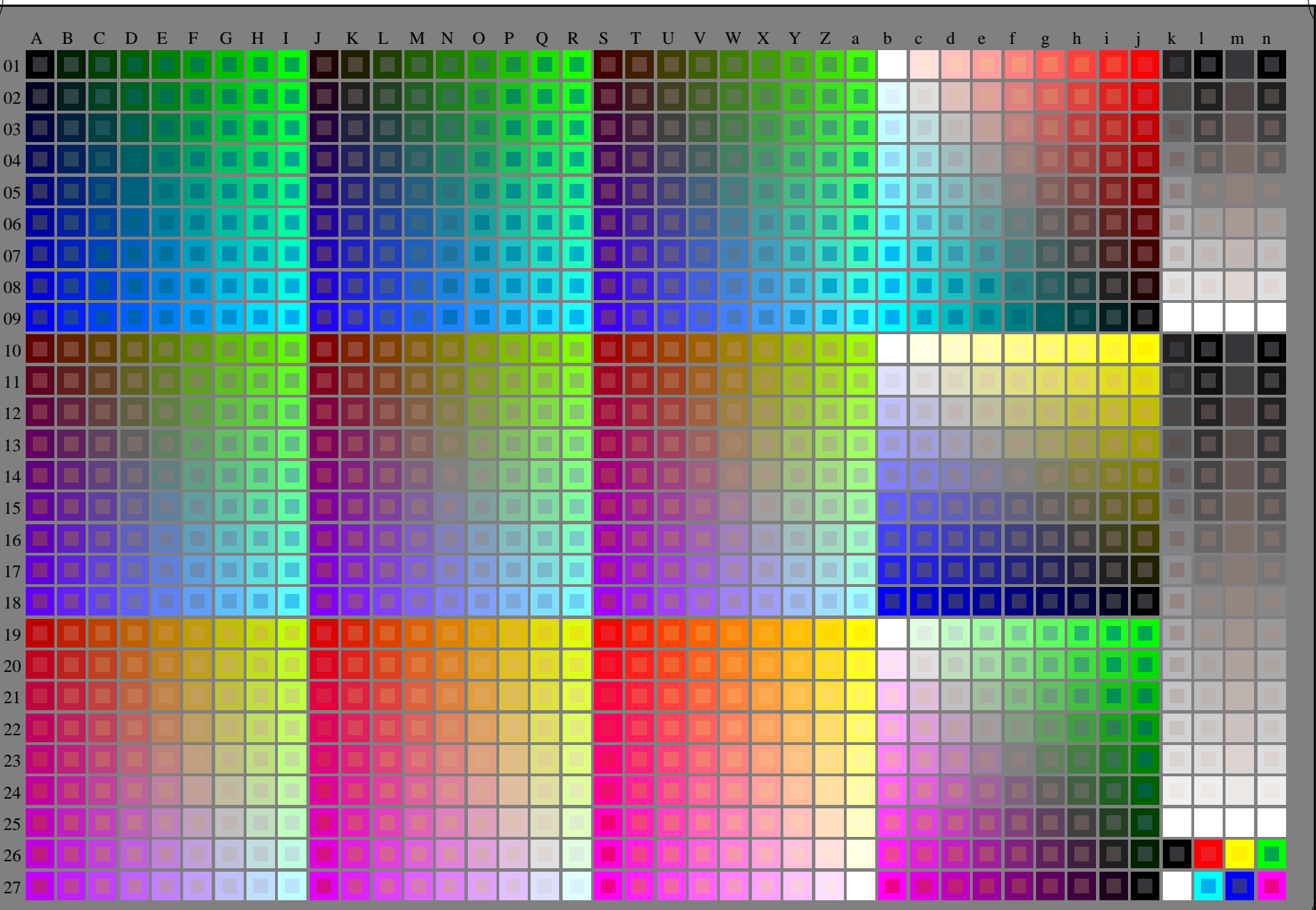
se lignende filer: <http://130.149.60.45/~farbmetrik/RN60/RN60.HTM>
teknisk informasjon: <http://www.ps.bam.de> eller <http://130.149.60.45/~farbmetrik>

TUB registrering: 20150701-RN60/RN60L0NA.TXT /.PS TUB-material: code=rh4ta
anvendelse for måling av laserprinter output, ingen separasjon rgb (RGB)



http://130.149.60.45/~farbmetrik/RN60/RN60LONA.TXT /.PS; start output
N: ingen 3D-linearisering (OL) i fil (F) eller PS-startup (S), side 1/2

se lignende filer: <http://130.149.60.45/~farbmetrik/RN60/RN60.HTM>
teknisk informasjon: <http://www.ps.bam.de> eller <http://130.149.60.45/~farbmetrik>



TUB registrering: 20150701-RN60/RN60LONA.TXT /.PS
anvendelse for måling av laserprinter output
TUB-material: code=rh4ta

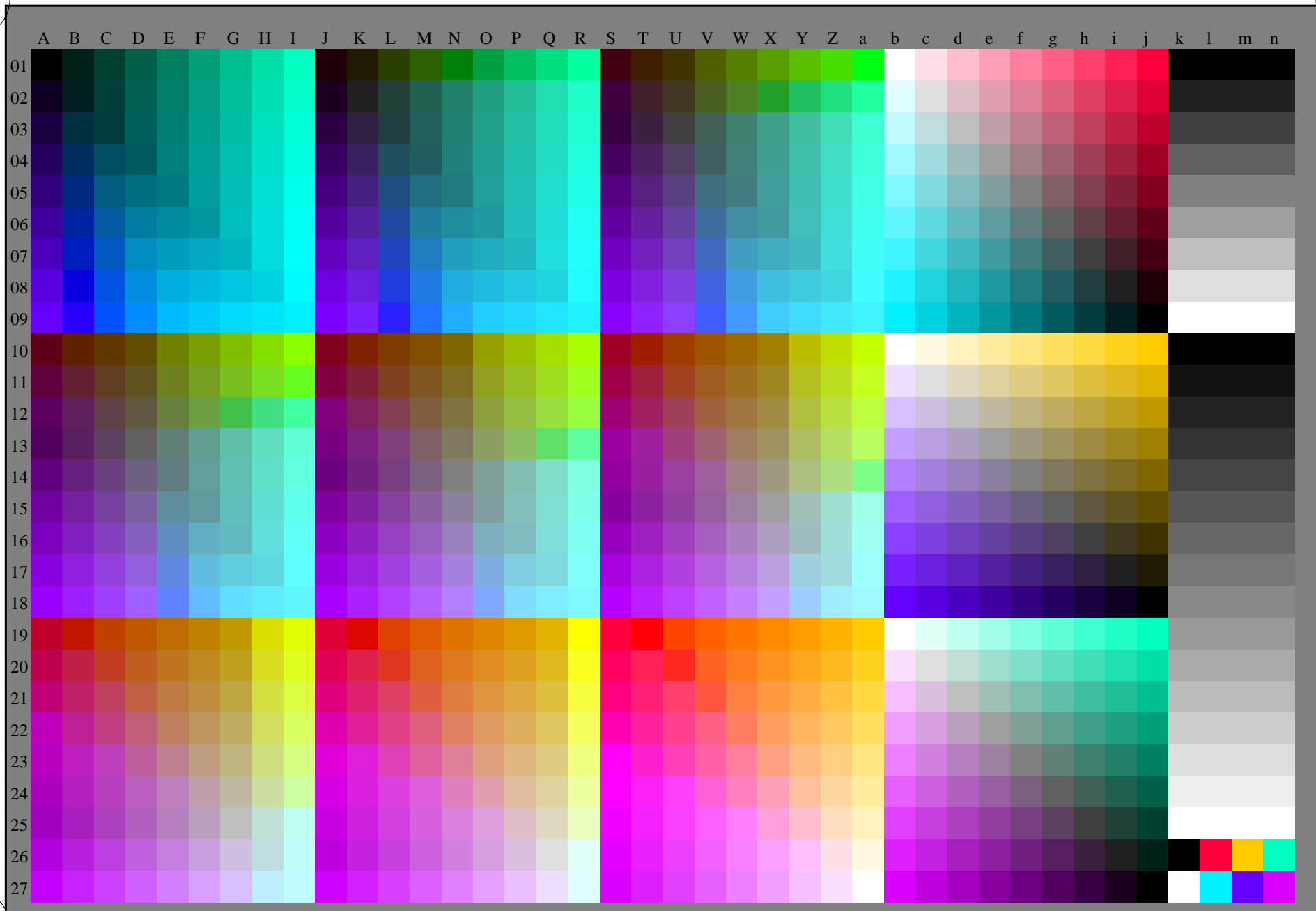
RGB60-7N_RGB 5-013034-L0 rgb(A_j + k26_n27), 000n (k), w (l), nnn0 (m), www (n), 3D = 0

TUB-prøveplansje RN60; 1080 standard farger, cf=1
prøveplansje infølge DIN 33872

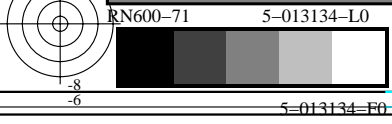
input: rgb/cmyk -> rgb/cmyk
output: ingen endring

http://130.149.60.45/~farbmetrik/RN60/RN60L0NA.TXT /.PS; overføring output
N: ingen 3D-linearisering (OL) i fil (F) eller PS-startup (S), side 2/2

se lignende filer: <http://130.149.60.45/~farbmetrik/RN60/RN60.HTM>
teknisk informasjon: <http://www.ps.bam.de> eller <http://130.149.60.45/~farbmetrik>



TUB registrering: 20150701-RN60/RN60L0NA.TXT /.PS TUB-material: code=rh4ta
anvendelse for måling av laserprinter output, ingen separasjon rgb (RGB)



TUB-prøveplansje RN60; 1080 standard farger, cf=1
prøveplansje infølge DIN 33872, 3D=0, de=1, rgb

input: *rgb/cmyk* -> *rgb_e*
output: overføring til *rgb_e*

