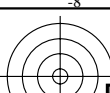


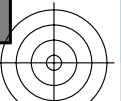
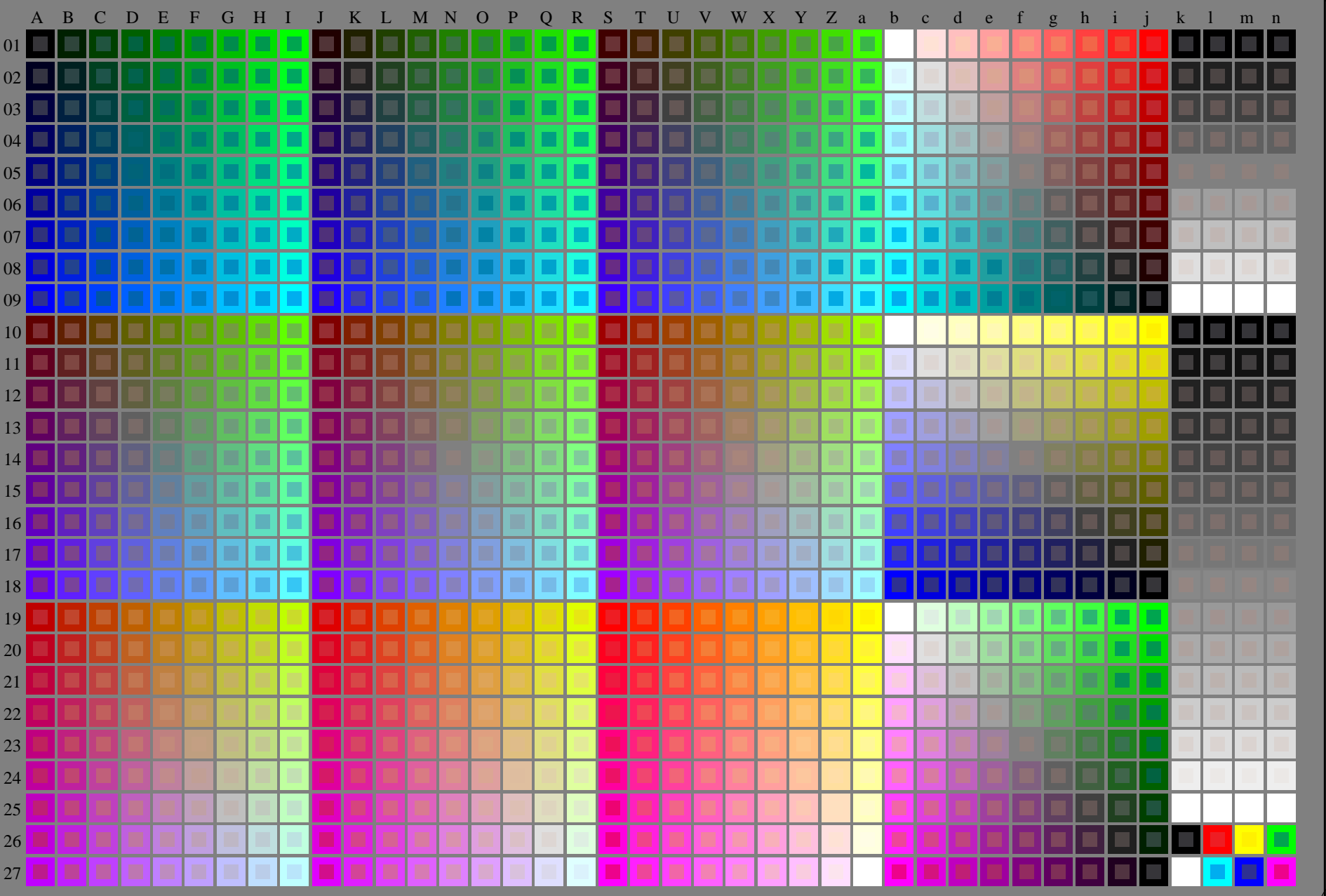
http://130.149.60.45/~farbmetrik/RN58/RN58L0NP.PDF /.PS; start output
N: ingen 3D-linearisering (OL) i fil (F) eller PS-startup (S), side 1/33



se lignende filer: <http://130.149.60.45/~farbmetrik/RN58/RN58.HTM>
teknisk informasjon: <http://www.ps.bam.de> eller <http://130.149.60.45/~farbmetrik>

TUB registrering: 20150701-RN58/RN58L0NP.PDF /.PS
anvendelse for måling av offsettrykk output

TUB-material: code=rh4ta



5-013031-L0 RN580-7N

rgb + cmy0 (A_j + k26_n27), 000n (k), w (l), nnn0 (m), www (n), 3D=0

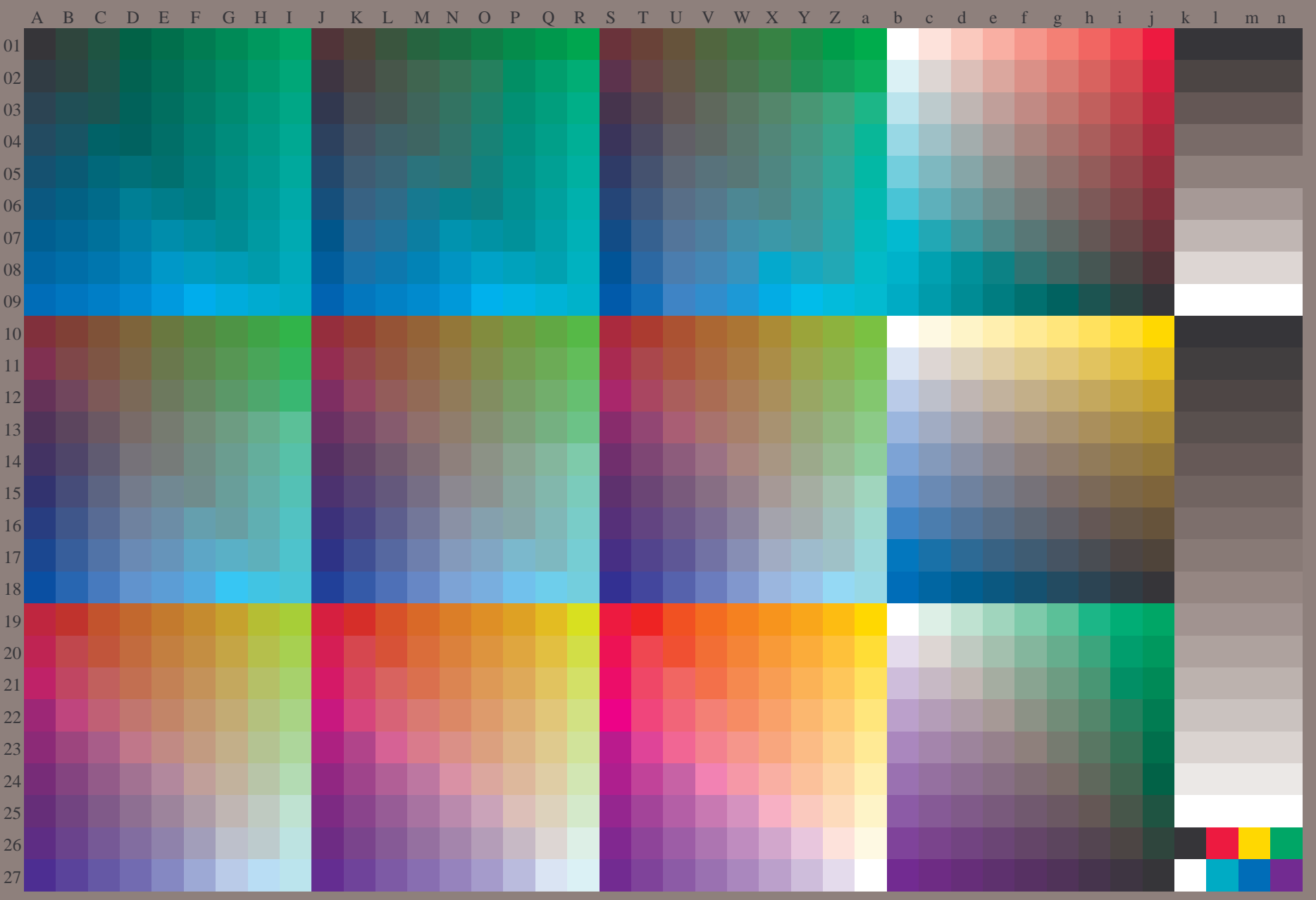
TUB-prøveplansje RN58; 1080 standard farger
prøveplansje infølge DIN 33872, 3D=0, de=1, cmy0

input: *rgb/cmyk* -> *rgb/cmyk*
output: ingen endring



se lignende filer: <http://130.149.60.45/~farbmetrik/RN58/RN58.HTM>
teknisk informasjon: <http://www.ps.bam.de> eller <http://130.149.60.45/~farbmetrik>

TUB registrering: 20150701-RN58/RN58L0NP.PDF /.PS TUB-material: code=rh4ta
anvendelse for måling av offsettrykk output, separasjon cmy0 (CMY0)



5-013131-L0 RN580-71

rgb (A_n), 3D=0

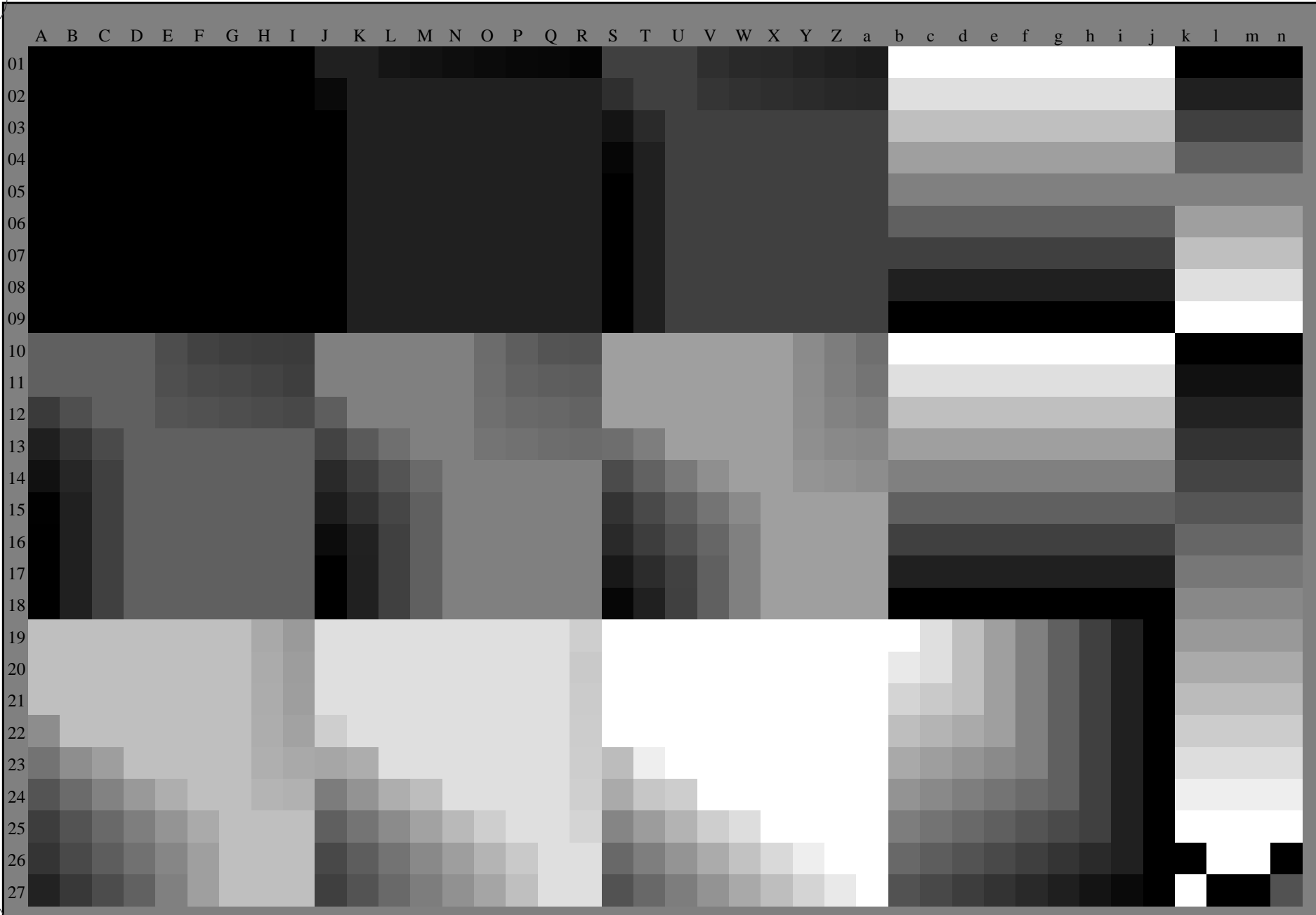
TUB-prøveplansje RN58; 1080 standard farger
prøveplansje infølge DIN 33872, 3D=0, de=1, cmy0

input: $rgb/cmyk \rightarrow rgb_e$
output: overføring til $cmy0_e$

5-013131-F0

C M Y O L V

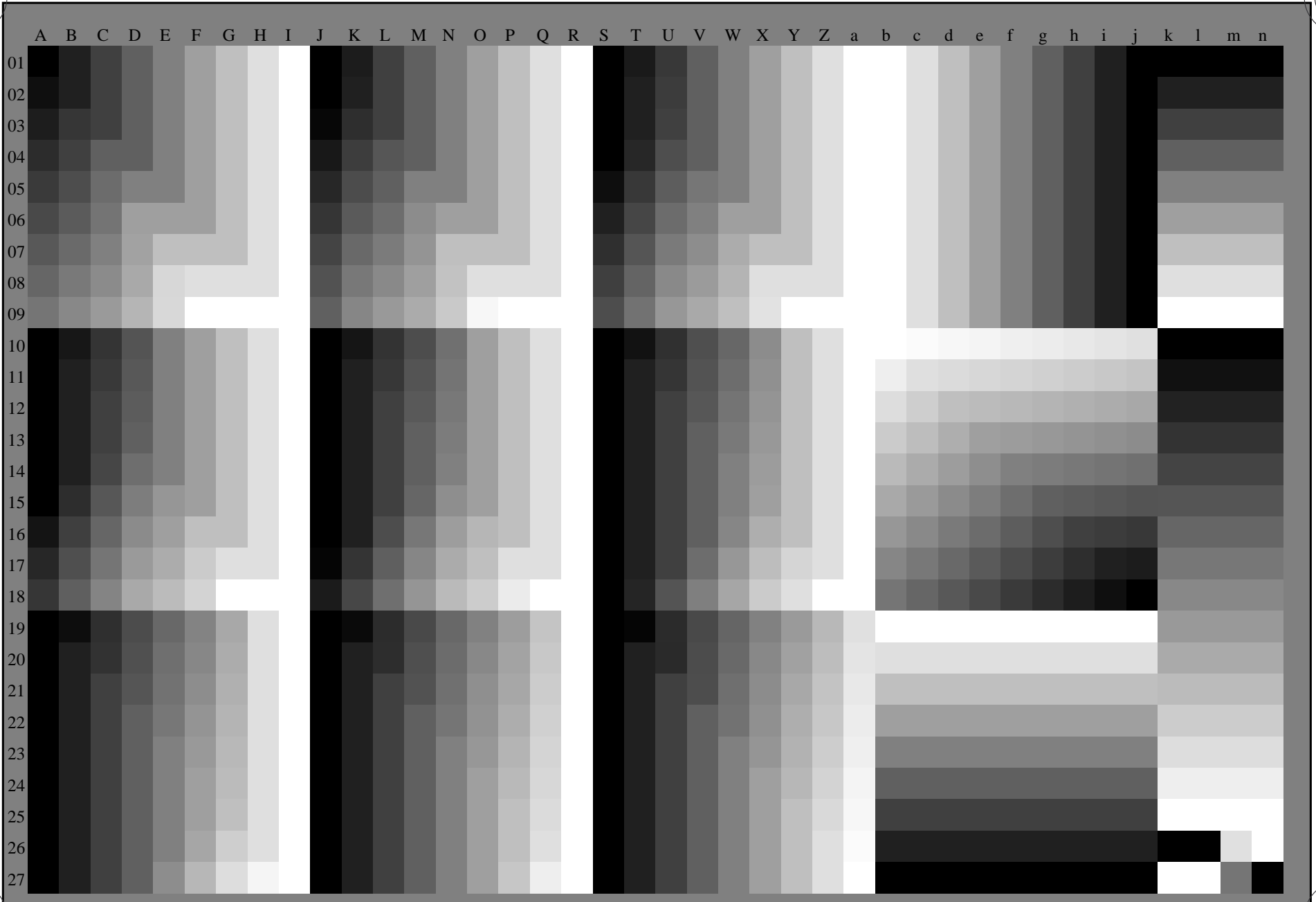
se lignende filer: <http://130.149.60.45/~farbmetrik/RN58/RN58.HTM>
teknisk informasjon: <http://www.ps.bam.de> eller <http://130.149.60.45/~farbmetrik>



5-013231-L0 RN580-71 .3D=0

TUB registrering: 20150701-RN58/RN58L0NP.PDF /.PS TUB-material: code=rh4ta
anvendelse for måling av offsettrykk output, separasjon cmy0 (CMY0)

se lignende filer: <http://130.149.60.45/~farbmetrik/RN58/RN58.HTM>
teknisk informasjon: <http://www.ps.bam.de> eller <http://130.149.60.45/~farbmetrik>



5-013331-L0 RN580-71

.3D=0

TUB-prøveplansje RN58; 1080 standard farger
prøveplansje infølge DIN 33872, 3D=0, de=1, cmy0

input: $rgb/cmyk \rightarrow rgb_e$
output: overføring til $cmy0_e$

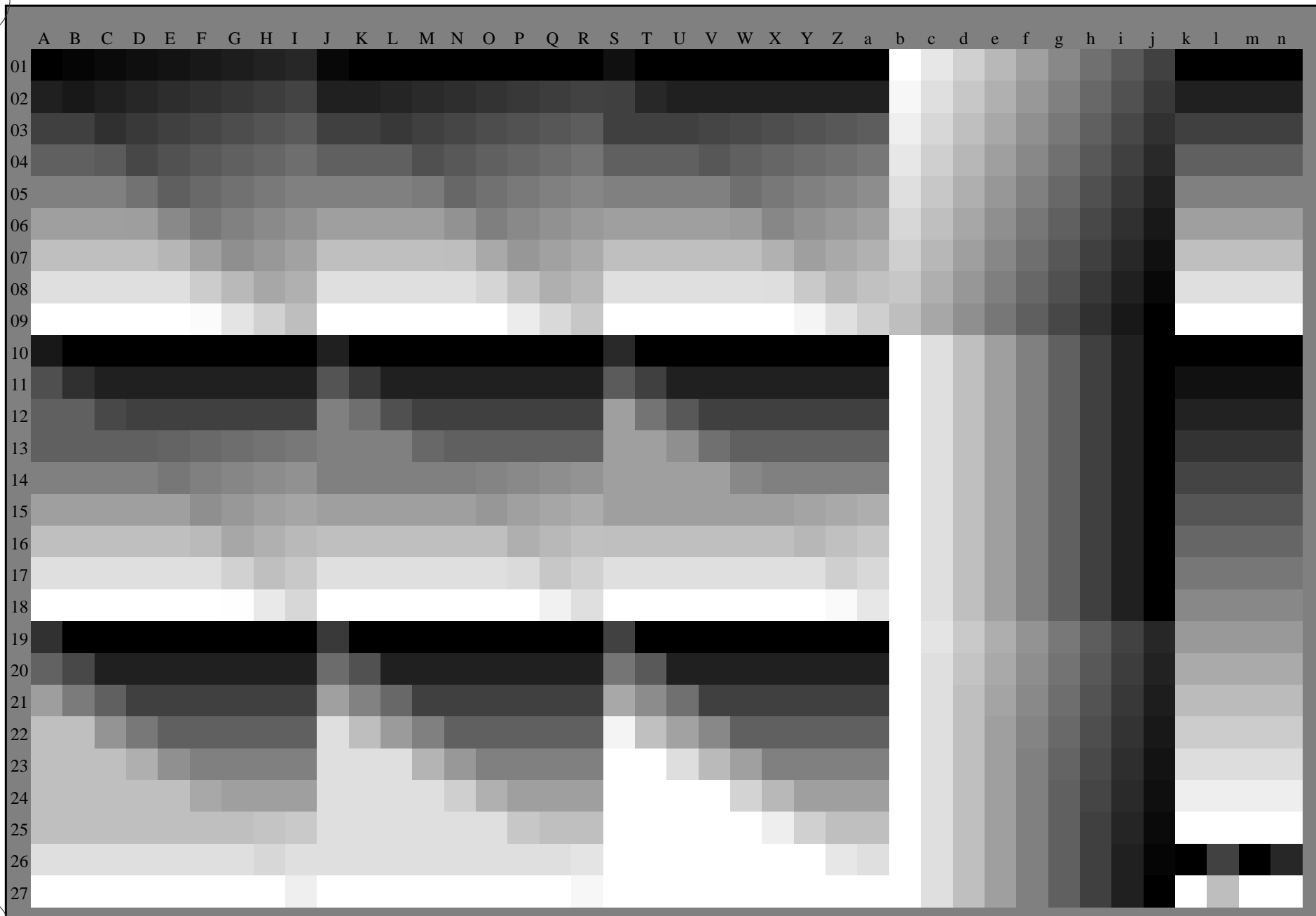
TUB registrering: 20150701-RN58/RN58L0NP.PDF /.PS
anvendelse for måling av offsettrykk output, separasjon cmy0 (CMY0)
TUB-material: code=rh4ta

5-013331-F0

C M Y O L V

se iflgende filer: <http://130.149.60.45/~farbmetrik/RN58/RN58.HTM>
teknisk informasjon: <http://www.ps.bam.de> eller <http://130.149.60.45/~farbmetrik>

TUB registrering: 20150701-RN58/RN58L0NP.PDF /.PS TUB-material: code=rh4ta
anvendelse for måling av offsettrykk output, separasjon cmy0 (CMY0)

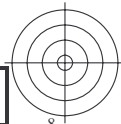
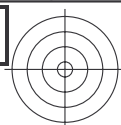


5-013431-L0 RN580-71 .3D=0

TUB-prøveplansje RN58; 1080 standard farger
prøveplansje infølge DIN 33872, 3D=0, de=1, cmy0

input: *rgb/cmyk* -> *rgb_e*
output: overføring til *cmy0_e*

5-013431-F0

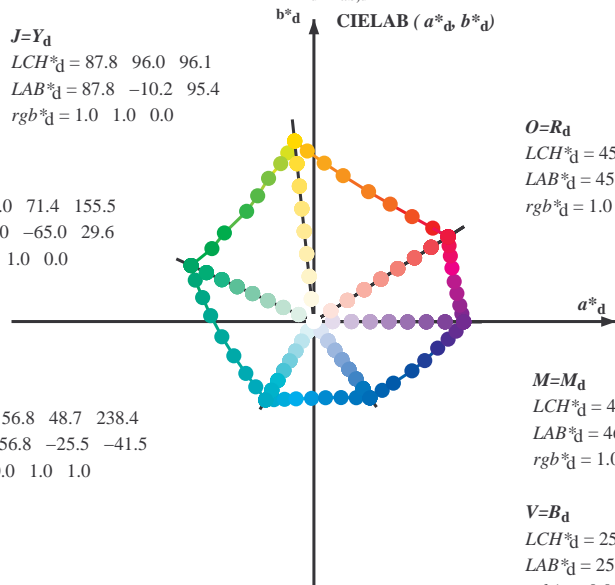


Data til maksimalfargen M in fargemetrisk system Offset standard print; separation cmy0*, D65 for input eller output; Seks fargetonevinkler til 60 graders standardfargene RYGBM_s: h_{ab,ds} = 30.0, 90.0, 150.0, 210.0, 270.0, 330.0; seks fargetonevinkler til apparatfargene RYGBM_d: h_{ab,d} = 32.3, 96.1, 155.5, 238.4, 306.2, 359.8; seks fargetonevinkler til elementærfargene RYGBM_e: h_{ab,e} = 25.5, 92.3, 162.2, 217.0, 271.7, 328.6

J=Y_d
 LCH*_d = 87.8 96.0 96.1
 LAB*_d = 87.8 -10.2 95.4
 rgb*_d = 1.0 1.0 0.0

L=G_d
 LCH*_d = 50.0 71.4 155.5
 LAB*_d = 50.0 -65.0 29.6
 rgb*_d = 0.0 1.0 0.0

C=C_d
 LCH*_d = 56.8 48.7 238.4
 LAB*_d = 56.8 -25.5 -41.5
 rgb*_d = 0.0 1.0 1.0



O=R_d
 LCH*_d = 45.4 83.9 32.3
 LAB*_d = 45.4 70.9 44.8
 rgb*_d = 1.0 0.0 0.0

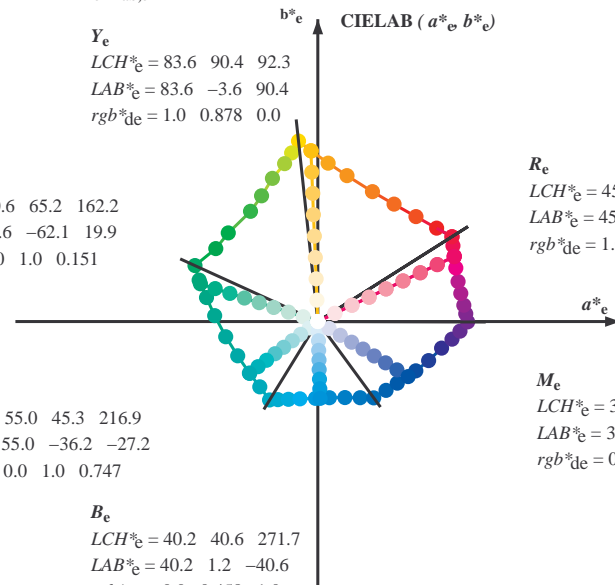
M=M_d
 LCH*_d = 46.1 79.3 359.8
 LAB*_d = 46.1 79.3 -0.2
 rgb*_d = 1.0 0.0 1.0

V=B_d
 LCH*_d = 25.0 50.0 306.2
 LAB*_d = 25.0 29.5 -40.4
 rgb*_d = 0.0 0.0 1.0

Y_e
 LCH*_e = 83.6 90.4 92.3
 LAB*_e = 83.6 -3.6 90.4
 rgb*_{de} = 1.0 0.878 0.0

G_e
 LCH*_e = 50.6 65.2 162.2
 LAB*_e = 50.6 -62.1 19.9
 rgb*_{de} = 0.0 1.0 0.151

C_e
 LCH*_e = 55.0 45.3 216.9
 LAB*_e = 55.0 -36.2 -27.2
 rgb*_{de} = 0.0 1.0 0.747



R_e
 LCH*_e = 45.6 80.0 25.4
 LAB*_e = 45.6 72.2 34.4
 rgb*_{de} = 1.0 0.0 0.254

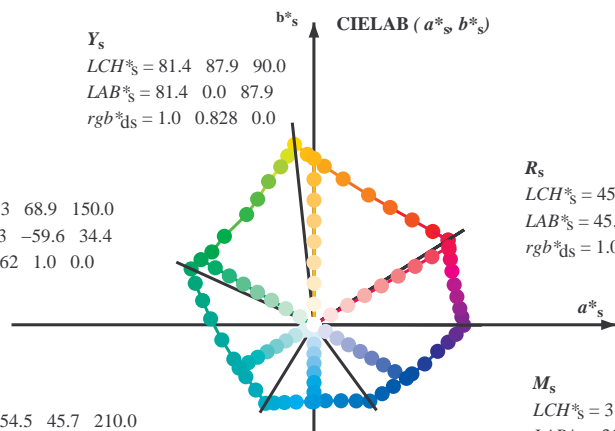
M_e
 LCH*_e = 31.1 55.9 328.6
 LAB*_e = 31.1 47.7 -29.1
 rgb*_{de} = 0.321 0.0 1.0

B_e
 LCH*_e = 40.2 40.6 271.7
 LAB*_e = 40.2 1.2 -40.6
 rgb*_{de} = 0.0 0.458 1.0

Y_s
 LCH*_s = 81.4 87.9 90.0
 LAB*_s = 81.4 0.0 87.9
 rgb*_{ds} = 1.0 0.828 0.0

G_s
 LCH*_s = 52.3 68.9 150.0
 LAB*_s = 52.3 -59.6 34.4
 rgb*_{ds} = 0.062 1.0 0.0

C_s
 LCH*_s = 54.5 45.7 210.0
 LAB*_s = 54.5 -39.6 -22.8
 rgb*_{ds} = 0.0 1.0 0.685



R_s
 LCH*_s = 45.5 82.4 30.0
 LAB*_s = 45.5 71.3 41.2
 rgb*_{ds} = 1.0 0.0 0.096

M_s
 LCH*_s = 31.6 56.5 330.0
 LAB*_s = 31.6 49.0 -28.2
 rgb*_{ds} = 0.337 0.0 1.0

B_s
 LCH*_s = 40.9 40.6 270.0
 LAB*_s = 40.9 0.0 -40.6
 rgb*_{ds} = 0.0 0.479 1.0

(a*_d b*_d), (a*_s b*_s), (a*_e b*_e)

rgb*_e LCH*_s LAB*_s

h_{ab,s} rgb*_s

$$h_{ab,s} = \text{atan} [r^*_d \cos(30) + g^*_d \cos(150)] / [r^*_d \sin(30) + g^*_d \sin(150) + b^*_d \sin(270)] \quad (1)$$

h_{ab,s}

s: h_{ab,s} = 30.0, 90.0, 150.0, 210.0, 270.0, 330.0, 390.0 (i=0,6)

$$h_{48ab,sij} = h_{ab,si} + j [h_{ab,si+1} - h_{ab,si}] / 8 \quad (i = 0, 1, \dots, 5; j = 0, 1, \dots, 7) \quad (2)$$

$$h_{360ab,sij} = h_{ab,si} + j [h_{ab,si+1} - h_{ab,si}] / 60 \quad (i = 0, 1, \dots, 5; j = 0, 1, \dots, 59) \quad (3)$$

h_{ab,e}

e: h_{ab,e} = 25.5, 92.3, 162.2, 217.0, 271.7, 328.6, 385.5 (i=0,6)

$$h_{48ab,eij} = h_{ab,ei} + j [h_{ab,ei+1} - h_{ab,ei}] / 8 \quad (i = 0, 1, \dots, 5; j = 0, 1, \dots, 7) \quad (4)$$

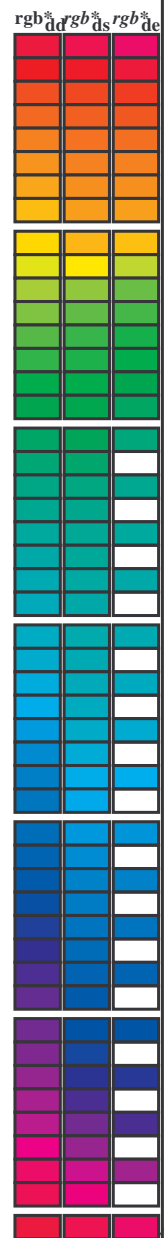
$$h_{360ab,eij} = h_{ab,ei} + j [h_{ab,ei+1} - h_{ab,ei}] / 60 \quad (i = 0, 1, \dots, 5; j = 0, 1, \dots, 59) \quad (5)$$

h_{ab,d}

rgb*_d

Data til maksimumsfargene M in farge­metrisk system Offset standard print; separation cmy0*, D65 for input eller output; Seks fargetonevinkler til 60 graders standardfargene RYGBM_s: h_{ab,ds} = 30.0, 90.0, 150.0, 210.0, 270.0, 330.0; seks fargetonevinkler til apparatfargene RYGBM_d: h_{ab,d} = 32.3, 96.1, 155.5, 238.4, 306.2, 359.8; seks fargetonevinkler til elementærfargene RYGBM_c: h_{ab,c} = 25.5, 92.3, 162.2, 217.0, 271.7, 328.6

Table with 27 columns and multiple rows of numerical data. Headers include labels like 'h_ab,d', 'h_ab,s', 'h_ab,e', 'rgb*dd64M', 'LAB*dxd64M', 'rgb*dxd361M', 'LAB*dxd361M', 'rgb*dsx361M', 'LAB*dsx361M', 'rgb*dex361M', 'LAB*dex361M'.

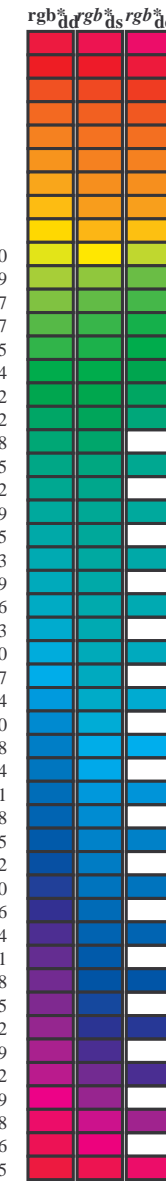


teknisk informasjon: http://www.ps.bam.de eller http://130.149.60.45/~farbmetrik

TUB registrering: 20150701-RN58/RN58LONP.PDF /.PS anvendelse for måling av offsettrykk output, separasjon cmy0 (CMY0) TUB-material: code=rh4ta

Data til maksimalfargen M i fargemetrisk system Offset standard print; separation cmy0*, D65 for input eller output; Seks fargetonevinkler til 60 graders standardfargene RYGCMB_s: h_{ab,ds} = 30.0, 90.0, 150.0, 210.0, 270.0, 330.0; seks fargetonevinkler til apparatfargene RYGCMB_d: h_{ab,d} = 32.3, 96.1, 155.5, 238.4, 306.2, 359.8; seks fargetonevinkler til elementærfargene RYGCMB_c: h_{ab,c} = 25.5, 92.3, 162.2, 217.0, 271.7, 328.6

h _{ab,d}	h _{ab,s}	h _{ab,e}	rgb* dd64M	LAB* ddx64M (x=LabCh)	rgb* dex361M	LAB* dex361M
32.3	30.0	25.4	1.0 0.0 0.0	45.4 70.9 44.8 83.9 32.3	1.0 0.0 0.255 45.7 72.2 34.4 80.0 25	
38.1	37.5	33.8	1.0 0.125 0.0	48.9 62.8 49.4 79.9 38.1	1.0 0.021 0.0 46.0 69.6 45.7 83.3 33	
46.8	45.0	42.1	1.0 0.25 0.0	53.6 51.9 55.5 76.0 46.8	1.0 0.183 0.0 51.1 57.9 52.5 78.1 42	
56.9	52.5	50.5	1.0 0.375 0.0	59.1 40.3 62.0 74.0 56.9	1.0 0.288 0.0 55.4 48.5 57.8 75.4 49	
67.1	60.0	58.8	1.0 0.5 0.0	64.9 28.9 68.6 74.5 67.1	1.0 0.398 0.0 60.3 38.3 63.5 74.1 58	
78.6	67.5	67.2	1.0 0.625 0.0	72.1 15.4 77.1 78.6 78.6	1.0 0.494 0.0 64.6 29.5 68.4 74.5 66	
86.2	75.0	75.6	1.0 0.75 0.0	77.9 5.4 83.8 84.0 86.2	1.0 0.592 0.0 70.2 19.3 75.2 77.6 75	
92.1	82.5	83.9	1.0 0.875 0.0	83.4 -3.4 90.2 90.2 92.1	1.0 0.703 0.0 75.8 9.4 81.5 82.0 83	
96.1	90.0	92.3	1.0 1.0 0.0	87.8 -10.2 95.4 96.0 96.1	1.0 0.879 0.0 83.6 -3.6 90.4 90.5 92	
98.8	97.5	101.0	0.875 1.0 0.0	84.3 -13.9 89.2 90.3 98.8	0.807 1.0 0.0 82.4 -15.8 86.2 87.7 100	
101.8	105.0	109.7	0.75 1.0 0.0	80.7 -17.5 83.5 85.3 101.8	0.583 1.0 0.0 73.7 -26.1 72.7 77.3 109	
107.6	112.5	118.5	0.625 1.0 0.0	75.3 -24.0 75.7 79.4 107.6	0.434 1.0 0.0 68.0 -32.9 62.2 70.5 117	
114.0	120.0	127.2	0.5 1.0 0.0	70.6 -29.7 66.5 72.8 114.0	0.322 1.0 0.0 62.6 -40.8 53.8 67.6 127	
121.4	127.5	136.0	0.375 1.0 0.0	65.7 -35.6 58.3 68.3 121.4	0.249 1.0 0.0 58.4 -47.4 46.8 66.6 135	
135.3	135.0	144.7	0.25 1.0 0.0	58.4 -47.3 46.8 66.6 135.3	0.122 1.0 0.0 54.6 -54.2 38.4 66.5 144	
144.4	142.5	153.4	0.125 1.0 0.0	54.7 -53.9 38.5 66.3 144.4	0.03 1.0 0.0 51.2 -62.4 32.0 70.2 152	
155.5	150.0	162.2	0.0 1.0 0.0	50.0 -65.0 29.6 71.4 155.5	0.0 1.0 0.151 50.7 -62.0 19.9 65.2 162	
160.7	157.5	169.0	0.0 1.0 0.125 50.5	-62.8 21.9 66.5 160.7	0.0 1.0 0.261 51.3 -58.5 11.8 59.8 168	
167.7	165.0	175.9	0.0 1.0 0.25 51.2	-58.9 12.7 60.3 167.7	0.0 1.0 0.364 52.0 -55.0 3.9 55.2 175	
176.7	172.5	182.7	0.0 1.0 0.375 52.0	-54.5 3.1 54.6 176.7	0.0 1.0 0.43 52.5 -52.2 -2.0 52.3 182	
189.3	180.0	189.6	0.0 1.0 0.5 52.9	-48.6 -8.0 49.3 189.3	0.0 1.0 0.502 53.0 -48.5 -8.1 49.3 189	
203.2	187.5	196.4	0.0 1.0 0.625 54.0	-42.3 -18.1 46.1 203.2	0.0 1.0 0.56 53.5 -45.9 -13.1 47.8 195	
217.2	195.0	203.2	0.0 1.0 0.75 55.0	-36.0 -27.4 45.3 217.2	0.0 1.0 0.626 54.1 -42.3 -18.1 46.1 203	
228.3	202.5	210.1	0.0 1.0 0.875 55.8	-30.7 -34.5 46.2 228.3	0.0 1.0 0.682 54.5 -39.6 -22.6 45.7 209	
238.4	210.0	216.9	0.0 1.0 1.0 56.8	-25.5 -41.5 48.7 238.4	0.0 1.0 0.747 55.0 -36.1 -27.2 45.3 216	
242.9	217.5	223.8	0.0 0.875 1.0 54.1	-21.1 -41.3 46.4 242.9	0.0 1.0 0.819 55.5 -33.2 -31.3 45.8 223	
249.3	225.0	230.6	0.0 0.75 1.0 50.4	-15.5 -41.1 43.9 249.3	0.0 1.0 0.904 56.1 -29.6 -36.1 46.8 230	
256.9	232.5	237.5	0.0 0.625 1.0 46.5	-9.4 -40.8 41.9 256.9	0.0 1.0 0.983 56.7 -26.2 -40.5 48.4 237	
268.2	240.0	244.3	0.0 0.5 1.0 41.7	-1.2 -40.6 40.6 268.2	0.0 0.847 1.0 53.3 -19.8 -41.3 45.9 244	
278.6	247.5	251.2	0.0 0.375 1.0 37.3	6.1 -40.2 40.7 278.6	0.0 0.726 1.0 49.7 -14.3 -41.1 43.6 250	
289.6	255.0	258.0	0.0 0.25 1.0 32.8	14.3 -40.2 42.7 289.6	0.0 0.613 1.0 46.1 -8.6 -40.8 41.9 258	
299.0	262.5	264.8	0.0 0.125 1.0 28.6	22.4 -40.2 46.1 299.0	0.0 0.542 1.0 43.4 -3.9 -40.8 41.1 264	
306.2	270.0	271.7	0.0 0.0 1.0 25.0	29.5 -40.4 50.0 306.2	0.0 0.458 1.0 40.3 1.2 -40.6 40.7 271	
314.7	277.5	278.8	0.125 0.0 1.0 27.9	36.0 -36.4 51.2 314.7	0.0 0.378 1.0 37.5 5.9 -40.2 40.7 278	
322.1	285.0	285.9	0.25 0.0 1.0 28.8	41.9 -32.5 53.1 322.1	0.0 0.292 1.0 34.4 11.6 -40.3 42.0 285	
333.3	292.5	293.0	0.375 0.0 1.0 32.7	51.8 -26.0 58.0 333.3	0.0 0.211 1.0 31.5 16.8 -40.3 43.8 292	
340.5	300.0	300.1	0.5 0.0 1.0 35.6	58.6 -20.7 62.1 340.5	0.0 0.106 1.0 28.1 23.5 -40.3 46.7 300	
347.9	307.5	307.2	0.625 0.0 1.0 38.1	65.4 -14.0 66.9 347.9	0.0 0.009 0.0 25.3 30.1 -40.1 50.2 306	
352.5	315.0	314.3	0.75 0.0 1.0 41.8	71.0 -9.2 71.6 352.5	0.0 0.12 0.0 27.8 35.8 -36.5 51.2 314	
356.1	322.5	321.4	0.875 0.0 1.0 44.2	75.2 -5.0 75.3 356.1	0.0 0.231 0.0 28.7 41.1 -33.2 52.9 321	
359.8	330.0	328.6	1.0 0.0 1.0 46.1	79.3 -0.2 79.3 359.8	0.0 0.322 0.0 31.1 47.8 -29.1 56.0 328	
363.0	337.5	335.7	1.0 0.0 0.875 45.9	78.2 4.1 78.3 363.0	0.0 0.408 0.0 33.5 53.7 -24.7 59.1 335	
366.4	345.0	342.8	1.0 0.0 0.75 45.9	77.1 8.6 77.6 366.4	0.0 0.539 0.0 36.4 60.8 -18.7 63.7 342	
371.1	352.5	349.9	1.0 0.0 0.625 46.0	75.6 14.8 77.0 371.1	0.0 0.667 0.0 39.3 67.4 -12.4 68.5 349	
375.9	360.0	357.0	1.0 0.0 0.5 45.9	74.2 21.1 77.1 375.9	0.0 0.736 0.0 41.4 70.5 -9.7 71.1 352	
381.2	367.5	364.1	1.0 0.0 0.375 45.8	72.9 28.3 78.3 381.2	0.0 0.81 0.0 46.1 79.3 -0.1 79.3 359	
385.6	375.0	371.2	1.0 0.0 0.25 45.6	72.1 34.6 80.0 385.6	0.0 0.687 46.0 76.5 11.8 77.4 368	
389.3	382.5	378.3	1.0 0.0 0.125 45.5	71.4 40.1 81.9 389.3	0.0 0.485 45.9 74.1 22.0 77.3 376	
392.3	390.0	385.4	1.0 0.0 0.0 45.4	70.9 44.8 83.9 392.3	1.0 0.0 0.255 45.7 72.2 34.4 80.0 385	



se liggende filer: <http://130.149.60.45/~farbmetrik/RN58/RN58LONP.PDF> / .PS
teknisk informasjon: <http://www.ps.bam.de> eller <http://130.149.60.45/~farbmetrik>

TUB registrering: 20150701-RN58/RN58LONP.PDF /.PS
anvendelse for måling av offsettrykk output, separasjon cmy0 (CMY0)
TUB-material: code=rh4ta

Data til maksimalfargen M in fargemetrisk system Offset standard print; separation cmy0*, D65 for input eller output; Seks fargetonevinkler til 60 graders standardfargene RYGCMBs; hab,as = 30.0, 90.0, 150.0, 210.0, 270.0, 330.0; seks fargetonevinkler til apparatfargene RYGCMBd; hab,d = 32.3, 96.1, 155.5, 238.4, 306.2, 359.8; seks fargetonevinkler til elementærfargene RYGCMBc; hab,c = 25.5, 92.3, 162.2, 217.0, 271.7, 328.6

Table with 48 rows (32-86) and 48 columns (h_ab,d, h_ab,s, h_ab,e, rgb*dd361M, LAB*ddx361Mi, R_d, rgb*ds361Mi, LAB*dsx361Mi, R_s, rgb*dd361Mi, LAB*de361Mi, R_c, rgb*dd361Mi, rgb*dd, rgb*ds, rgb*de). Columns 16-18 are empty. The table contains numerical values for color measurements.

se liggende filer: http://130.149.60.45/~farbmetrik/RN58/RN58.HTM
teknisk informasjon: http://www.ps.bam.de eller http://130.149.60.45/~farbmetrik

TUB registrering: 20150701-RN58/RN58LONP.PDF /.PS
TUB-material: code=rhata4
anvendelse for måling av offsettrykk output, separasjon cmy0 (CMY0)

Data til maksimalfargen M in fargemetrisk system Offset standard print; separation cmy0*, D65 for input eller output; Seks fargetonevinkler til 60 graders standardfargene RYGCBM_S: h_{ab,ds} = 30.0, 90.0, 150.0, 210.0, 270.0, 330.0; seks fargetonevinkler til apparatfargene RYGCBM_d: h_{ab,d} = 32.3, 96.1, 155.5, 238.4, 306.2, 359.8; seks fargetonevinkler til elementærfargene RYGCBM_C: h_{ab,c} = 25.5, 92.3, 162.2, 217.0, 271.7, 328.6

Table with 12 columns of colorimetric data including h_{ab,d}, h_{ab,s}, h_{ab,e}, r_{gb}*, d_{sx361Mi}, LAB*, d_{dx361Mi} (x=LabCh), r_{gb}*, d_{sx361Mi}, LAB*, d_{dsx361Mi} (x=LabCh), r_{gb}*, d_{de361Mi}, LAB*, d_{dex361Mi} (x=LabCh), r_{gb}*, d_{dd361Mi}, and r_{gb}*, d_{de361Mi}. Rows 86-114 contain data for various color patches.



teknisk informasjon: http://130.149.60.45/~farbmetrik/RN58/RN58LONP.PDF /.PS se lignende filer: http://www.ps.bam.de eller http://130.149.60.45/~farbmetrik

TUB registrering: 20150701-RN58/RN58LONP.PDF /.PS anvendelse for måling av offsettrykk output, separasjon cmy0 (CMY0) TUB-material: code=rh4ta

Data til maksimalfargen M in fargemetrisk system Offset standard print; separation cmy0*, D65 for input eller output; Seks fargetonevinkler til 60 graders standardfargene RYGCBM_S; h_{ab,ds} = 30.0, 90.0, 150.0, 210.0, 270.0, 330.0; seks fargetonevinkler til apparatfargene RYGCBM_d; h_{ab,d} = 32.3, 96.1, 155.5, 238.4, 306.2, 359.8; seks fargetonevinkler til elementærfargene RYGCBM_e; h_{ab,e} = 25.5, 92.3, 162.2, 217.0, 271.7, 328.6

Table with columns for h_{ab,d}, h_{ab,s}, h_{ab,e}, and various colorimetric parameters (LAB*, dsx361Mi, rgb*, etc.) for 167 rows of color data.

5-0131131-L0 RN580-71 LAB*la0, YN=0%, XYZnw=3.6, 4.2, 6.1, 85.4, 89.1, 104.8, LAB*nw=24.4, 0.0, 0.0, 95.6, 0.0, 0.0

output: Offset standard print; separation cmy0*, D65, side 12/33

TUB-prøveplansje RN58; 1080 standard farger 48-trinns fargetonesirkel; rgb-LabCh*tabeller

input: rgb/cmyk -> rgb_e output: overføring til cmy0_e

teknisk informasjon: http://130.149.60.45/~farbmetrik/RN58/RN58LONP.PDF /.PS se liggende filer: http://www.ps.bam.de eller http://130.149.60.45/~farbmetrik

TUB registrering: 20150701-RN58/RN58LONP.PDF /.PS anvendelse for måling av offsettrykk output, separasjon cmy0 (CMY0) TUB-material: code=rh4ta

Data til maksimalfargen M in fargemetrisk system Offset standard print; separation cmy0*, D65 for input eller output; Seks fargetonevinkler til 60 graders standardfargene RYGCMB_S; h_{ab,ds} = 30.0, 90.0, 150.0, 210.0, 270.0, 330.0; seks fargetonevinkler til apparatfargene RYGCMB_L; h_{ab,d} = 32.3, 96.1, 155.5, 238.4, 306.2, 359.8; seks fargetonevinkler til elementærfargene RYGCMB_C; h_{ab,e} = 25.5, 92.3, 162.2, 217.0, 271.7, 328.6

Table with 30 columns: h_{ab,d}, h_{ab,s}, h_{ab,e}, r_{gb}^{*}dd361M, LAB^{*}ddx361Mi (x=LabCh), r_{gb}^{*}ds361Mi, LAB^{*}dsx361Mi (x=LabCh), r_{gb}^{*}dd361Mi, LAB^{*}de361Mi, dex361Mi (x=LabCh), r_{gb}^{*}dd361Mi, r_{gb}^add, r_{gb}^sds, r_{gb}^ede. Rows 167-238.

5-0131231-L0 RN580-71 LAB*la0, YN=0%, XYZnw=3.6, 4.2, 6.1, 85.4, 89.1, 104.8, LAB*nw=24.4, 0.0, 0.0, 95.6, 0.0, 0.0

output: Offset standard print; separation cmy0*, D65, side 13/33

TUB-prøveplansje RN58; 1080 standard farger 48-trinns fargetonesirkel; r_{gb}-LabCh*tabeller

input: r_{gb}/cmyk -> r_{gb}_e output: overføring til cmy0_e

teknisk informasjon: http://130.149.60.45/~farbmetrik/RN58/RN58LONP.PDF /.PS se lignende filer: http://130.149.60.45/~farbmetrik/RN58/RN58LONP.PDF /.PS http://www.ps.bam.de eller http://130.149.60.45/~farbmetrik

TUB registrering: 20150701-RN58/RN58LONP.PDF /.PS anvendelse for måling av offsettrykk output, separasjon cmy0 (CMY0) TUB-material: code=rhata4

Data til maksimalfargen M in fargemetrisk system Offset standard print; separation cmy0*, D65 for input eller output; Seks fargetonevinkler til 60 graders standardfargene RYGCMB_s: h_{ab,ds} = 30.0, 90.0, 150.0, 210.0, 270.0, 330.0; seks fargetonevinkler til apparatfargene RYGCMB_c: h_{ab,d} = 32.3, 96.1, 155.5, 238.4, 306.2, 359.8; seks fargetonevinkler til elementærfargene RYGCMB_c: h_{ab,e} = 25.5, 92.3, 162.2, 217.0, 271.7, 328.6

Table with 18 columns: h_{ab,d}, h_{ab,s}, h_{ab,e}, r_{gb}*_dd361M, LAB*_*ddx361Mi (x=LabCh), r_{gb}*_*ds361Mi, LAB*_*dsx361Mi (x=LabCh), r_{gb}*_*dd361Mi, r_{gb}*_*de361Mi, LAB*_*dex361Mi (x=LabCh), r_{gb}*_*dd361Mi, r_{gb}*_*dd361Mi, r_{gb}*_*dd361Mi, r_{gb}*_*dd361Mi, r_{gb}*_*dd361Mi, r_{gb}*_*dd361Mi, r_{gb}*_*dd361Mi, r_{gb}*_*dd361Mi. Rows 289-340.

se tilgjengelige filer: http://130.149.60.45/~farbmetrik/RN58/RN58LONP.PDF /.PS teknisk informasjon: http://www.ps.bam.de eller http://130.149.60.45/~farbmetrik

TUB registrering: 20150701-RN58/RN58LONP.PDF /.PS anvendelse for måling av offsettrykk output, separasjon cmy0 (CMY0) TUB-material: code=rh4ta



Data til maksimalfargen M i fargemetrisk system Offset standard print; separation cmy0*, D65 for input eller output; Seks fargetonevinkler til 60 graders standardfargene RYGBM_S; h_{ab,ds} = 30.0, 90.0, 150.0, 210.0, 270.0, 330.0; seks fargetonevinkler til apparatfargene RYGBM_d; h_{ab,d} = 32.3, 96.1, 155.5, 238.4, 306.2, 359.8; seks fargetonevinkler til elementærfargene RYGBM_C; h_{ab,c} = 25.5, 92.3, 162.2, 217.0, 271.7, 328.6

Table with columns for color coordinates (h_{ab,d}, h_{ab,s}, h_{ab,e}, etc.) and color names (M_d, M_s, M_c). The table contains 366 rows of data.



teknisk informasjon: http://www.ps.bam.de eller http://130.149.60.45/~farbmetrik

TUB registrering: 20150701-RN58/RN58LONP.PDF /.PS anvendelse for måling av offsettrykk output, separasjon cmy0 (CMY0) TUB-material: code=rh4ta

Data til maksimalfargen M in fargemetrisk system Offset standard print; separation cmy0*, D65 for input eller output; Seks fargetonevinkler til 60 graders standardfargene RYGCBM_S; h_{ab,ds} = 30.0, 90.0, 150.0, 210.0, 270.0, 330.0; seks fargetonevinkler til apparatfargene RYGCBM_d; h_{ab,d} = 32.3, 96.1, 155.5, 238.4, 306.2, 359.8; seks fargetonevinkler til elementærfargene RYGCBM_c; h_{ab,c} = 25.5, 92.3, 162.2, 217.0, 271.7, 328.6

Table with columns: h_{ab,d}, h_{ab,s}, h_{ab,e}, rgb*_{dd361M}, LAB*_{dsx361Mi} (x=LabCh), rgb*_{ds361Mi}, LAB*_{dsx361Mi} (x=LabCh), rgb*_{dd361Mi}, rgb*_{dc361Mi}, LAB*_{dex361Mi} (x=LabCh), rgb*_{dd361Mi}, and a color bar with columns rgb*_{dd}, rgb*_{ds}, rgb*_{dc}. Rows 366-392.

5-0131631-L0 RN580-71 LAB*la0, YN=0%, XYZnw=3.6, 4.2, 6.1, 85.4, 89.1, 104.8, LAB*nw=24.4, 0.0, 0.0, 95.6, 0.0, 0.0

output: Offset standard print; separation cmy0*, D65, side 17/33

TUB-prøveplansje RN58; 1080 standard farger 48-trinns fargetonesirkel; rgb-LabCh*tabeller

input: rgb/cmyk -> rgb_e output: overføring til cmy0_e

se liggende filer: http://130.149.60.45/~farbmetrik/RN58/RN58LONP.PDF /PS teknisk informasjon: http://www.ps.bam.de eller http://130.149.60.45/~farbmetrik

TUB registrering: 20150701-RN58/RN58LONP.PDF /.PS anvendelse for måling av offsettrykk output, separasjon cmy0 (CMY0) TUB-material: code=rh4ta

http://130.149.60.45/~farbmetrik/RN58/RN58LONP.PDF /.PS; overføring output N: ingen 3D-linearisering (OL) i fil (F) eller PS-startup (S), side 25/33

input: rgb/cmyk -> rgbe output: overføring til cmy0e

Table with columns n, HHC*Fe, rpb*Fe, iet*Fe, hsa*Fe, rpb*Fe, LabCh*Fe, LabCh*Fe, rpb*Fe, DF*Fe, rpb*Fe, HaM*Fe, LabCh*Fe, rpb*Fe, and values. It contains 48 rows of data for different color patches.

RN580-7N_25/33-F

TUB-prøveplansje RN58; 1080 standard farger farger og fargeavstander, ΔE*

5-0132431-F

http://130.149.60.45/~farbmetrik/RN58/RN58LONP.PDF /.PS; overføring output N: ingen 3D-linearisering (OL) i fil (F) eller PS-startup (S), side 26/33

Table with columns: n, HHC*Fe, rpb*Fe, icr*Fe, hsa*Fe, rpb*Fe, LabCH*Fe, LabCH*Fe, rpb*Fe, LabCH*Fe, DF*Fe, Hsa*Fe, rpb*Fe, LabCH*Fe, LabCH*Fe, rpb*Fe, LabCH*Fe. Rows include color codes like R00Y, R00M, R00C, etc.

5-013251-F0

RN580-7N_26/33-F

delta E* = 14.5

TUB-prøveplansje RN58; 1080 standard farger farger og fargeavstander, ΔE*

input: rgb/cmyk -> rgb output: overføring til cmy0e

5-013251-F0

RN580-7N_26/33-F

delta E* = 14.5

input: rgb/cmyk -> rgb output: overføring til cmy0e

http://130.149.60.45/~farbmetrik/RN58/RN58L0NP.PDF /.PS; overføring output
N: ingen 3D-linearisering (OL) i fil (F) eller PS-startup (S), side 33/33

n	HHC*Fe	rgb*Fe	iet*Fe	hsa*Fe	rgb*Fe	LabCH*Fe	hsa*Fe	LabCH*Fe	rgb*Fe	DF*Fe	hsa*Fe	rgb*Fe	LabCH*Fe	hsa*Fe	DF*Fe	hsa*Fe	rgb*Fe	LabCH*Fe
1053	NW_086e	0.866	0.866	0.866	0.866	0.866	0.866	0.866	0.866	0.866	0.866	0.866	0.866	0.866	0.866	0.866	0.866	0.866
1054	NW_093e	0.933	0.933	0.933	0.933	0.933	0.933	0.933	0.933	0.933	0.933	0.933	0.933	0.933	0.933	0.933	0.933	0.933
1055	NW_100e	1.0	1.0	1.0	1.0	1.0	1.0	1.0	1.0	1.0	1.0	1.0	1.0	1.0	1.0	1.0	1.0	1.0
1056	NW_006e	0.066	0.066	0.066	0.066	0.066	0.066	0.066	0.066	0.066	0.066	0.066	0.066	0.066	0.066	0.066	0.066	0.066
1057	NW_013e	0.133	0.133	0.133	0.133	0.133	0.133	0.133	0.133	0.133	0.133	0.133	0.133	0.133	0.133	0.133	0.133	0.133
1058	NW_020e	0.2	0.2	0.2	0.2	0.2	0.2	0.2	0.2	0.2	0.2	0.2	0.2	0.2	0.2	0.2	0.2	0.2
1059	NW_026e	0.266	0.266	0.266	0.266	0.266	0.266	0.266	0.266	0.266	0.266	0.266	0.266	0.266	0.266	0.266	0.266	0.266
1060	NW_033e	0.333	0.333	0.333	0.333	0.333	0.333	0.333	0.333	0.333	0.333	0.333	0.333	0.333	0.333	0.333	0.333	0.333
1061	NW_040e	0.4	0.4	0.4	0.4	0.4	0.4	0.4	0.4	0.4	0.4	0.4	0.4	0.4	0.4	0.4	0.4	0.4
1062	NW_046e	0.466	0.466	0.466	0.466	0.466	0.466	0.466	0.466	0.466	0.466	0.466	0.466	0.466	0.466	0.466	0.466	0.466
1063	NW_053e	0.533	0.533	0.533	0.533	0.533	0.533	0.533	0.533	0.533	0.533	0.533	0.533	0.533	0.533	0.533	0.533	0.533
1064	NW_059e	0.599	0.599	0.599	0.599	0.599	0.599	0.599	0.599	0.599	0.599	0.599	0.599	0.599	0.599	0.599	0.599	0.599
1065	NW_066e	0.666	0.666	0.666	0.666	0.666	0.666	0.666	0.666	0.666	0.666	0.666	0.666	0.666	0.666	0.666	0.666	0.666
1066	NW_073e	0.734	0.734	0.734	0.734	0.734	0.734	0.734	0.734	0.734	0.734	0.734	0.734	0.734	0.734	0.734	0.734	0.734
1067	NW_080e	0.8	0.8	0.8	0.8	0.8	0.8	0.8	0.8	0.8	0.8	0.8	0.8	0.8	0.8	0.8	0.8	0.8
1068	NW_086e	0.866	0.866	0.866	0.866	0.866	0.866	0.866	0.866	0.866	0.866	0.866	0.866	0.866	0.866	0.866	0.866	0.866
1069	NW_093e	0.933	0.933	0.933	0.933	0.933	0.933	0.933	0.933	0.933	0.933	0.933	0.933	0.933	0.933	0.933	0.933	0.933
1070	NW_100e	1.0	1.0	1.0	1.0	1.0	1.0	1.0	1.0	1.0	1.0	1.0	1.0	1.0	1.0	1.0	1.0	1.0
1071	NW_006e	0.066	0.066	0.066	0.066	0.066	0.066	0.066	0.066	0.066	0.066	0.066	0.066	0.066	0.066	0.066	0.066	0.066
1072	NW_013e	0.133	0.133	0.133	0.133	0.133	0.133	0.133	0.133	0.133	0.133	0.133	0.133	0.133	0.133	0.133	0.133	0.133
1073	NW_020e	0.2	0.2	0.2	0.2	0.2	0.2	0.2	0.2	0.2	0.2	0.2	0.2	0.2	0.2	0.2	0.2	0.2
1074	ROY_100_100e	1.0	0.0	1.0	1.0	0.0	0.0	1.0	1.0	0.0	0.0	0.0	0.0	1.0	1.0	0.0	0.0	0.0
1075	GS0B_100_100e	0.0	1.0	1.0	0.0	1.0	0.0	0.0	0.0	1.0	1.0	0.0	0.0	0.0	0.0	1.0	1.0	0.0
1076	Y06C_100_100e	0.0	1.0	0.0	1.0	0.0	0.0	0.0	0.0	0.0	0.0	0.0	0.0	0.0	0.0	0.0	0.0	0.0
1077	B06M_100_100e	0.0	0.0	1.0	0.0	0.0	0.0	0.0	0.0	0.0	0.0	0.0	0.0	0.0	0.0	0.0	0.0	0.0
1078	B08L_100_100e	0.0	0.0	1.0	0.0	0.0	0.0	0.0	0.0	0.0	0.0	0.0	0.0	0.0	0.0	0.0	0.0	0.0
1079	B50R_100_100e	1.0	0.0	1.0	1.0	0.0	0.0	0.0	0.0	0.0	0.0	0.0	0.0	0.0	0.0	0.0	0.0	0.0

input: rgb/cmyk -> rgbe
output: overføring til cmy0e

TUB-prøveplansje RN58; 1080 standard farger
farger og fargeavstander, ΔE*

5-013321-I-F0

5-013321-I-F0