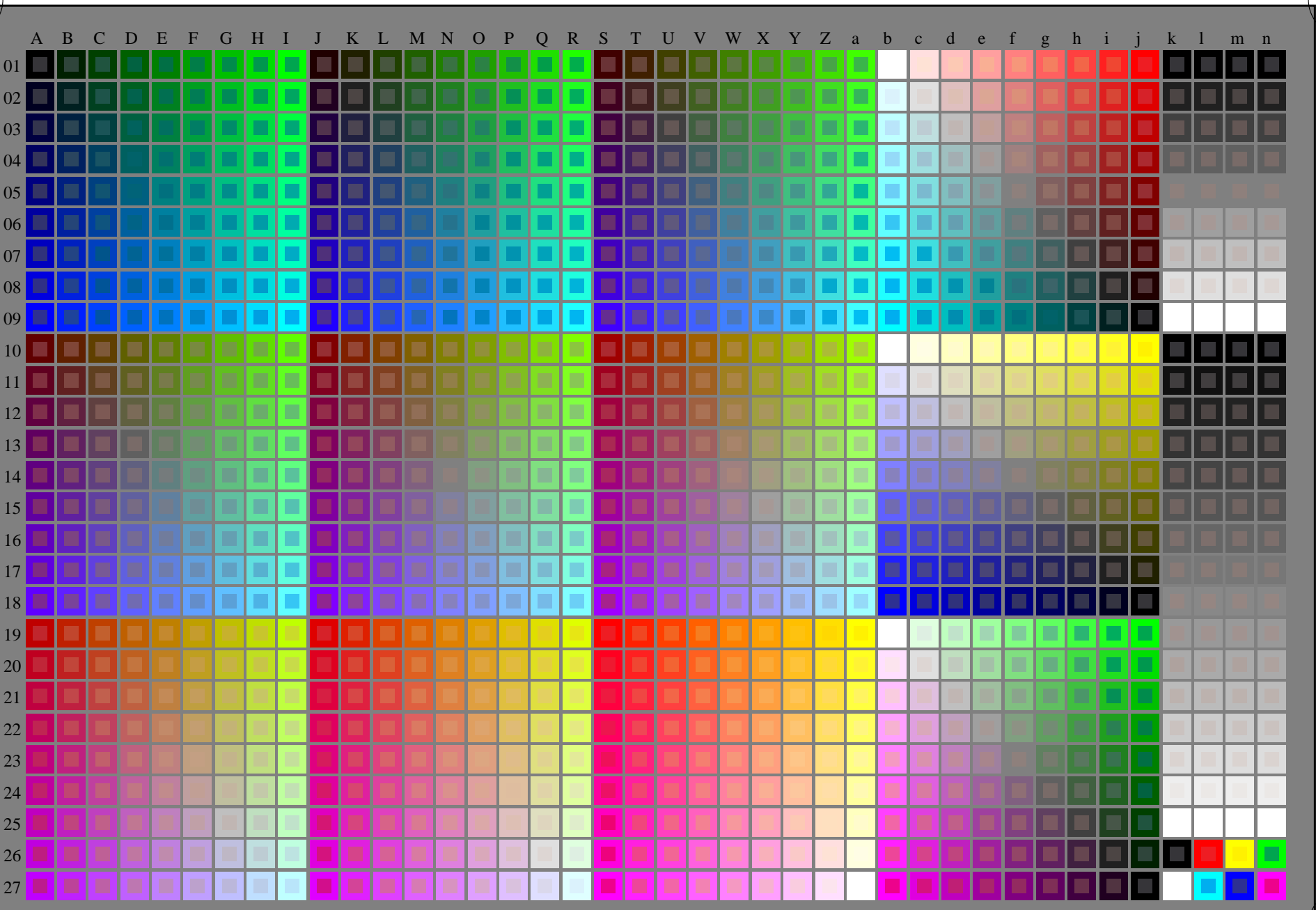


http://130.149.60.45/~farbmetrik/RN56/RN56L0NA.TXT /.PS; start output
N: ingen 3D-linearisering (OL) i fil (F) eller PS-startup (S), side 1/2

se lignende filer: <http://130.149.60.45/~farbmetrik/RN56/RN56.HTM>
teknisk informasjon: <http://www.ps.bam.de> eller <http://130.149.60.45/~farbmetrik>

TUB registrering: 20150701-RN56/RN56L0NA.TXT /.PS
anvendelse for måling av offsettrykk output

TUB-material: code=rh4ta

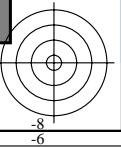
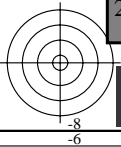


5-003031-L0 RN560-7N

rgb + cmy0 (A_j + k26_n27), 000n (k), w (l), nnn0 (m), www (n), 3D=0

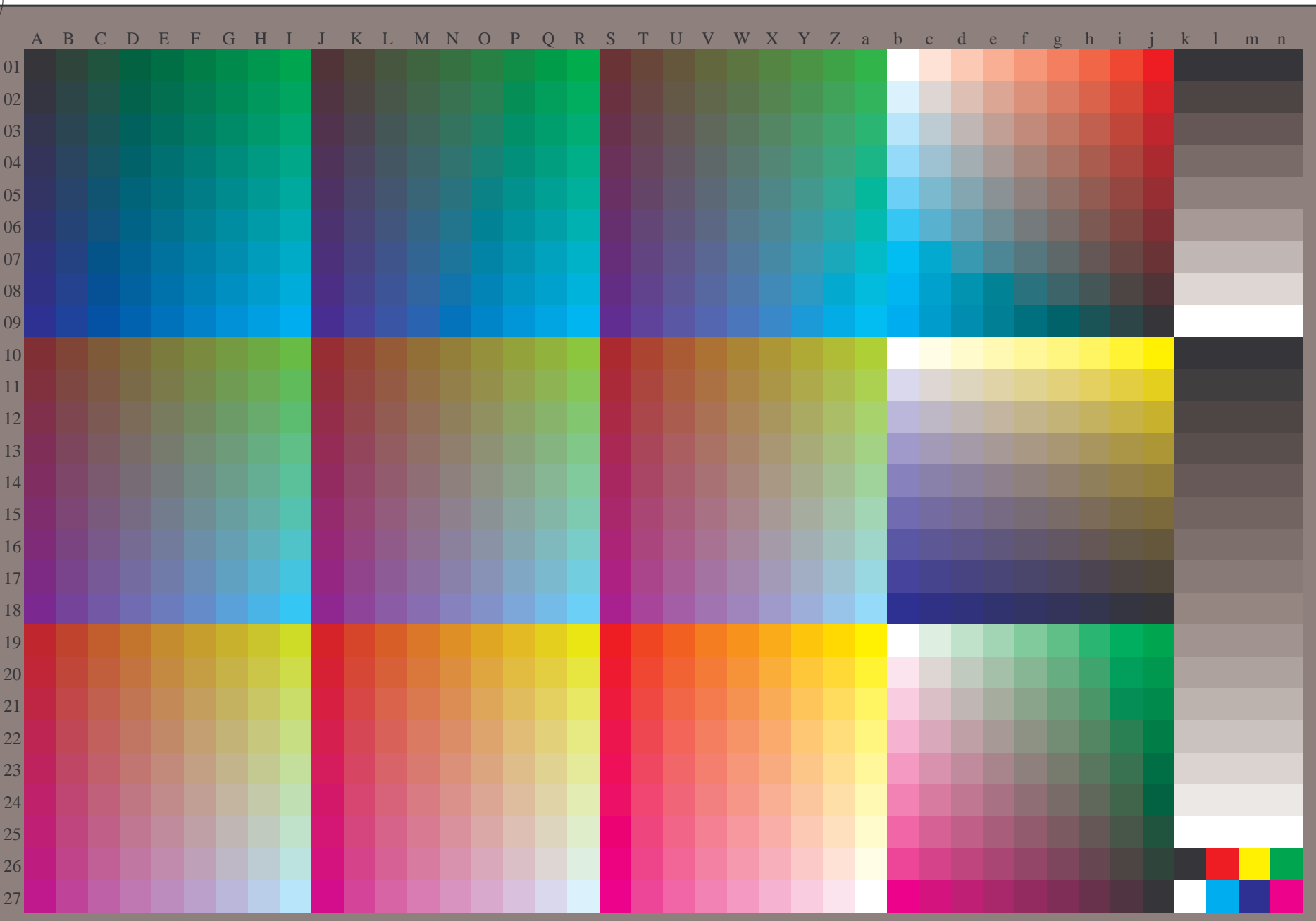
TUB-prøveplansje RN56; 1080 standard farger
prøveplansje infølge DIN 33872, 3D=0, de=0, cmy0

input: *rgb/cmyk* -> *rgb/cmyk*
output: ingen endring



se lignende filer: <http://130.149.60.45/~farbmetrik/RN56/RN56.HTM>
teknisk informasjon: <http://www.ps.bam.de> eller <http://130.149.60.45/~farbmetrik>

TUB registrering: 20150701-RN56/RN56L0NA.TXT /.PS
anvendelse for måling av offsettrykk output, separasjon cmy0 (CMY0)
TUB-material: code=rh4ta



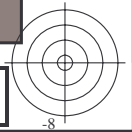
5-003131-L0 RN560-70

rgb (A_n), 3D=0

TUB-prøveplansje RN56; 1080 standard farger
prøveplansje infølge DIN 33872, 3D=0, de=0, cmy0

input: *rgb/cmyk* -> *rgb_d*
output: overføring til *cmy0_d*

5-003131-F0

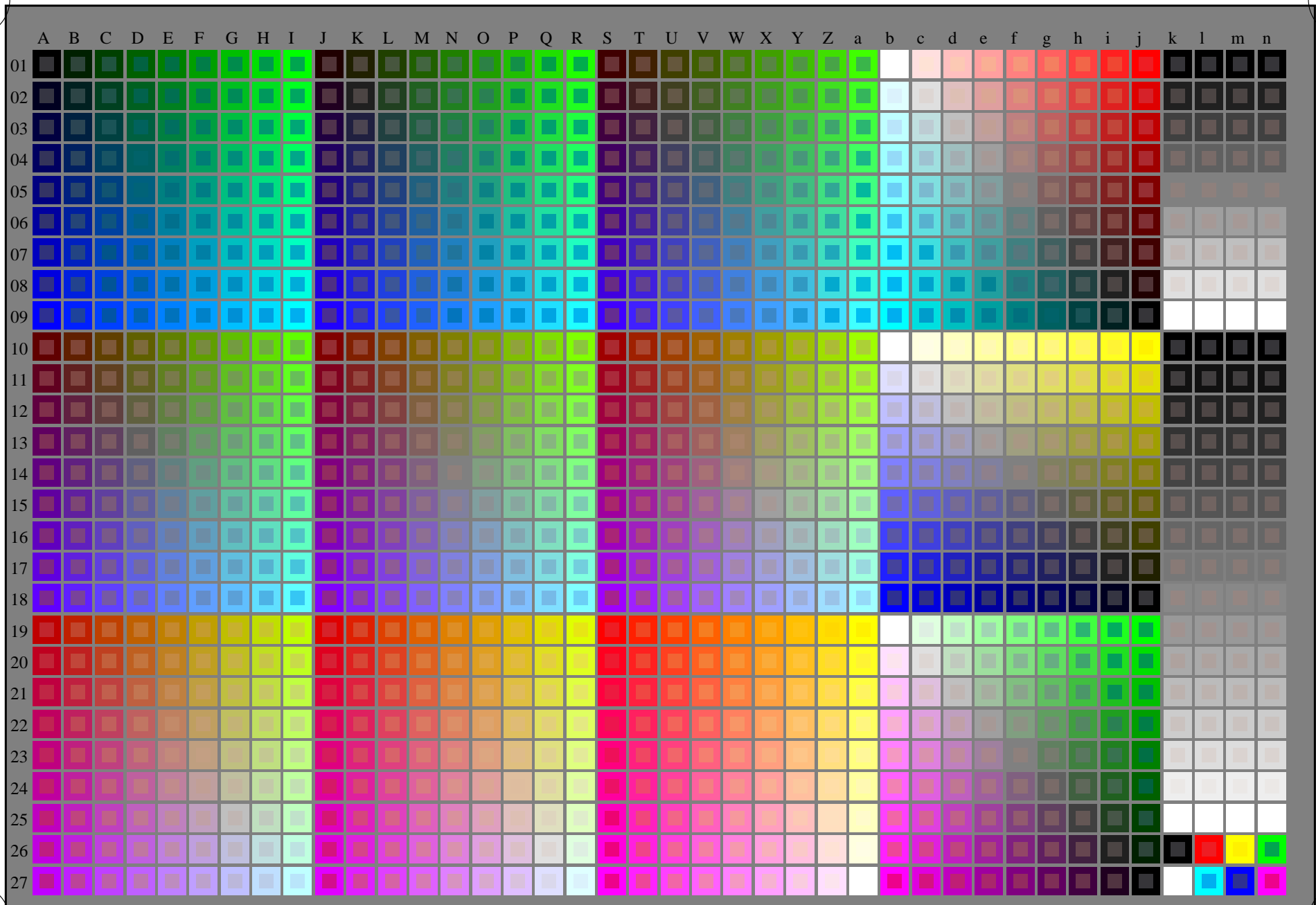


http://130.149.60.45/~farbmetrik/RN56/RN56L0NA.TXT /.PS; start output
N: ingen 3D-linearisering (OL) i fil (F) eller PS-startup (S), side 1/2

se lignende filer: <http://130.149.60.45/~farbmetrik/RN56/RN56.HTM>
teknisk informasjon: <http://www.ps.bam.de> eller <http://130.149.60.45/~farbmetrik>

TUB registrering: 20150701-RN56/RN56L0NA.TXT /.PS
anvendelse for måling av offsettrykk output

TUB-material: code=rh4ta

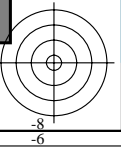
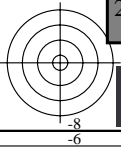


5-013031-L0 RN560-7N

rgb + cmy0 (A_j + k26_n27), 000n (k), w (l), nnn0 (m), www (n), 3D=0

TUB-prøveplansje RN56; 1080 standard farger
prøveplansje infølge DIN 33872, 3D=0, de=1, cmy0

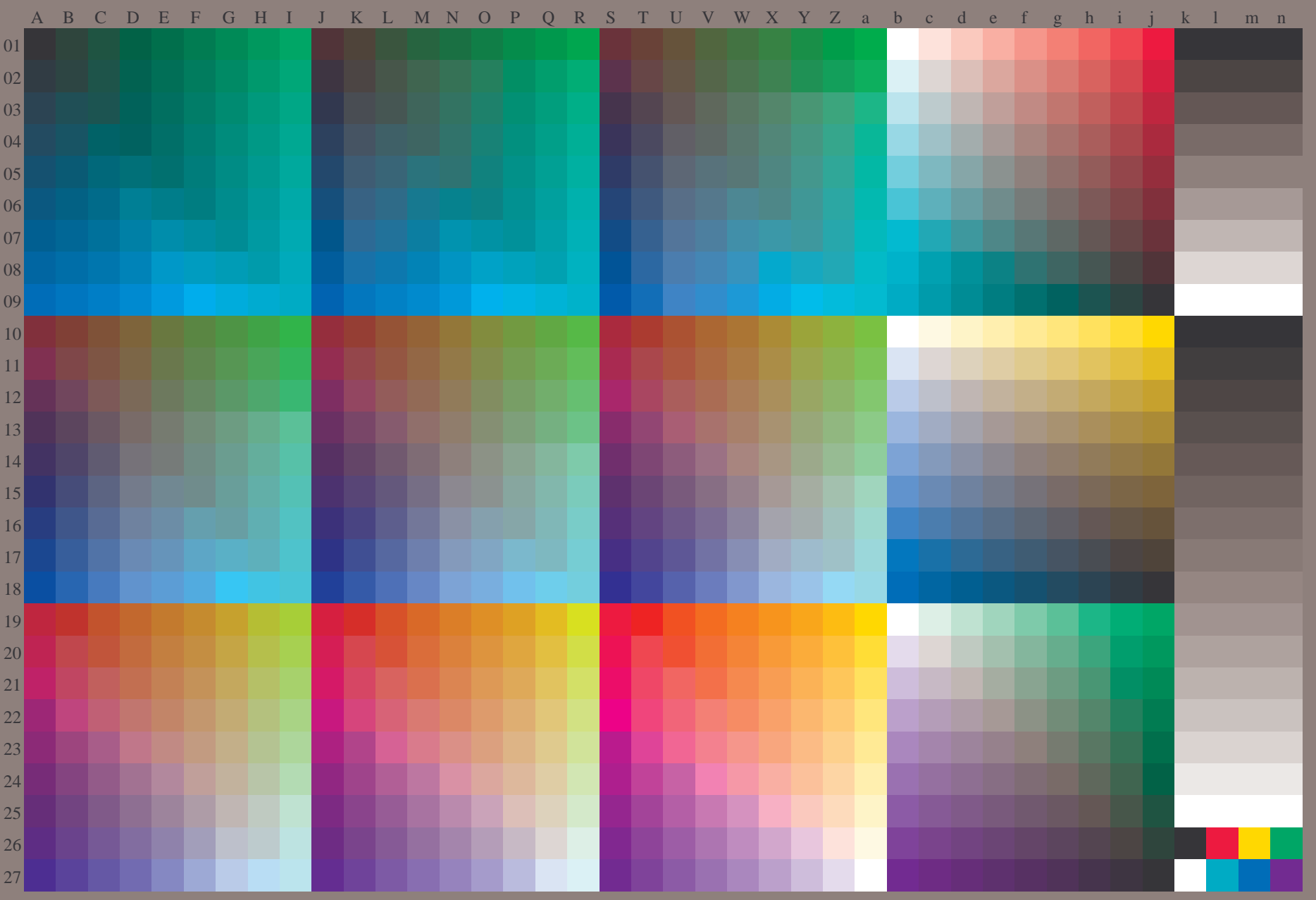
input: *rgb/cmyk* -> *rgb/cmyk*
output: ingen endring



se lignende filer: <http://130.149.60.45/~farbmetrik/RN56/RN56.HTM>
teknisk informasjon: <http://www.ps.bam.de> eller <http://130.149.60.45/~farbmetrik>

TUB registrering: 20150701-RN56/RN56L0NA.TXT /.PS
anvendelse for måling av offsettrykk output, separasjon cmy0 (CMY0)

TUB-material: code=rh4ta



5-013131-L0 RN560-71

rgb (A_n), 3D=0

TUB-prøveplansje RN56; 1080 standard farger
prøveplansje infølge DIN 33872, 3D=0, de=1, cmy0

input: *rgb/cmyk* -> *rgb_e*
output: overføring til *cmy0_e*

5-013131-F0

C M Y O L V