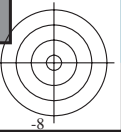
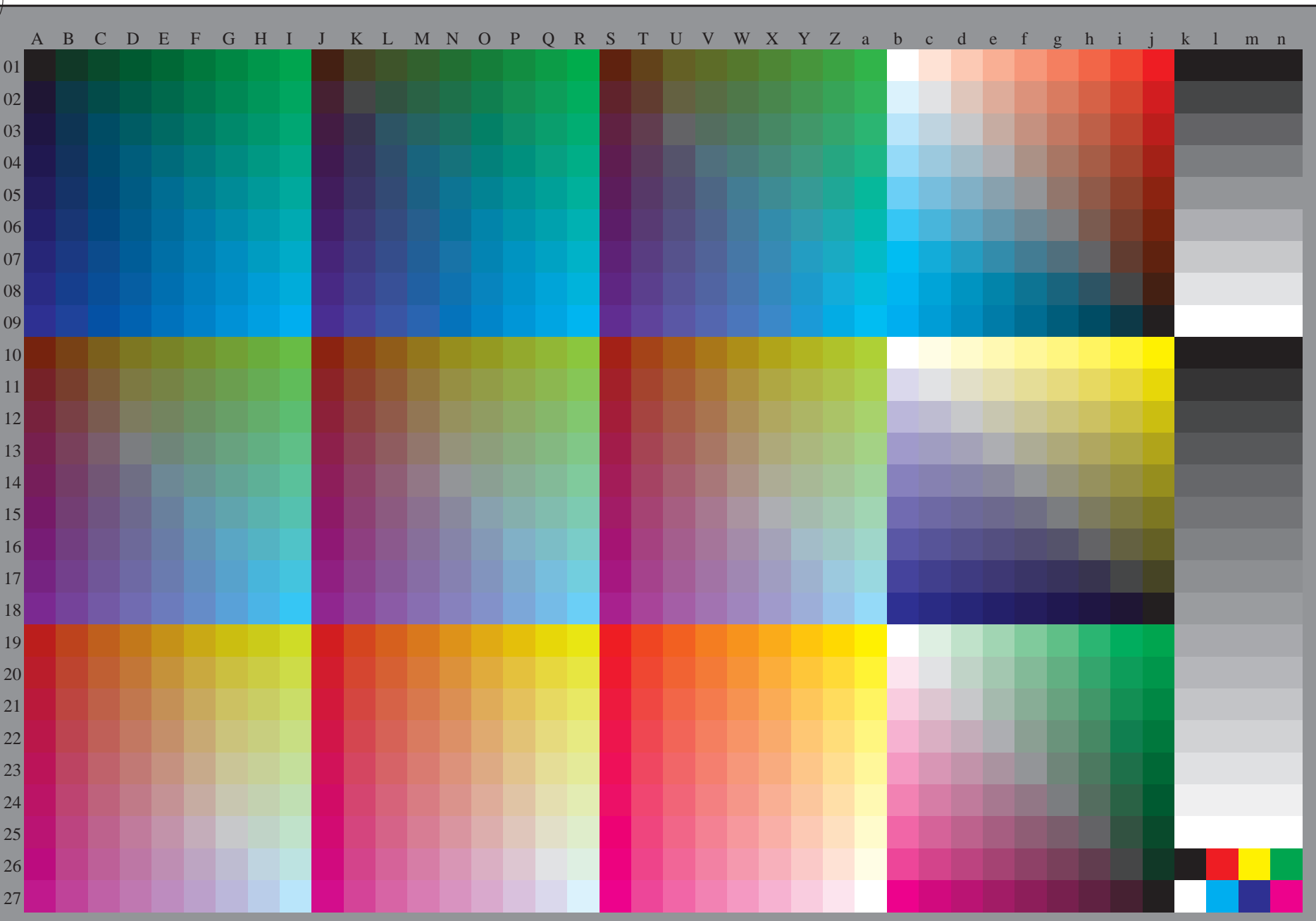


se lignende filer: <http://130.149.60.45/~farbmetrik/RN53/RN53.HTM>
teknisk informasjon: <http://www.ps.bam.de> eller <http://130.149.60.45/~farbmetrik>

TUB registrering: 20150701-RN53/RN53L0NP.PDF /.PS TUB-material: code=rh4ta
anvendelse for måling av offsettrykk output, separasjon cmykn6 (CMYK)



5-003130-L0 RN530-70

rgb (A_n), 3D=0

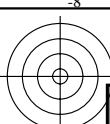
TUB-prøveplansje RN53; 1080 standard farger
prøveplansje infølge DIN 33872, 3D=0, de=0, cmyk

input: *rgb/cmyk* -> *rgb_d*
output: overføring til *cmyk_d*

5-003130-F0

C M Y O L V

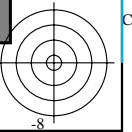
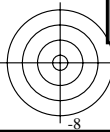
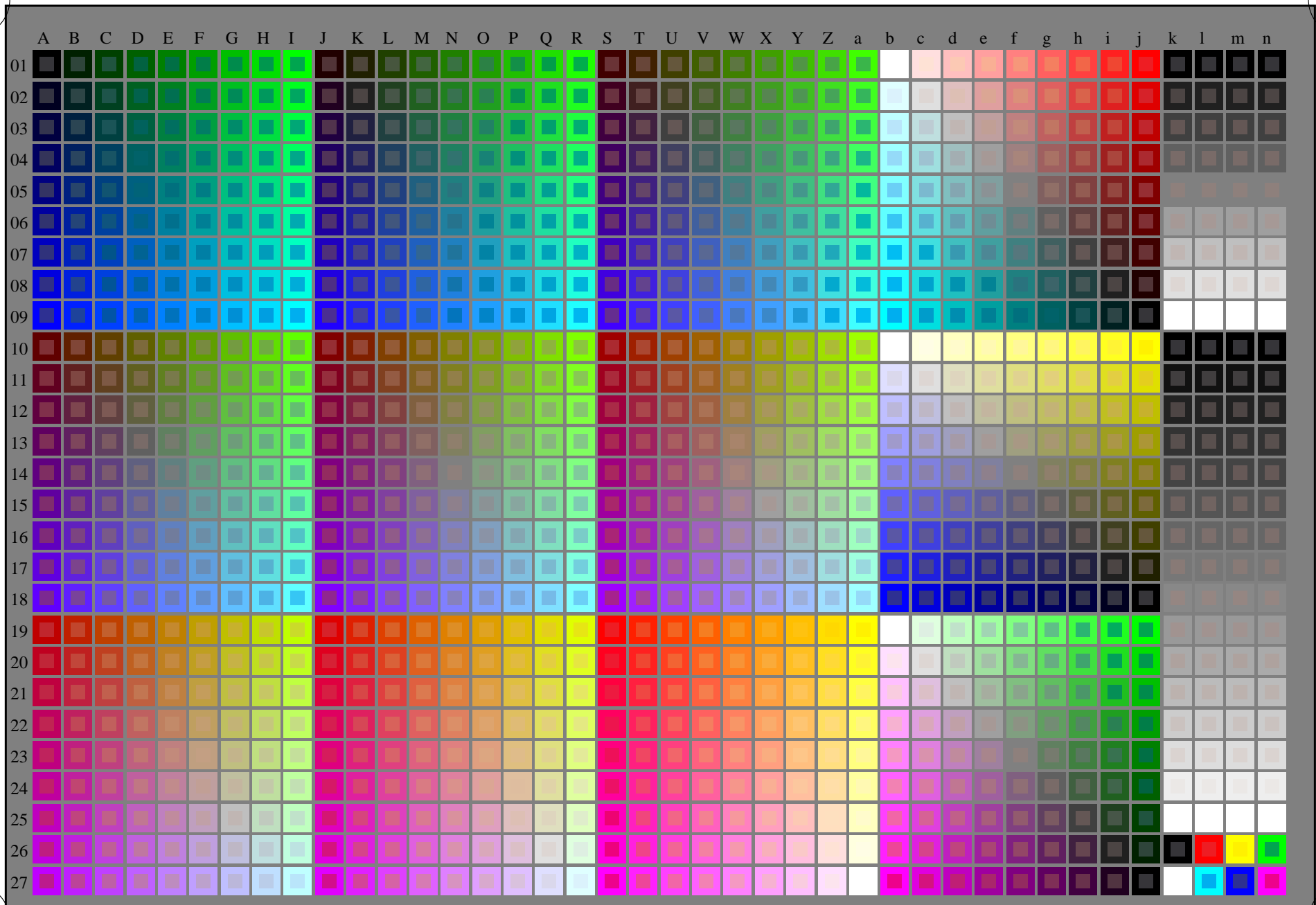
http://130.149.60.45/~farbmetrik/RN53/RN53LONP.PDF /.PS; start output
N: ingen 3D-linearisering (OL) i fil (F) eller PS-startup (S), side 1/2



se lignende filer: <http://130.149.60.45/~farbmetrik/RN53/RN53.HTM>
teknisk informasjon: <http://www.ps.bam.de> eller <http://130.149.60.45/~farbmetrik>

TUB registrering: 20150701-RN53/RN53LONP.PDF /.PS
anvendelse for måling av offsettrykk output

TUB-material: code=rh4ta



5-013030-L0 RN530-7N

rgb + cmy0 (A..j + k26..n27), 000n (k), w (l), nnn0 (m), www (n), 3D=0

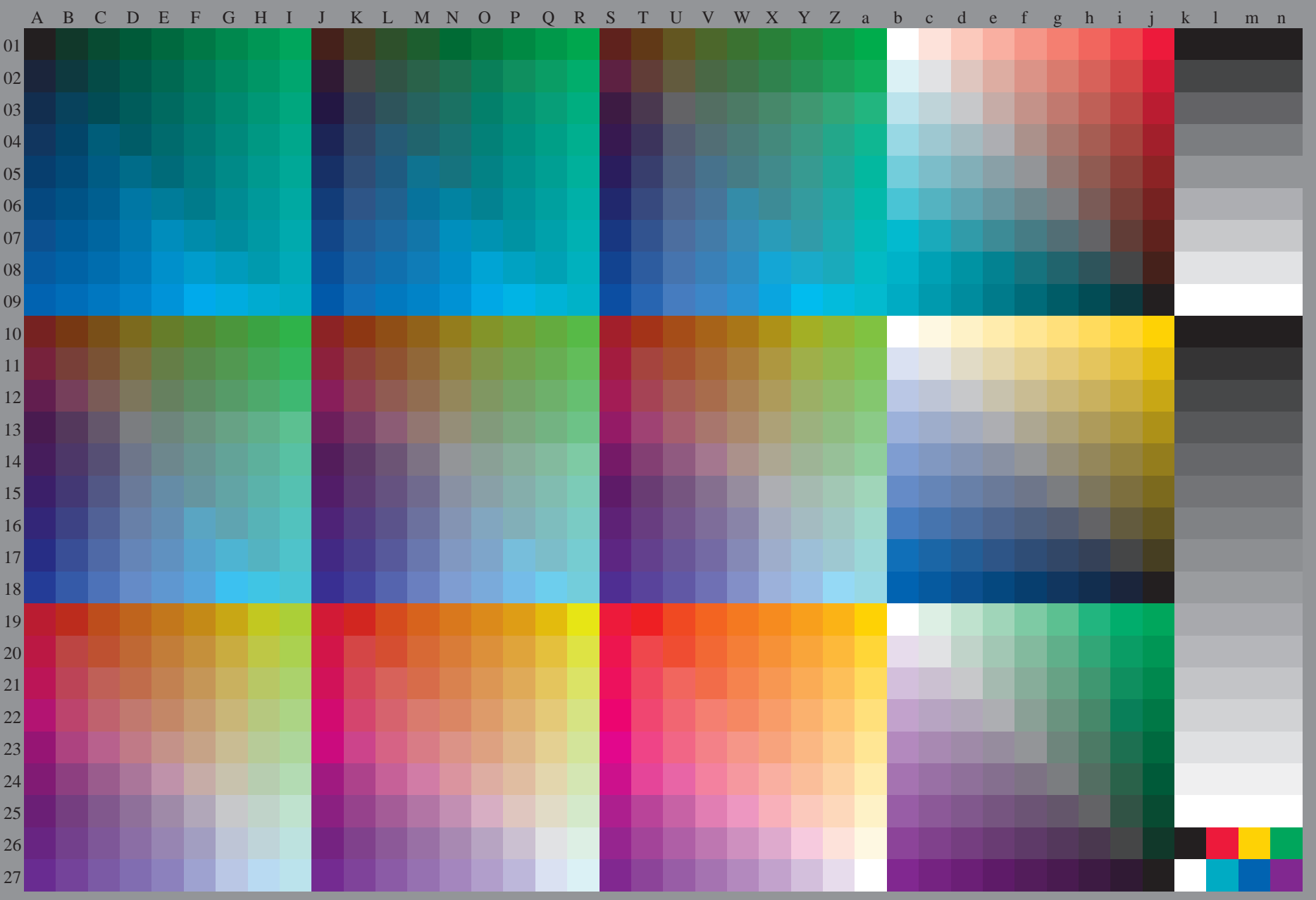
TUB-prøveplansje RN53; 1080 standard farger
prøveplansje infølge DIN 33872, 3D=0, de=1, cmyk

input: *rgb/cmyk* -> *rgb/cmyk*
output: ingen endring



se lignende filer: <http://130.149.60.45/~farbmetrik/RN53/RN53.HTM>
teknisk informasjon: <http://www.ps.bam.de> eller <http://130.149.60.45/~farbmetrik>

TUB registrering: 20150701-RN53/RN53L0NP.PDF /.PS TUB-material: code=rh4ta
anvendelse for måling av offsettrykk output, separasjon cmyk6 (CMYK)



5-013130-L0 RN530-71

rgb (A_n), 3D=0

TUB-prøveplansje RN53; 1080 standard farger
prøveplansje infølge DIN 33872, 3D=0, de=1, cmyk

input: $rgb/cmyk \rightarrow rgb_e$
output: overføring til $cmyk_e$

5-013130-F0

C M Y O L V