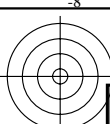
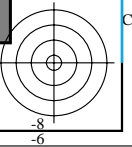
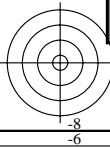
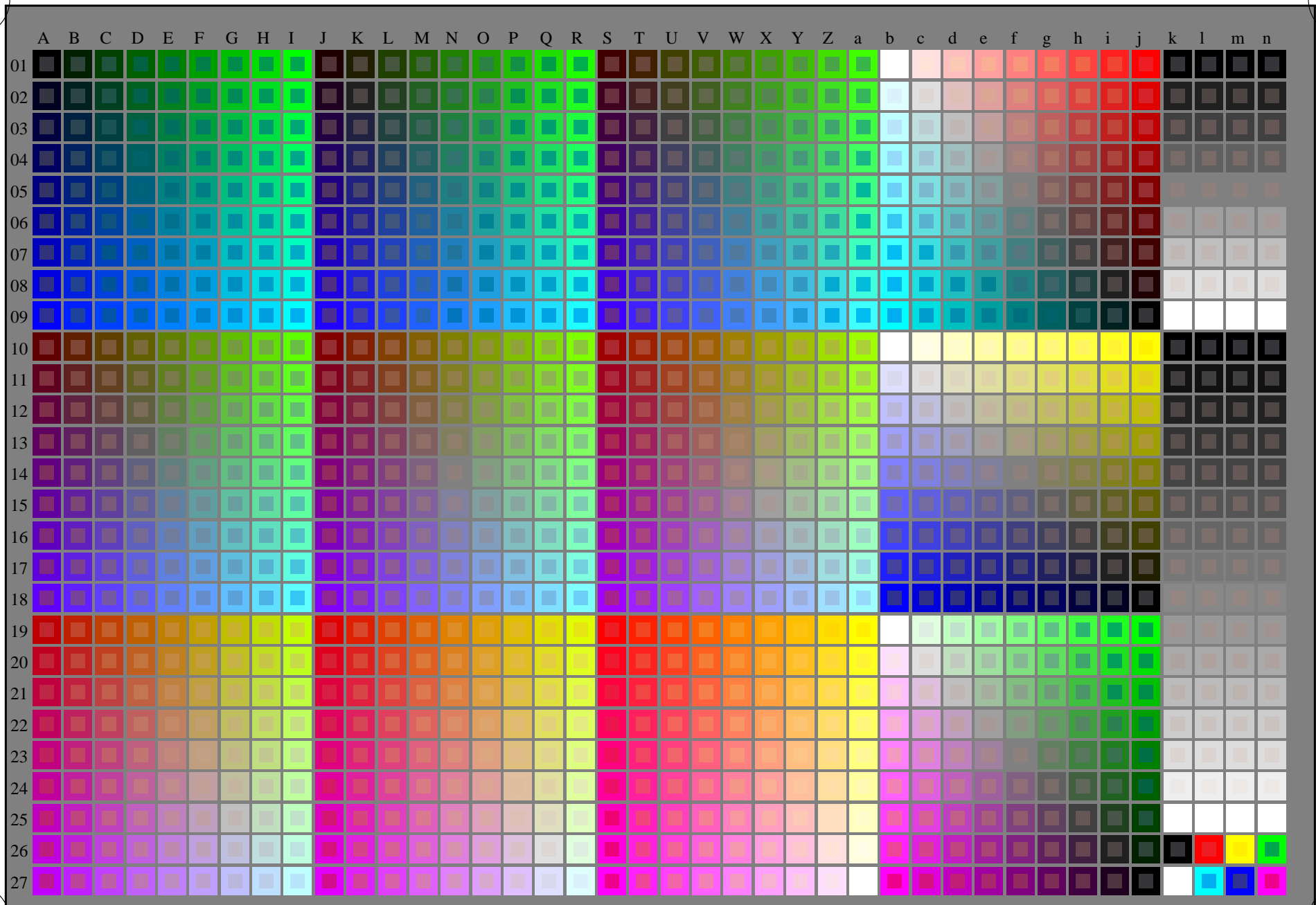


http://130.149.60.45/~farbmetrik/RN53/RN53L0FP.PDF /.PS; start output  
F: 3D-linearisering RN53/RN53LJ30FP.DAT i fil (F), side 1/2



se lignende filer: <http://130.149.60.45/~farbmetrik/RN53/RN53.HTM>  
teknisk informasjon: <http://www.ps.bam.de> eller <http://130.149.60.45/~farbmetrik>

TUB registrering: 20150701-RN53/RN53L0FP.PDF /.PS  
anvendelse for måling av offsettrykk output  
TUB-material: code=rh4ta



5-103030-L0 RN530-7N

rgb + cmy0 (A..j + k26..n27), 000n (k), w (l), nnn0 (m), www (n), 3D=1

TUB-prøveplansje RN53; 1080 standard farger  
prøveplansje infølge DIN 33872, 3D=1, de=0, cmyk\*

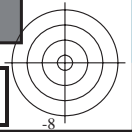
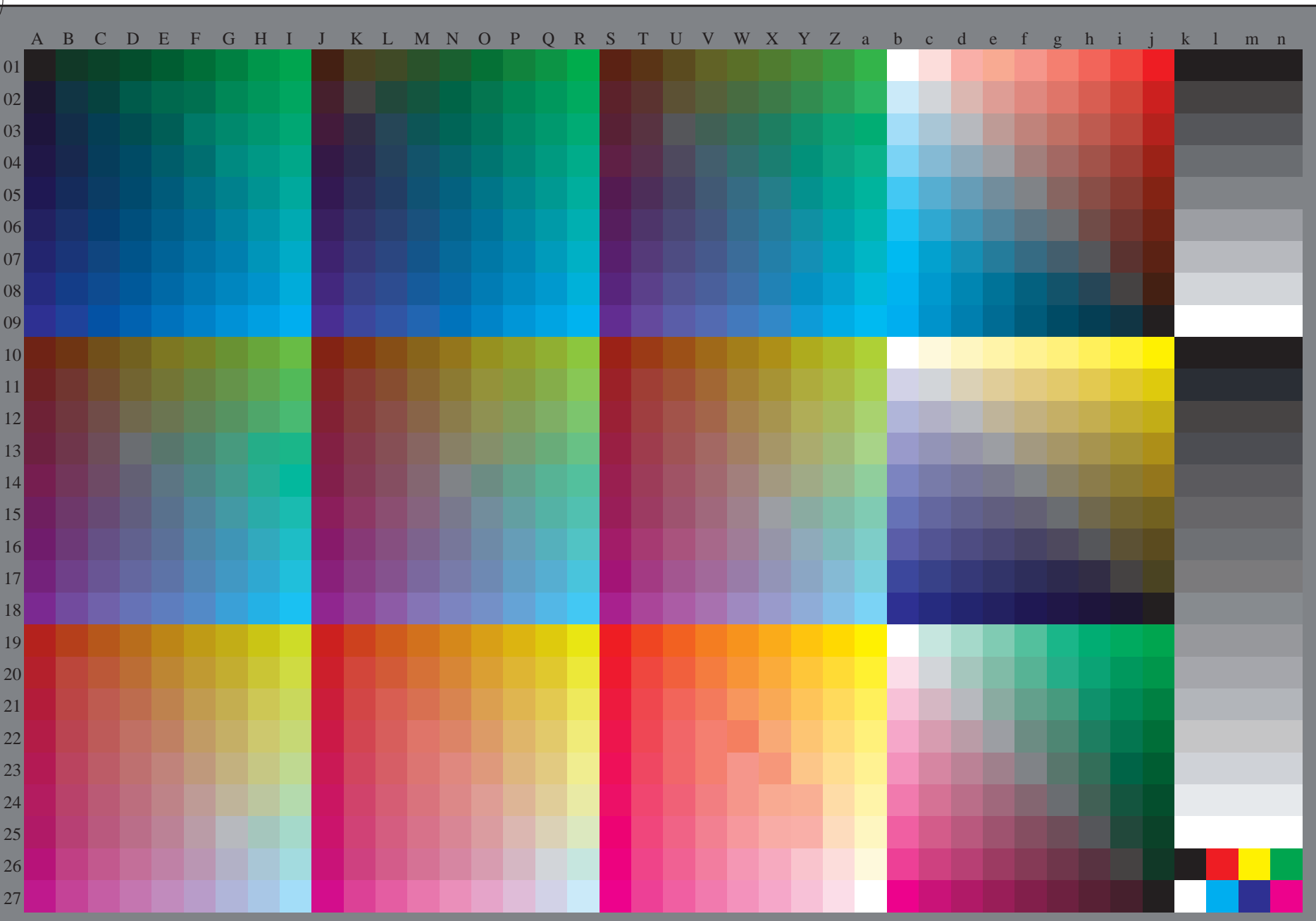
input: rgb/cmyk -> rgb/cmyk  
output: ingen endring





se lignende filer: <http://130.149.60.45/~farbmetrik/RN53/RN53.HTM>  
teknisk informasjon: <http://www.ps.bam.de> eller <http://130.149.60.45/~farbmetrik>

TUB registrering: 20150701-RN53/RN53L0FP.PDF /.PS  
anvendelse for måling av offsettrykk output, separasjon cmyk\* (CMYK)  
TUB-material: code=rh4ta



5-103130-L0 RN530-72

rgb (A\_n), 3D=1

TUB-prøveplansje RN53; 1080 standard farger  
prøveplansje infølge DIN 33872, 3D=1, de=0, cmyk\*

input: *rgb/cmyk* -> *rgb<sub>dd</sub>*  
output: 3D-linearisering til *cmyk<sub>dd</sub>*\*

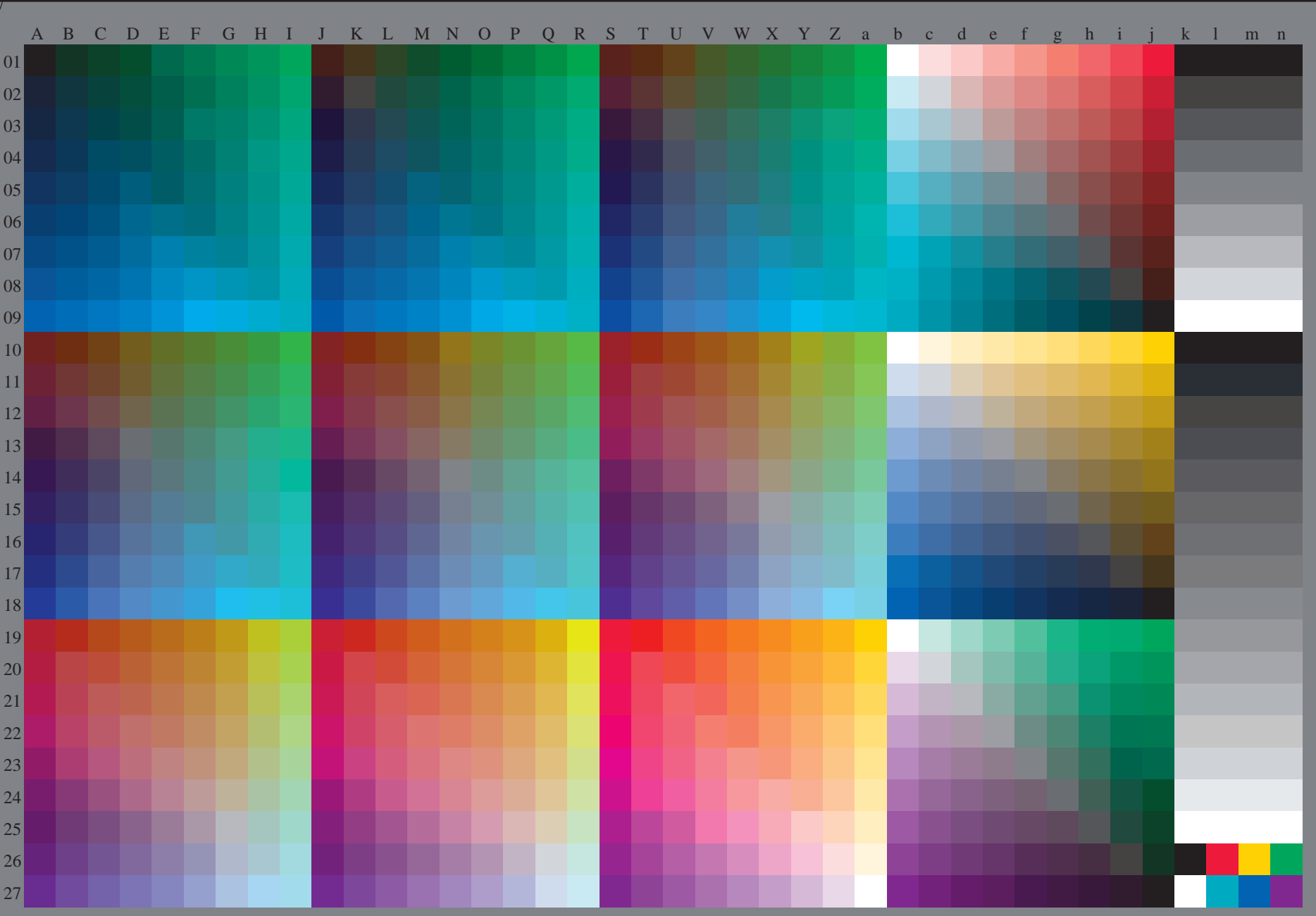
5-103130-F0

C M Y O L V



se lignende filer: <http://130.149.60.45/~farbmetrik/RN53/RN53.HTM>  
teknisk informasjon: <http://www.ps.bam.de> eller <http://130.149.60.45/~farbmetrik>

TUB registrering: 20150701-RN53/RN53L0FP.PDF /.PS  
anvendelse for måling av offsettrykk output, separasjon cmykn6\* (CMYK)  
TUB-material: code=rh4ta



5-113130-L0 RN530-73

rgb (A\_n), 3D=1

TUB-prøveplansje RN53; 1080 standard farger  
prøveplansje infølge DIN 33872, 3D=1, de=1, cmyk\*

input: *rgb/cmyk* -> *rgb<sub>de</sub>*  
output: 3D-linearisering til *cmyk\*<sub>de</sub>*

5-113130-F0

C M Y O L V