

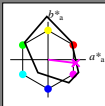
http://130.149.60.45/~farbmetrik/RN39/RN39L0N1.TXT /PS; start output  
N: ingen 3D-linearisering (OL) i fil (F) eller PS-startup (S), side 1/1

Input og output: Printer-Reflektiv-System FRS06a for relativ CIELAB fargetone  $h_{ab,a,rel} = h_{ab}/360 = 353/360 = 0.98$

$H^*_e = B50R_e$

Data for ethvert apparat (d) eller elementærfarge (e):

$HIC^*_e$   
fargetonetekst for fargene på denne siden:  
 $H^*_e = B50R_e$   
trekantslyshet  $T^*$



FRS06a; adapterte (a) CIELAB data

navn	$L^*=L^*_a$	$a^*_a$	$b^*_a$	$C^*_{,ab,a}$	$h^*_{,ab,a}$
R_.,Ma	32.5	62.3	46.4	77.7	36
Y_.,Ma	82.7	-3.1	113.9	114.0	91
G_.,Ma	39.4	-61.8	45.8	76.9	143
C_.,Ma	47.8	-26.8	-34.2	43.4	231
B_.,Ma	10.1	55.1	-61.0	82.2	312
M_.,Ma	34.5	80.6	-33.9	87.5	337
N_.,Ma	6.2	0.0	0.0	0.0	0
W_.,Ma	91.9	0.0	0.0	0.0	0
R_.,CIE	39.9	58.7	27.9	65.0	25
Y_.,CIE	81.2	-2.8	71.5	71.6	92
G_.,CIE	52.2	-42.4	13.6	44.5	162
B_.,CIE	30.5	1.4	-46.4	46.4	271

Data for maksimalfarge (Ma):

LabCh\*\_.,Ma: 49 73 -9 74 353

$HIC^*_e$ .,Ma: B50R\_100\_100\_

rgbic\*\_.,Ma:

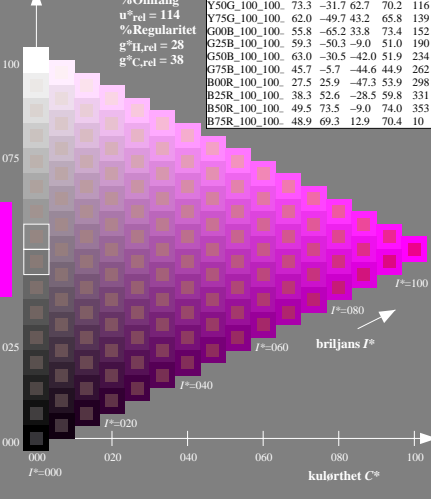
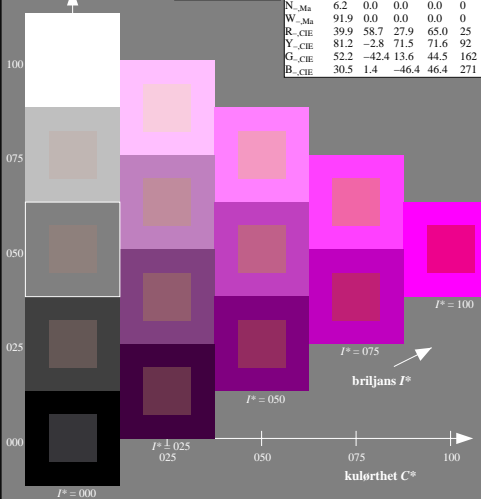
1.0 0.0 1.0 1.0 1.0

trekantslyshet  $T^*$

ORS20a; adapterte (a) CIELAB data

$H^*_e$	$L^*=L^*_a$	$a^*_a$	$b^*_a$	$C^*_{,ab,a}$	$h^*_{,ab,a}$
R00Y_100_100_.	48.4	66.1	40.2	77.3	31
R25Y_100_100_.	56.8	48.0	50.5	69.6	46
R50Y_100_100_.	68.6	25.0	63.9	68.6	68
R75Y_100_100_.	80.6	4.8	77.2	77.3	86
Y00G_100_100_.	90.2	-9.6	88.2	88.7	96
Y25G_100_100_.	83.2	-18.4	79.9	81.9	102
Y50G_100_100_.	73.3	-31.7	62.7	70.2	116
Y75G_100_100_.	62.0	-49.7	43.2	65.8	139
G00B_100_100_.	55.8	-65.2	33.8	73.4	152
G25B_100_100_.	59.3	-50.3	-9.0	51.0	190
G50B_100_100_.	63.0	-30.5	-42.0	51.9	234
G75B_100_100_.	45.7	-5.7	-44.6	44.9	262
B00R_100_100_.	27.5	25.9	-47.3	53.9	298
B25R_100_100_.	38.3	52.6	-28.5	59.8	331
B50R_100_100_.	49.5	73.5	-9.0	74.0	353
B75R_100_100_.	48.9	69.3	12.9	70.4	10

%Omfang  
 $u^*_{,rel} = 114$   
%Regularitet  
 $g^*_{,H,rel} = 28$   
 $g^*_{,C,rel} = 38$



5-003030-L0 RN390-7N

TUB-prøveplansje RN39; farbetoneplan:  $H^*_e=B50R_e$   
prøveplansje infølge DIN 33872, 3D=0, de=0, cmyk

input: rgb/cmyk -> rgb/cmyk  
output: ingen endring

TUB registrering: 20150701-RN39/RN39L0N1.TXT /PS  
anvendelse for måling av laserprinter output

TUB-materiale: code=mat4