

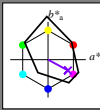
http://130.149.60.45/~farbmetrik/RN29/RN29L0N1.TXT /PS; start output
 N: ingen 3D-linearisering (OL) i fil (F) eller PS-startup (S), side 1/1

Input og output: Printer-Reflektiv-System FRS06a for relativ CIELAB fargetone $h_{ab,a,rel} = h_{ab}/360 = 331/360 = 0.92$

$H^*_- = B25R_-$

Data for ethvert apparat (d) eller elementærfarge (e):

HIC^*_-
 fargetonetekst for fargene på denne siden:
 $H^*_- = B25R_-$
 trekantslyshet T^*



FRS06a; adapterte (a) CIELAB data

| navn | $L^*=L^*_a$ | a^*_a | b^*_a | $C^*_{ab,a}$ | $h^*_{ab,a}$ |
|---------|-------------|---------|---------|--------------|--------------|
| R_-,Ma | 32.5 | 62.3 | 46.4 | 77.7 | 36 |
| Y_-,Ma | 82.7 | -3.1 | 113.9 | 114.0 | 91 |
| G_-,Ma | 39.4 | -61.8 | 45.8 | 76.9 | 143 |
| C_-,Ma | 47.8 | -26.8 | -34.2 | 43.4 | 231 |
| B_-,Ma | 10.1 | 55.1 | -61.0 | 82.2 | 312 |
| M_-,Ma | 34.5 | 80.6 | -33.9 | 87.5 | 337 |
| N_-,Ma | 6.2 | 0.0 | 0.0 | 0.0 | 0 |
| W_-,Ma | 91.9 | 0.0 | 0.0 | 0.0 | 0 |
| R_-,CIE | 39.9 | 58.7 | 27.9 | 65.0 | 25 |
| Y_-,CIE | 81.2 | -2.8 | 71.5 | 71.6 | 92 |
| G_-,CIE | 52.2 | -42.4 | 13.6 | 44.5 | 162 |
| B_-,CIE | 30.5 | 1.4 | -46.4 | 46.4 | 271 |

Data for maksimalfarge (Ma):

LabCh* $_{-,Ma}$: 38 52 -28 59 331

$HIC^*_{-,Ma}$: B25R_100_100_

$rgbic^*_{-,Ma}$:

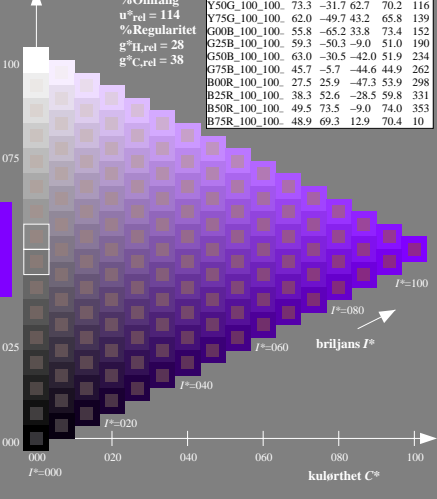
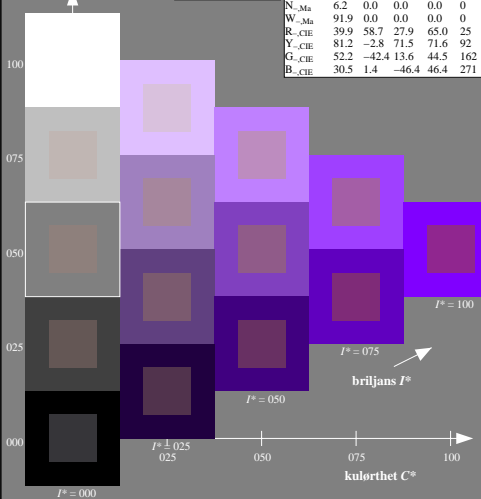
0.5 0.0 1.0 1.0 1.0

trekantslyshet T^*

ORS20a; adapterte (a) CIELAB data

| H^*_- | $L^*=L^*_a$ | a^*_a | b^*_a | $C^*_{ab,a}$ | $h^*_{ab,a}$ |
|---------------|-------------|---------|---------|--------------|--------------|
| R00Y_100_100_ | 48.4 | 66.1 | 40.2 | 77.3 | 31 |
| R25Y_100_100_ | 56.8 | 48.0 | 50.5 | 69.6 | 46 |
| R50Y_100_100_ | 68.6 | 25.0 | 63.9 | 68.6 | 68 |
| R75Y_100_100_ | 80.6 | 4.8 | 77.2 | 77.3 | 86 |
| Y00G_100_100_ | 90.2 | -9.6 | 88.2 | 88.7 | 96 |
| Y25G_100_100_ | 83.2 | -18.4 | 79.9 | 81.9 | 102 |
| Y50G_100_100_ | 73.3 | -31.7 | 62.7 | 70.2 | 116 |
| Y75G_100_100_ | 62.0 | -49.7 | 43.2 | 65.8 | 139 |
| G00B_100_100_ | 55.8 | -65.2 | 33.8 | 73.4 | 152 |
| G25B_100_100_ | 59.3 | -50.3 | -9.0 | 51.0 | 190 |
| G50B_100_100_ | 63.0 | -30.5 | -42.0 | 51.9 | 234 |
| G75B_100_100_ | 45.7 | -5.7 | -44.6 | 44.9 | 262 |
| B00R_100_100_ | 27.5 | 25.9 | -47.3 | 53.9 | 298 |
| B25R_100_100_ | 38.3 | 52.6 | -28.5 | 59.8 | 331 |
| B50R_100_100_ | 49.5 | 73.5 | -9.0 | 74.0 | 353 |
| B75R_100_100_ | 48.9 | 69.3 | 12.9 | 70.4 | 10 |

%Omfang
 $u^*_{rel} = 114$
 %Regularitet
 $g^*_{H,rel} = 28$
 $g^*_{C,rel} = 38$



se følgende filer: <http://130.149.60.45/~farbmetrik/RN29/RN29L0N1.TXT> /PS
 teknisk informasjon: <http://www.ps.bam.de> eller <http://130.149.60.45/~farbmetrik>

TUB registrering: 20150701-RN29/RN29L0N1.TXT /PS
 anvendelse for måling av laserprinter output

TUB-material: code=matata

5-003030-L0 RN290-7N

TUB-prøveplansje RN29; farbetoneplan: $H^*_- = B25R_-$
 prøveplansje infølge DIN 33872, 3D=0, de=0, $cm\dot{y}k$

input: $rgb/cmyk \rightarrow rgb/cmyk$
 output: ingen endring

