

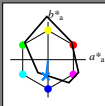
http://130.149.60.45/~farbmetrik/RN09/RN09L0N1.TXT /PS; start output  
N: ingen 3D-linearisering (OL) i fil (F) eller PS-startup (S), side 1/1

Input og output: Printer-Reflektiv-System FRS06a for relativ CIELAB fargetone  $h_{ab,a,rel} = h_{ab}/360 = 262/360 = 0.72$

$H^*_- = G75B_-$

Data for ethvert apparat (d) eller elementærfarge (e):

$HIC^*_-$   
fargetonetekst for fargene på denne siden:  
 $H^*_- = G75B_-$   
trekantslyset  $T^*$



FRS06a; adapterte (a) CIELAB data

navn	$L^*=L^*_a$	$a^*_a$	$b^*_a$	$C^*_{ab,a}$	$h^*_{ab,a}$
R_-,Ma	32.5	62.3	46.4	77.7	36
Y_-,Ma	82.7	-3.1	113.9	114.0	91
G_-,Ma	39.4	-61.8	45.8	76.9	143
C_-,Ma	47.8	-26.8	-34.2	43.4	231
B_-,Ma	10.1	55.1	-61.0	82.2	312
M_-,Ma	34.5	80.6	-33.9	87.5	337
N_-,Ma	6.2	0.0	0.0	0.0	0
W_-,Ma	91.9	0.0	0.0	0.0	0
R_-,CIE	39.9	58.7	27.9	65.0	25
Y_-,CIE	81.2	-2.8	71.5	71.6	92
G_-,CIE	52.2	-42.4	13.6	44.5	162
B_-,CIE	30.5	1.4	-46.4	46.4	271

Data for maksimalfarge (Ma):

LabCh\*-,Ma: 45 -5 -44 44 262

$HIC^*_-,Ma$ : G75B\_100\_100\_

$rgbic^*_-,Ma$ :

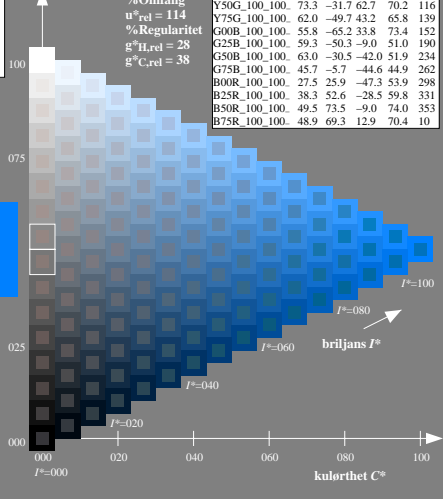
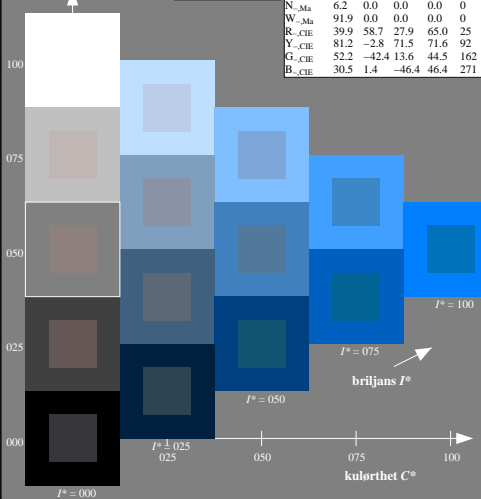
0.0 0.5 1.0 1.0 1.0

trekantslyset  $T^*$

ORS20a; adapterte (a) CIELAB data

$H^*_-$	$L^*=L^*_a$	$a^*_a$	$b^*_a$	$C^*_{ab,a}$	$h^*_{ab,a}$
R00Y_100_100_	48.4	66.1	40.2	77.3	31
R25Y_100_100_	56.8	48.0	50.5	69.6	46
R50Y_100_100_	68.6	25.0	63.9	68.6	68
R75Y_100_100_	80.6	4.8	77.2	77.3	86
Y00G_100_100_	90.2	-9.6	88.2	88.7	96
Y25G_100_100_	83.2	-18.4	79.9	81.9	102
Y50G_100_100_	73.3	-31.7	62.7	70.2	116
Y75G_100_100_	62.0	-49.7	43.2	65.8	139
G00B_100_100_	55.8	-65.2	33.8	73.4	152
G25B_100_100_	59.3	-50.3	-9.0	51.0	190
G50B_100_100_	63.0	-30.5	-42.0	51.9	234
G75B_100_100_	45.7	-5.7	-44.6	44.9	262
B00R_100_100_	27.5	25.9	-47.3	53.9	298
B25R_100_100_	38.3	52.6	-28.5	59.8	331
B50R_100_100_	49.5	73.5	-9.0	74.0	353
B75R_100_100_	48.9	69.3	12.9	70.4	10

%Omfang  
 $u^*_{rel} = 114$   
%Regularitet  
 $g^*_{H,rel} = 28$   
 $g^*_{C,rel} = 38$



5-003030-L0 RN090-7N

TUB-prøveplansje RN09; farbetoneplan:  $H^*_-=G75B_-$   
prøveplansje infølge DIN 33872, 3D=0, de=0,  $cmk$

input:  $rgb/cmyk \rightarrow rgb/cmyk$   
output: ingen endring

TUB registrering: 2015/07/01-RN09/RN09L0N1.TXT /PS  
anvendelse for måling av laserprinter output

TUB-materiale: code=matata