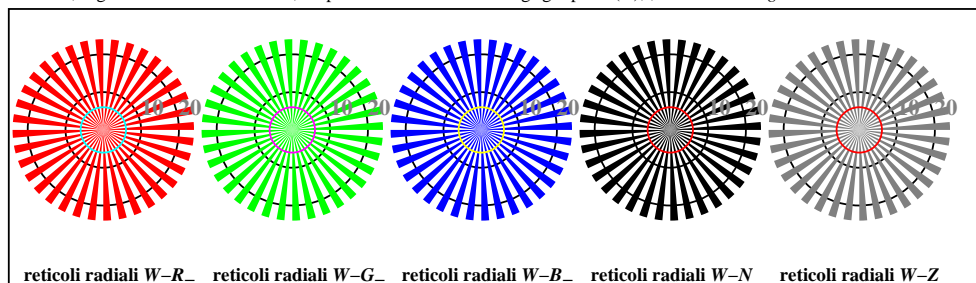
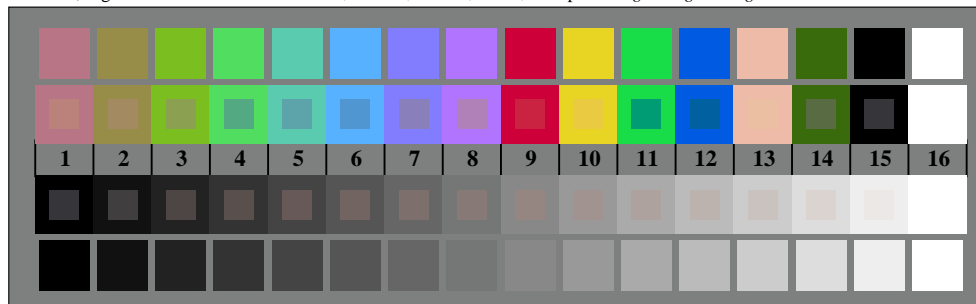




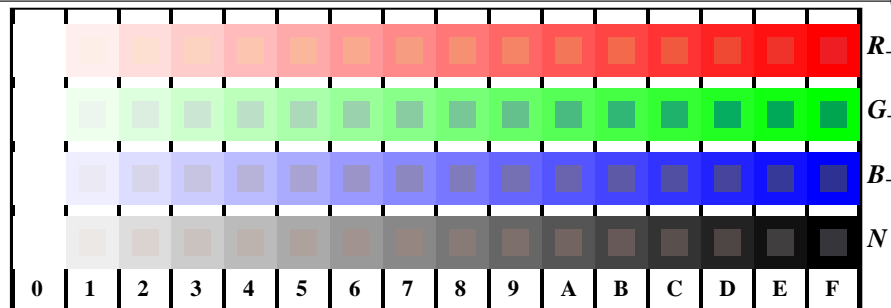
RI970-3, Fig. D1W-: motivo floreale, 14 prova colori CIE i 2 + 16 grigio passi (sf); ; PS 4 colorimage



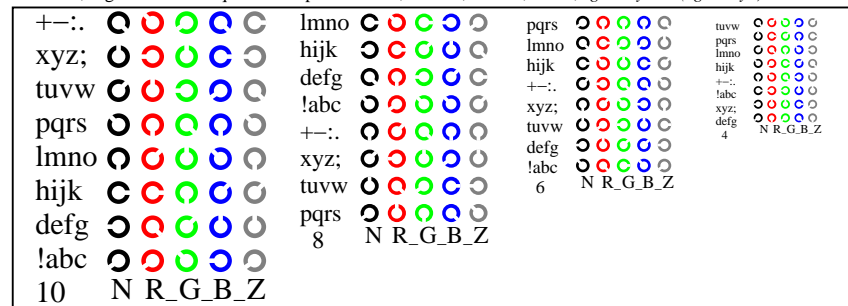
RI970-5, Fig. D2W-: reticoli radiali W-R-; W-G-; W-B-; W-N; PS operator rgb->rgb\_setrgbcolor



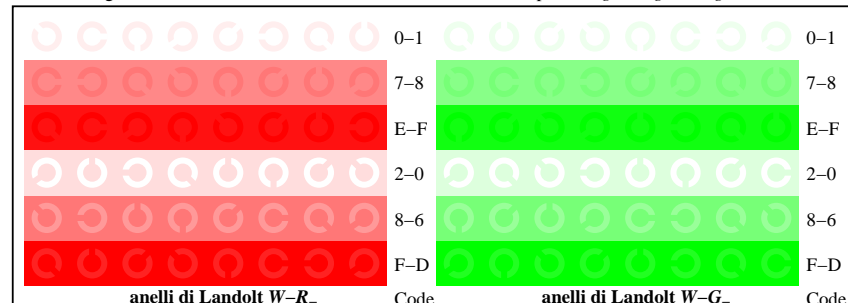
RI970-7, Fig. D3W-: 14 prova colori CIE i 2 + 16 grigio passi (sf); rgb/cmy0 set(rgb/cmyk)color



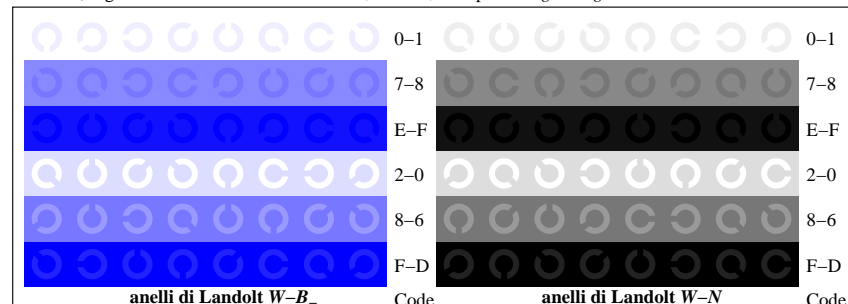
RI971-1, Fig. D4W-: 16 equidistante passi W-R-; W-G-; W-B-; W-N; rgb/cmy0 set(rgb/cmyk)color



RI971-3, Fig. D5W-: codice i Landolt anelli N; R-; G-; B-; Z; PS operator rgb->rgb\_setrgbcolor



RI971-5, Fig. D6W-: anelli di Landolt W-R-; W-G-; PS operator rgb\_setrgbcolor



RI971-7, Fig. D7W-: anelli di Landolt W-B-; W-N; PS operator rgb\_setrgbcolor

vedere dei file simili: http://130.149.60.45/~farbmetrik/RI97/RI97L0FA.TXT /PS  
 informazioni tecniche: http://www.ps.bam.de o http://130.149.60.45/~farbmetrik

TUB iscrizione: 20130201-RI97/RI97L0FA.TXT /PS  
 la domanda per la misura uscita nella stampa di offset

TUB materiale: code=rh4ta