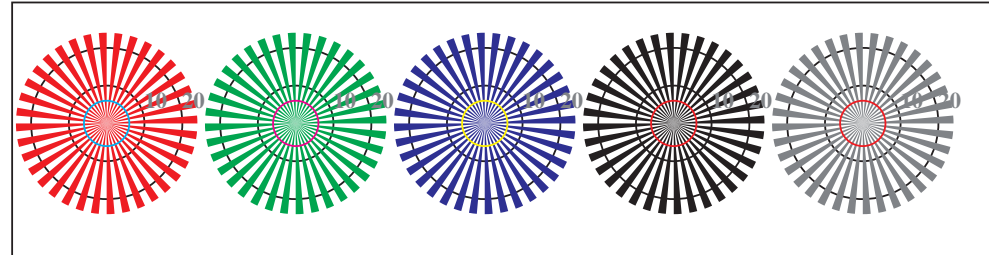


vedere dei file simili: <http://130.149.60.45/~farbmetrik/RI97/RI97L0FP.PDF> /PS
Informazioni tecniche: <http://www.ps.bam.de> o <http://130.149.60.45/~farbmetrik>



RI970-3, Fig. D1Wdd: motivo floreale, 14 prova colori CIE i 2 + 16 grigio passi (sf); ; PS 4 colorimage



reticoli radiali W-R_d reticoli radiali W-G_d reticoli radiali W-B_d reticoli radiali W-N reticoli radiali W-Z

RI970-5, Fig. D2Wdd: reticoli radiali W-R_d; W-G_d; W-B_d; W-N; PS operator *rgb*->*rgb_{dd}* *setrgbcolor*



RI970-7, Fig. D3Wdd: 14 prova colori CIE i 2 + 16 grigio passi (sf); *rgb/cmy0*->*rgb_{dd}* *setrgbcolor*

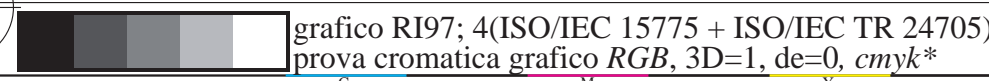
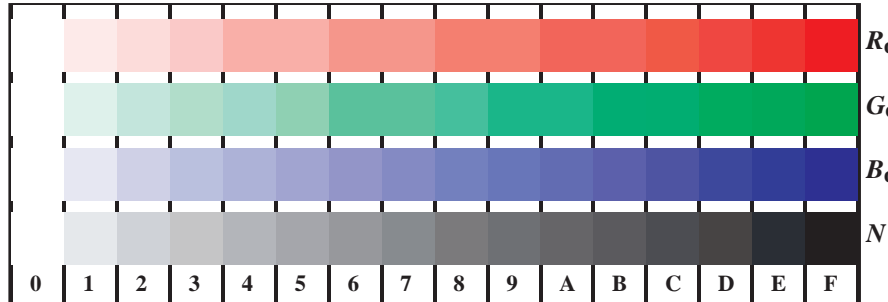
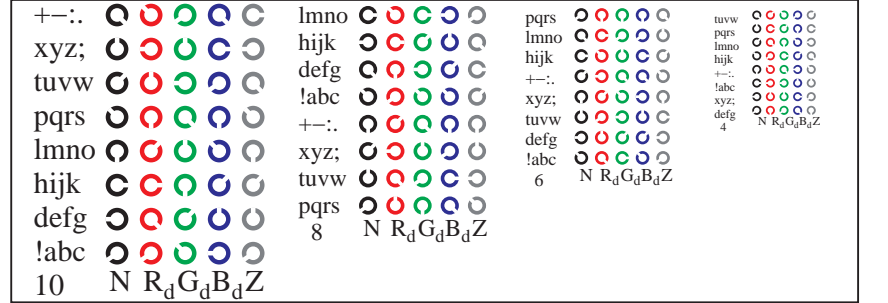


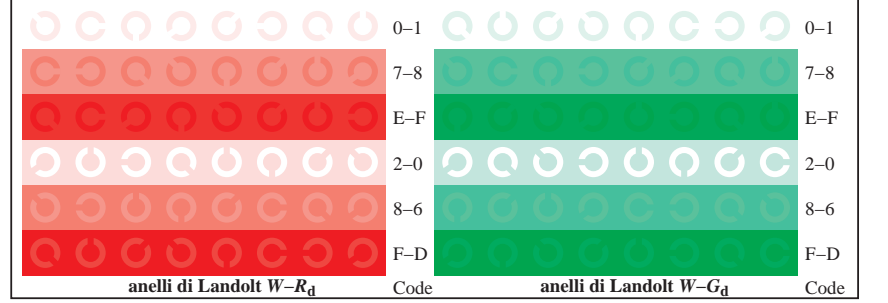
grafico RI97; 4(ISO/IEC 15775 + ISO/IEC TR 24705)
prova cromatica grafico RGB, 3D=1, de=0, *cmyk**



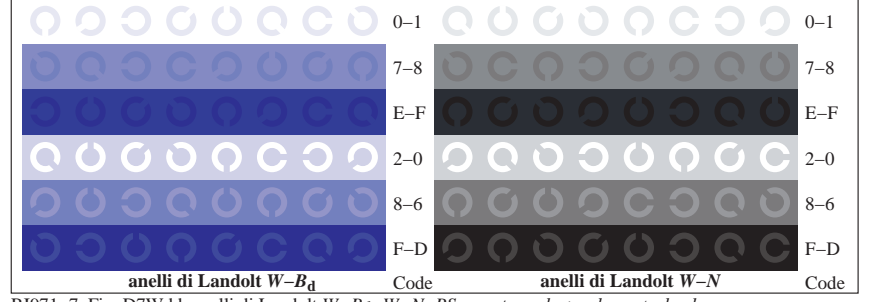
RI971-1, Fig. D4Wdd: 16 equidistante passi W-R_d; W-G_d; W-B_d; W-N; *rgb/cmy0*->*rgb_{dd}* *setrgbcolor*



RI971-3, Fig. D5Wdd: codice i Landolt anelli N; R_d; G_d; B_d; Z; PS operator *rgb*->*rgb_{dd}* *setrgbcolor*



RI971-5, Fig. D6Wdd: anelli di Landolt W-R_d; W-G_d; PS operator *rgb*->*rgb_{dd}* *setrgbcolor*



RI971-7, Fig. D7Wdd: anelli di Landolt W-B_d; W-N; PS operator *rgb*->*rgb_{dd}* *setrgbcolor*

immettere: *rgb/cmyk* -> *rgb_{dd}*
uscita: 3D-linearizzazione a *cmyk**_{dd}

TUB iscrizione: 20130201-RI97/RI97L0FP.PDF /PS
la domanda per la misura uscita nella stampa di offset, separazionecmykn6* (CMYK)
TUB materiale: code=rhata