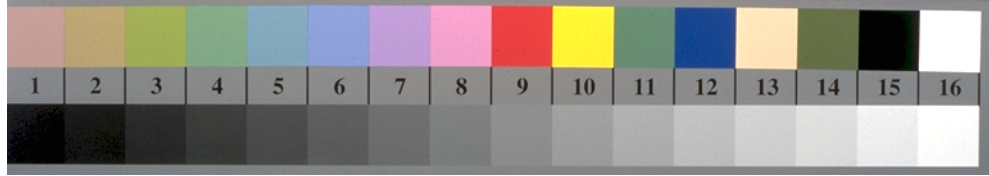
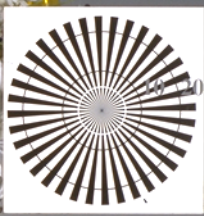


http://130.149.60.45/~farbmetrik/RI96/RI96L0FP.PDF /PS; 3D-linearizzazione  
F: 3D-linearizzazione RI96/RI96LI30FP.DAT nel file (F), pagina 2/2

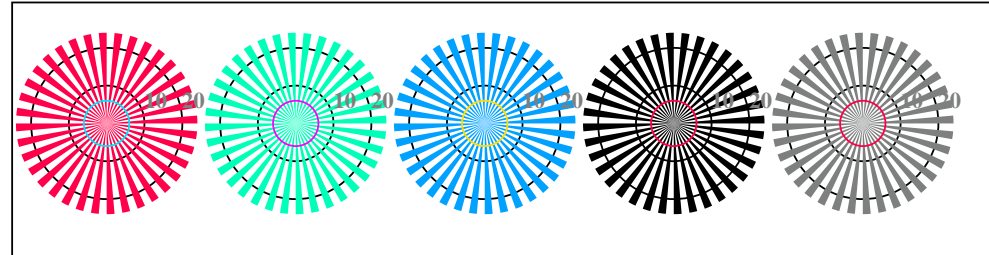
vedere dei file simili: <http://130.149.60.45/~farbmetrik/RI96/RI96L0FP.PDF> /PS  
Informazioni tecniche: <http://www.ps.bam.de> o <http://130.149.60.45/~farbmetrik>



192 x 128  
384 x 256  
768 x 512  
1536 x 1024  
3072 x 2048

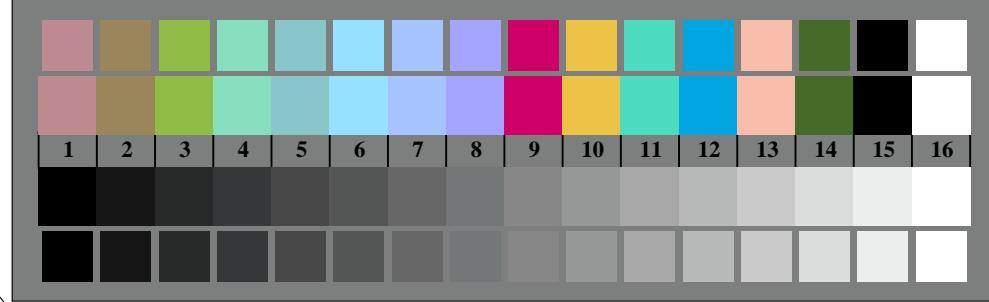


RI960-3, Fig. D1Wde: motivo floreale, 14 prova colori CIE i 2 + 16 grigio passi (sf); ; PS operator 3 colorimage



reticoli radiali W-Re    reticoli radiali W-Ge    reticoli radiali W-Be    reticoli radiali W-N    reticoli radiali W-Z

RI960-5, Fig. D2Wde: reticoli radiali W-Re; W-Ge; W-Be; W-N; PS operator rgb->rgbde setrgbcolor



RI960-7, Fig. D3Wde: 14 prova colori CIE i 2 + 16 grigio passi (sf); rgb/cmy0->rgbde setrgbcolor

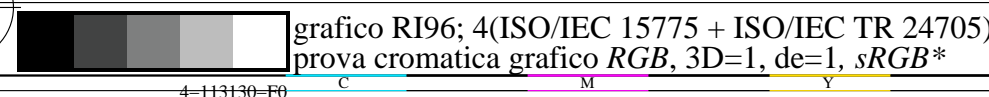
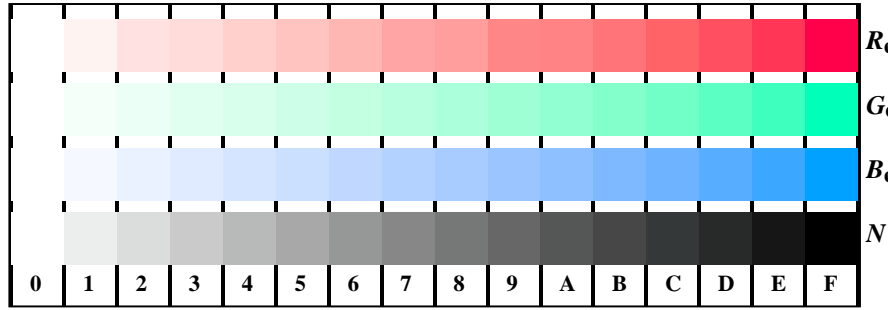
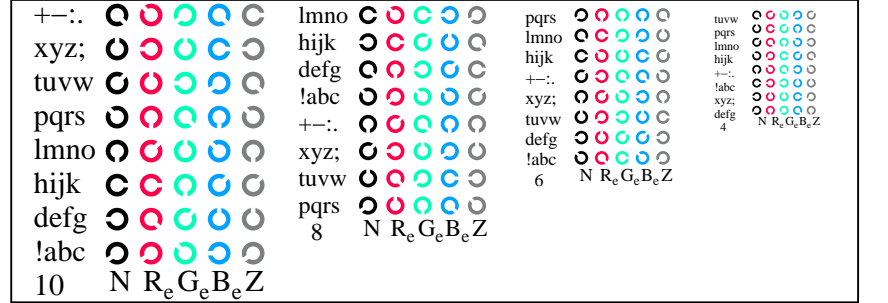


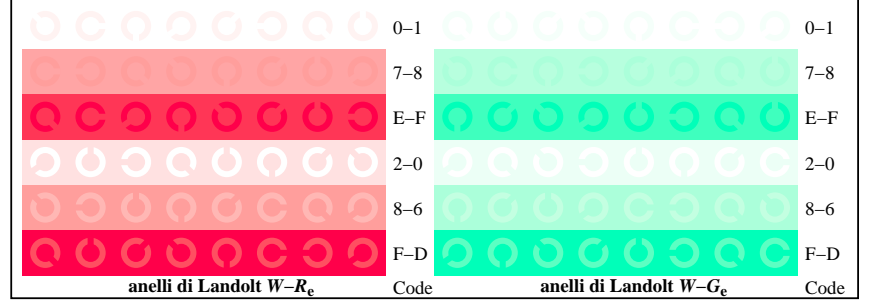
grafico RI96; 4(ISO/IEC 15775 + ISO/IEC TR 24705)  
prova cromatica grafico RGB, 3D=1, de=1, sRGB\*



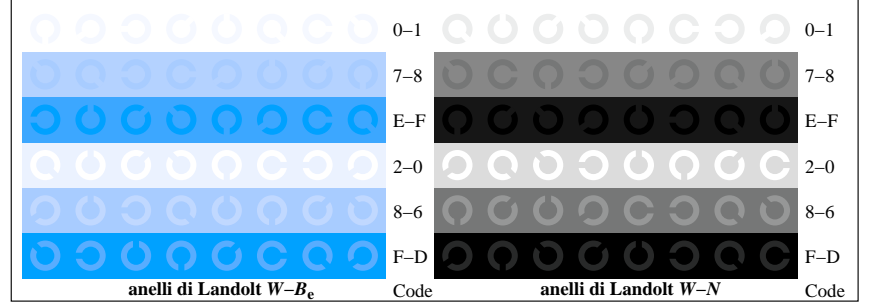
RI961-1, Fig. D4Wde: 16 equidistante passi W-Re; W-Ge; W-Be; W-N; rgb/cmy0->rgbde setrgbcolor



RI961-3, Fig. D5Wde: codice i Landolt anelli N; Re; Ge; Be; Z; PS operator rgb->rgbde setrgbcolor



RI961-5, Fig. D6Wde: anelli di Landolt W-Re; W-Ge; PS operator rgb->rgbde setrgbcolor



RI961-7, Fig. D7Wde: anelli di Landolt W-Be; W-N; PS operator rgb->rgbde setrgbcolor

immettere: rgb/cmyk -> rgbde  
uscita: 3D-linearizzazione a rgb\*de

TUB iscrizione: 20130201-RI96/RI96L0FP.PDF /PS  
la domanda per la misura di stampa di display, nessuna separazione

TUB materiale: code=rhata