

Input and output: Laser Reflective System LRS18a

Data for any device (d)
 or elementary (e) colour:

HIC^*_-

Hue text for the 16 hues
 of this page:

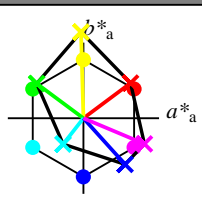
H^*_- = R00Y_-, R25Y_-, ..., B75R_-

ORS20a

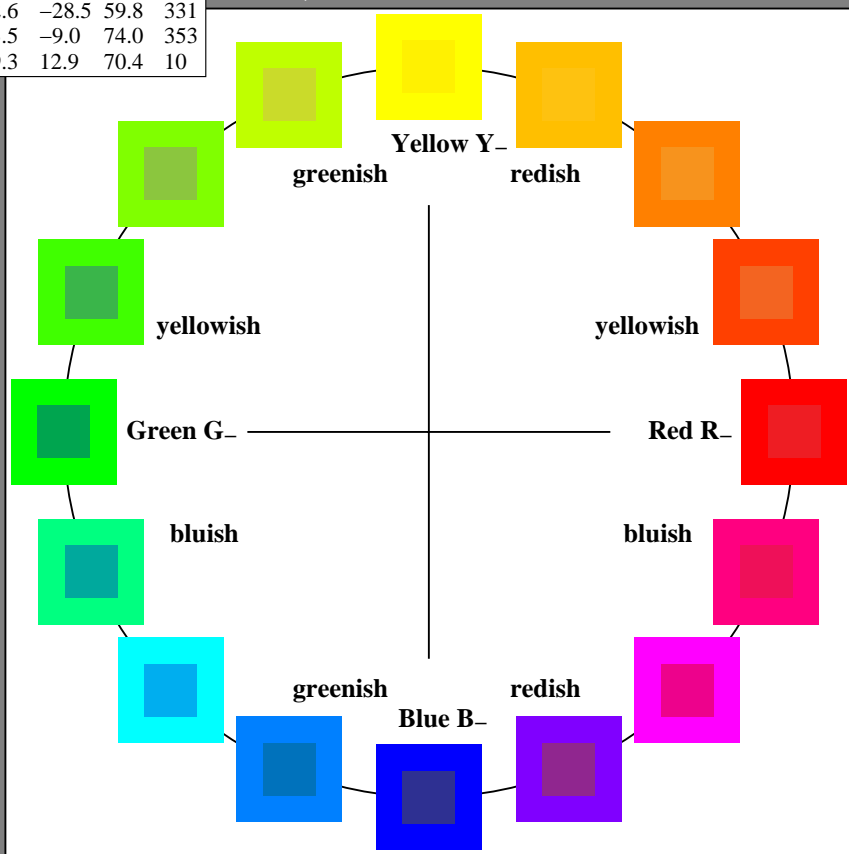
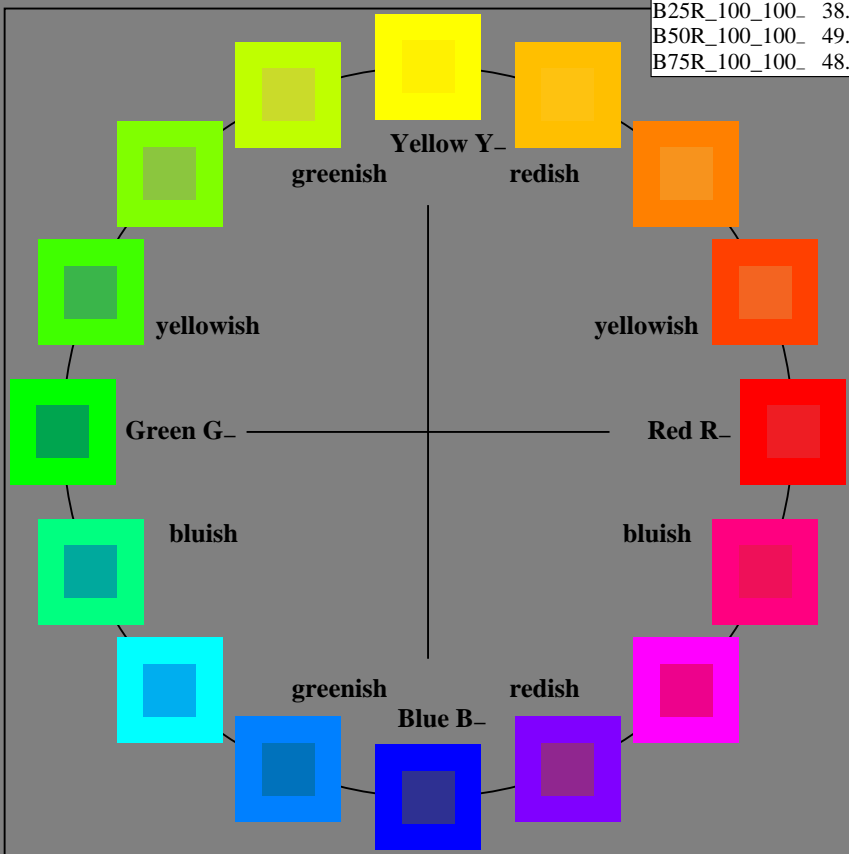
H^*_-	$L^*=L^*_a a^*_a$	b^*_a	$C^*_{ab,a}$	$h^*_{ab,a}$
R00Y_100_100_	48.4	66.1	40.2	77.3
R25Y_100_100_	56.8	48.0	50.5	69.6
R50Y_100_100_	68.6	25.0	63.9	68.6
R75Y_100_100_	80.6	4.8	77.2	77.3
Y00G_100_100_	90.2	-9.6	88.2	88.7
Y25G_100_100_	83.2	-18.4	79.9	81.9
Y50G_100_100_	73.3	-31.7	62.7	70.2
Y75G_100_100_	62.0	-49.7	43.2	65.8
G00B_100_100_	55.8	-65.2	33.8	73.4
G25B_100_100_	59.3	-50.3	-9.0	51.0
G50B_100_100_	63.0	-30.5	-42.0	51.9
G75B_100_100_	45.7	-5.7	-44.6	44.9
B00R_100_100_	27.5	25.9	-47.3	53.9
B25R_100_100_	38.3	52.6	-28.5	59.8
B50R_100_100_	49.5	73.5	-9.0	74.0
B75R_100_100_	48.9	69.3	12.9	70.4

LRS18a

Name	$L^*=L^*_a a^*_a$	b^*_a	$C^*_{ab,a}$	$h^*_{ab,a}$
R_-,Ma	32.5	62.3	46.4	77.7
Y_-,Ma	82.7	-3.1	113.9	114.0
G_-,Ma	39.4	-61.8	45.8	76.9
C_-,Ma	47.8	-26.8	-34.2	43.4
B_-,Ma	10.1	55.1	-61.0	82.2
M_-,Ma	34.5	80.6	-33.9	87.5
N_-,Ma	6.2	0.0	0.0	0.0
W_-,Ma	91.9	0.0	0.0	0.0
R_-,CIE	39.9	58.7	27.9	65.0
Y_-,CIE	81.2	-2.8	71.5	71.6
G_-,CIE	52.2	-42.4	13.6	44.5
B_-,CIE	30.5	1.4	-46.4	46.4



%Gamut
 $u^*_{rel} = 114$
 %Regularity
 $g^*_{H,rel} = 28$
 $g^*_{C,rel} = 38$



vedere dei file simili: http://130.149.60.45/~farbmetrik/RI82/RI82.HTM
 informazioni tecniche: http://www.ps.bam.de o http://130.149.60.45/~farbmetrik

TUB iscrizione: 20130201-RI82/RI82L0NP.PDF /.PS
 la domanda per la misura di uscita della stampante laser

TUB materiale: code=rh4ta

RI820-7N_RGB 4-003030-L0

grafico TUB-RI82; cerchio delle tinte a 16 passi, $cf=1$
 grafico conformemente a DIN 33872

immettere: $rgb/cmyk \rightarrow rgb/cmyk$
 uscita: nessun cambiamento