

Immettere y uscita: Laser Reflective System LRS18a

Dati del dispositivo (d) o colori elementari (e):

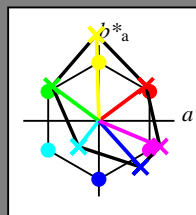
HIC*_

codice di tonalità per i colori questa pagina:

H*_ = R00Y_, R25Y_, ..., B75R_

ORS20a; dati atti CIELAB (a)

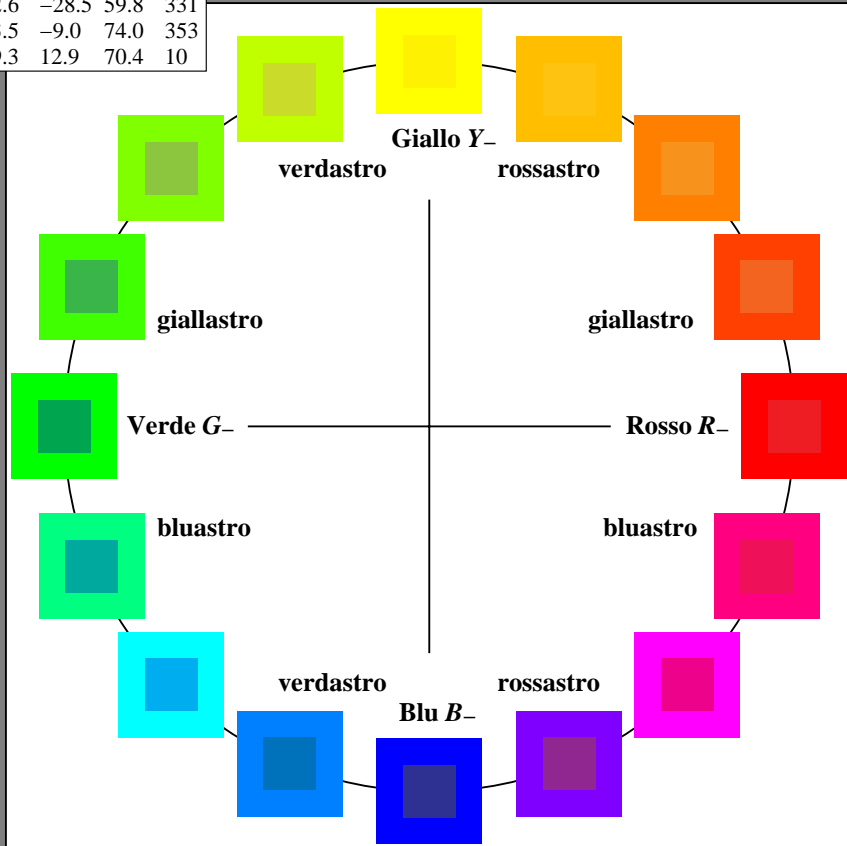
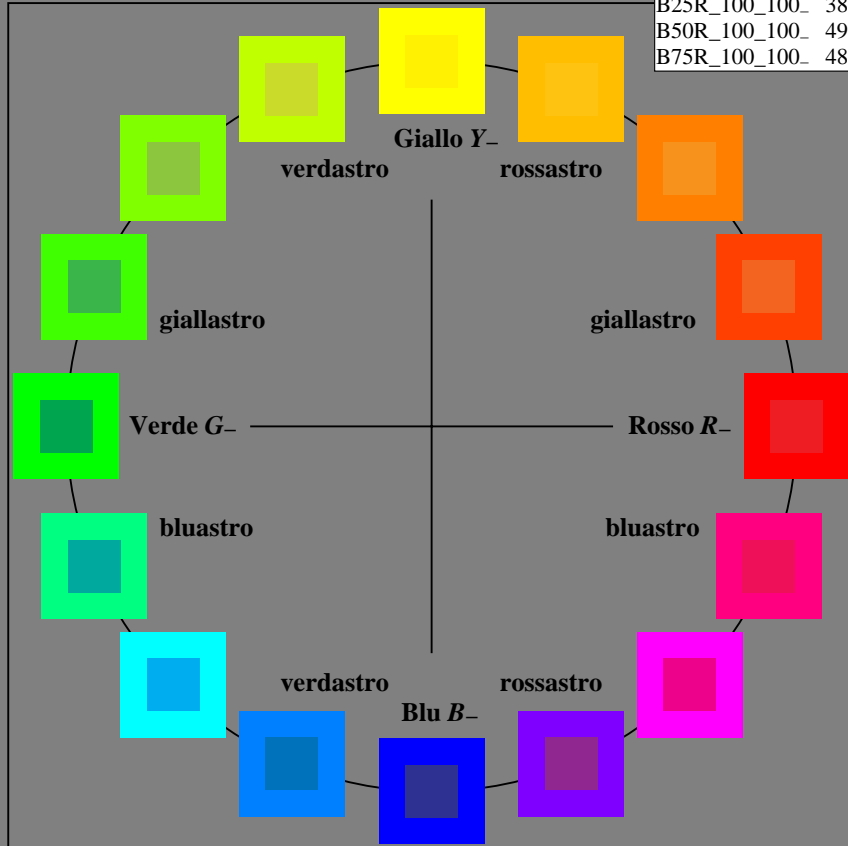
H*_	L*=L*_a a*_a	b*_a	C*_ab,a	h*_ab,a	
R00Y_100_100_	48.4	66.1	40.2	77.3	31
R25Y_100_100_	56.8	48.0	50.5	69.6	46
R50Y_100_100_	68.6	25.0	63.9	68.6	68
R75Y_100_100_	80.6	4.8	77.2	77.3	86
Y00G_100_100_	90.2	-9.6	88.2	88.7	96
Y25G_100_100_	83.2	-18.4	79.9	81.9	102
Y50G_100_100_	73.3	-31.7	62.7	70.2	116
Y75G_100_100_	62.0	-49.7	43.2	65.8	139
G00B_100_100_	55.8	-65.2	33.0	73.4	152
G25B_100_100_	59.3	-50.3	-9.0	51.0	190
G50B_100_100_	63.0	-30.5	-42.0	51.9	234
G75B_100_100_	45.7	-5.7	-44.6	44.9	262
B00R_100_100_	27.5	25.9	-47.3	53.9	298
B25R_100_100_	38.3	52.6	-28.5	59.8	331
B50R_100_100_	49.5	73.5	-9.0	74.0	353
B75R_100_100_	48.9	69.3	12.9	70.4	10



%Gamma
 $u^*_{rel} = 114$
 %Regularità
 $g^*_{H,rel} = 28$
 $g^*_{C,rel} = 38$

LRS18a; dati atti CIELAB (a)

name	L*=L*_a a*_a	b*_a	C*_ab,a	h*_ab,a	
R_.,Ma	32.5	62.3	46.4	77.7	36
Y_.,Ma	82.7	-3.1	113.9	114.0	91
G_.,Ma	39.4	-61.8	45.8	76.9	143
C_.,Ma	47.8	-26.8	-34.2	43.4	231
B_.,Ma	10.1	55.1	-61.0	82.2	312
M_.,Ma	34.5	80.6	-33.9	87.5	337
N_.,Ma	6.2	0.0	0.0	0.0	0
W_.,Ma	91.9	0.0	0.0	0.0	0
R_.,CIE	39.9	58.7	27.9	65.0	25
Y_.,CIE	81.2	-2.8	71.5	71.6	92
G_.,CIE	52.2	-42.4	13.6	44.5	162
B_.,CIE	30.5	1.4	-46.4	46.4	271



vedere dei file simili: http://130.149.60.45/~farbmetrik/RI82/RI82.HTM
 informazioni tecniche: http://www.ps.bam.de o http://130.149.60.45/~farbmetrik

TUB iscrizione: 20150701-RI82/RI82LONA.TXT /.PS
 la domanda per la misura di uscita della stampante laser

TUB materiale: code=rh4ta

Immettere y uscita: Laser Reflective System LRS18a

Dati del dispositivo (d) o colori elementari (e):

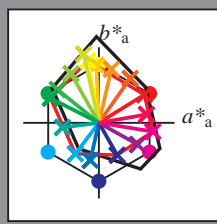
HIC^*_d

codice di tonalità per i colori questa pagina:

$H^*_d = R00Y_d, R25Y_d, \dots, B75R_d$

LRS18a; dati atti CIELAB (a)

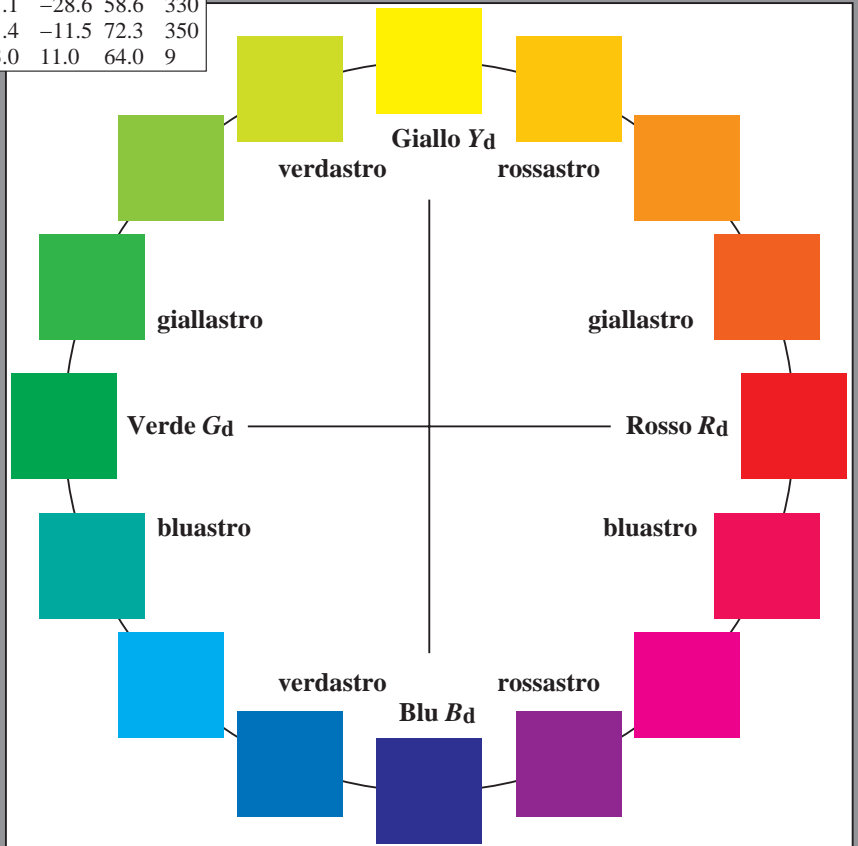
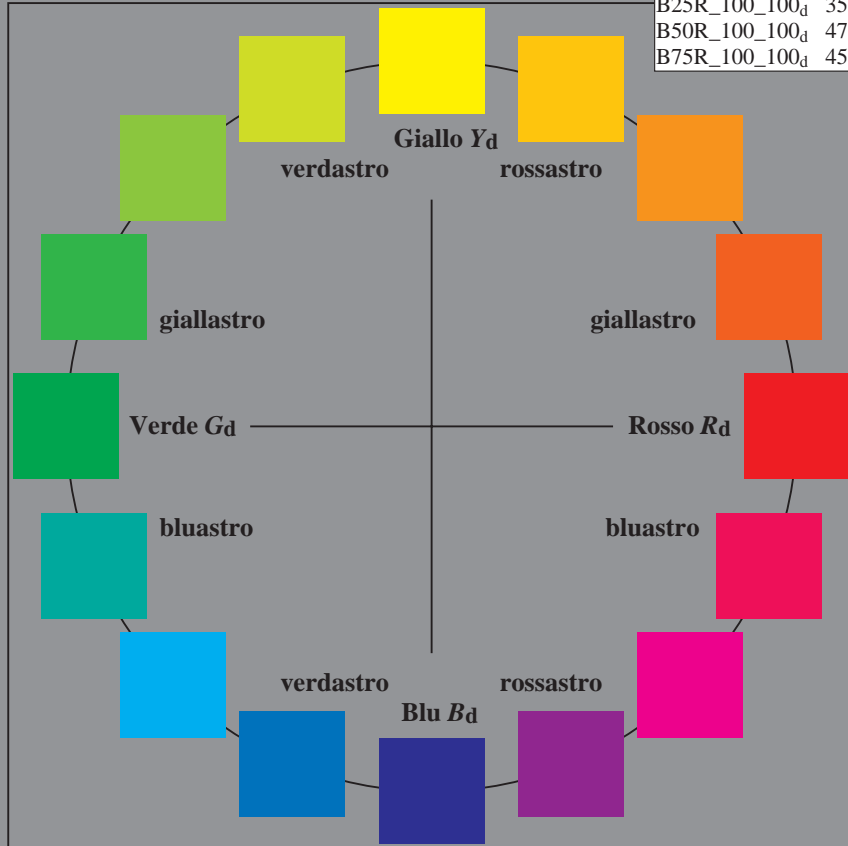
H^*_d	$L^*=L^*_a a^*_a$	b^*_a	$C^*_{ab,a}$	$h^*_{ab,a}$	
R00Y_100_100_d	47.0	60.1	37.1	70.6	31
R25Y_100_100_d	59.3	41.4	58.7	71.9	54
R50Y_100_100_d	72.6	16.6	70.9	72.8	76
R75Y_100_100_d	84.3	-3.3	76.4	76.5	92
Y00G_100_100_d	91.3	-14.5	82.1	83.4	100
Y25G_100_100_d	91.1	-20.0	90.8	92.9	102
Y50G_100_100_d	74.8	-36.6	64.9	74.5	119
Y75G_100_100_d	61.6	-54.7	43.8	70.1	141
G00B_100_100_d	55.7	-64.0	32.6	71.8	152
G25B_100_100_d	57.5	-47.9	-6.0	48.3	187
G50B_100_100_d	53.0	-31.0	-40.9	51.4	232
G75B_100_100_d	46.1	-11.3	-49.4	50.6	257
B00R_100_100_d	32.3	24.2	-42.5	48.9	299
B25R_100_100_d	35.9	51.1	-28.6	58.6	330
B50R_100_100_d	47.1	71.4	-11.5	72.3	350
B75R_100_100_d	45.9	63.0	11.0	64.0	9



%Gamma
 $u^*_{rel} = 114$
 %Regularità
 $g^*_H,rel = 28$
 $g^*_C,rel = 38$

LRS18a; dati atti CIELAB (a)

name	$L^*=L^*_a a^*_a$	b^*_a	$C^*_{ab,a}$	$h^*_{ab,a}$	
R _d ,Ma	47.0	60.1	37.1	70.6	31
Y _d ,Ma	91.3	-14.5	82.1	83.4	100
G _d ,Ma	55.7	-64.0	32.6	71.8	152
C _d ,Ma	53.0	-31.0	-40.9	51.4	232
B _d ,Ma	32.3	24.2	-42.5	48.9	299
M _d ,Ma	47.1	71.4	-11.5	72.3	350
N _d ,Ma	14.7	0.0	0.0	0.0	0
W _d ,Ma	96.3	0.0	0.0	0.0	0
R _d ,CIE	39.9	58.7	27.9	65.0	25
Y _d ,CIE	81.2	-2.8	71.5	71.6	92
G _d ,CIE	52.2	-42.4	13.6	44.5	162
B _d ,CIE	30.5	1.4	-46.4	46.4	271



vedere dei file simili: http://130.149.60.45/~farbmetrik/RI82/RI82.HTM
 informazioni tecniche: http://www.ps.bam.de o http://130.149.60.45/~farbmetrik

TUB iscrizione: 20150701-RI82/RI82L0NA.TXT /.PS
 la domanda per la misura di uscita della stampante laser, separazione cmyrn6 (CMYK)
 TUB materiale: code=rh4ta



grafico TUB-RI82; cerchio delle tinte a 16 passi, $cf=1$
 grafico conformemente a DIN 33872, 3D=0, de=0, cmyk

immettete: $rgb/cmyk \rightarrow rgb_d$
 uscita: trasferire a $cmyk_d$



Immettere y uscita: Laser Reflective System LRS18a

Dati del dispositivo (d) o colori elementari (e):

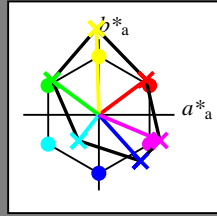
HIC*_

codice di tonalità per i colori questa pagina:

H*_ = R00Y_, R25Y_, ..., B75R_

ORS20a; dati atti CIELAB (a)

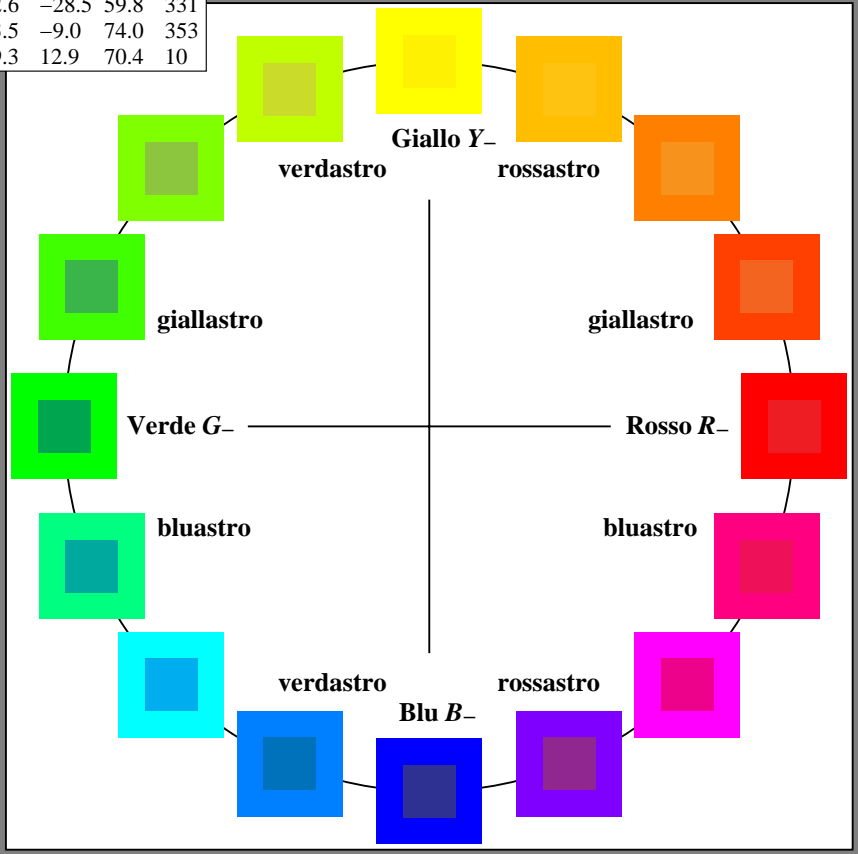
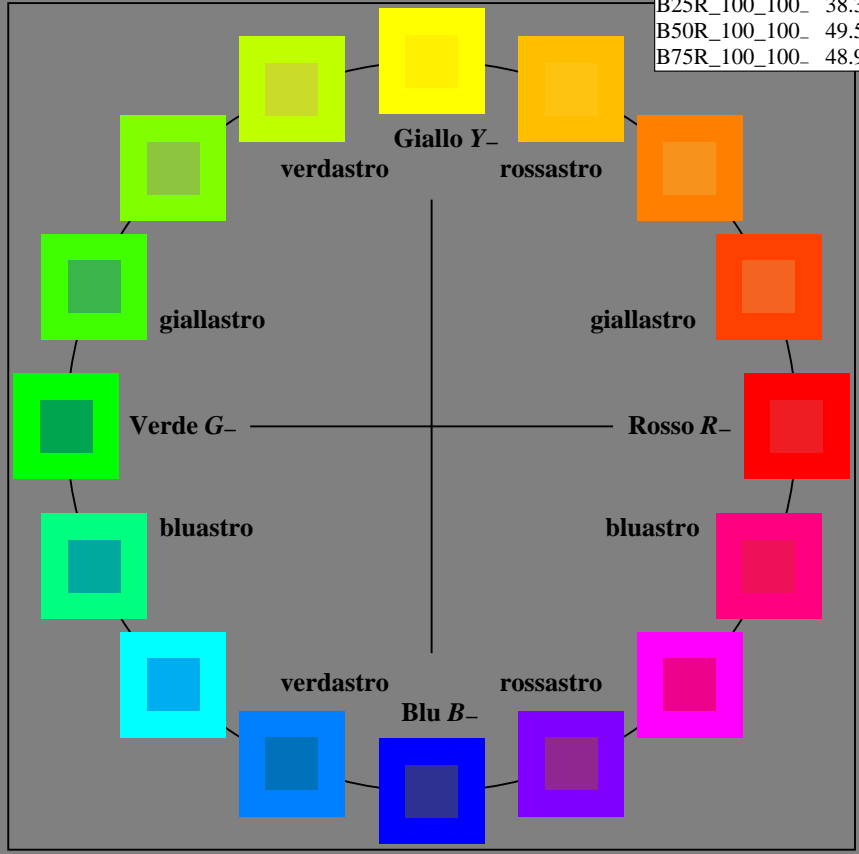
H*_	L*=L*_a a*_a	b*_a	C*_ab,a	h*_ab,a	
R00Y_100_100_	48.4	66.1	40.2	77.3	31
R25Y_100_100_	56.8	48.0	50.5	69.6	46
R50Y_100_100_	68.6	25.0	63.9	68.6	68
R75Y_100_100_	80.6	4.8	77.2	77.3	86
Y00G_100_100_	90.2	-9.6	88.2	88.7	96
Y25G_100_100_	83.2	-18.4	79.9	81.9	102
Y50G_100_100_	73.3	-31.7	62.7	70.2	116
Y75G_100_100_	62.0	-49.7	43.2	65.8	139
G00B_100_100_	55.8	-65.2	33.0	73.4	152
G25B_100_100_	59.3	-50.3	-9.0	51.0	190
G50B_100_100_	63.0	-30.5	-42.0	51.9	234
G75B_100_100_	45.7	-5.7	-44.6	44.9	262
B00R_100_100_	27.5	25.9	-47.3	53.9	298
B25R_100_100_	38.3	52.6	-28.5	59.8	331
B50R_100_100_	49.5	73.5	-9.0	74.0	353
B75R_100_100_	48.9	69.3	12.9	70.4	10



%Gamma
 $u^*_{rel} = 114$
 %Regularità
 $g^*_{H,rel} = 28$
 $g^*_{C,rel} = 38$

LRS18a; dati atti CIELAB (a)

name	L*=L*_a a*_a	b*_a	C*_ab,a	h*_ab,a	
R_.,Ma	32.5	62.3	46.4	77.7	36
Y_.,Ma	82.7	-3.1	113.9	114.0	91
G_.,Ma	39.4	-61.8	45.8	76.9	143
C_.,Ma	47.8	-26.8	-34.2	43.4	231
B_.,Ma	10.1	55.1	-61.0	82.2	312
M_.,Ma	34.5	80.6	-33.9	87.5	337
N_.,Ma	6.2	0.0	0.0	0.0	0
W_.,Ma	91.9	0.0	0.0	0.0	0
R_.,CIE	39.9	58.7	27.9	65.0	25
Y_.,CIE	81.2	-2.8	71.5	71.6	92
G_.,CIE	52.2	-42.4	13.6	44.5	162
B_.,CIE	30.5	1.4	-46.4	46.4	271



vedere dei file simili: http://130.149.60.45/~farbmetrik/RI82/RI82.HTM
 informazioni tecniche: http://www.ps.bam.de o http://130.149.60.45/~farbmetrik

TUB iscrizione: 20150701-RI82/RI82LONA.TXT /.PS
 la domanda per la misura di uscita della stampante laser

TUB materiale: code=rh4ta



grafico TUB-RI82; cerchio delle tinte a 16 passi, cf=1
 grafico conformemente a DIN 33872

immettree: rgb/cmyk -> rgb/cmyk
 uscita: nessun cambiamento



Immettere y uscita: Laser Reflective System LRS18a

Dati del dispositivo (d) o colori elementari (e):

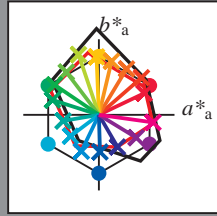
HIC^*_e

codice di tonalità per i colori questa pagina:

$H^*_e = R00Y_e, R25Y_e, \dots, B75R_e$

LRS18a; dati atti CIELAB (a)

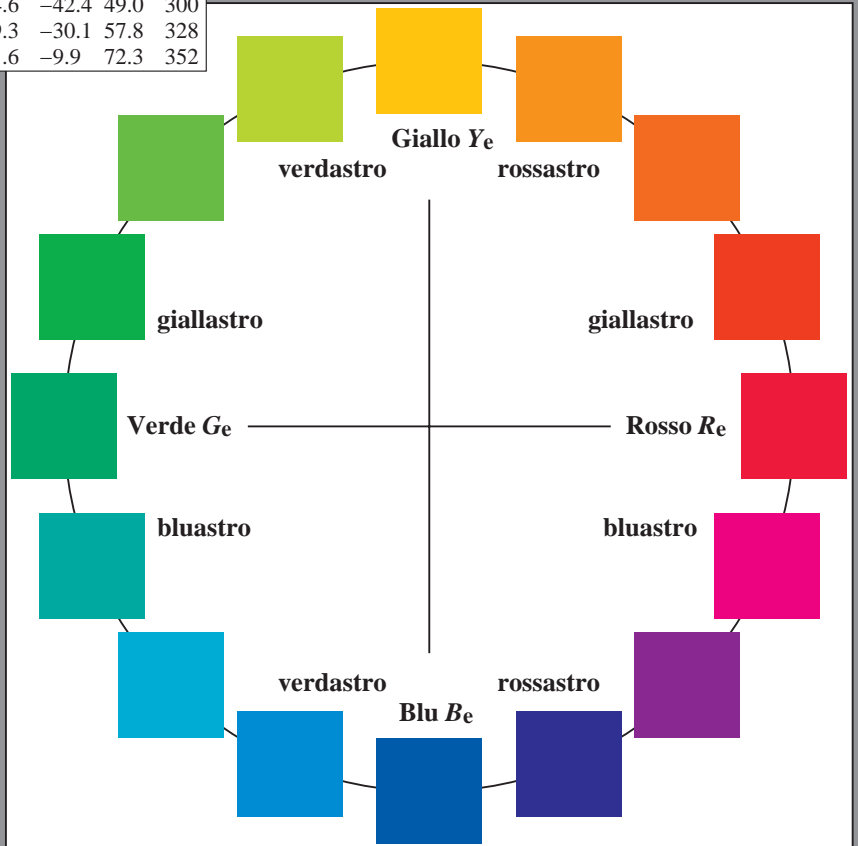
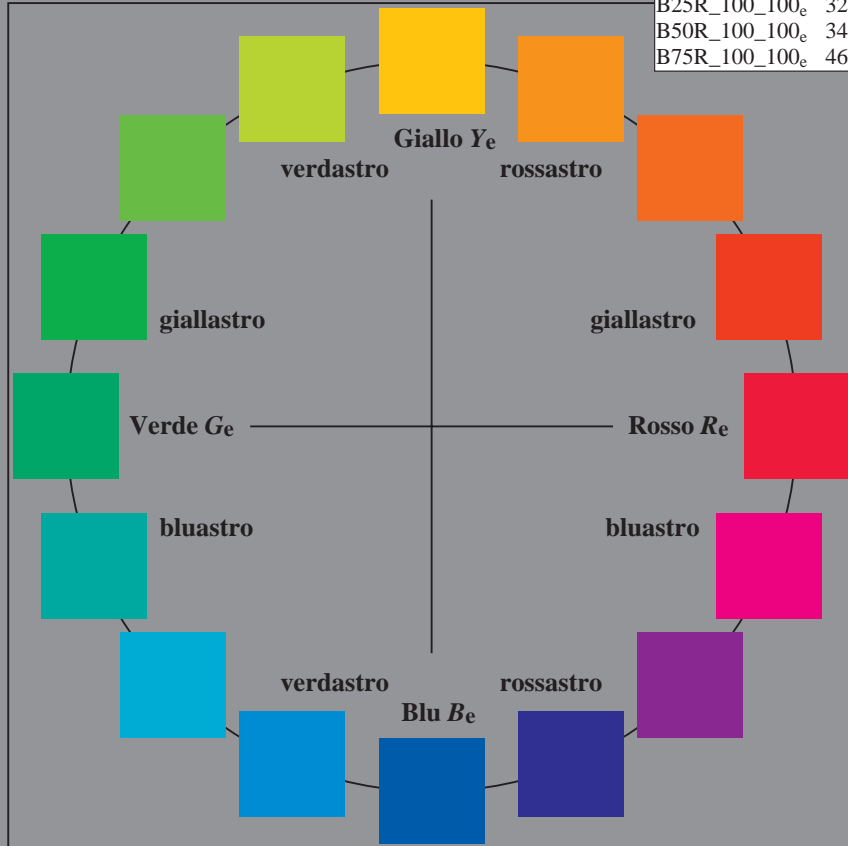
H^*_e	$L^*=L^*_a a^*_a$	b^*_a	$C^*_{ab,a}$	$h^*_{ab,a}$	
R00Y_100_100 _e	46.3	60.0	28.5	66.4	25
R25Y_100_100 _e	51.3	56.3	49.1	74.7	41
R50Y_100_100 _e	61.8	36.6	60.7	70.9	58
R75Y_100_100 _e	72.5	16.7	70.9	72.8	76
Y00G_100_100 _e	84.1	-3.0	76.7	76.7	92
Y25G_100_100 _e	84.5	-26.8	79.7	84.1	108
Y50G_100_100 _e	69.6	-42.9	56.4	70.9	127
Y75G_100_100 _e	59.2	-58.5	39.6	70.7	145
G00B_100_100 _e	55.2	-61.3	19.6	64.4	162
G25B_100_100 _e	57.5	-47.1	-7.9	47.8	189
G50B_100_100 _e	56.1	-37.4	-28.1	46.8	216
G75B_100_100 _e	52.0	-23.1	-48.1	53.4	244
B00R_100_100 _e	38.0	1.4	-49.0	49.1	271
B25R_100_100 _e	32.3	24.6	-42.4	49.0	300
B50R_100_100 _e	34.7	49.3	-30.1	57.8	328
B75R_100_100 _e	46.8	71.6	-9.9	72.3	352



%Gamma
 $u^*_{rel} = 114$
 %Regularità
 $g^*_{H,rel} = 28$
 $g^*_{C,rel} = 38$

LRS18a; dati atti CIELAB (a)

name	$L^*=L^*_a a^*_a$	b^*_a	$C^*_{ab,a}$	$h^*_{ab,a}$	
R _{e, Ma}	46.3	60.0	28.5	66.4	25
Y _{e, Ma}	84.1	-3.0	76.7	76.7	92
G _{e, Ma}	55.2	-61.3	19.6	64.4	162
C _{e, Ma}	56.1	-37.4	-28.1	46.8	216
B _{e, Ma}	38.0	1.4	-49.0	49.1	271
M _{e, Ma}	34.7	49.3	-30.1	57.8	328
N _{e, Ma}	14.7	0.0	0.0	0.0	0
W _{e, Ma}	96.3	0.0	0.0	0.0	0
R _{e, CIE}	39.9	58.7	27.9	65.0	25
Y _{e, CIE}	81.2	-2.8	71.5	71.6	92
G _{e, CIE}	52.2	-42.4	13.6	44.5	162
B _{e, CIE}	30.5	1.4	-46.4	46.4	271



vedere dei file simili: <http://130.149.60.45/~farbmetrik/RI82/RI82.HTM>
 informazioni tecniche: <http://www.ps.bam.de> o <http://130.149.60.45/~farbmetrik>

TUB iscrizione: 20150701-RI82/RI82L0NA.TXT /PS
 la domanda per la misura di uscita della stampante laser, separazione cmyrn6 (CMYK)
 TUB materiale: code=rh4ta