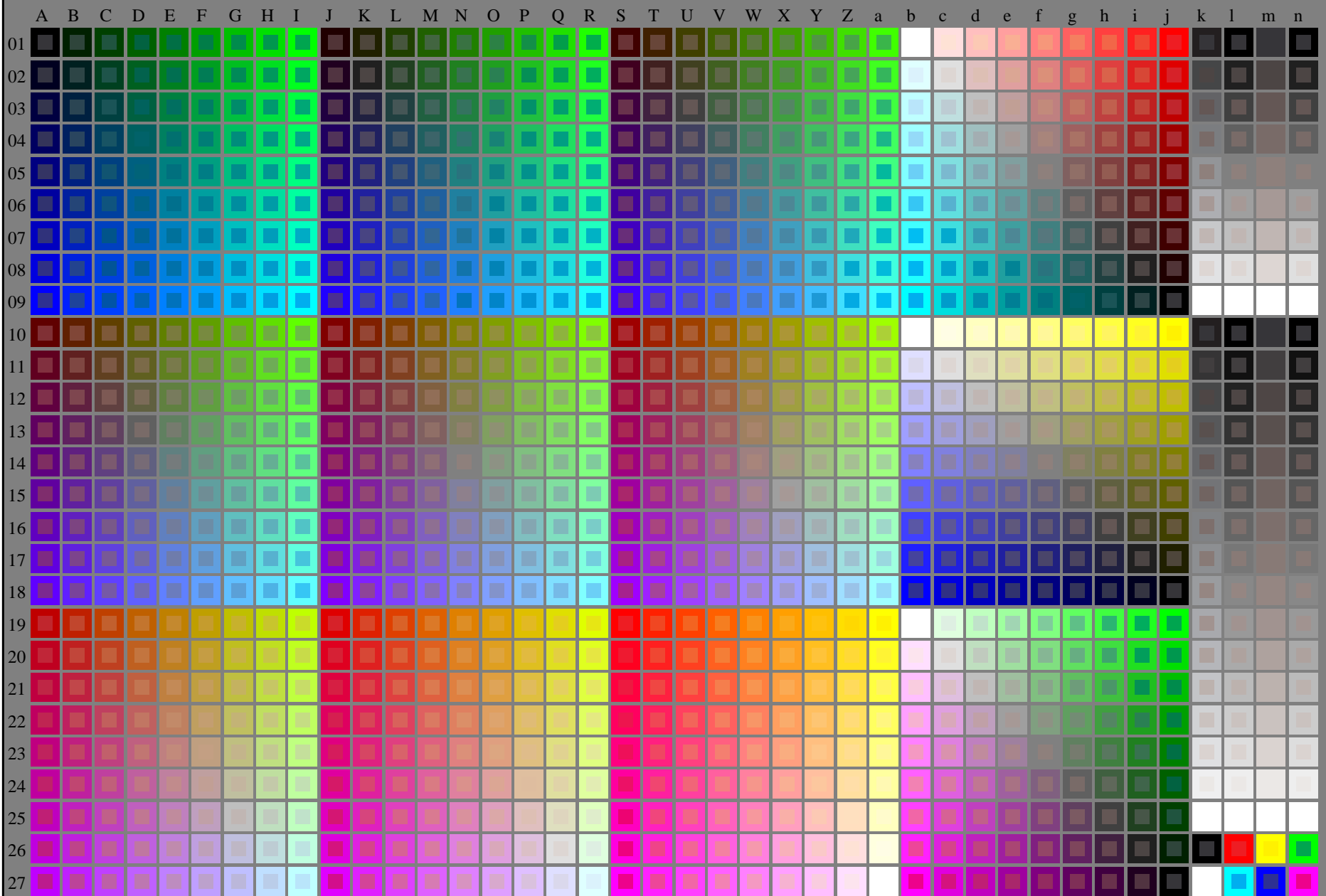


vedere dei file simili: <http://130.149.60.45/~farbmetrik/RI78/RI78.HTM>
informazioni tecniche: <http://www.ps.bam.de> o <http://130.149.60.45/~farbmetrik>

TUB iscrizione: 20150701-RI78/RI78L0FA.TXT /.PS
la domanda per la misura di stampa di display

TUB materiale: code=rh4ta

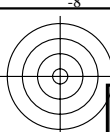


RI780-7N_RGB 4-103034-L0

rgb (A_j + k26_n27), 000n (k), w (l), nnn0 (m), www (n), 3D = 1

grafico TUB-RI78; 1080 colori standard, cf=0,9
grafico conformemente a DIN 33872

immettree: rgb/cmyk -> rgb/cmyk
uscita: nessun cambiamento



vedere dei file simili: <http://130.149.60.45/~farbmetrik/RI78/RI78L0FA.TXT> / .PS
informazioni tecniche: <http://www.ps.bam.de> o <http://130.149.60.45/~farbmetrik>

TUB iscrizione: 20150701-RI78/RI78L0FA.TXT /.PS
la domanda per la misura di stampa di display, nessuna separazione rgb* (RGB)
TUB materiale: code=rh4ta

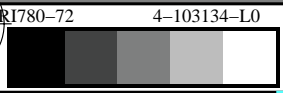
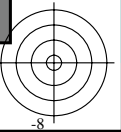
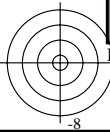
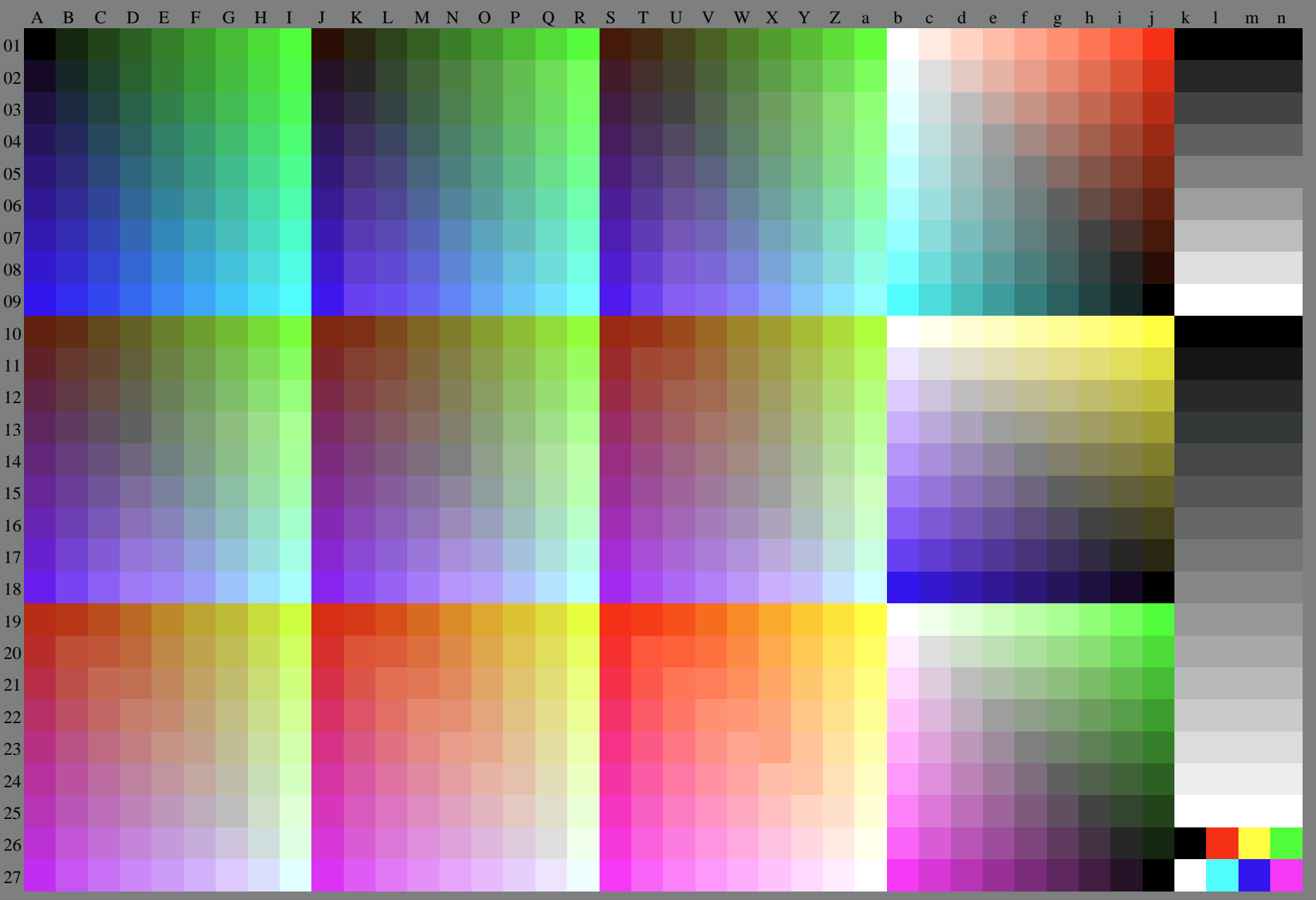


grafico TUB-RI78; 1080 colori standard, cf=0,9
grafico conformemente a DIN 33872, 3D=1, de=0, rgb*

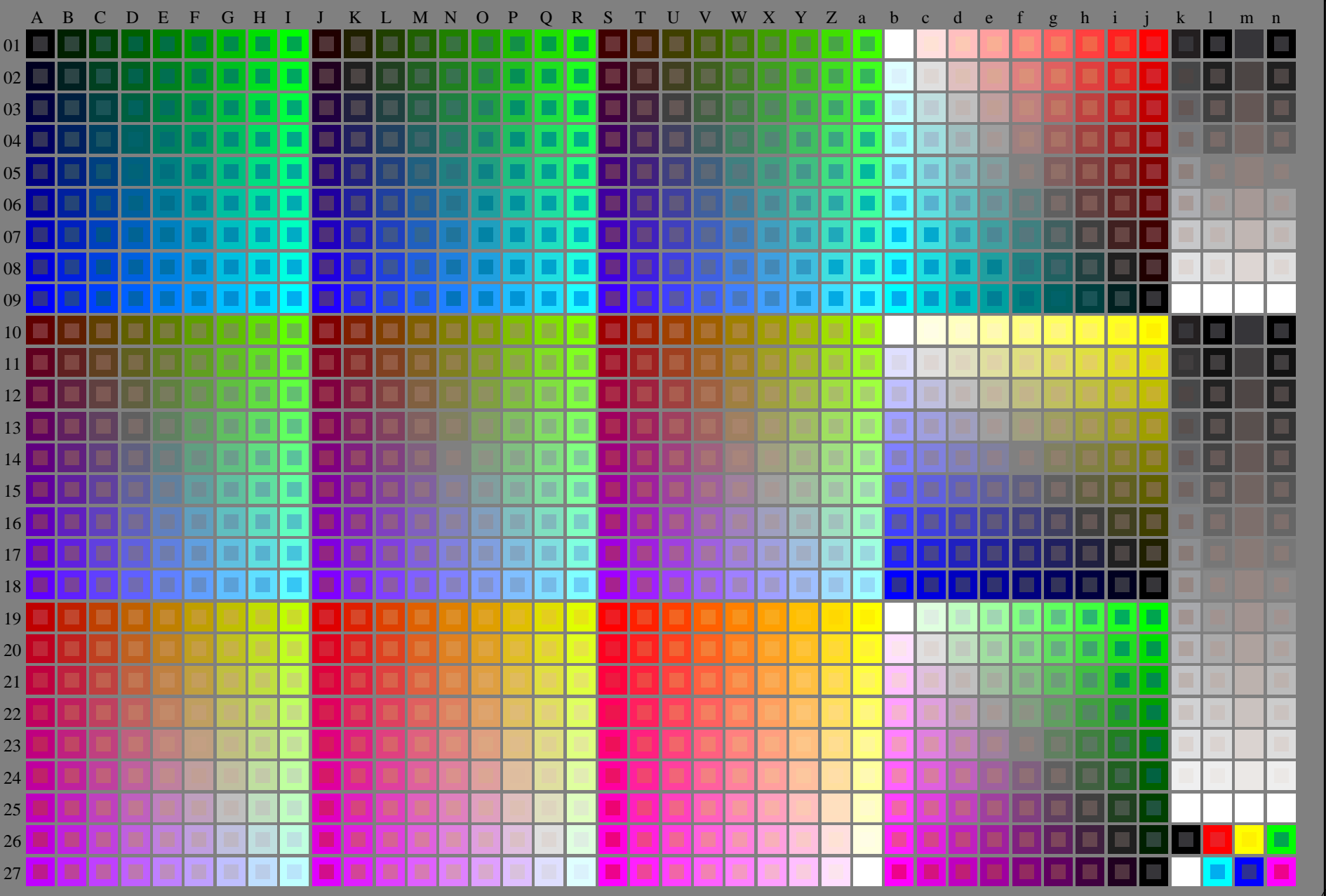
immettree: rgb/cmyk -> rgb_{dd}
uscita: 3D-linearizzazione a rgb*_{dd}



vedere dei file simili: <http://130.149.60.45/~farbmetrik/RI78/RI78L0FA.TXT>
informazioni tecniche: <http://www.ps.bam.de> o <http://130.149.60.45/~farbmetrik>

TUB iscrizione: 20150701-RI78/RI78L0FA.TXT /.PS
la domanda per la misura di stampa di display

TUB materiale: code=rh4ta

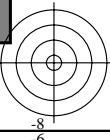
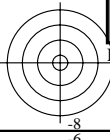


RI780-7N_RGB 4-113034-L0

rgb (A_j + k26_n27), 000n (k), w (l), nnn0 (m), www (n), 3D = 1

grafico TUB-RI78; 1080 colori standard, cf=0,9
grafico conformemente a DIN 33872

immettree: rgb/cmyk -> rgb/cmyk
uscita: nessun cambiamento





vedere dei file simili: <http://130.149.60.45/~farbmetrik/RI78/RI78L0FA.TXT /.PS>
informazioni tecniche: <http://www.ps.bam.de> o <http://130.149.60.45/~farbmetrik>

TUB iscrizione: 20150701-RI78/RI78L0FA.TXT /.PS
la domanda per la misura di stampa di display, nessuna separazione rgb* (RGB)
TUB materiale: code=rh4ta

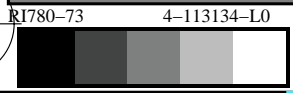
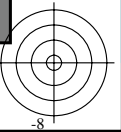
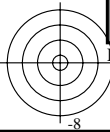
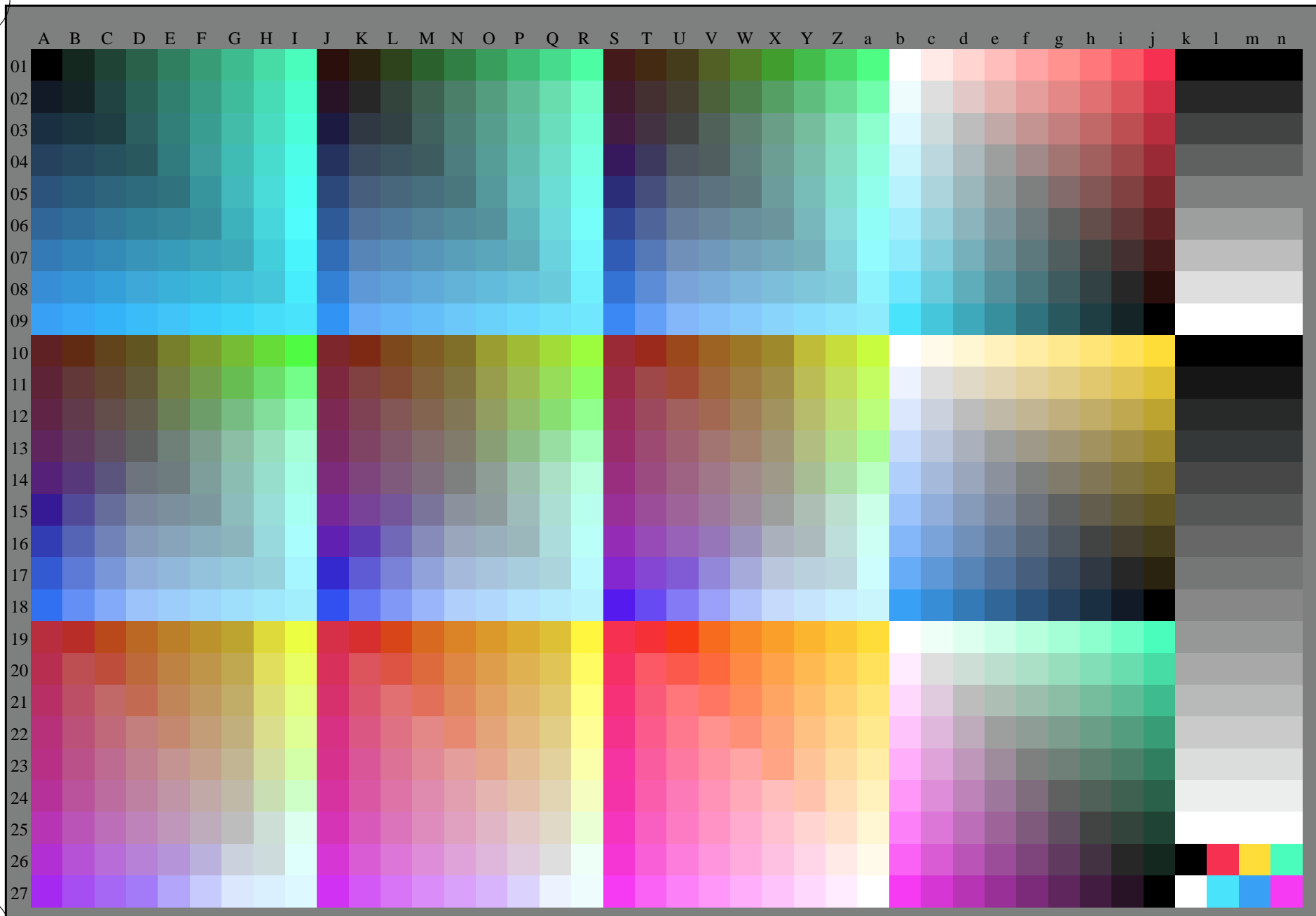


grafico TUB-RI78; 1080 colori standard, $cf=0,9$
grafico conformemente a DIN 33872, 3D=1, $de=1$, rgb^*

immettree: $rgb/cmyk \rightarrow rgb_{de}$
uscita: 3D-linearizzazione a rgb^*_{de}

