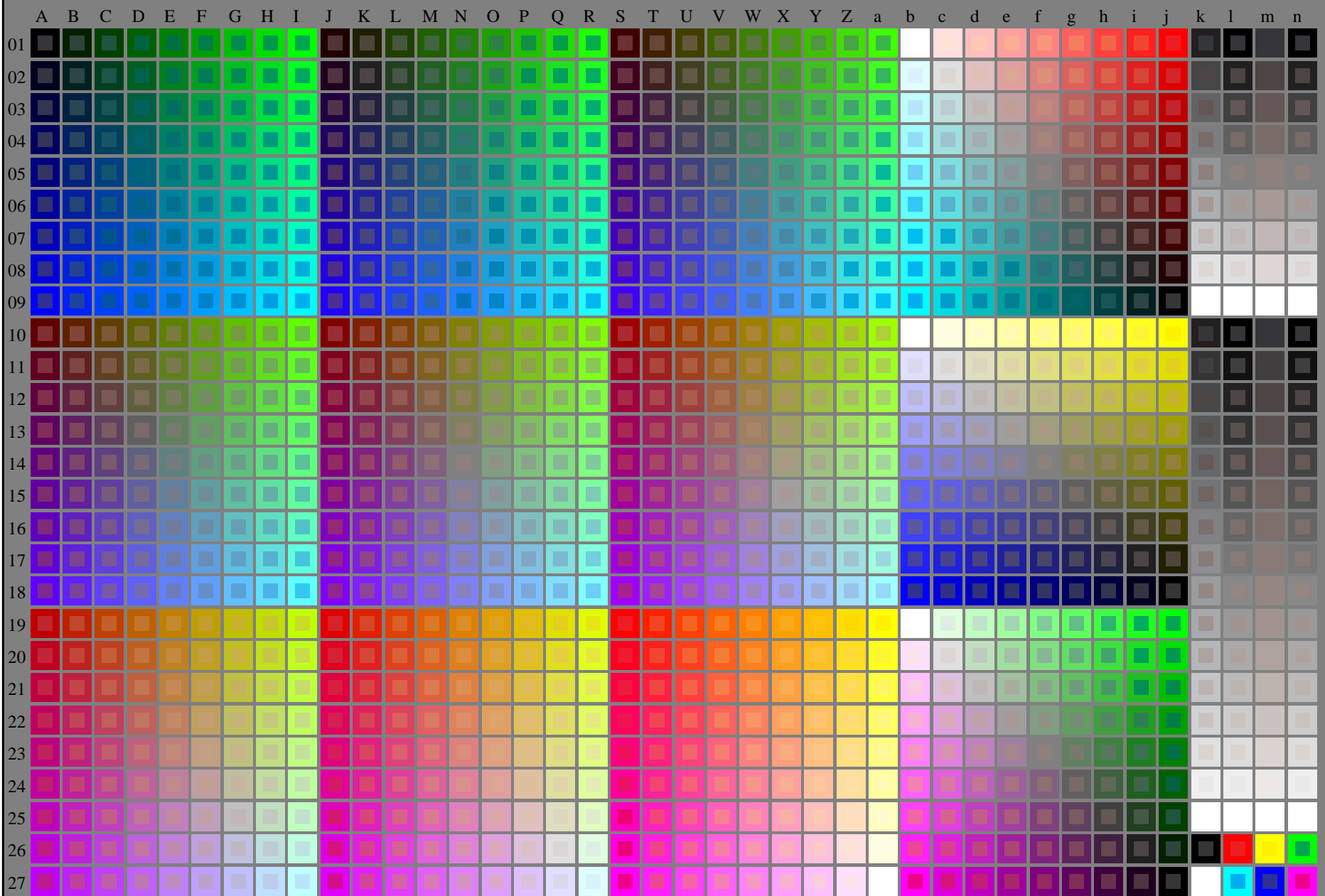


vedere dei file simili: <http://130.149.60.45/~farbmetrik/RI60/RI60.HTM>
informazioni tecniche: <http://www.ps.bam.de> o <http://130.149.60.45/~farbmetrik>



RI600-7N_RGB 4-103034-L0

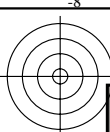
rgb (A_j + k26_n27), 000n (k), w (l), nnn0 (m), www (n), 3D = 1

grafico TUB-RI60; 1080 colori standard, cf=1
grafico conformemente a DIN 33872

immettree: *rgb/cmyk* -> *rgb/cmyk*
uscita: nessun cambiamento

TUB iscrizione: 20150701-RI60/RI60L0FP.PDF /.PS
la domanda per la misura di uscita della stampante laser

TUB materiale: code=rh4ta



vedere dei file simili: <http://130.149.60.45/~farbmetrik/RI60/RI60.HTM>
informazioni tecniche: <http://www.ps.bam.de> o <http://130.149.60.45/~farbmetrik>

TUB iscrizione: 20150701-RI60/RI60L0FP.PDF /.PS
la domanda per la misura di uscita della stampante laser, nessuna separazione rgb* (RGB)

TUB materiale: code=rh4ta

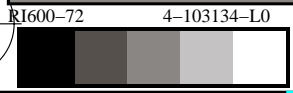
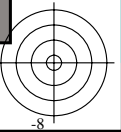
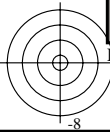
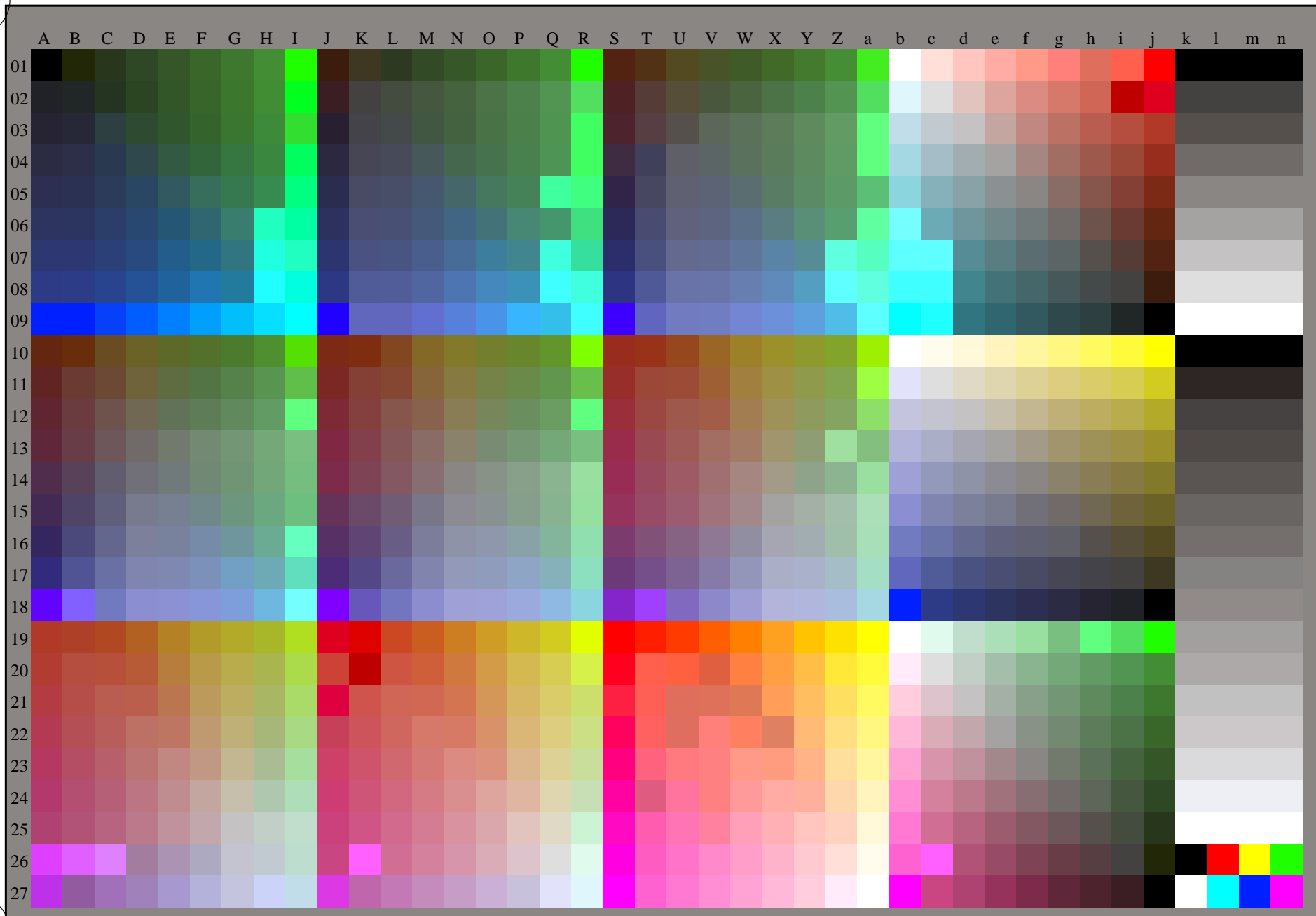
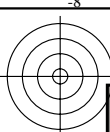


grafico TUB-RI60; 1080 colori standard, cf=1
grafico conformemente a DIN 33872, 3D=1, de=0, rgb*

immettree: rgb/cmyk -> rgb_{dd}
uscita: 3D-linearizzazzione a rgb*_{dd}





vedere dei file simili: <http://130.149.60.45/~farbmetrik/RI60/RI60.HTM>
informazioni tecniche: <http://www.ps.bam.de> o <http://130.149.60.45/~farbmetrik>

TUB iscrizione: 20150701-RI60/RI60L0FP.PDF /.PS
la domanda per la misura di uscita della stampante laser, nessuna separazione rgb* (RGB)
TUB materiale: code=rh4ta

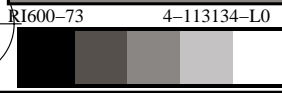
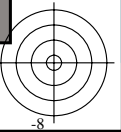
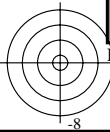
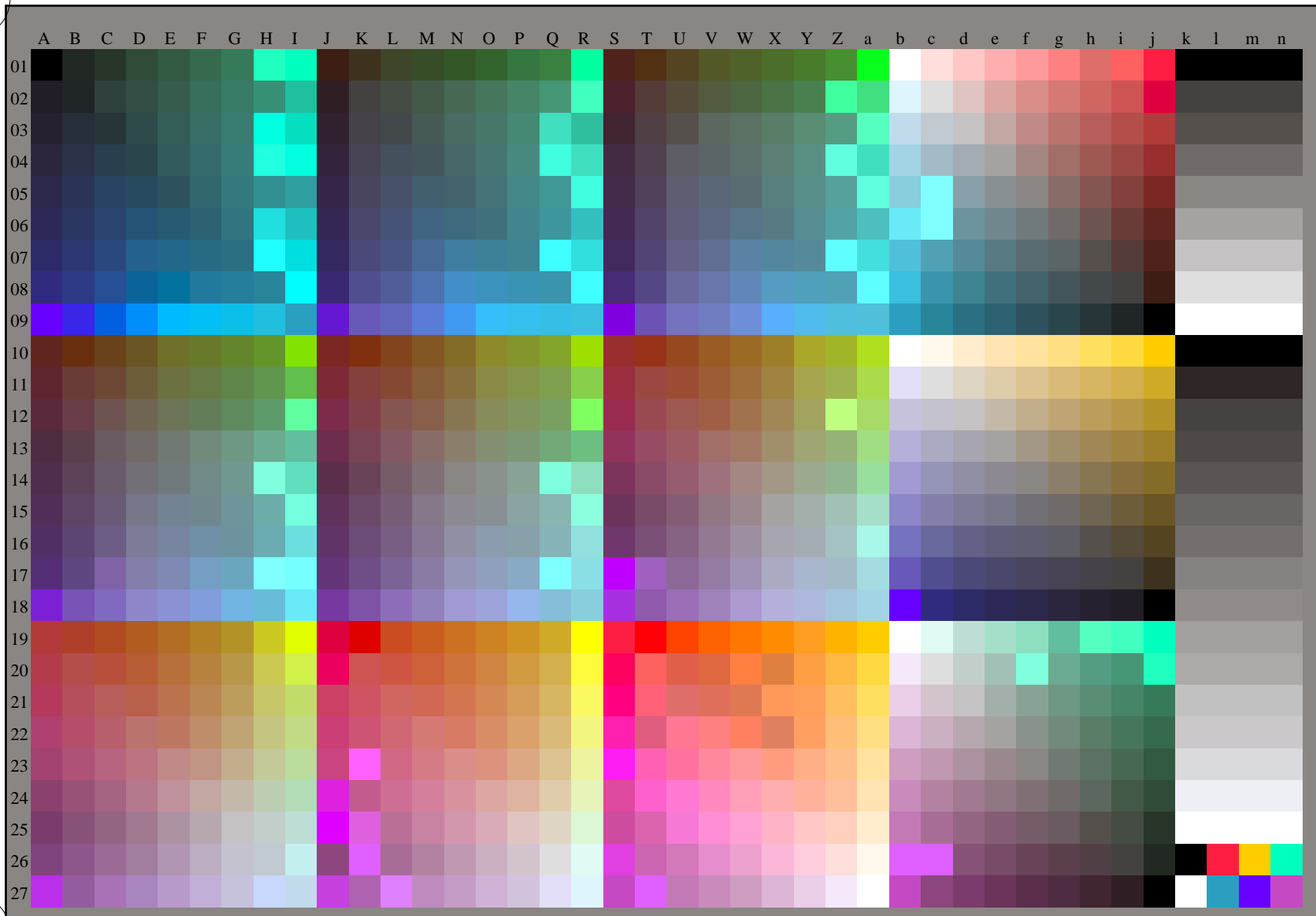


grafico TUB-RI60; 1080 colori standard, cf=1
grafico conformemente a DIN 33872, 3D=1, de=1, rgb*

immettree: $rgb/cmyk \rightarrow rgb_{de}$
uscita: 3D-linearizzazzione a rgb^*_{de}

