

Immettere y uscita: Offset Reflective System ORS18a for relative CIELAB hue $h_{ab,a,rel} = h_{ab}/360 = 353/360 = 0.98$

$H^*_ = B50R_$

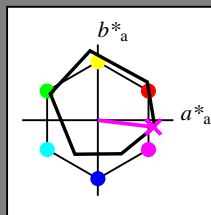
Dati del dispositivo (d) o colori elementari (e):

$HIC^*_$

codice di tonalità per i colori questa pagina:

$H^*_ = B50R_$

triangolo chiarezza T^*



ORS18a; dati atti CIELAB (a)

name	$L^*=L^*_a a^*_a$	b^*_a	$C^*_{ab,a}$	$h^*_{ab,a}$	
R _{-,Ma}	47.9	65.3	50.5	82.6	37
Y _{-,Ma}	90.3	-10.2	91.7	92.3	96
G _{-,Ma}	50.9	-62.8	34.9	71.9	150
C _{-,Ma}	58.6	-30.3	-45.0	54.2	236
B _{-,Ma}	25.7	31.0	-44.4	54.2	305
M _{-,Ma}	48.1	75.2	-8.3	75.7	353
N _{-,Ma}	18.0	0.0	0.0	0.0	0
W _{-,Ma}	95.4	0.0	0.0	0.0	0
R _{-,CIE}	39.9	58.7	27.9	65.0	25
Y _{-,CIE}	81.2	-2.8	71.5	71.6	92
G _{-,CIE}	52.2	-42.4	13.6	44.5	162
B _{-,CIE}	30.5	1.4	-46.4	46.4	271

Il dati per il massimo colore (Ma):

$LabCh^*_{-,Ma}$: 49 73 -9 74 353

$HIC^*_{-,Ma}$: B50R_100_100_

$rgbic^*_{-,Ma}$:

1.0 0.0 1.0 1.0 1.0

triangolo chiarezza T^*

%Gamma

$u^*_{rel} = 92$

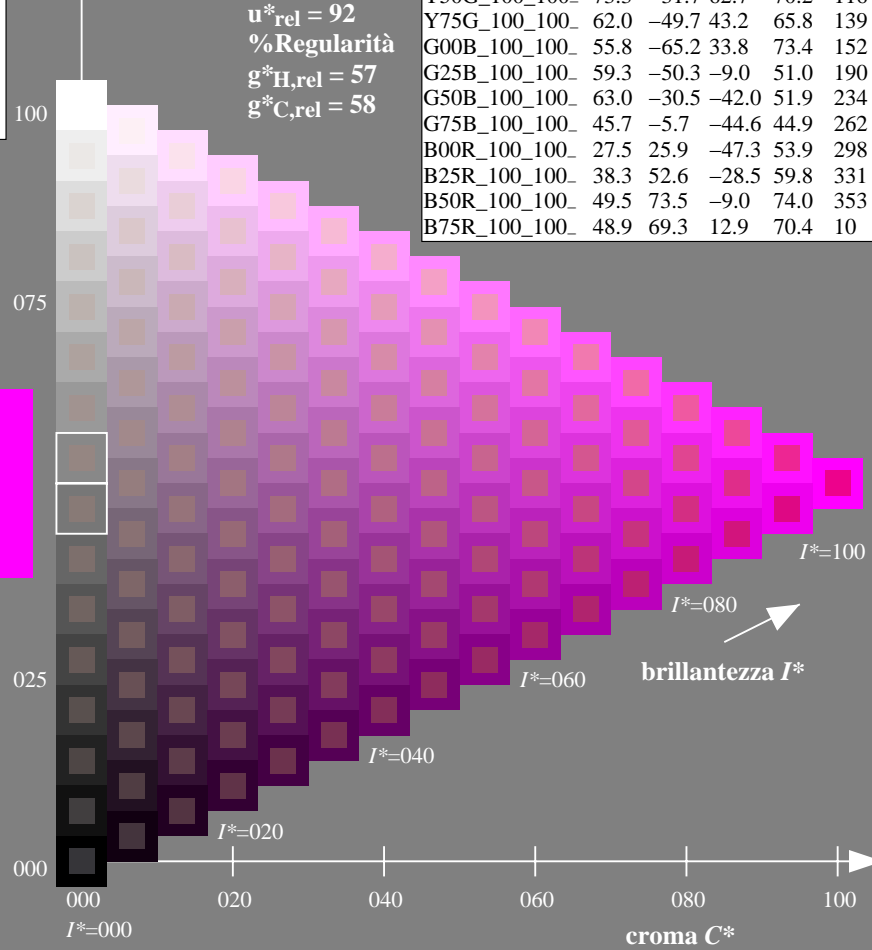
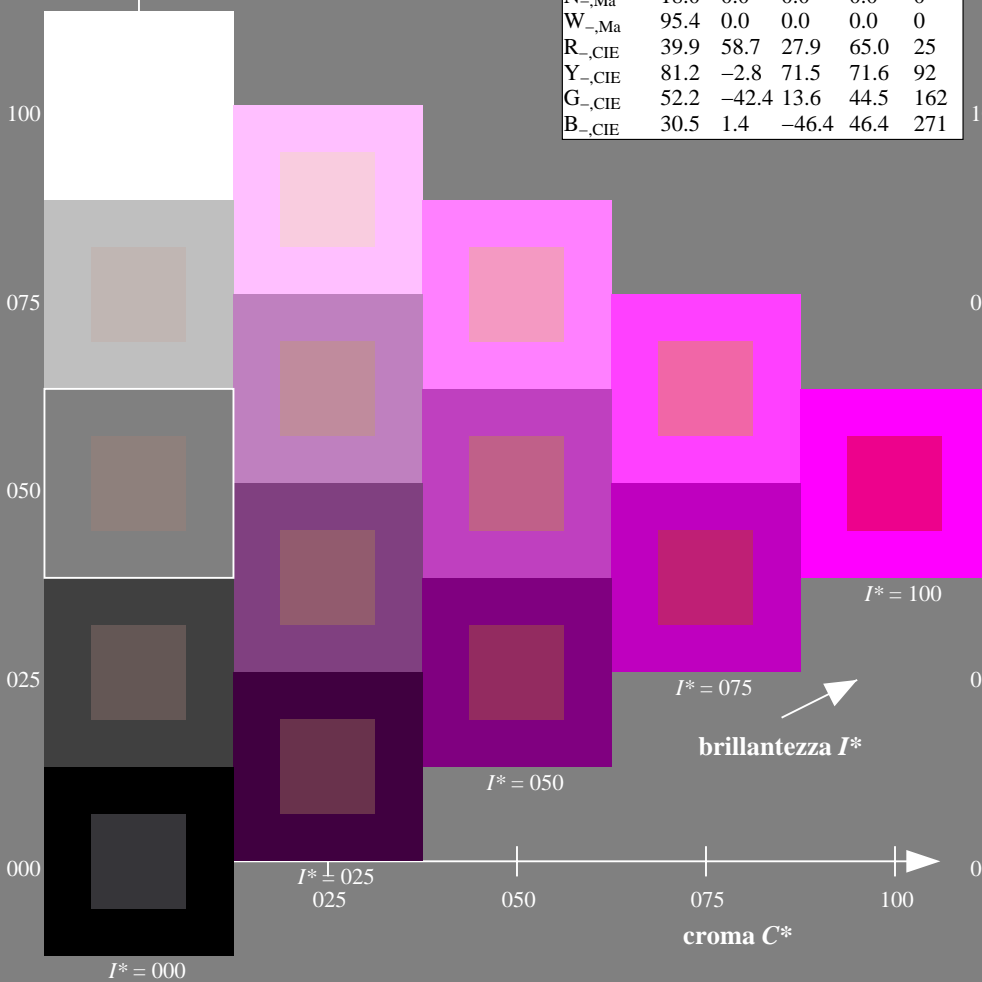
%Regularità

$g^*_H,rel = 57$

$g^*_C,rel = 58$

ORS20a; dati atti CIELAB (a)

$H^*_$	$L^*=L^*_a a^*_a$	b^*_a	$C^*_{ab,a}$	$h^*_{ab,a}$	
R00Y_100_100_	48.4	66.1	40.2	77.3	31
R25Y_100_100_	56.8	48.0	50.5	69.6	46
R50Y_100_100_	68.6	25.0	63.9	68.6	68
R75Y_100_100_	80.6	4.8	77.2	77.3	86
Y00G_100_100_	90.2	-9.6	88.2	88.7	96
Y25G_100_100_	83.2	-18.4	79.9	81.9	102
Y50G_100_100_	73.3	-31.7	62.7	70.2	116
Y75G_100_100_	62.0	-49.7	43.2	65.8	139
G00B_100_100_	55.8	-65.2	33.8	73.4	152
G25B_100_100_	59.3	-50.3	-9.0	51.0	190
G50B_100_100_	63.0	-30.5	-42.0	51.9	234
G75B_100_100_	45.7	-5.7	-44.6	44.9	262
B00R_100_100_	27.5	25.9	-47.3	53.9	298
B25R_100_100_	38.3	52.6	-28.5	59.8	331
B50R_100_100_	49.5	73.5	-9.0	74.0	353
B75R_100_100_	48.9	69.3	12.9	70.4	10



vedere dei file simili: <http://130.149.60.45/~farbmetrik/RI37/RI37L0FP.PDF> / .PS
 informazioni tecniche: <http://www.ps.bam.de> o <http://130.149.60.45/~farbmetrik>

TUB iscrizione: 20130201-RI37/RI37L0FP.PDF /.PS
 la domanda per la misura uscita nella stampa di offset

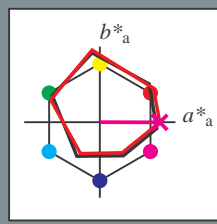
TUB materiale: code=rh4ta

Immettere y uscita: Offset Reflective System ORS18a for relative CIELAB hue $h_{ab,a,rel} = h_{ab}/360 = 359/360 = 0.99$

$H^*_d = B50R_d$

Dati del dispositivo (d) o colori elementari (e):
 HIC^*_d

codice di tonalità per i colori questa pagina:
 $H^*_d = B50R_d$
triangolo chiarezza T^*



ORS20a; dati atti CIELAB (a)

name	$L^*=L^*_a$	a^*_a	b^*_a	$C^*_{ab,a}$	$h^*_{ab,a}$
R _{d,Ma}	45.4	70.9	44.8	83.9	32
Y _{d,Ma}	87.8	-10.2	95.4	96.0	96
G _{d,Ma}	50.0	-65.0	29.6	71.4	155
C _{d,Ma}	56.8	-25.5	-41.5	48.7	238
B _{d,Ma}	25.0	29.5	-40.4	50.0	306
M _{d,Ma}	46.1	79.3	-0.2	79.3	359
N _{d,Ma}	24.3	0.0	0.0	0.0	0
W _{d,Ma}	95.6	0.0	0.0	0.0	0
R _{d,CIE}	39.9	58.7	27.9	65.0	25
Y _{d,CIE}	81.2	-2.8	71.5	71.6	92
G _{d,CIE}	52.2	-42.4	13.6	44.5	162
B _{d,CIE}	30.5	1.4	-46.4	46.4	271

Il dati per il massimo colore (Ma):

$LabCh^*_{d,Ma}$: 46 79 0 79 359

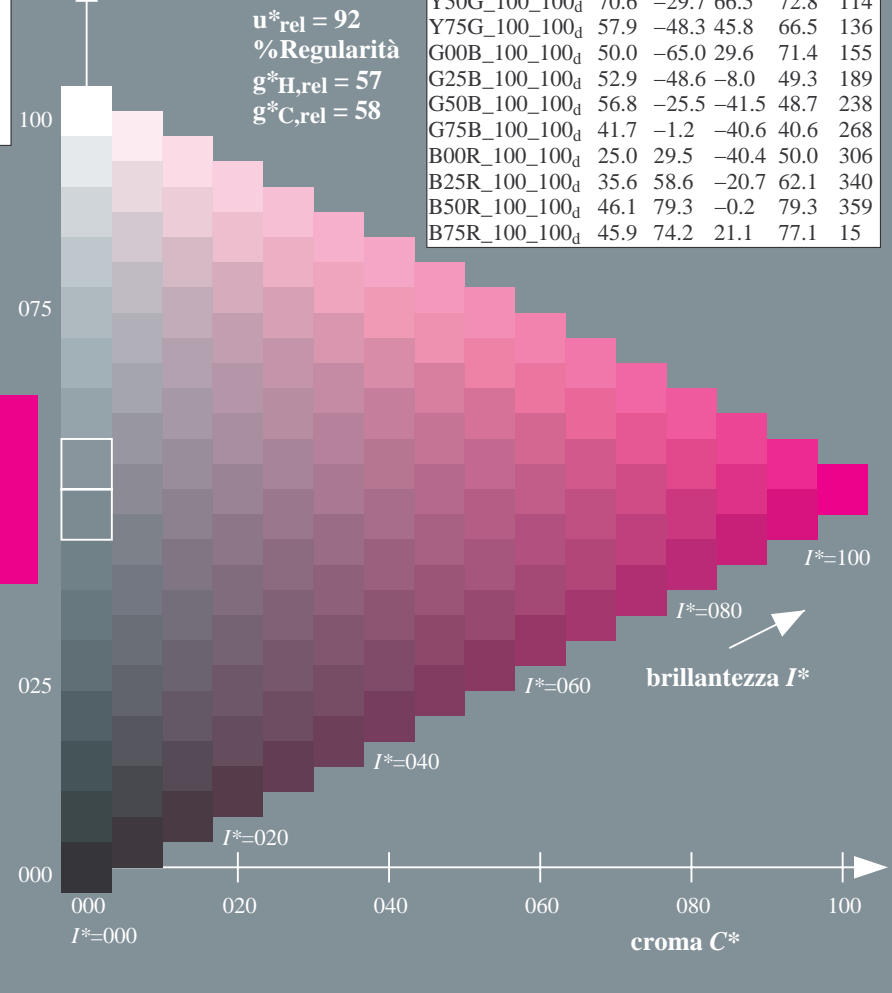
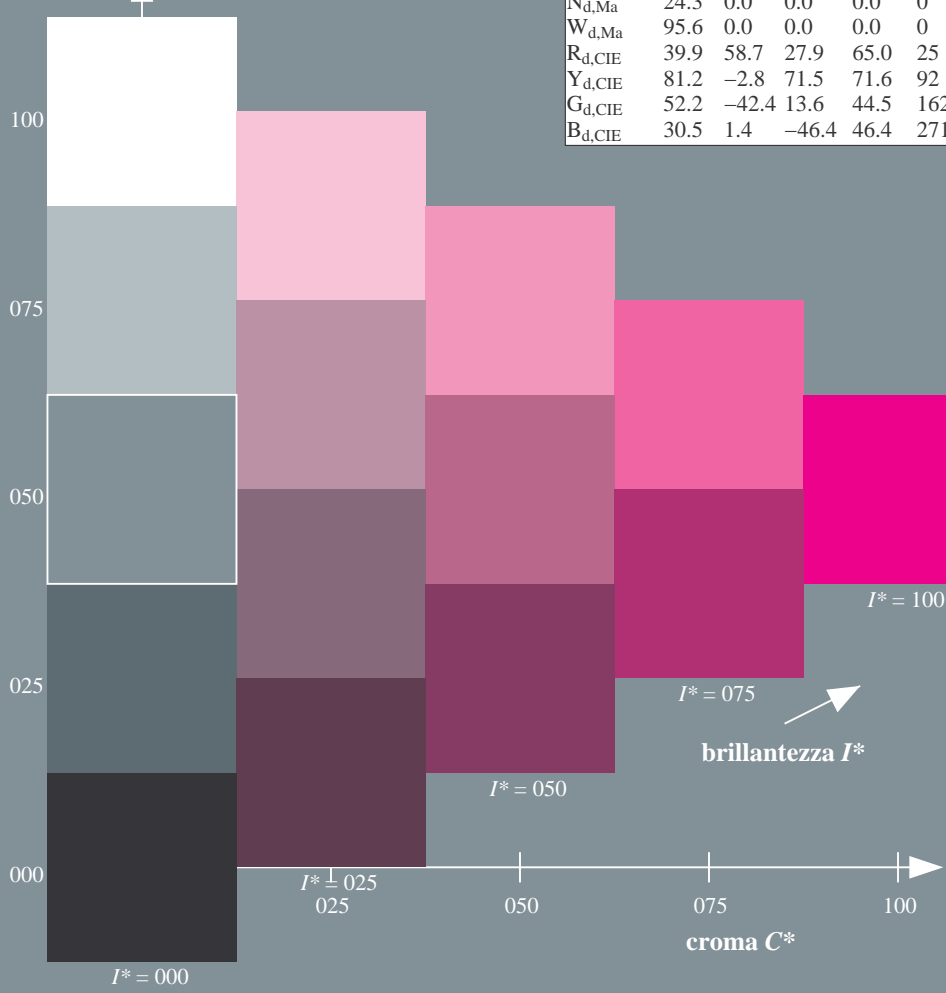
$HIC^*_{d,Ma}$: B50R_100_100_d

$rgbic^*_{d,Ma}$:
1.0 0.0 1.0 1.0 1.0

triangolo chiarezza T^*

ORS20a; dati atti CIELAB (a)

H^*_d	$L^*=L^*_a$	a^*_a	b^*_a	$C^*_{ab,a}$	$h^*_{ab,a}$
R00Y_100_100 _d	45.4	70.9	44.8	83.9	32
R25Y_100_100 _d	53.0	53.4	54.8	76.5	45
R50Y_100_100 _d	64.9	28.9	68.6	74.5	67
R75Y_100_100 _d	78.6	4.3	84.7	84.8	87
Y00G_100_100 _d	87.8	-10.2	95.4	96.0	96
Y25G_100_100 _d	81.2	-17.0	84.3	86.0	101
Y50G_100_100 _d	70.6	-29.7	66.5	72.8	114
Y75G_100_100 _d	57.9	-48.3	45.8	66.5	136
G00B_100_100 _d	50.0	-65.0	29.6	71.4	155
G25B_100_100 _d	52.9	-48.6	-8.0	49.3	189
G50B_100_100 _d	56.8	-25.5	-41.5	48.7	238
G75B_100_100 _d	41.7	-1.2	-40.6	40.6	268
B00R_100_100 _d	25.0	29.5	-40.4	50.0	306
B25R_100_100 _d	35.6	58.6	-20.7	62.1	340
B50R_100_100 _d	46.1	79.3	-0.2	79.3	359
B75R_100_100 _d	45.9	74.2	21.1	77.1	15



%Gamma
 $u^*_{rel} = 92$
%Regularità
 $g^*_{H,rel} = 57$
 $g^*_{C,rel} = 58$

vedere dei file simili: <http://130.149.60.45/~farbmetrik/RI37/RI37.HTM>
informazioni tecniche: <http://www.ps.bam.de> o <http://130.149.60.45/~farbmetrik>

TUB iscrizione: 20130201-RI37/RI37L0FP.PDF /.PS
la domanda per la misura uscita nella stampa di offset, separazione cmy0* (CMY0)
TUB materiale: code=rh4ta

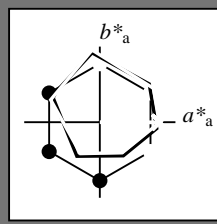


Immettere y uscita: Offset Reflective System ORS18a for relative CIELAB hue $h_{ab,a,rel} = h_{ab}/360 = 359/360 = 0.99$

$H^*_d = B50R_d$

Dati del dispositivo (d) o colori elementari (e):
 HIC^*_d

codice di tonalità per i colori questa pagina:
 $H^*_d = B50R_d$
triangolo chiarezza T^*



ORS20a; dati atti CIELAB (a)

name	$L^*=L^*_a$	a^*_a	b^*_a	$C^*_{ab,a}$	$h^*_{ab,a}$
R _{d,Ma}	45.4	70.9	44.8	83.9	32
Y _{d,Ma}	87.8	-10.2	95.4	96.0	96
G _{d,Ma}	50.0	-65.0	29.6	71.4	155
C _{d,Ma}	56.8	-25.5	-41.5	48.7	238
B _{d,Ma}	25.0	29.5	-40.4	50.0	306
M _{d,Ma}	46.1	79.3	-0.2	79.3	359
N _{d,Ma}	24.3	0.0	0.0	0.0	0
W _{d,Ma}	95.6	0.0	0.0	0.0	0
R _{d,CIE}	39.9	58.7	27.9	65.0	25
Y _{d,CIE}	81.2	-2.8	71.5	71.6	92
G _{d,CIE}	52.2	-42.4	13.6	44.5	162
B _{d,CIE}	30.5	1.4	-46.4	46.4	271

Il dati per il massimo colore (Ma):

$LabCh^*_{d,Ma}: 46\ 79\ 0\ 79\ 359$

$HIC^*_{d,Ma}: B50R_100_100_d$

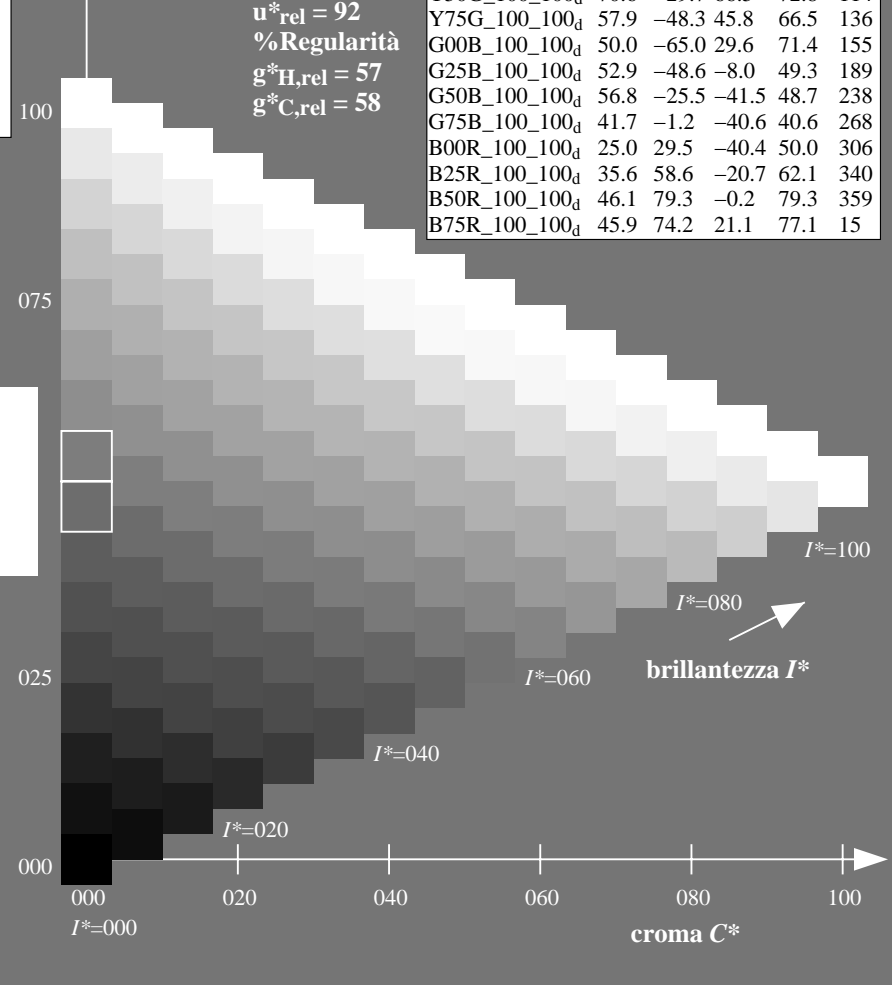
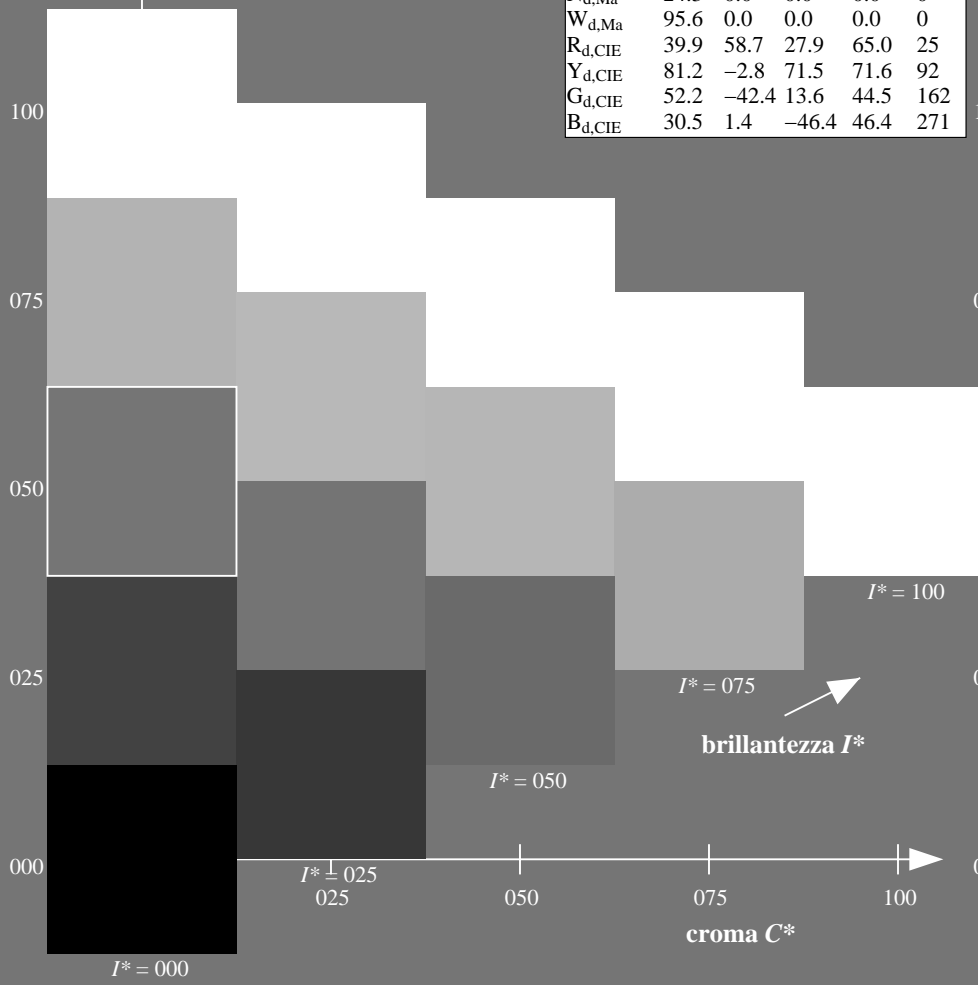
$rgbic^*_{d,Ma}: 1.0\ 0.0\ 1.0\ 1.0\ 1.0$

triangolo chiarezza T^*

ORS20a; dati atti CIELAB (a)

H^*_d	$L^*=L^*_a$	a^*_a	b^*_a	$C^*_{ab,a}$	$h^*_{ab,a}$
R00Y_100_100 _d	45.4	70.9	44.8	83.9	32
R25Y_100_100 _d	53.0	53.4	54.8	76.5	45
R50Y_100_100 _d	64.9	28.9	68.6	74.5	67
R75Y_100_100 _d	78.6	4.3	84.7	84.8	87
Y00G_100_100 _d	87.8	-10.2	95.4	96.0	96
Y25G_100_100 _d	81.2	-17.0	84.3	86.0	101
Y50G_100_100 _d	70.6	-29.7	66.5	72.8	114
Y75G_100_100 _d	57.9	-48.3	45.8	66.5	136
G00B_100_100 _d	50.0	-65.0	29.6	71.4	155
G25B_100_100 _d	52.9	-48.6	-8.0	49.3	189
G50B_100_100 _d	56.8	-25.5	-41.5	48.7	238
G75B_100_100 _d	41.7	-1.2	-40.6	40.6	268
B00R_100_100 _d	25.0	29.5	-40.4	50.0	306
B25R_100_100 _d	35.6	58.6	-20.7	62.1	340
B50R_100_100 _d	46.1	79.3	-0.2	79.3	359
B75R_100_100 _d	45.9	74.2	21.1	77.1	15

%Gamma
 $u^*_{rel} = 92$
%Regularità
 $g^*_H,rel = 57$
 $g^*_C,rel = 58$



vedere dei file simili: <http://130.149.60.45/~farbmetrik/RI37/RI37.HTM>
informazioni tecniche: <http://www.ps.bam.de> o <http://130.149.60.45/~farbmetrik>

TUB iscrizione: 20130201-RI37/RI37L0FP.PDF /.PS
la domanda per la misura uscita nella stampa di offset, separazione cmy0* (CMY0)
TUB materiale: code=rh4ta

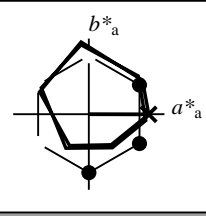


Immettere y uscita: Offset Reflective System ORS18a for relative CIELAB hue $h_{ab,a,rel} = h_{ab}/360 = 359/360 = 0.99$

$H^*_d = B50R_d$

Dati del dispositivo (d) o colori elementari (e):
 HIC^*_d

codice di tonalità per i colori questa pagina:
 $H^*_d = B50R_d$
triangolo chiarezza T^*



ORS20a; dati atti CIELAB (a)

name	$L^*=L^*_a a^*_a$	b^*_a	$C^*_{ab,a}$	$h^*_{ab,a}$
R _{d, Ma}	45.4	70.9	44.8	83.9
Y _{d, Ma}	87.8	-10.2	95.4	96.0
G _{d, Ma}	50.0	-65.0	29.6	71.4
C _{d, Ma}	56.8	-25.5	-41.5	48.7
B _{d, Ma}	25.0	29.5	-40.4	50.0
M _{d, Ma}	46.1	79.3	-0.2	79.3
N _{d, Ma}	24.3	0.0	0.0	0.0
W _{d, Ma}	95.6	0.0	0.0	0.0
R _{d, CIE}	39.9	58.7	27.9	65.0
Y _{d, CIE}	81.2	-2.8	71.5	71.6
G _{d, CIE}	52.2	-42.4	13.6	44.5
B _{d, CIE}	30.5	1.4	-46.4	46.4

Il dati per il massimo colore (Ma):

$LabCh^*_{d, Ma} : 46\ 79\ 0\ 79\ 359$

$HIC^*_{d, Ma} : B50R_100_100_d$

$rgbic^*_{d, Ma} :$

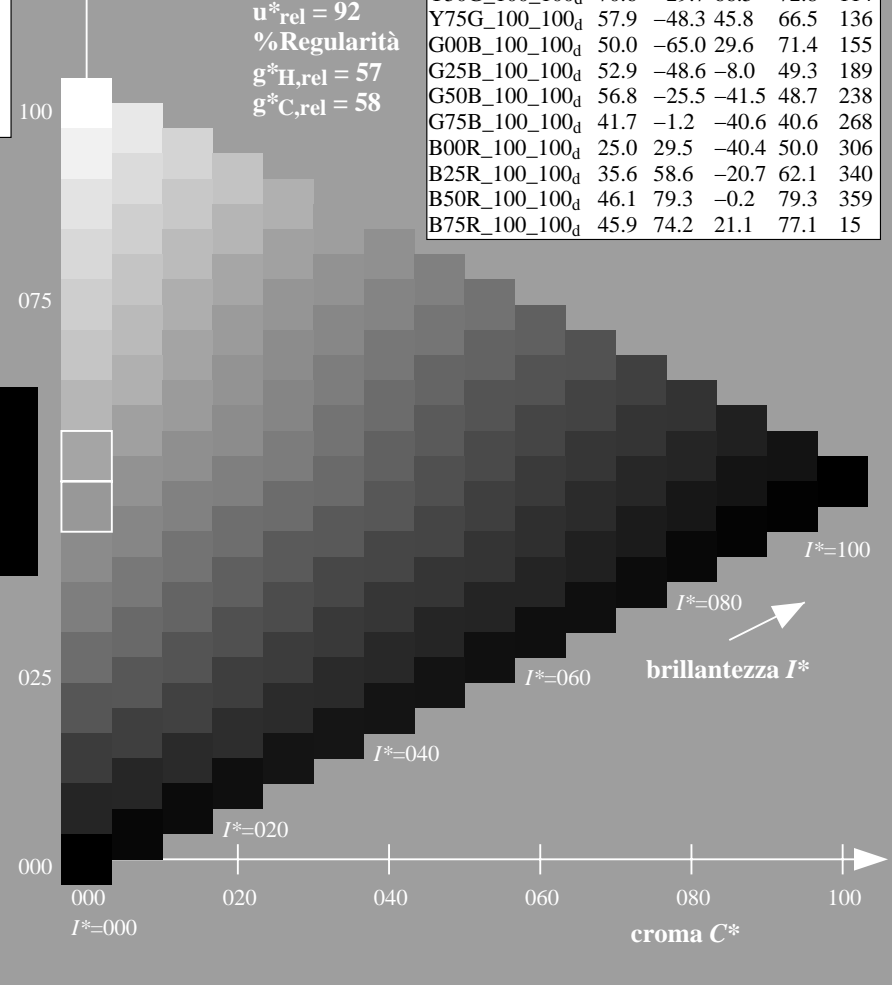
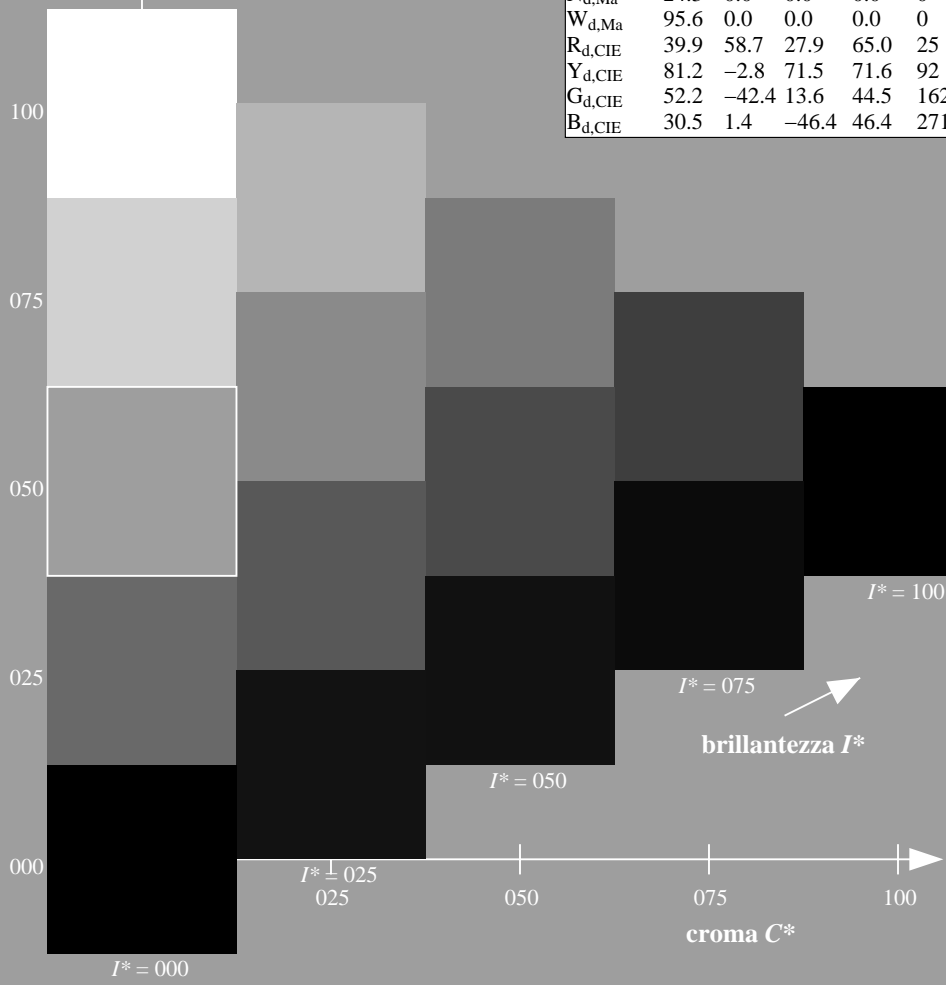
1.0 0.0 1.0 1.0 1.0

triangolo chiarezza T^*

ORS20a; dati atti CIELAB (a)

H^*_d	$L^*=L^*_a a^*_a$	b^*_a	$C^*_{ab,a}$	$h^*_{ab,a}$
R00Y_100_100 _d	45.4	70.9	44.8	83.9
R25Y_100_100 _d	53.0	53.4	54.8	76.5
R50Y_100_100 _d	64.9	28.9	68.6	74.5
R75Y_100_100 _d	78.6	4.3	84.7	84.8
Y00G_100_100 _d	87.8	-10.2	95.4	96.0
Y25G_100_100 _d	81.2	-17.0	84.3	86.0
Y50G_100_100 _d	70.6	-29.7	66.5	72.8
Y75G_100_100 _d	57.9	-48.3	45.8	66.5
G00B_100_100 _d	50.0	-65.0	29.6	71.4
G25B_100_100 _d	52.9	-48.6	-8.0	49.3
G50B_100_100 _d	56.8	-25.5	-41.5	48.7
G75B_100_100 _d	41.7	-1.2	-40.6	40.6
B00R_100_100 _d	25.0	29.5	-40.4	50.0
B25R_100_100 _d	35.6	58.6	-20.7	62.1
B50R_100_100 _d	46.1	79.3	-0.2	79.3
B75R_100_100 _d	45.9	74.2	21.1	77.1

%Gamma
 $u^*_{rel} = 92$
%Regularità
 $g^*_{H,rel} = 57$
 $g^*_{C,rel} = 58$

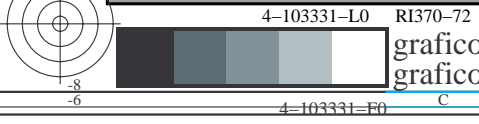


vedere dei file simili: <http://130.149.60.45/~farbmetrik/RI37/RI37.HTM>
informazioni tecniche: <http://www.ps.bam.de> o <http://130.149.60.45/~farbmetrik>

TUB iscrizione: 20130201-RI37/RI37L0FP.PDF /.PS
la domanda per la misura uscita nella stampa di offset, separazione cmy0* (CMY0)
TUB materiale: code=rh4ta

grafico TUB-RI37; codice di tinte: $H^*_d=B50R_d$
grafico conformemente a DIN 33872, 3D=1, de=0, $cmy0^*$

immettere: $rgb/cmyk \rightarrow rgb_{dd}$
uscita: 3D-linearizzazione a $cmy0^*_{dd}$

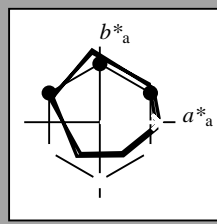


Immettere y uscita: Offset Reflective System ORS18a for relative CIELAB hue $h_{ab,a,rel} = h_{ab}/360 = 359/360 = 0.99$

$H^*_d = B50R_d$

Dati del dispositivo (d) o colori elementari (e):
 HIC^*_d

codice di tonalità per i colori questa pagina:
 $H^*_d = B50R_d$
triangolo chiarezza T^*



ORS20a; dati atti CIELAB (a)

name	$L^*=L^*_a$	a^*_a	b^*_a	$C^*_{ab,a}$	$h^*_{ab,a}$
R _{d,Ma}	45.4	70.9	44.8	83.9	32
Y _{d,Ma}	87.8	-10.2	95.4	96.0	96
G _{d,Ma}	50.0	-65.0	29.6	71.4	155
C _{d,Ma}	56.8	-25.5	-41.5	48.7	238
B _{d,Ma}	25.0	29.5	-40.4	50.0	306
M _{d,Ma}	46.1	79.3	-0.2	79.3	359
N _{d,Ma}	24.3	0.0	0.0	0.0	0
W _{d,Ma}	95.6	0.0	0.0	0.0	0
R _{d,CIE}	39.9	58.7	27.9	65.0	25
Y _{d,CIE}	81.2	-2.8	71.5	71.6	92
G _{d,CIE}	52.2	-42.4	13.6	44.5	162
B _{d,CIE}	30.5	1.4	-46.4	46.4	271

Il dati per il massimo colore (Ma):

$LabCh^*_d, Ma: 46\ 79\ 0\ 79\ 359$

$HIC^*_d, Ma: B50R_100_100_d$

$rgbic^*_d, Ma:$

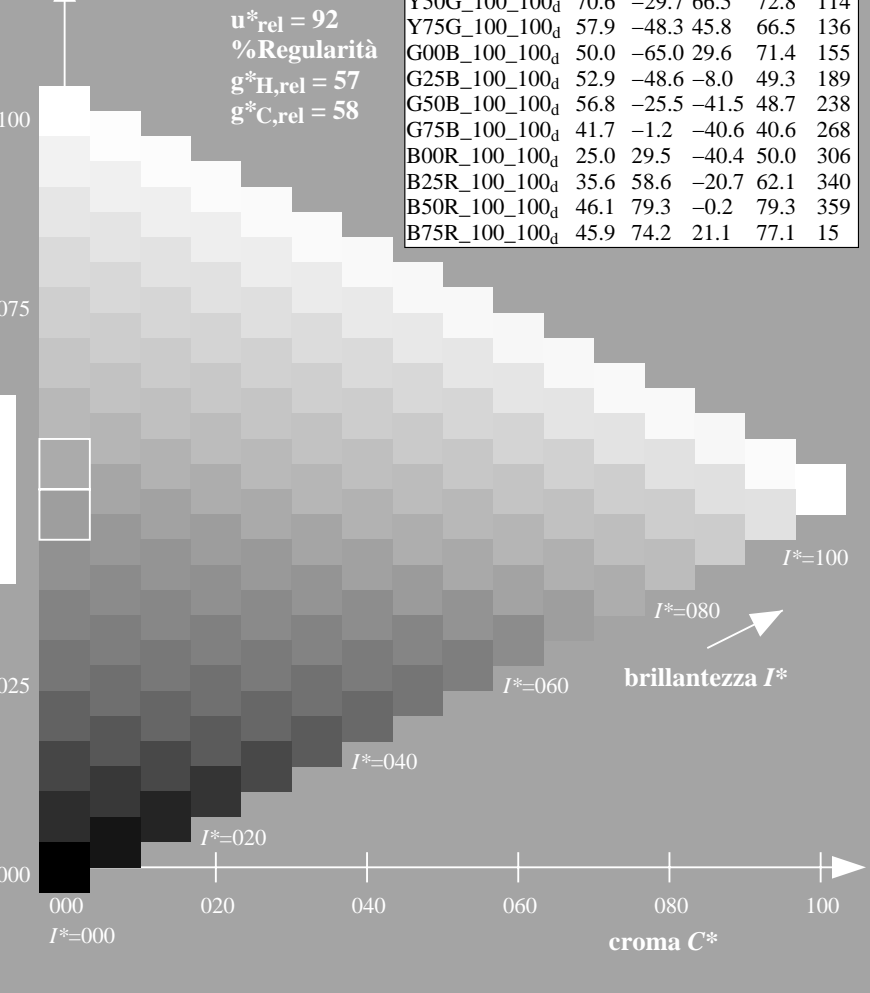
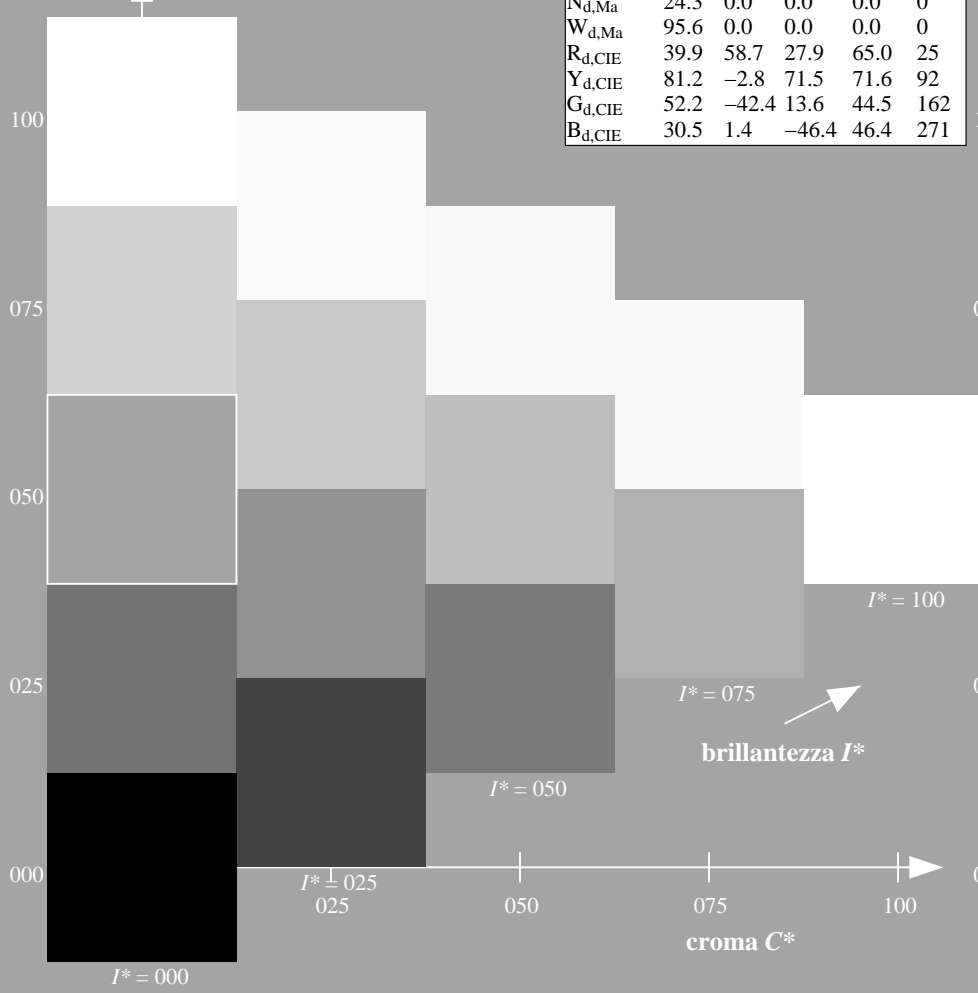
1.0 0.0 1.0 1.0 1.0

triangolo chiarezza T^*

%Gamma
 $u^*_{rel} = 92$
%Regularità
 $g^*_{H,rel} = 57$
 $g^*_{C,rel} = 58$

ORS20a; dati atti CIELAB (a)

H^*_d	$L^*=L^*_a$	a^*_a	b^*_a	$C^*_{ab,a}$	$h^*_{ab,a}$
R00Y_100_100 _d	45.4	70.9	44.8	83.9	32
R25Y_100_100 _d	53.0	53.4	54.8	76.5	45
R50Y_100_100 _d	64.9	28.9	68.6	74.5	67
R75Y_100_100 _d	78.6	4.3	84.7	84.8	87
Y00G_100_100 _d	87.8	-10.2	95.4	96.0	96
Y25G_100_100 _d	81.2	-17.0	84.3	86.0	101
Y50G_100_100 _d	70.6	-29.7	66.5	72.8	114
Y75G_100_100 _d	57.9	-48.3	45.8	66.5	136
G00B_100_100 _d	50.0	-65.0	29.6	71.4	155
G25B_100_100 _d	52.9	-48.6	-8.0	49.3	189
G50B_100_100 _d	56.8	-25.5	-41.5	48.7	238
G75B_100_100 _d	41.7	-1.2	-40.6	40.6	268
B00R_100_100 _d	25.0	29.5	-40.4	50.0	306
B25R_100_100 _d	35.6	58.6	-20.7	62.1	340
B50R_100_100 _d	46.1	79.3	-0.2	79.3	359
B75R_100_100 _d	45.9	74.2	21.1	77.1	15



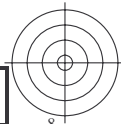
vedere dei file simili: <http://130.149.60.45/~farbmetrik/RI37/RI37.HTM>
informazioni tecniche: <http://www.ps.bam.de> o <http://130.149.60.45/~farbmetrik>

TUB iscrizione: 20130201-RI37/RI37L0FP.PDF /.PS
la domanda per la misura uscita nella stampa di offset, separazione cmy0* (CMY0)
TUB materiale: code=rh4ta



TUB iscrizione: 20130201-RI37/RI37L0FP.PDF /.PS TUB materiale: code=rh4ta
la domanda per la misura uscita nella stampa di offset, separazione cmy0* (CMY0)

vedere dei file simili: <http://130.149.60.45/~farbmetrik/RI37/RI37.HTM>
informazioni tecniche: <http://www.ps.bam.de> o <http://130.149.60.45/~farbmetrik>



4-103531-L0 RI370-72

grafico TUB-RI37; codice di tinte: $H^*_d=B50R_d$
grafico conformemente a DIN 33872, 3D=1, de=0, cmy0*

immettere: $rgb/cmyk \rightarrow rgb_{dd}$
uscita: 3D-linearizzazione a $cmy0^*_{dd}$



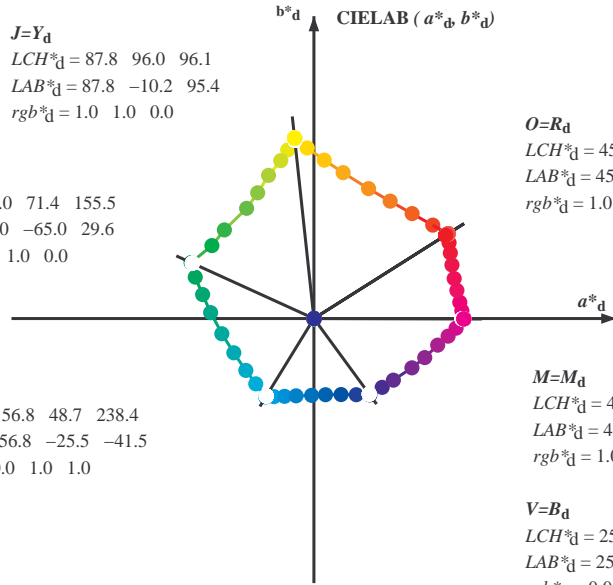
4-103531-F0

Data of Maximum color M in colorimetric system Offset standard print; separation cmy0*, D65 for input or output; Six hue angles of the 60 degree standard colours $RYGCBM_s$: $h_{ab,ds} = 30.0, 90.0, 150.0, 210.0, 270.0, 330.0$; Six hue angles of the device colours $RYGCBM_d$: $h_{ab,d} = 32.3, 96.1, 155.5, 238.4, 306.2, 359.8$; Six hue angles of the elementary colours $RYGCBM_e$: $h_{ab,e} = 25.5, 92.3, 162.2, 217.0, 271.7, 328.6$

$J=Y_d$
 $LCH^*_d = 87.8 \ 96.0 \ 96.1$
 $LAB^*_d = 87.8 \ -10.2 \ 95.4$
 $rgb^*_d = 1.0 \ 1.0 \ 0.0$

$L=G_d$
 $LCH^*_d = 50.0 \ 71.4 \ 155.5$
 $LAB^*_d = 50.0 \ -65.0 \ 29.6$
 $rgb^*_d = 0.0 \ 1.0 \ 0.0$

$C=C_d$
 $LCH^*_d = 56.8 \ 48.7 \ 238.4$
 $LAB^*_d = 56.8 \ -25.5 \ -41.5$
 $rgb^*_d = 0.0 \ 1.0 \ 1.0$



$O=R_d$
 $LCH^*_d = 45.4 \ 83.9 \ 32.3$
 $LAB^*_d = 45.4 \ 70.9 \ 44.8$
 $rgb^*_d = 1.0 \ 0.0 \ 0.0$

$M=M_d$
 $LCH^*_d = 46.1 \ 79.3 \ 359.8$
 $LAB^*_d = 46.1 \ 79.3 \ -0.2$
 $rgb^*_d = 1.0 \ 0.0 \ 1.0$

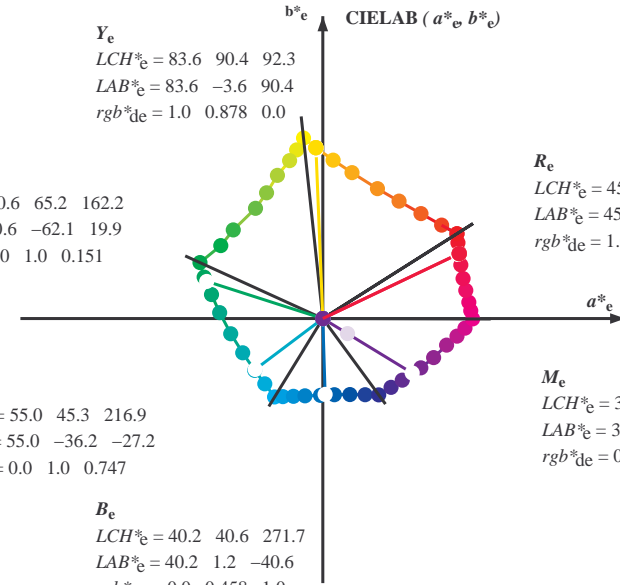
$V=B_d$
 $LCH^*_d = 25.0 \ 50.0 \ 306.2$
 $LAB^*_d = 25.0 \ 29.5 \ -40.4$
 $rgb^*_d = 0.0 \ 0.0 \ 1.0$

Y_e
 $LCH^*_e = 83.6 \ 90.4 \ 92.3$
 $LAB^*_e = 83.6 \ -3.6 \ 90.4$
 $rgb^*_{de} = 1.0 \ 0.878 \ 0.0$

G_e
 $LCH^*_e = 50.6 \ 65.2 \ 162.2$
 $LAB^*_e = 50.6 \ -62.1 \ 19.9$
 $rgb^*_{de} = 0.0 \ 1.0 \ 0.151$

C_e
 $LCH^*_e = 55.0 \ 45.3 \ 216.9$
 $LAB^*_e = 55.0 \ -36.2 \ -27.2$
 $rgb^*_{de} = 0.0 \ 1.0 \ 0.747$

B_e
 $LCH^*_e = 40.2 \ 40.6 \ 271.7$
 $LAB^*_e = 40.2 \ 1.2 \ -40.6$
 $rgb^*_{de} = 0.0 \ 0.458 \ 1.0$



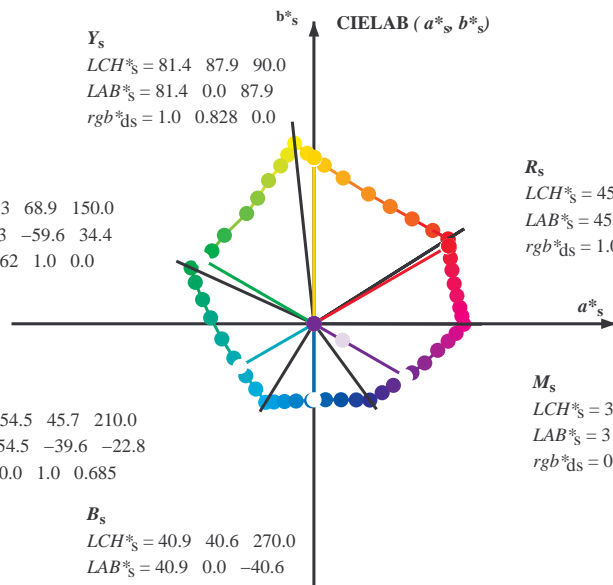
R_e
 $LCH^*_e = 45.6 \ 80.0 \ 25.4$
 $LAB^*_e = 45.6 \ 72.2 \ 34.4$
 $rgb^*_{de} = 1.0 \ 0.0 \ 0.254$

M_e
 $LCH^*_e = 31.1 \ 55.9 \ 328.6$
 $LAB^*_e = 31.1 \ 47.7 \ -29.1$
 $rgb^*_{de} = 0.321 \ 0.0 \ 1.0$

Y_s
 $LCH^*_s = 81.4 \ 87.9 \ 90.0$
 $LAB^*_s = 81.4 \ 0.0 \ 87.9$
 $rgb^*_{ds} = 1.0 \ 0.828 \ 0.0$

G_s
 $LCH^*_s = 52.3 \ 68.9 \ 150.0$
 $LAB^*_s = 52.3 \ -59.6 \ 34.4$
 $rgb^*_{ds} = 0.062 \ 1.0 \ 0.0$

C_s
 $LCH^*_s = 54.5 \ 45.7 \ 210.0$
 $LAB^*_s = 54.5 \ -39.6 \ -22.8$
 $rgb^*_{ds} = 0.0 \ 1.0 \ 0.685$



R_s
 $LCH^*_s = 45.5 \ 82.4 \ 30.0$
 $LAB^*_s = 45.5 \ 71.3 \ 41.2$
 $rgb^*_{ds} = 1.0 \ 0.0 \ 0.096$

M_s
 $LCH^*_s = 31.6 \ 56.5 \ 330.0$
 $LAB^*_s = 31.6 \ 49.0 \ -28.2$
 $rgb^*_{ds} = 0.337 \ 0.0 \ 1.0$

B_s
 $LCH^*_s = 40.9 \ 40.6 \ 270.0$
 $LAB^*_s = 40.9 \ 0.0 \ -40.6$
 $rgb^*_{ds} = 0.0 \ 0.479 \ 1.0$

$(a^*_d, b^*_d), (a^*_s, b^*_s), (a^*_e, b^*_e)$

$rgb^*_d, LCH^*_d, LAB^*_d$
 h_{ab}, rgb^*_d

$$h_{ab,s} = atan [r^*_d \cos(30) + g^*_d \cos(150)] / [r^*_d \sin(30) + g^*_d \sin(150) + b^*_d \sin(270)] \quad (1)$$

$h_{ab,s}$

$s: h_{ab,i} = 30.0, 90.0, 150.0, 210.0, 270.0, 330.0, 390.0 (i=0,6)$

$$h_{48ab,sij} = h_{ab,si} + j [h_{ab,si+1} - h_{ab,si}] / 8 (i = 0, 1, \dots, 5; j = 0, 1, \dots, 7) \quad (2)$$

$$h_{360ab,sij} = h_{ab,si} + j [h_{ab,si+1} - h_{ab,si}] / 60 (i = 0, 1, \dots, 5; j = 0, 1, \dots, 59) \quad (3)$$

$h_{ab,e}$

$e: h_{ab,i} = 25.5, 92.3, 162.2, 217.0, 271.7, 328.6, 385.5 (i=0,6)$

$$h_{48ab,eij} = h_{ab,ei} + j [h_{ab,ei+1} - h_{ab,ei}] / 8 (i = 0, 1, \dots, 5; j = 0, 1, \dots, 7) \quad (4)$$

$$h_{360ab,eij} = h_{ab,ei} + j [h_{ab,ei+1} - h_{ab,ei}] / 60 (i = 0, 1, \dots, 5; j = 0, 1, \dots, 59) \quad (5)$$

$h_{ab}, h_{ab,d}$

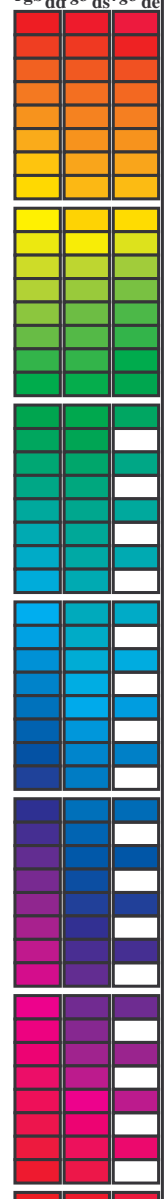
rgb^*_e

TUB iscrizione: 20130201-RI37/RI37L0FP.PDF /PS
 La domanda per la misura uscita nella stampa di offset, separazione cmy0* (CMY0)
 TUB materiale: code=rh4ta

vedere dei file simili: http://130.149.60.45/~farbmetrik/RI37/RI37.HTM
 informazioni tecniche: http://www.ps.bam.de o http://130.149.60.45/~farbmetrik

Data of maximum color M in colorimetric system Offset standard print; separation cmy0*, D65 for input or output; Six hue angles of the 60 degree standard colours RYGBM_s: h_{ab,ds} = 30.0, 90.0, 150.0, 210.0, 270.0, 330.0; Six hue angles of the device colours RYGBM_d: h_{ab,d} = 32.3, 96.1, 155.5, 238.4, 306.2, 359.8; Six hue angles of the elementary colours RYGBM_c: h_{ab,c} = 25.5, 92.3, 162.2, 217.0, 271.7, 328.6

Table with 24 columns: h_{ab,d}, h_{ab,s}, h_{ab,e}, r_{gb}^{dd}, LAB*_{dd}64M, LAB*_{dd}361M, r_{gb}^{ds}, LAB*_{ds}361M, r_{gb}^{de}, LAB*_{de}361M, r_{gb}^{dd}, LAB*_{dd}64M, LAB*_{dd}361M, r_{gb}^{ds}, LAB*_{ds}361M, r_{gb}^{de}, LAB*_{de}361M. Rows contain numerical data for various color points.

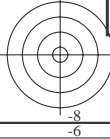


vedere dei file simili: http://130.149.60.45/~farbmetrik/RI37/RI37.HTM
informazioni tecniche: http://www.ps.bam.de o http://130.149.60.45/~farbmetrik

TUB iscrizione: 20130201-RI37/RI37L0FP.PDF /PS
la domanda per la misura uscita nella stampa di offset, separazione cmy0* (CMY0)
TUB materiale: code=rh4ta

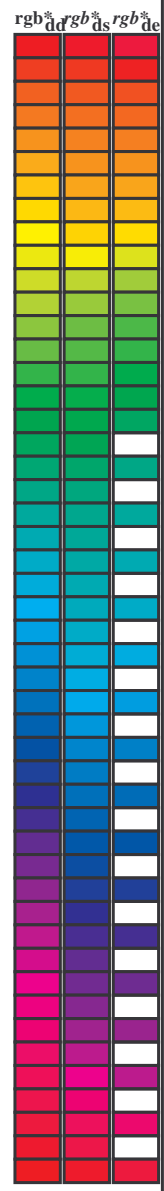
grafico TUB-RI37; codice di tinte: H*d=B50R_d
cerchio delle tinte a 48 passi; r_{gb}-LabCh*tavole

immettere: r_{gb}/cmyk -> r_{gb}^{dd}
uscita: 3D-linearizzazione a cmy0*_{dd}



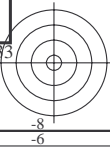
Data of Maximum color M in colorimetric system Offset standard print; separation cmy0*, D65 for input or output; Six hue angles of the 60 degree standard colours RYGBM_s: h_{ab,ds} = 30.0, 90.0, 150.0, 210.0, 270.0, 330.0;
Six hue angles of the device colours RYGBM_d: h_{ab,d} = 32.3, 96.1, 155.5, 238.4, 306.2, 359.8; Six hue angles of the elementary colours RYGBM_c: h_{ab,c} = 25.5, 92.3, 162.2, 217.0, 271.7, 328.6

h _{ab,d}	h _{ab,s}	h _{ab,e}	rgb* dd64M	LAB* ddx64M (x=LabCh)	rgb* dex361M	LAB* dex361M
32.3	30.0	25.4	1.0 0.0 0.0	45.4 70.9 44.8 83.9 32.3	1.0 0.0 0.255	45.7 72.2 34.4 80.0 25
38.1	37.5	33.8	1.0 0.125 0.0	48.9 62.8 49.4 79.9 38.1	1.0 0.021 0.0	46.0 69.6 45.7 83.3 33
46.8	45.0	42.1	1.0 0.25 0.0	53.6 51.9 55.5 76.0 46.8	1.0 0.183 0.0	51.1 57.9 52.5 78.1 42
56.9	52.5	50.5	1.0 0.375 0.0	59.1 40.3 62.0 74.0 56.9	1.0 0.288 0.0	55.4 48.5 57.8 75.4 49
67.1	60.0	58.8	1.0 0.5 0.0	64.9 28.9 68.6 74.5 67.1	1.0 0.398 0.0	60.3 38.3 63.5 74.1 58
78.6	67.5	67.2	1.0 0.625 0.0	72.1 15.4 77.1 78.6 78.6	1.0 0.494 0.0	64.6 29.5 68.4 74.5 66
86.2	75.0	75.6	1.0 0.75 0.0	77.9 5.4 83.8 84.0 86.2	1.0 0.592 0.0	70.2 19.3 75.2 77.6 75
92.1	82.5	83.9	1.0 0.875 0.0	83.4 -3.4 90.2 90.2 92.1	1.0 0.703 0.0	75.8 9.4 81.5 82.0 83
96.1	90.0	92.3	1.0 1.0 0.0	87.8 -10.2 95.4 96.0 96.1	1.0 0.879 0.0	83.6 -3.6 90.4 90.5 92
98.8	97.5	101.0	0.875 1.0 0.0	84.3 -13.9 89.2 90.3 98.8	0.807 1.0 0.0	82.4 -15.8 86.2 87.7 100
101.8	105.0	109.7	0.75 1.0 0.0	80.7 -17.5 83.5 85.3 101.8	0.583 1.0 0.0	73.7 -26.1 72.7 77.3 109
107.6	112.5	118.5	0.625 1.0 0.0	75.3 -24.0 75.7 79.4 107.6	0.434 1.0 0.0	68.0 -32.9 62.2 70.5 117
114.0	120.0	127.2	0.5 1.0 0.0	70.6 -29.7 66.5 72.8 114.0	0.322 1.0 0.0	62.6 -40.8 53.8 67.6 127
121.4	127.5	136.0	0.375 1.0 0.0	65.7 -35.6 58.3 68.3 121.4	0.249 1.0 0.0	58.4 -47.4 46.8 66.6 135
135.3	135.0	144.7	0.25 1.0 0.0	58.4 -47.3 46.8 66.6 135.3	0.122 1.0 0.0	54.6 -54.2 38.4 66.5 144
144.4	142.5	153.4	0.125 1.0 0.0	54.7 -53.9 38.5 66.3 144.4	0.03 1.0 0.0	51.2 -62.4 32.0 70.2 152
155.5	150.0	162.2	0.0 1.0 0.0	50.0 -65.0 29.6 71.4 155.5	0.0 1.0 0.151	50.7 -62.0 19.9 65.2 162
160.7	157.5	169.0	0.0 1.0 0.125	50.5 -62.8 21.9 66.5 160.7	0.0 1.0 0.261	51.3 -58.5 11.8 59.8 168
167.7	165.0	175.9	0.0 1.0 0.25	51.2 -58.9 12.7 60.3 167.7	0.0 1.0 0.364	52.0 -55.0 3.9 55.2 175
176.7	172.5	182.7	0.0 1.0 0.375	52.0 -54.5 3.1 54.6 176.7	0.0 1.0 0.43	52.5 -52.2 0.0 52.3 182
189.3	180.0	189.6	0.0 1.0 0.5	52.9 -48.6 -8.0 49.3 189.3	0.0 1.0 0.502	53.0 -48.5 -8.1 49.3 189
203.2	187.5	196.4	0.0 1.0 0.625	54.0 -42.3 -18.1 46.1 203.2	0.0 1.0 0.56	53.5 -45.9 -13.1 47.8 195
217.2	195.0	203.2	0.0 1.0 0.75	55.0 -36.0 -27.4 45.3 217.2	0.0 1.0 0.626	54.1 -42.3 -18.1 46.1 203
228.3	202.5	210.1	0.0 1.0 0.875	55.8 -30.7 -34.5 46.2 228.3	0.0 1.0 0.682	54.5 -39.6 -22.6 45.7 209
238.4	210.0	216.9	0.0 1.0 1.0	56.8 -25.5 -41.5 48.7 238.4	0.0 1.0 0.747	55.0 -36.1 -27.2 45.3 216
242.9	217.5	223.8	0.0 0.875 1.0	54.1 -21.1 -41.3 46.4 242.9	0.0 1.0 0.819	55.5 -33.2 -31.3 45.8 223
249.3	225.0	230.6	0.0 0.75 1.0	50.4 -15.5 -41.1 43.9 249.3	0.0 1.0 0.904	56.1 -29.6 -36.1 46.8 230
256.9	232.5	237.5	0.0 0.625 1.0	46.5 -9.4 -40.8 41.9 256.9	0.0 1.0 0.983	56.7 -26.2 -40.5 48.4 237
268.2	240.0	244.3	0.0 0.5 1.0	41.7 -1.2 -40.6 40.6 268.2	0.0 0.847 1.0	53.3 -19.8 -41.3 45.9 244
278.6	247.5	251.2	0.0 0.375 1.0	37.3 6.1 -40.2 40.7 278.6	0.0 0.726 1.0	49.7 -14.3 -41.1 43.6 250
289.6	255.0	258.0	0.0 0.25 1.0	32.8 14.3 -40.2 42.7 289.6	0.0 0.613 1.0	46.1 -8.6 -40.8 41.9 258
299.0	262.5	264.8	0.0 0.125 1.0	28.6 22.4 -40.2 46.1 299.0	0.0 0.542 1.0	43.4 -3.9 -40.8 41.1 264
306.2	270.0	271.7	0.0 0.0 1.0	25.0 29.5 -40.4 50.0 306.2	0.0 0.458 1.0	40.3 1.2 -40.6 40.7 271
314.7	277.5	278.8	0.125 0.0 1.0	27.9 36.0 -36.4 51.2 314.7	0.0 0.378 1.0	37.5 5.9 -40.2 40.7 278
322.1	285.0	285.9	0.25 0.0 1.0	28.8 41.9 -32.5 53.1 322.1	0.0 0.292 1.0	34.4 11.6 -40.3 42.0 285
333.3	292.5	293.0	0.375 0.0 1.0	32.7 51.8 -26.0 58.0 333.3	0.0 0.211 1.0	31.5 16.8 -40.3 43.8 292
340.5	300.0	300.1	0.5 0.0 1.0	35.6 58.6 -20.7 62.1 340.5	0.0 0.106 1.0	28.1 23.5 -40.3 46.7 300
347.9	307.5	307.2	0.625 0.0 1.0	38.1 65.4 -14.0 66.9 347.9	0.0 0.009 0.0	25.3 30.1 -40.1 50.2 306
352.5	315.0	314.3	0.75 0.0 1.0	41.8 71.0 -9.2 71.6 352.5	0.0 0.12 0.0	27.8 35.8 -36.5 51.2 314
356.1	322.5	321.4	0.875 0.0 1.0	44.2 75.2 -5.0 75.3 356.1	0.0 0.231 0.0	28.7 41.1 -33.2 52.9 321
359.8	330.0	328.6	1.0 0.0 1.0	46.1 79.3 -0.2 79.3 359.8	0.0 0.322 0.0	31.1 47.8 -29.1 56.0 328
363.0	337.5	335.7	1.0 0.0 0.875	45.9 78.2 4.1 78.3 363.0	0.0 0.408 0.0	33.5 53.7 -24.7 59.1 335
366.4	345.0	342.8	1.0 0.0 0.75	45.9 77.1 8.6 77.6 366.4	0.0 0.539 0.0	36.4 60.8 -18.7 63.7 342
371.1	352.5	349.9	1.0 0.0 0.625	46.0 75.6 14.8 77.0 371.1	0.0 0.667 0.0	39.3 67.4 -12.4 68.5 349
375.9	360.0	357.0	1.0 0.0 0.5	45.9 74.2 21.1 77.1 375.9	0.0 0.736 0.0	41.4 70.5 -9.7 71.1 352
381.2	367.5	364.1	1.0 0.0 0.375	45.8 72.9 28.3 78.3 381.2	0.0 0.81 0.0	46.1 79.3 -0.1 79.3 359
385.6	375.0	371.2	1.0 0.0 0.25	45.6 72.1 34.6 80.0 385.6	0.0 0.87 0.0	46.0 76.5 11.8 77.4 368
389.3	382.5	378.3	1.0 0.0 0.125	45.5 71.4 40.1 81.9 389.3	0.0 0.92 0.0	45.9 74.1 22.0 77.3 376
392.3	390.0	385.4	1.0 0.0 0.0	45.4 70.9 44.8 83.9 392.3	1.0 0.0 0.255	45.7 72.2 34.4 80.0 385



vedere dei file simili: <http://130.149.60.45/~farbmetrik/RI37/RI37.HTM>
informazioni tecniche: <http://www.ps.bam.de> o <http://130.149.60.45/~farbmetrik>

TUB iscrizione: 20130201-RI37/RI37L0FP.PDF /.PS
la domanda per la misura uscita nella stampa di offset, separazione cmy0* (CMY0)
TUB materiale: code=rhata



Data of Maximum color M in colorimetric system Offset standard print; separation cmy0*, D65 for input or output; Six hue angles of the 60 degree standard colours RYGBM_s: h_{ab,ds} = 30.0, 90.0, 150.0, 210.0, 270.0, 330.0;
Six hue angles of the device colours RYGBM_d: h_{ab,d} = 32.3, 96.1, 155.5, 238.4, 306.2, 359.8; Six hue angles of the elementary colours RYGBM_e: h_{ab,e} = 25.5, 92.3, 162.2, 217.0, 271.7, 328.6

h _{ab,d}	h _{ab,s}	h _{ab,e}	rgb* dd361M	LAB* ddx361Mi (x=LabCh)	R _d	rgb* ds361Mi	LAB* dsx361Mi (x=LabCh)	R _s	rgb* dd361Mi	LAB* de361Mi	R _e	rgb* dd361Mi	rgb* dd	rgb* ds	rgb* de
32	30	25	1.0 0.0 0.0	45.4 70.9 44.8 83.9 32	1.0	1.0 0.0 0.096 45.5 71.4 41.2 82.4 30	1.0	1.0 0.0 0.0	1.0 0.0 0.255 45.7 72.2 34.4 80.0 25	1.0	1.0 0.0 0.0				
33	31	26	1.0 0.016 0.0	45.9 69.8 45.5 83.4 33	1.0	1.0 0.0 0.055 45.5 71.2 42.8 83.1 31	1.0	1.0 0.017 0.0	1.0 0.0 0.218 45.6 72.0 36.1 80.6 26	1.0	1.0 0.017 0.0				
33	32	27	1.0 0.033 0.0	46.3 68.8 46.1 82.8 33	1.0	1.0 0.0 0.013 45.5 71.0 44.4 83.7 32	1.0	1.0 0.033 0.0	1.0 0.0 0.18 45.6 71.8 37.7 81.1 27	1.0	1.0 0.033 0.0				
34	33	28	1.0 0.05 0.0	46.8 67.7 46.8 82.3 34	1.0	1.0 0.015 0.0 45.9 70.0 45.5 83.5 33	1.0	1.0 0.05 0.0	1.0 0.0 0.142 45.6 71.6 39.4 81.7 28	1.0	1.0 0.05 0.0				
35	34	29	1.0 0.066 0.0	47.3 66.6 47.4 81.8 35	1.0	1.0 0.036 0.0 46.5 68.6 46.3 82.8 34	1.0	1.0 0.067 0.0	1.0 0.0 0.099 45.5 71.4 41.1 82.4 29	1.0	1.0 0.067 0.0				
36	35	31	1.0 0.083 0.0	47.7 65.5 48.0 81.2 36	1.0	1.0 0.057 0.0 47.1 67.3 47.1 82.1 35	1.0	1.0 0.083 0.0	1.0 0.0 0.053 45.5 71.2 42.9 83.1 31	1.0	1.0 0.083 0.0				
36	36	32	1.0 0.1 0.0	48.2 64.4 48.5 80.7 36	1.0	1.0 0.079 0.0 47.6 65.9 47.9 81.4 36	1.0	1.0 0.1 0.0	1.0 0.0 0.006 45.5 71.0 44.6 83.8 32	1.0	1.0 0.1 0.0				
37	37	33	1.0 0.116 0.0	48.6 63.3 49.1 80.2 37	1.0	1.0 0.1 0.0 48.2 64.5 48.6 80.7 37	1.0	1.0 0.117 0.0	1.0 0.021 0.0 46.0 69.6 45.7 83.3 33	1.0	1.0 0.117 0.0				
38	38	34	1.0 0.133 0.0	49.2 62.1 49.8 79.6 38	1.0	1.0 0.121 0.0 48.8 63.1 49.3 80.1 38	1.0	1.0 0.133 0.0	1.0 0.044 0.0 46.7 68.1 46.6 82.5 34	1.0	1.0 0.133 0.0				
39	39	35	1.0 0.15 0.0	49.8 60.7 50.7 79.1 39	1.0	1.0 0.137 0.0 49.4 61.8 50.1 79.6 39	1.0	1.0 0.15 0.0	1.0 0.068 0.0 47.4 66.6 47.5 81.8 35	1.0	1.0 0.15 0.0				
41	40	36	1.0 0.166 0.0	50.5 59.2 51.6 78.6 41	1.0	1.0 0.151 0.0 49.9 60.6 50.9 79.1 40	1.0	1.0 0.167 0.0	1.0 0.092 0.0 48.0 65.0 48.3 81.0 36	1.0	1.0 0.167 0.0				
42	41	37	1.0 0.183 0.0	51.1 57.8 52.5 78.1 42	1.0	1.0 0.166 0.0 50.5 59.4 51.6 78.7 41	1.0	1.0 0.183 0.0	1.0 0.116 0.0 48.7 63.5 49.1 80.2 37	1.0	1.0 0.183 0.0				
43	42	38	1.0 0.2 0.0	51.7 56.3 53.3 77.5 43	1.0	1.0 0.18 0.0 51.0 58.1 52.3 78.2 42	1.0	1.0 0.2 0.0	1.0 0.135 0.0 49.3 62.0 49.9 79.6 38	1.0	1.0 0.2 0.0				
44	43	39	1.0 0.216 0.0	52.4 54.9 54.0 77.0 44	1.0	1.0 0.194 0.0 51.6 56.9 53.0 77.8 43	1.0	1.0 0.217 0.0	1.0 0.151 0.0 49.9 60.7 50.8 79.1 39	1.0	1.0 0.217 0.0				
45	44	41	1.0 0.233 0.0	53.0 53.4 54.8 76.5 45	1.0	1.0 0.209 0.0 52.1 55.6 53.7 77.3 44	1.0	1.0 0.233 0.0	1.0 0.167 0.0 50.5 59.3 51.7 78.6 41	1.0	1.0 0.233 0.0				
46	45	42	1.0 0.25 0.0	53.6 51.9 55.5 76.0 46	1.0	1.0 0.223 0.0 52.7 54.4 54.4 76.9 45	1.0	1.0 0.25 0.0	1.0 0.183 0.0 51.1 57.9 52.5 78.1 42	1.0	1.0 0.25 0.0				
48	46	43	1.0 0.266 0.0	54.4 50.4 56.5 75.7 48	1.0	1.0 0.237 0.0 53.2 53.1 55.0 76.4 46	1.0	1.0 0.267 0.0	1.0 0.198 0.0 51.7 56.5 53.2 77.6 43	1.0	1.0 0.267 0.0				
49	47	44	1.0 0.283 0.0	55.1 48.9 57.4 75.4 49	1.0	1.0 0.251 0.0 53.7 51.8 55.6 76.0 47	1.0	1.0 0.283 0.0	1.0 0.214 0.0 52.3 55.1 54.0 77.1 44	1.0	1.0 0.283 0.0				
50	48	45	1.0 0.3 0.0	55.8 47.4 58.4 75.2 50	1.0	1.0 0.264 0.0 54.3 50.7 56.3 75.8 48	1.0	1.0 0.3 0.0	1.0 0.23 0.0 52.9 53.7 54.7 76.6 45	1.0	1.0 0.3 0.0				
52	49	46	1.0 0.316 0.0	56.6 45.8 59.2 74.9 52	1.0	1.0 0.276 0.0 54.8 49.6 57.1 75.6 49	1.0	1.0 0.317 0.0	1.0 0.246 0.0 53.5 52.3 55.4 76.1 46	1.0	1.0 0.317 0.0				
53	50	47	1.0 0.333 0.0	57.3 44.2 60.1 74.6 53	1.0	1.0 0.288 0.0 55.4 48.5 57.8 75.4 50	1.0	1.0 0.333 0.0	1.0 0.261 0.0 54.2 51.0 56.2 75.9 47	1.0	1.0 0.333 0.0				
54	51	48	1.0 0.35 0.0	58.0 42.7 60.9 74.4 54	1.0	1.0 0.301 0.0 55.9 47.3 58.5 75.2 51	1.0	1.0 0.35 0.0	1.0 0.274 0.0 54.8 49.8 57.0 75.6 48	1.0	1.0 0.35 0.0				
56	52	49	1.0 0.366 0.0	58.8 41.1 61.7 74.1 56	1.0	1.0 0.313 0.0 56.5 46.2 59.1 75.0 52	1.0	1.0 0.367 0.0	1.0 0.288 0.0 55.4 48.5 57.8 75.4 49	1.0	1.0 0.367 0.0				
57	53	51	1.0 0.383 0.0	59.5 39.5 62.5 74.0 57	1.0	1.0 0.326 0.0 57.0 45.0 59.8 74.8 53	1.0	1.0 0.383 0.0	1.0 0.302 0.0 56.0 47.2 58.5 75.2 51	1.0	1.0 0.383 0.0				
59	54	52	1.0 0.4 0.0	60.3 38.1 63.5 74.1 59	1.0	1.0 0.338 0.0 57.6 43.9 60.4 74.6 54	1.0	1.0 0.4 0.0	1.0 0.316 0.0 56.6 45.9 59.3 75.0 52	1.0	1.0 0.4 0.0				
60	55	53	1.0 0.416 0.0	61.0 36.6 64.5 74.1 60	1.0	1.0 0.35 0.0 58.1 42.7 61.0 74.4 55	1.0	1.0 0.417 0.0	1.0 0.33 0.0 57.2 44.6 60.0 74.8 53	1.0	1.0 0.417 0.0				
61	56	54	1.0 0.433 0.0	61.8 35.1 65.4 74.2 61	1.0	1.0 0.363 0.0 58.6 41.5 61.5 74.2 56	1.0	1.0 0.433 0.0	1.0 0.343 0.0 57.8 43.3 60.6 74.5 54	1.0	1.0 0.433 0.0				
63	57	55	1.0 0.45 0.0	62.6 33.6 66.2 74.3 63	1.0	1.0 0.375 0.0 59.2 40.3 62.1 74.0 57	1.0	1.0 0.45 0.0	1.0 0.357 0.0 58.4 42.0 61.3 74.3 55	1.0	1.0 0.45 0.0				
64	58	56	1.0 0.466 0.0	63.3 32.0 67.1 74.4 64	1.0	1.0 0.387 0.0 59.8 39.3 62.8 74.1 58	1.0	1.0 0.467 0.0	1.0 0.371 0.0 59.0 40.7 61.9 74.1 56	1.0	1.0 0.467 0.0				
65	59	57	1.0 0.483 0.0	64.1 30.5 67.9 74.4 65	1.0	1.0 0.4 0.0 60.3 38.2 63.5 74.1 59	1.0	1.0 0.483 0.0	1.0 0.385 0.0 59.6 39.5 62.7 74.1 57	1.0	1.0 0.483 0.0				
67	60	58	1.0 0.5 0.0	64.9 28.9 68.6 74.5 67	1.0	1.0 0.412 0.0 60.9 37.1 64.2 74.2 60	1.0	1.0 0.5 0.0	1.0 0.398 0.0 60.3 38.3 63.5 74.1 58	1.0	1.0 0.5 0.0				
68	61	60	1.0 0.516 0.0	65.8 27.2 69.9 75.0 68	1.0	1.0 0.424 0.0 61.4 36.0 64.9 74.2 61	1.0	1.0 0.517 0.0	1.0 0.412 0.0 60.9 37.1 64.2 74.2 60	1.0	1.0 0.517 0.0				
70	62	61	1.0 0.533 0.0	66.8 25.5 71.1 75.6 70	1.0	1.0 0.436 0.0 62.0 34.9 65.6 74.3 62	1.0	1.0 0.533 0.0	1.0 0.426 0.0 61.5 35.8 65.0 74.2 61	1.0	1.0 0.533 0.0				
71	63	62	1.0 0.55 0.0	67.7 23.8 72.3 76.1 71	1.0	1.0 0.449 0.0 62.6 33.7 66.2 74.3 63	1.0	1.0 0.55 0.0	1.0 0.439 0.0 62.1 34.6 65.7 74.3 62	1.0	1.0 0.55 0.0				
73	64	63	1.0 0.566 0.0	68.7 22.0 73.5 76.7 73	1.0	1.0 0.461 0.0 63.1 32.6 66.9 74.4 64	1.0	1.0 0.567 0.0	1.0 0.453 0.0 62.8 33.3 66.4 74.3 63	1.0	1.0 0.567 0.0				
74	65	64	1.0 0.583 0.0	69.7 20.2 74.6 77.3 74	1.0	1.0 0.473 0.0 63.7 31.5 67.5 74.4 65	1.0	1.0 0.583 0.0	1.0 0.467 0.0 63.4 32.1 67.1 74.4 64	1.0	1.0 0.583 0.0				
76	66	65	1.0 0.6 0.0	70.6 18.3 75.6 77.8 76	1.0	1.0 0.486 0.0 64.2 30.3 68.0 74.5 66	1.0	1.0 0.6 0.0	1.0 0.48 0.0 64.0 30.8 67.8 74.5 65	1.0	1.0 0.6 0.0				
77	67	66	1.0 0.616 0.0	71.6 16.4 76.6 78.4 77	1.0	1.0 0.498 0.0 64.8 29.1 68.6 74.5 67	1.0	1.0 0.617 0.0	1.0 0.494 0.0 64.6 29.5 68.4 74.5 66	1.0	1.0 0.617 0.0				
79	68	67	1.0 0.633 0.0	72.5 14.8 77.6 79.0 79	1.0	1.0 0.509 0.0 65.4 28.0 69.4 74.8 68	1.0	1.0 0.633 0.0	1.0 0.507 0.0 65.3 28.2 69.2 74.8 67	1.0	1.0 0.633 0.0				
80	69	68	1.0 0.65 0.0	73.2 13.6 78.5 79.7 80	1.0	1.0 0.52 0.0 66.1 26.9 70.2 75.2 69	1.0	1.0 0.65 0.0	1.0 0.519 0.0 66.0 27.0 70.1 75.2 68	1.0	1.0 0.65 0.0				
81	70	70	1.0 0.666 0.0	74.0 12.3 79.5 80.4 81	1.0	1.0 0.531 0.0 66.7 25.8 71.0 75.6 70	1.0	1.0 0.667 0.0	1.0 0.531 0.0 66.7 25.8 71.0 75.6 70	1.0	1.0 0.667 0.0				
82	71	71	1.0 0.683 0.0	74.8 11.0 80.4 81.1 82	1.0	1.0 0.542 0.0 67.3 24.7 71.8 75.9 71	1.0	1.0 0.683 0.0	1.0 0.543 0.0 67.4 24.6 71.9 76.0 71	1.0	1.0 0.683 0.0				
83	72	72	1.0 0.7 0.0	75.6 9.6 81.3 81.9 83	1.0	1.0 0.553 0.0 67.9 23.6 72.6 76.3 72	1.0	1.0 0.7 0.0	1.0 0.555 0.0 68.1 23.3 72.8 76.4 72	1.0	1.0 0.7 0.0				
84	73	73	1.0 0.716 0.0	76.3 8.3 82.2 82.6 84	1.0	1.0 0.564 0.0 68.6 22.4 73.3 76.6 73	1.0	1.0 0.717 0.0	1.0 0.568 0.0 68.8 22.0 73.6 76.8 73	1.0	1.0 0.717 0.0				
85	74	74	1.0 0.733 0.0	77.1 6.9 83.0 83.3 85	1.0	1.0 0.574 0.0 69.2 21.2 74.0 77.0 74	1.0	1.0 0.733 0.0	1.0 0.58 0.0 69.5 20.6 74.4 77.2 74	1.0	1.0 0.733 0.0				
86	75	75	1.0 0.75 0.0	77.9 5.4 83.8 84.0 86	1.0	1.0 0.585 0.0 69.8 20.0 74.7 77.4 75	1.0	1.0 0.75 0.0	1.0 0.592 0.0 70.2 19.3 75.2 77.6 75	1.0	1.0 0.75 0.0				

vedere dei file simili: <http://130.149.60.45/~farbmetrik/RI37/RI37.HTM>
informazioni tecniche: <http://www.ps.bam.de> o <http://130.149.60.45/~farbmetrik>

TUB iscrizione: 20130201-RI37/RI37LOFP.PDF /.PS
La domanda per la misura uscita nella stampa di offset, separazione cmy0* (CMY0)
TUB materiale: code=rh4ta

4-103931-L0 RI370-72 LAB*ta0, YN=0%, XYZnw=3.6, 4.2, 6.1, 85.4, 89.1, 104.8. LAB*nw=24.4, 0.0, 0.0. 95.6, 0.0, 0.0

uscita: Offset standard print; separation cmy0*, D65, pagina 10/33

grafico TUB-RI37; codice di tinte: H*d=B50Rd
cerchio delle tinte a 48 passi; rgb-LabCh*tavole

immettere: rgb/cmyk -> rgbdd
uscita: 3D-linearizzazione a cmy0*dd

Data of Maximum color M in colorimetric system Offset standard print; separation cmy0*; D65 for input or output; Six hue angles of the 60 degree standard colours RYGBM_s: h_{ab,ds} = 30.0, 90.0, 150.0, 210.0, 270.0, 330.0;
Six hue angles of the device colours RYGBM_d: h_{ab,d} = 32.3, 96.1, 155.5, 238.4, 306.2, 359.8; Six hue angles of the elementary colours RYGBM_e: h_{ab,e} = 25.5, 92.3, 162.2, 217.0, 271.7, 328.6

h _{ab,d}	h _{ab,s}	h _{ab,e}	rgb* dd361M	LAB* ddx361Mi (x=LabCh)	rgb* ds361Mi	LAB* dsx361Mi (x=LabCh)	rgb* dd361Mi	LAB* dex361Mi (x=LabCh)	rgb* dd361Mi	LAB* dex361Mi (x=LabCh)	rgb* dd361Mi	LAB* dex361Mi (x=LabCh)	rgb* dd361Mi	LAB* dex361Mi (x=LabCh)
86	75	75	1.0 0.75 0.0	77.9 5.4 83.8 84.0 86	1.0 0.585 0.0	69.8 20.0 74.7 77.4 75	1.0 0.75 0.0	1.0 0.592 0.0	70.2 19.3 75.2 77.6 75	1.0 0.75 0.0	1.0 0.592 0.0	70.2 19.3 75.2 77.6 75	1.0 0.75 0.0	1.0 0.592 0.0
87	76	76	1.0 0.766 0.0	78.6 4.3 84.7 84.8 87	1.0 0.596 0.0	70.5 18.8 75.4 77.7 76	1.0 0.767 0.0	1.0 0.604 0.0	70.9 17.9 75.9 78.0 76	1.0 0.767 0.0	1.0 0.604 0.0	70.9 17.9 75.9 78.0 76	1.0 0.767 0.0	1.0 0.604 0.0
87	77	77	1.0 0.783 0.0	79.4 3.2 85.6 85.7 87	1.0 0.607 0.0	71.1 17.6 76.1 78.1 77	1.0 0.783 0.0	1.0 0.616 0.0	71.6 16.5 76.6 78.4 77	1.0 0.783 0.0	1.0 0.616 0.0	71.6 16.5 76.6 78.4 77	1.0 0.783 0.0	1.0 0.616 0.0
88	78	78	1.0 0.8 0.0	80.1 2.0 86.5 86.5 88	1.0 0.618 0.0	71.7 16.3 76.7 78.5 78	1.0 0.8 0.0	1.0 0.63 0.0	72.4 15.1 77.4 78.9 78	1.0 0.8 0.0	1.0 0.63 0.0	72.4 15.1 77.4 78.9 78	1.0 0.8 0.0	1.0 0.63 0.0
89	79	80	1.0 0.816 0.0	80.8 0.8 87.3 87.3 89	1.0 0.631 0.0	72.4 15.1 77.5 78.9 79	1.0 0.817 0.0	1.0 0.648 0.0	73.2 13.8 78.5 79.7 80	1.0 0.817 0.0	1.0 0.648 0.0	73.2 13.8 78.5 79.7 80	1.0 0.817 0.0	1.0 0.648 0.0
90	80	81	1.0 0.833 0.0	81.6 -0.3 88.2 88.2 90	1.0 0.647 0.0	73.2 13.8 78.4 79.6 80	1.0 0.833 0.0	1.0 0.667 0.0	74.1 12.3 79.5 80.5 81	1.0 0.833 0.0	1.0 0.667 0.0	74.1 12.3 79.5 80.5 81	1.0 0.833 0.0	1.0 0.667 0.0
91	81	82	1.0 0.85 0.0	82.3 -1.5 89.0 89.0 91	1.0 0.664 0.0	73.9 12.6 79.4 80.4 81	1.0 0.85 0.0	1.0 0.685 0.0	74.9 10.9 80.5 81.3 82	1.0 0.85 0.0	1.0 0.685 0.0	74.9 10.9 80.5 81.3 82	1.0 0.85 0.0	1.0 0.685 0.0
91	82	83	1.0 0.866 0.0	83.1 -2.8 89.8 89.8 91	1.0 0.68 0.0	74.7 11.3 80.3 81.1 82	1.0 0.867 0.0	1.0 0.703 0.0	75.8 9.4 81.5 82.0 83	1.0 0.867 0.0	1.0 0.703 0.0	75.8 9.4 81.5 82.0 83	1.0 0.867 0.0	1.0 0.703 0.0
92	83	84	1.0 0.883 0.0	83.7 -3.8 90.5 90.6 92	1.0 0.697 0.0	75.5 10.0 81.2 81.8 83	1.0 0.883 0.0	1.0 0.721 0.0	76.6 7.9 82.4 82.8 84	1.0 0.883 0.0	1.0 0.721 0.0	76.6 7.9 82.4 82.8 84	1.0 0.883 0.0	1.0 0.721 0.0
92	84	85	1.0 0.9 0.0	84.3 -4.7 91.3 91.4 92	1.0 0.713 0.0	76.2 8.6 82.0 82.5 84	1.0 0.9 0.0	1.0 0.74 0.0	77.5 6.4 83.4 83.6 85	1.0 0.9 0.0	1.0 0.74 0.0	77.5 6.4 83.4 83.6 85	1.0 0.9 0.0	1.0 0.74 0.0
93	85	86	1.0 0.916 0.0	84.9 -5.6 92.0 92.2 93	1.0 0.729 0.0	77.0 7.2 82.9 83.2 85	1.0 0.917 0.0	1.0 0.76 0.0	78.4 4.8 84.4 84.6 86	1.0 0.917 0.0	1.0 0.76 0.0	78.4 4.8 84.4 84.6 86	1.0 0.917 0.0	1.0 0.76 0.0
94	86	87	1.0 0.933 0.0	85.5 -6.5 92.7 92.9 94	1.0 0.746 0.0	77.7 5.9 83.7 83.9 86	1.0 0.933 0.0	1.0 0.784 0.0	79.4 3.2 85.7 85.7 87	1.0 0.933 0.0	1.0 0.784 0.0	79.4 3.2 85.7 85.7 87	1.0 0.933 0.0	1.0 0.784 0.0
94	87	88	1.0 0.95 0.0	86.0 -7.4 93.4 93.7 94	1.0 0.766 0.0	78.6 4.4 84.7 84.8 87	1.0 0.95 0.0	1.0 0.807 0.0	80.5 1.6 86.9 86.9 88	1.0 0.95 0.0	1.0 0.807 0.0	80.5 1.6 86.9 86.9 88	1.0 0.95 0.0	1.0 0.807 0.0
95	88	90	1.0 0.966 0.0	86.6 -8.3 94.1 94.5 95	1.0 0.787 0.0	79.6 3.0 85.8 85.9 88	1.0 0.967 0.0	1.0 0.831 0.0	81.5 0.0 88.1 88.1 90	1.0 0.967 0.0	1.0 0.831 0.0	81.5 0.0 88.1 88.1 90	1.0 0.967 0.0	1.0 0.831 0.0
95	89	91	1.0 0.983 0.0	87.2 -9.2 94.8 95.2 95	1.0 0.808 0.0	80.5 1.5 86.9 86.9 89	1.0 0.983 0.0	1.0 0.854 0.0	82.6 -1.8 89.2 89.3 91	1.0 0.983 0.0	1.0 0.854 0.0	82.6 -1.8 89.2 89.3 91	1.0 0.983 0.0	1.0 0.854 0.0
96	90	92	1.0 1.0 0.0	87.8 -10.2 95.4 96.0 96	1.0 0.829 0.0	81.4 0.0 88.0 88.0 90	1.0 1.0 0.0	1.0 0.879 0.0	83.6 -3.6 90.4 90.5 92	1.0 1.0 0.0	1.0 0.879 0.0	83.6 -3.6 90.4 90.5 92	1.0 1.0 0.0	1.0 0.879 0.0
96	91	93	0.983 1.0 0.0	87.3 -10.7 94.6 95.2 96	1.0 0.85 0.0	82.4 -1.5 89.0 89.0 91	0.983 1.0 0.0	1.0 0.916 0.0	84.9 -5.5 92.0 92.2 93	0.983 1.0 0.0	1.0 0.916 0.0	84.9 -5.5 92.0 92.2 93	0.983 1.0 0.0	1.0 0.916 0.0
96	92	94	0.966 1.0 0.0	86.8 -11.2 93.8 94.5 96	1.0 0.871 0.0	83.3 -3.0 90.0 90.1 92	0.967 1.0 0.0	1.0 0.953 0.0	86.2 -7.5 93.6 93.9 94	0.967 1.0 0.0	1.0 0.953 0.0	86.2 -7.5 93.6 93.9 94	0.967 1.0 0.0	1.0 0.953 0.0
97	93	95	0.95 1.0 0.0	86.4 -11.7 93.0 93.7 97	1.0 0.901 0.0	84.4 -4.7 91.4 91.5 93	0.95 1.0 0.0	1.0 0.99 0.0	87.5 -9.6 95.1 95.6 95	0.95 1.0 0.0	1.0 0.99 0.0	87.5 -9.6 95.1 95.6 95	0.95 1.0 0.0	1.0 0.99 0.0
97	94	96	0.933 1.0 0.0	85.9 -12.2 92.2 93.0 97	1.0 0.933 0.0	85.5 -6.4 92.7 93.0 94	0.933 1.0 0.0	0.961 1.0 0.0	86.7 -11.3 93.6 94.3 96	0.933 1.0 0.0	0.961 1.0 0.0	86.7 -11.3 93.6 94.3 96	0.933 1.0 0.0	0.961 1.0 0.0
97	95	98	0.916 1.0 0.0	85.5 -12.7 91.3 92.2 97	1.0 0.965 0.0	86.6 -8.1 94.1 94.4 95	0.917 1.0 0.0	0.907 1.0 0.0	85.3 -12.9 90.9 91.8 98	0.917 1.0 0.0	0.907 1.0 0.0	85.3 -12.9 90.9 91.8 98	0.917 1.0 0.0	0.907 1.0 0.0
98	96	99	0.9 1.0 0.0	85.0 -13.2 90.5 91.5 98	1.0 0.997 0.0	87.7 -9.9 95.4 95.9 96	0.9 1.0 0.0	0.856 1.0 0.0	83.8 -14.4 88.4 89.6 99	0.9 1.0 0.0	0.856 1.0 0.0	83.8 -14.4 88.4 89.6 99	0.9 1.0 0.0	0.856 1.0 0.0
98	97	100	0.883 1.0 0.0	84.5 -13.6 89.7 90.7 98	0.959 1.0 0.0	86.7 -11.4 93.5 94.2 97	0.883 1.0 0.0	0.807 1.0 0.0	82.4 -15.8 86.2 87.7 100	0.883 1.0 0.0	0.807 1.0 0.0	82.4 -15.8 86.2 87.7 100	0.883 1.0 0.0	0.807 1.0 0.0
99	98	101	0.866 1.0 0.0	84.1 -14.1 88.9 90.0 99	0.914 1.0 0.0	85.4 -12.7 91.2 92.1 98	0.867 1.0 0.0	0.759 1.0 0.0	81.0 -17.2 84.0 85.7 101	0.867 1.0 0.0	0.759 1.0 0.0	81.0 -17.2 84.0 85.7 101	0.867 1.0 0.0	0.759 1.0 0.0
99	99	102	0.85 1.0 0.0	83.6 -14.6 88.1 89.3 99	0.869 1.0 0.0	84.2 -14.0 89.0 90.1 99	0.85 1.0 0.0	0.729 1.0 0.0	79.9 -18.6 82.3 84.4 102	0.85 1.0 0.0	0.729 1.0 0.0	79.9 -18.6 82.3 84.4 102	0.85 1.0 0.0	0.729 1.0 0.0
99	100	103	0.833 1.0 0.0	83.1 -15.1 87.4 88.7 99	0.827 1.0 0.0	83.0 -15.3 87.1 88.5 100	0.833 1.0 0.0	0.704 1.0 0.0	78.8 -20.0 80.8 83.2 103	0.833 1.0 0.0	0.704 1.0 0.0	78.8 -20.0 80.8 83.2 103	0.833 1.0 0.0	0.704 1.0 0.0
100	101	105	0.816 1.0 0.0	82.6 -15.6 86.6 88.0 100	0.785 1.0 0.0	81.8 -16.5 85.2 86.8 101	0.817 1.0 0.0	0.679 1.0 0.0	77.7 -21.3 79.2 82.0 105	0.817 1.0 0.0	0.679 1.0 0.0	77.7 -21.3 79.2 82.0 105	0.817 1.0 0.0	0.679 1.0 0.0
100	102	106	0.8 1.0 0.0	82.2 -16.1 85.8 87.3 100	0.747 1.0 0.0	80.6 -17.6 83.4 85.2 102	0.8 1.0 0.0	0.654 1.0 0.0	76.6 -22.6 77.6 80.8 106	0.8 1.0 0.0	0.654 1.0 0.0	76.6 -22.6 77.6 80.8 106	0.8 1.0 0.0	0.654 1.0 0.0
101	103	107	0.783 1.0 0.0	81.7 -16.6 85.1 86.7 101	0.725 1.0 0.0	79.7 -18.8 82.0 84.2 103	0.783 1.0 0.0	0.628 1.0 0.0	75.5 -23.8 76.0 79.6 107	0.783 1.0 0.0	0.628 1.0 0.0	75.5 -23.8 76.0 79.6 107	0.783 1.0 0.0	0.628 1.0 0.0
101	104	108	0.766 1.0 0.0	81.2 -17.0 84.3 86.0 101	0.703 1.0 0.0	78.7 -20.0 80.7 83.2 104	0.767 1.0 0.0	0.605 1.0 0.0	74.6 -25.0 74.3 78.4 108	0.767 1.0 0.0	0.605 1.0 0.0	74.6 -25.0 74.3 78.4 108	0.767 1.0 0.0	0.605 1.0 0.0
101	105	109	0.75 1.0 0.0	80.7 -17.5 83.5 85.3 101	0.682 1.0 0.0	77.8 -21.2 79.4 82.2 105	0.75 1.0 0.0	0.583 1.0 0.0	73.7 -26.1 72.7 77.3 109	0.75 1.0 0.0	0.583 1.0 0.0	73.7 -26.1 72.7 77.3 109	0.75 1.0 0.0	0.583 1.0 0.0
102	106	110	0.733 1.0 0.0	80.0 -18.4 82.5 84.6 102	0.66 1.0 0.0	76.8 -22.3 78.0 81.1 106	0.733 1.0 0.0	0.56 1.0 0.0	72.9 -27.1 71.0 76.1 110	0.733 1.0 0.0	0.56 1.0 0.0	72.9 -27.1 71.0 76.1 110	0.733 1.0 0.0	0.56 1.0 0.0
103	107	112	0.716 1.0 0.0	79.3 -19.3 81.5 83.8 103	0.638 1.0 0.0	75.9 -23.3 76.6 80.1 107	0.717 1.0 0.0	0.538 1.0 0.0	72.0 -28.1 69.3 74.9 112	0.717 1.0 0.0	0.538 1.0 0.0	72.0 -28.1 69.3 74.9 112	0.717 1.0 0.0	0.538 1.0 0.0
104	108	113	0.7 1.0 0.0	78.5 -20.2 80.5 83.0 104	0.617 1.0 0.0	75.0 -24.3 75.2 79.1 108	0.7 1.0 0.0	0.515 1.0 0.0	71.2 -29.0 67.7 73.7 113	0.7 1.0 0.0	0.515 1.0 0.0	71.2 -29.0 67.7 73.7 113	0.7 1.0 0.0	0.515 1.0 0.0
104	109	114	0.683 1.0 0.0	77.8 -21.1 79.4 82.2 104	0.598 1.0 0.0	74.3 -25.3 73.8 78.1 109	0.683 1.0 0.0	0.494 1.0 0.0	70.4 -30.0 66.1 72.6 114	0.683 1.0 0.0	0.494 1.0 0.0	70.4 -30.0 66.1 72.6 114	0.683 1.0 0.0	0.494 1.0 0.0
105	110	115	0.666 1.0 0.0	77.1 -22.0 78.4 81.4 105	0.579 1.0 0.0	73.6 -26.2 72.4 77.0 110	0.667 1.0 0.0	0.474 1.0 0.0	69.6 -31.0 64.8 71.9 115	0.667 1.0 0.0	0.474 1.0 0.0	69.6 -31.0 64.8 71.9 115	0.667 1.0 0.0	0.474 1.0 0.0
106	111	116	0.65 1.0 0.0	76.4 -22.8 77.3 80.6 106	0.559 1.0 0.0	72.9 -27.1 71.0 76.0 111	0.65 1.0 0.0	0.454 1.0 0.0	68.8 -32.0 63.5 71.2 116	0.65 1.0 0.0	0.454 1.0 0.0	68.8 -32.0 63.5 71.2 116	0.65 1.0 0.0	0.454 1.0 0.0
107	112	117	0.633 1.0 0.0	75.6 -23.6 76.2 79.8 107	0.54 1.0 0.0	72.1 -28.0 69.5 75.0 112	0.633 1.0 0.0	0.434 1.0 0.0	68.0 -32.9 62.2 70.5 117	0.633 1.0 0.0	0.434 1.0 0.0	68.0 -32.9 62.2 70.5 117	0.633 1.0 0.0	0.434 1.0 0.0
108	113	119	0.616 1.0 0.0	75.0 -24.4 75.1 79.0 108	0.521 1.0 0.0	71.4 -28.8 68.1 74.0 113	0.617 1.0 0.0	0.414 1.0 0.0	67.3 -33.8 60.9 69.7 119	0.617 1.0 0.0	0.414 1.0 0.0	67.3 -33.8 60.9 69.7 119	0.617 1.0 0.0	0.414 1.0 0.0
108	114	120	0.6 1.0 0.0	74.3 -25.3 73.9 78.1 108	0.501 1.0 0.0	70.7 -29.6 66.6 72.9 114	0.6 1.0 0.0	0.394 1.0 0.0	66.5 -34.7 59.6 69.0 120	0.6 1.0 0.0	0.394 1.0 0.0	66.5 -34.7 59.6 69.0 120	0.6 1.0 0.0	0.394 1.0 0.0
109	115	121	0.583 1.0 0.0	73.7 -26.1 72.7 77.2 109	0.484 1.0 0.0	70.0 -30.4 65.5 72.3 115	0.583 1.0 0.0	0.375 1.0 0.0	65.7 -35.5 58.3 68.3 121	0.583 1.0 0.0	0.375 1.0 0.0	65.7 -35.5 58.3 68.3 121	0.583 1.0 0.0	0.375 1.0 0.0
110	116	122	0.566 1.0 0.0	73.1 -26.9 71.4 76.3 110	0.467 1.0 0.0	69.3 -31.3 64.4 71.7 116	0.567 1.0 0.0	0.364 1.0 0.0	65.1 -36.6 57.4 68.2 122	0.567 1.0 0.0	0.364 1.0 0.0	65.1 -36.6 57.4 68.2 122	0.567 1.0 0.0	0.364 1.0 0.0

Data of Maximum color M in colorimetric system Offset standard print; separation cmy0*, D65 for input or output; Six hue angles of the 60 degree standard colours RYGBM_s: h_{ab,ds} = 30.0, 90.0, 150.0, 210.0, 270.0, 330.0;
Six hue angles of the device colours RYGBM_d: h_{ab,d} = 32.3, 96.1, 155.5, 238.4, 306.2, 359.8; Six hue angles of the elementary colours RYGBM_e: h_{ab,e} = 25.5, 92.3, 162.2, 217.0, 271.7, 328.6

h _{ab,d}	h _{ab,s}	h _{ab,e}	rgb* dd361M	LAB* dsx361Mi (x=LabCh)	rgb* ds361Mi	LAB* dsx361Mi (x=LabCh)	rgb* dd361Mi	LAB* dex361Mi (x=LabCh)	rgb* dd361Mi	LAB* dex361Mi (x=LabCh)	rgb* dd361Mi	LAB* dex361Mi (x=LabCh)	rgb* dd361Mi	LAB* dex361Mi (x=LabCh)	rgb* dd361Mi	LAB* dex361Mi (x=LabCh)	rgb* dd361Mi	LAB* dex361Mi (x=LabCh)											
114	120	127	0.5	1.0	0.0	70.6	-29.7	66.5	72.8	114	0.399	1.0	0.0	66.7	-34.5	59.9	69.2	120	0.5	1.0	0.0	62.6	-40.8	53.8	67.6	127	0.5	1.0	0.0
115	121	128	0.483	1.0	0.0	69.9	-30.5	65.4	72.2	115	0.382	1.0	0.0	66.0	-35.2	58.8	68.6	121	0.483	1.0	0.0	62.0	-41.8	52.9	67.5	128	0.483	1.0	0.0
116	122	129	0.466	1.0	0.0	69.3	-31.4	64.3	71.6	116	0.37	1.0	0.0	65.4	-36.1	57.9	68.3	122	0.466	1.0	0.0	61.4	-42.8	51.9	67.3	129	0.466	1.0	0.0
117	123	130	0.45	1.0	0.0	68.6	-32.2	63.2	71.0	117	0.361	1.0	0.0	64.9	-37.0	57.1	68.1	123	0.45	1.0	0.0	60.8	-43.8	50.9	67.2	130	0.45	1.0	0.0
117	124	131	0.433	1.0	0.0	68.0	-33.0	62.1	70.4	117	0.352	1.0	0.0	64.4	-37.9	56.4	68.0	124	0.433	1.0	0.0	60.2	-44.7	49.9	67.0	131	0.433	1.0	0.0
118	125	133	0.416	1.0	0.0	67.3	-33.8	61.0	69.8	118	0.343	1.0	0.0	63.8	-38.8	55.6	67.9	125	0.416	1.0	0.0	59.6	-45.6	48.9	66.9	133	0.416	1.0	0.0
119	126	134	0.4	1.0	0.0	66.7	-34.5	59.9	69.2	119	0.334	1.0	0.0	63.3	-39.7	54.8	67.8	126	0.4	1.0	0.0	59.0	-46.5	47.8	66.8	134	0.4	1.0	0.0
120	127	135	0.383	1.0	0.0	66.0	-35.2	58.8	68.6	120	0.325	1.0	0.0	62.8	-40.6	54.0	67.6	127	0.383	1.0	0.0	58.4	-47.4	46.8	66.6	135	0.383	1.0	0.0
122	128	136	0.366	1.0	0.0	65.2	-36.4	57.6	68.2	122	0.316	1.0	0.0	62.3	-41.5	53.2	67.5	128	0.366	1.0	0.0	57.9	-48.3	45.8	66.6	136	0.366	1.0	0.0
124	129	137	0.35	1.0	0.0	64.2	-38.2	56.2	67.9	124	0.307	1.0	0.0	61.7	-42.3	52.4	67.4	129	0.35	1.0	0.0	57.4	-49.2	44.7	66.6	137	0.35	1.0	0.0
126	130	138	0.333	1.0	0.0	63.2	-39.8	54.7	67.7	126	0.298	1.0	0.0	61.2	-43.1	51.5	67.3	130	0.333	1.0	0.0	57.0	-50.0	43.7	66.5	138	0.333	1.0	0.0
127	131	140	0.316	1.0	0.0	62.3	-41.4	53.2	67.5	127	0.289	1.0	0.0	60.7	-44.0	50.7	67.2	131	0.316	1.0	0.0	56.5	-50.9	42.7	66.5	140	0.316	1.0	0.0
129	132	141	0.3	1.0	0.0	61.3	-43.0	51.7	67.3	129	0.28	1.0	0.0	60.2	-44.8	49.8	67.0	132	0.3	1.0	0.0	56.0	-51.7	41.6	66.5	141	0.3	1.0	0.0
131	133	142	0.283	1.0	0.0	60.3	-44.5	50.1	67.0	131	0.271	1.0	0.0	59.6	-45.5	48.9	66.9	133	0.283	1.0	0.0	55.5	-52.5	40.5	66.4	142	0.283	1.0	0.0
133	134	143	0.266	1.0	0.0	59.3	-45.9	48.5	66.8	133	0.262	1.0	0.0	59.1	-46.3	48.0	66.8	134	0.266	1.0	0.0	55.1	-53.3	39.4	66.4	143	0.266	1.0	0.0
135	135	144	0.25	1.0	0.0	58.4	-47.3	46.8	66.6	135	0.253	1.0	0.0	58.6	-47.0	47.1	66.7	135	0.25	1.0	0.0	54.6	-54.2	38.4	66.5	144	0.25	1.0	0.0
136	136	145	0.233	1.0	0.0	57.9	-48.3	45.8	66.5	136	0.241	1.0	0.0	58.1	-47.8	46.3	66.6	136	0.233	1.0	0.0	54.1	-55.4	37.6	67.0	145	0.233	1.0	0.0
137	137	147	0.216	1.0	0.0	57.4	-49.2	44.7	66.5	137	0.227	1.0	0.0	57.7	-48.6	45.4	66.6	137	0.216	1.0	0.0	53.6	-56.6	36.7	67.6	147	0.216	1.0	0.0
138	138	148	0.2	1.0	0.0	56.9	-50.1	43.6	66.5	138	0.213	1.0	0.0	57.3	-49.4	44.5	66.6	138	0.2	1.0	0.0	53.1	-57.8	35.8	68.1	148	0.2	1.0	0.0
140	139	149	0.183	1.0	0.0	56.4	-51.0	42.5	66.4	140	0.2	1.0	0.0	56.9	-50.1	43.6	66.5	139	0.183	1.0	0.0	52.6	-59.0	34.9	68.6	149	0.183	1.0	0.0
141	140	150	0.166	1.0	0.0	55.9	-51.9	41.4	66.4	141	0.186	1.0	0.0	56.5	-50.8	42.7	66.5	140	0.166	1.0	0.0	52.1	-60.1	34.0	69.2	150	0.166	1.0	0.0
142	141	151	0.15	1.0	0.0	55.4	-52.7	40.3	66.4	142	0.172	1.0	0.0	56.1	-51.6	41.8	66.5	141	0.15	1.0	0.0	51.7	-61.3	33.0	69.7	151	0.15	1.0	0.0
143	142	152	0.133	1.0	0.0	54.9	-53.5	39.1	66.3	143	0.159	1.0	0.0	55.7	-52.3	40.9	66.4	142	0.133	1.0	0.0	51.2	-62.4	32.0	70.2	152	0.133	1.0	0.0
145	143	154	0.116	1.0	0.0	54.4	-54.7	38.0	66.6	145	0.145	1.0	0.0	55.3	-52.9	40.0	66.4	143	0.116	1.0	0.0	50.7	-63.5	30.9	70.8	154	0.116	1.0	0.0
146	144	155	0.1	1.0	0.0	53.7	-56.2	37.0	67.3	146	0.131	1.0	0.0	54.9	-53.6	39.0	66.4	144	0.1	1.0	0.0	50.2	-64.6	29.9	71.3	155	0.1	1.0	0.0
148	145	156	0.083	1.0	0.0	53.1	-57.7	35.9	68.0	148	0.119	1.0	0.0	54.5	-54.5	38.2	66.6	145	0.083	1.0	0.0	50.0	-65.7	28.8	71.8	156	0.083	1.0	0.0
149	146	157	0.066	1.0	0.0	52.5	-59.2	34.7	68.7	149	0.107	1.0	0.0	54.1	-55.5	37.5	67.1	146	0.066	1.0	0.0	50.0	-66.8	27.7	72.7	157	0.066	1.0	0.0
151	147	158	0.049	1.0	0.0	51.9	-60.7	33.5	69.4	151	0.096	1.0	0.0	53.7	-56.5	36.8	67.5	147	0.049	1.0	0.0	50.0	-67.9	26.6	73.6	158	0.049	1.0	0.0
152	148	159	0.033	1.0	0.0	51.3	-62.2	32.2	70.0	152	0.085	1.0	0.0	53.2	-57.6	36.0	68.0	148	0.033	1.0	0.0	50.0	-69.0	25.5	74.5	159	0.033	1.0	0.0
154	149	161	0.016	1.0	0.0	50.6	-63.6	30.9	70.7	154	0.074	1.0	0.0	52.8	-58.6	35.3	68.4	149	0.016	1.0	0.0	50.0	-70.1	24.4	75.4	161	0.016	1.0	0.0
155	150	162	0.0	1.0	0.0	50.0	-65.0	29.6	71.4	155	0.062	1.0	0.0	52.4	-59.6	34.5	68.9	150	0.0	1.0	0.0	50.0	-71.2	23.3	76.3	162	0.0	1.0	0.0
156	151	163	0.0	1.0	0.016	50.1	-64.7	28.5	70.7	156	0.051	1.0	0.0	52.0	-60.6	33.6	69.4	151	0.0	1.0	0.017	50.0	-72.3	22.2	77.2	163	0.0	1.0	0.017
156	152	164	0.0	1.0	0.033	50.1	-64.5	27.4	70.1	156	0.04	1.0	0.0	51.5	-61.6	32.8	69.8	152	0.0	1.0	0.033	50.0	-73.4	21.1	78.1	164	0.0	1.0	0.033
157	153	164	0.0	1.0	0.05	50.2	-64.2	26.4	69.4	157	0.028	1.0	0.0	51.1	-62.5	31.9	70.3	153	0.0	1.0	0.05	50.0	-74.5	20.0	79.0	164	0.0	1.0	0.05
158	154	165	0.0	1.0	0.066	50.3	-63.9	25.4	68.8	158	0.017	1.0	0.0	50.7	-63.5	31.0	70.7	154	0.0	1.0	0.067	50.0	-75.6	18.9	79.9	165	0.0	1.0	0.067
159	155	166	0.0	1.0	0.083	50.3	-63.6	24.4	68.1	159	0.006	1.0	0.0	50.3	-64.4	30.1	71.2	155	0.0	1.0	0.083	50.0	-76.7	17.8	80.8	166	0.0	1.0	0.083
159	156	167	0.0	1.0	0.1	50.4	-63.3	23.4	67.5	159	0.0	1.0	0.0	50.0	-65.3	29.0	71.7	156	0.0	1.0	0.1	50.0	-77.8	16.7	81.7	167	0.0	1.0	0.1
160	157	168	0.0	1.0	0.116	50.5	-62.9	22.4	66.8	160	0.0	1.0	0.0	50.0	-66.2	28.0	72.2	157	0.0	1.0	0.117	50.0	-78.9	15.6	82.6	168	0.0	1.0	0.117
161	158	169	0.0	1.0	0.133	50.5	-62.5	21.2	66.1	161	0.0	1.0	0.0	50.0	-67.1	27.0	72.7	158	0.0	1.0	0.133	50.0	-80.0	14.5	83.5	169	0.0	1.0	0.133
162	159	170	0.0	1.0	0.15	50.6	-62.1	19.9	65.2	162	0.0	1.0	0.0	50.0	-68.0	26.0	73.2	159	0.0	1.0	0.15	50.0	-81.1	13.4	84.4	170	0.0	1.0	0.15
163	160	171	0.0	1.0	0.166	50.7	-61.8	18.7	64.4	163	0.0	1.0	0.0	50.0	-68.9	25.0	73.7	160	0.0	1.0	0.167	50.0	-82.2	12.3	85.3	171	0.0	1.0	0.167
164	161	172	0.0	1.0	0.183	50.8	-61.4	17.4	63.6	164	0.0	1.0	0.0	50.0	-69.8	24.0	74.2	161	0.0	1.0	0.183	50.0	-83.3	11.2	86.2	172	0.0	1.0	0.183
164	162	173	0.0	1.0	0.2	50.9	-60.9	16.2	62.7	164	0.0	1.0	0.0	50.0	-70.7	23.0	74.7	162	0.0	1.0	0.2	50.0	-84.4	10.1	87.1	173	0.0	1.0	0.2
165	163	174	0.0	1.0	0.216	51.0	-60.1	15.0	61.9	165	0.0	1.0	0.0	50.0	-71.6	22.0	75.2	163	0.0	1.0	0.217	50.0	-85.5	9.0	88.0	174	0.0	1.0	0.217

Data of Maximum color M in colorimetric system Offset standard print; separation cmy0*; D65 for input or output; Six hue angles of the 60 degree standard colours RYGBM_s: h_{ab,ds} = 30.0, 90.0, 150.0, 210.0, 270.0, 330.0;
Six hue angles of the device colours RYGBM_d: h_{ab,d} = 32.3, 96.1, 155.5, 238.4, 306.2, 359.8; Six hue angles of the elementary colours RYGBCM: h_{ab,e} = 25.5, 92.3, 162.2, 217.0, 271.7, 328.6

h _{ab,d}	h _{ab,s}	h _{ab,e}	rgb [*] _{dd361M}	LAB [*] _{dd361Mi (x=LabCh)}	rgb [*] _{ds361Mi}	LAB [*] _{dsx361Mi (x=LabCh)}	rgb [*] _{dd361Mi}	LAB [*] _{dc361Mi}	LAB [*] _{dex361Mi (x=LabCh)}	rgb [*] _{dd361Mi}	rgb [*] _{dd}	rgb [*] _{ds}	rgb [*] _{de}
167	165	175	0.0	1.0	0.25	51.2	-58.9	12.7	60.3	167	0.0	1.0	0.25
168	166	176	0.0	1.0	0.266	51.3	-58.4	11.3	59.5	168	0.0	1.0	0.267
170	167	177	0.0	1.0	0.283	51.4	-57.9	10.0	58.8	170	0.0	1.0	0.283
171	168	178	0.0	1.0	0.3	51.5	-57.3	8.7	58.0	171	0.0	1.0	0.3
172	169	179	0.0	1.0	0.316	51.6	-56.8	7.4	57.3	172	0.0	1.0	0.317
173	170	180	0.0	1.0	0.333	51.7	-56.2	6.1	56.5	173	0.0	1.0	0.333
174	171	181	0.0	1.0	0.35	51.8	-55.5	4.9	55.8	174	0.0	1.0	0.35
176	172	182	0.0	1.0	0.366	51.9	-54.9	3.7	55.0	176	0.0	1.0	0.367
177	173	183	0.0	1.0	0.383	52.0	-54.2	2.3	54.3	177	0.0	1.0	0.383
179	174	184	0.0	1.0	0.4	52.2	-53.6	0.7	53.6	179	0.0	1.0	0.4
180	175	185	0.0	1.0	0.416	52.3	-52.8	-0.8	52.9	180	0.0	1.0	0.417
182	176	185	0.0	1.0	0.433	52.4	-52.1	-2.3	52.1	182	0.0	1.0	0.433
184	177	186	0.0	1.0	0.45	52.6	-51.3	-3.8	51.4	184	0.0	1.0	0.45
185	178	187	0.0	1.0	0.466	52.7	-50.4	-5.3	50.7	185	0.0	1.0	0.467
187	179	188	0.0	1.0	0.483	52.8	-49.6	-6.6	50.0	187	0.0	1.0	0.483
189	180	189	0.0	1.0	0.5	52.9	-48.6	-8.0	49.3	189	0.0	1.0	0.5
191	181	190	0.0	1.0	0.516	53.1	-47.9	-9.5	48.9	191	0.0	1.0	0.517
193	182	191	0.0	1.0	0.533	53.2	-47.2	-10.9	48.4	193	0.0	1.0	0.533
194	183	192	0.0	1.0	0.55	53.4	-46.4	-12.3	48.0	194	0.0	1.0	0.55
196	184	193	0.0	1.0	0.566	53.5	-45.6	-13.7	47.6	196	0.0	1.0	0.567
198	185	194	0.0	1.0	0.583	53.6	-44.7	-15.0	47.1	198	0.0	1.0	0.583
200	186	195	0.0	1.0	0.6	53.8	-43.8	-16.3	46.7	200	0.0	1.0	0.6
202	187	195	0.0	1.0	0.616	53.9	-42.8	-17.5	46.3	202	0.0	1.0	0.617
204	188	196	0.0	1.0	0.633	54.1	-42.0	-18.8	46.0	204	0.0	1.0	0.633
206	189	197	0.0	1.0	0.65	54.2	-41.2	-20.1	45.9	206	0.0	1.0	0.65
207	190	198	0.0	1.0	0.666	54.3	-40.5	-21.4	45.8	207	0.0	1.0	0.667
209	191	199	0.0	1.0	0.683	54.5	-39.7	-22.7	45.7	209	0.0	1.0	0.683
211	192	200	0.0	1.0	0.7	54.6	-38.8	-23.9	45.6	211	0.0	1.0	0.7
213	193	201	0.0	1.0	0.716	54.7	-37.9	-25.1	45.5	213	0.0	1.0	0.717
215	194	202	0.0	1.0	0.733	54.9	-37.0	-26.3	45.4	215	0.0	1.0	0.733
217	195	203	0.0	1.0	0.75	55.0	-36.0	-27.4	45.3	217	0.0	1.0	0.75
218	196	204	0.0	1.0	0.766	55.1	-35.4	-28.4	45.4	218	0.0	1.0	0.767
220	197	205	0.0	1.0	0.783	55.2	-34.7	-29.4	45.5	220	0.0	1.0	0.783
221	198	206	0.0	1.0	0.8	55.3	-34.0	-30.3	45.6	221	0.0	1.0	0.8
223	199	206	0.0	1.0	0.816	55.4	-33.3	-31.3	45.7	223	0.0	1.0	0.817
224	200	207	0.0	1.0	0.833	55.6	-32.6	-32.2	45.9	224	0.0	1.0	0.833
226	201	208	0.0	1.0	0.85	55.7	-31.8	-33.1	46.0	226	0.0	1.0	0.85
227	202	209	0.0	1.0	0.866	55.8	-31.1	-34.0	46.1	227	0.0	1.0	0.867
229	203	210	0.0	1.0	0.883	55.9	-30.4	-35.0	46.3	229	0.0	1.0	0.883
230	204	211	0.0	1.0	0.9	56.0	-29.7	-35.9	46.7	230	0.0	1.0	0.9
231	205	212	0.0	1.0	0.916	56.1	-29.1	-36.9	47.0	231	0.0	1.0	0.917
233	206	213	0.0	1.0	0.933	56.3	-28.4	-37.8	47.3	233	0.0	1.0	0.933
234	207	214	0.0	1.0	0.95	56.4	-27.7	-38.8	47.7	234	0.0	1.0	0.95
235	208	215	0.0	1.0	0.966	56.5	-27.0	-39.7	48.0	235	0.0	1.0	0.967
237	209	216	0.0	1.0	0.983	56.6	-26.2	-40.6	48.3	237	0.0	1.0	0.983
238	210	216	0.0	1.0	1.0	56.8	-25.5	-41.5	48.7	238	0.0	1.0	1.0

vedere dei file simili: <http://130.149.60.45/~farbmetrik/RI37/RI37L0FP.PDF> / .PS
informazioni tecniche: <http://www.ps.bam.de> o <http://130.149.60.45/~farbmetrik>

TUB iscrizione: 20130201-RI37/RI37L0FP.PDF / .PS
La domanda per la misura uscita nella stampa di offset, separazione cmy0* (CMY0)
TUB materiale: code=rh4ta

4-1031231-L0 RI370-72 LAB*ta0, YN=0%, XYZnw=3.6, 4.2, 6.1, 85.4, 89.1, 104.8. LAB*nw=24.4, 0.0, 0.0. 95.6, 0.0, 0.0

uscita: Offset standard print; separation cmy0*, D65, pagina 13/33

grafico TUB-RI37; codice di tinte: H*d=B50Rd
cerchio delle tinte a 48 passi; rgb-LabCh*tavole

immettere: rgb/cmyk -> rgb_{dd}
uscita: 3D-linearizzazione a cmy0*_{dd}

Data of Maximum color M in colorimetric system Offset standard print; separation cmy0*; D65 for input or output; Six hue angles of the 60 degree standard colours RYGBM_s: h_{ab,ds} = 30.0, 90.0, 150.0, 210.0, 270.0, 330.0; Six hue angles of the device colours RYGBM_d: h_{ab,d} = 32.3, 96.1, 155.5, 238.4, 306.2, 359.8; Six hue angles of the elementary colours RYGBM_c: h_{ab,e} = 25.5, 92.3, 162.2, 217.0, 271.7, 328.6

h _{ab,d}	h _{ab,s}	h _{ab,e}	rgb* dd361M	LAB* ddx361Mi (x=LabCh)	rgb* ds361Mi	LAB* dsx361Mi (x=LabCh)	rgb* dd361Mi	LAB* de361Mi	rgb* dex361Mi (x=LabCh)	rgb* dd361Mi	rgb* ds361Mi	rgb* de361Mi																													
238	210	216	0.0	1.0	1.0	56.8	-25.5	-41.5	48.7	238	C _d	0.0	1.0	0.685	54.5	-39.5	-22.8	45.7	210	C _s	0.0	1.0	1.0	1.0	0.0	1.0	0.747	55.0	-36.1	-27.2	45.3	216	C _e	0.0	1.0	1.0	1.0	0.0	1.0	0.983	1.0
239	211	217	0.0	0.983	1.0	56.4	-24.9	-41.5	48.4	239		0.0	1.0	0.694	54.6	-39.0	-23.4	45.7	211		0.0	0.983	1.0	0.0	1.0	0.757	55.1	-35.7	-27.8	45.4	217		0.0	0.983	1.0	0.0	1.0	0.967	1.0		
239	212	218	0.0	0.966	1.0	56.1	-24.3	-41.5	48.1	239		0.0	1.0	0.703	54.7	-38.6	-24.1	45.6	212		0.0	0.967	1.0	0.0	1.0	0.767	55.2	-35.3	-28.4	45.4	218		0.0	0.967	1.0	0.0	1.0	0.951	1.0		
240	213	219	0.0	0.951	1.0	55.7	-23.7	-41.5	47.8	240		0.0	1.0	0.712	54.7	-38.1	-24.7	45.6	213		0.0	0.951	1.0	0.0	1.0	0.778	55.2	-34.9	-29.0	45.5	219		0.0	0.951	1.0	0.0	1.0	0.933	1.0		
240	214	220	0.0	0.933	1.0	55.4	-23.1	-41.5	47.5	240		0.0	1.0	0.721	54.8	-37.6	-25.3	45.5	214		0.0	0.933	1.0	0.0	1.0	0.788	55.3	-34.5	-29.6	45.6	220		0.0	0.933	1.0	0.0	1.0	0.917	1.0		
241	215	221	0.0	0.917	1.0	55.0	-22.5	-41.4	47.2	241		0.0	1.0	0.731	54.9	-37.1	-26.0	45.4	215		0.0	0.917	1.0	0.0	1.0	0.798	55.4	-34.1	-30.2	45.7	221		0.0	0.917	1.0	0.0	1.0	0.808	1.0		
242	216	222	0.0	0.9	1.0	54.6	-22.0	-41.4	46.9	242		0.0	1.0	0.739	55.0	-36.6	-26.6	45.4	216		0.0	0.9	1.0	0.0	1.0	0.808	55.4	-33.6	-30.8	45.7	222		0.0	0.9	1.0	0.0	1.0	0.883	1.0		
242	217	223	0.0	0.883	1.0	54.3	-21.4	-41.4	46.6	242		0.0	1.0	0.747	55.0	-36.1	-27.2	45.3	217		0.0	0.883	1.0	0.0	1.0	0.819	55.5	-33.2	-31.3	45.8	223		0.0	0.883	1.0	0.0	1.0	0.867	1.0		
243	218	224	0.0	0.867	1.0	53.9	-20.7	-41.3	46.3	243		0.0	1.0	0.758	55.1	-35.6	-27.8	45.4	218		0.0	0.867	1.0	0.0	1.0	0.829	55.6	-32.7	-31.9	45.9	224		0.0	0.867	1.0	0.0	1.0	0.851	1.0		
244	219	225	0.0	0.851	1.0	53.4	-20.0	-41.3	45.9	244		0.0	1.0	0.769	55.2	-35.2	-28.5	45.4	219		0.0	0.851	1.0	0.0	1.0	0.839	55.6	-32.3	-32.5	45.9	225		0.0	0.851	1.0	0.0	1.0	0.833	1.0		
245	220	226	0.0	0.833	1.0	52.9	-19.2	-41.3	45.6	245		0.0	1.0	0.781	55.3	-34.8	-29.2	45.5	220		0.0	0.833	1.0	0.0	1.0	0.851	55.7	-31.8	-33.1	46.0	226		0.0	0.833	1.0	0.0	1.0	0.817	1.0		
245	221	227	0.0	0.817	1.0	52.4	-18.5	-41.3	45.3	245		0.0	1.0	0.792	55.3	-34.3	-29.8	45.6	221		0.0	0.817	1.0	0.0	1.0	0.861	55.8	-31.3	-33.6	46.1	227		0.0	0.817	1.0	0.0	1.0	0.8	1.0		
246	222	227	0.0	0.8	1.0	51.9	-17.7	-41.3	44.9	246		0.0	1.0	0.803	55.4	-33.9	-30.5	45.7	222		0.0	0.8	1.0	0.0	1.0	0.871	55.8	-30.8	-34.2	46.2	227		0.0	0.8	1.0	0.0	1.0	0.783	1.0		
247	223	228	0.0	0.783	1.0	51.4	-17.0	-41.2	44.6	247		0.0	1.0	0.815	55.5	-33.4	-31.1	45.8	223		0.0	0.783	1.0	0.0	1.0	0.881	55.9	-30.4	-34.8	46.3	228		0.0	0.783	1.0	0.0	1.0	0.767	1.0		
248	224	229	0.0	0.767	1.0	50.9	-16.2	-41.2	44.2	248		0.0	1.0	0.826	55.6	-32.9	-31.7	45.8	224		0.0	0.767	1.0	0.0	1.0	0.893	56.0	-30.0	-35.4	46.6	229		0.0	0.767	1.0	0.0	1.0	0.751	1.0		
249	225	230	0.0	0.751	1.0	50.4	-15.5	-41.1	43.9	249		0.0	1.0	0.837	55.6	-32.4	-32.4	45.9	225		0.0	0.751	1.0	0.0	1.0	0.904	56.1	-29.6	-36.1	46.8	230		0.0	0.751	1.0	0.0	1.0	0.733	1.0		
250	226	231	0.0	0.733	1.0	49.9	-14.7	-41.1	43.6	250		0.0	1.0	0.849	55.7	-31.9	-33.0	46.0	226		0.0	0.733	1.0	0.0	1.0	0.915	56.2	-29.1	-36.7	47.0	231		0.0	0.733	1.0	0.0	1.0	0.861	1.0		
251	227	232	0.0	0.717	1.0	49.4	-13.8	-41.1	43.4	251		0.0	1.0	0.861	55.8	-31.3	-33.6	46.1	227		0.0	0.717	1.0	0.0	1.0	0.926	56.3	-28.7	-37.4	47.2	232		0.0	0.717	1.0	0.0	1.0	0.683	1.0		
252	228	233	0.0	0.7	1.0	48.8	-13.0	-41.1	43.1	252		0.0	1.0	0.871	55.9	-30.8	-34.2	46.2	228		0.0	0.7	1.0	0.0	1.0	0.938	56.3	-28.2	-38.0	47.5	233		0.0	0.7	1.0	0.0	1.0	0.666	1.0		
253	229	234	0.0	0.683	1.0	48.3	-12.2	-41.1	42.9	253		0.0	1.0	0.883	55.9	-30.3	-34.9	46.4	229		0.0	0.683	1.0	0.0	1.0	0.949	56.4	-27.7	-38.6	47.7	234		0.0	0.683	1.0	0.0	1.0	0.651	1.0		
254	230	235	0.0	0.666	1.0	47.8	-11.4	-41.0	42.6	254		0.0	1.0	0.896	56.0	-29.9	-35.6	46.6	230		0.0	0.666	1.0	0.0	1.0	0.961	56.5	-27.2	-39.3	47.9	235		0.0	0.666	1.0	0.0	1.0	0.633	1.0		
255	231	236	0.0	0.651	1.0	47.3	-10.6	-41.0	42.3	255		0.0	1.0	0.908	56.1	-29.4	-36.3	46.9	231		0.0	0.651	1.0	0.0	1.0	0.972	56.6	-26.7	-39.9	48.2	236		0.0	0.651	1.0	0.0	1.0	0.617	1.0		
256	232	237	0.0	0.633	1.0	46.8	-9.8	-40.9	42.1	256		0.0	1.0	0.921	56.2	-28.9	-37.0	47.1	232		0.0	0.633	1.0	0.0	1.0	0.983	56.7	-26.2	-40.5	48.4	237		0.0	0.633	1.0	0.0	1.0	0.617	1.0		
257	233	237	0.0	0.617	1.0	46.2	-8.9	-40.9	41.8	257		0.0	1.0	0.933	56.3	-28.4	-37.7	47.4	233		0.0	0.617	1.0	0.0	1.0	0.994	56.8	-25.7	-41.1	48.6	237		0.0	0.617	1.0	0.0	1.0	0.6	1.0		
259	234	238	0.0	0.6	1.0	45.5	-7.8	-40.9	41.7	259		0.0	1.0	0.945	56.4	-27.9	-38.4	47.6	234		0.0	0.6	1.0	0.0	1.0	0.988	1.0	56.6	-25.0	-41.4	48.5	238		0.0	0.6	1.0	0.0	1.0	0.583	1.0	
260	235	239	0.0	0.583	1.0	44.9	-6.6	-41.0	41.5	260		0.0	1.0	0.957	56.5	-27.4	-39.1	47.9	235		0.0	0.583	1.0	0.0	1.0	0.962	1.0	56.0	-24.1	-41.4	48.1	239		0.0	0.583	1.0	0.0	1.0	0.567	1.0	
262	236	240	0.0	0.567	1.0	44.2	-5.5	-40.9	41.3	262		0.0	1.0	0.971	56.6	-26.8	-39.8	48.1	236		0.0	0.567	1.0	0.0	1.0	0.937	1.0	55.5	-23.2	-41.4	47.6	240		0.0	0.567	1.0	0.0	1.0	0.551	1.0	
263	237	241	0.0	0.551	1.0	43.6	-4.4	-40.9	41.1	263		0.0	1.0	0.982	56.7	-26.2	-40.5	48.4	237		0.0	0.551	1.0	0.0	1.0	0.911	1.0	54.9	-22.3	-41.4	47.1	241		0.0	0.551	1.0	0.0	1.0	0.533	1.0	
265	238	242	0.0	0.533	1.0	43.0	-3.3	-40.8	41.0	265		0.0	1.0	0.994	56.8	-25.7	-41.1	48.6	238		0.0	0.533	1.0	0.0	1.0	0.885	1.0	54.4	-21.4	-41.3	46.7	242		0.0	0.533	1.0	0.0	1.0	0.517	1.0	
266	239	243	0.0	0.517	1.0	42.3	-2.3	-40.7	40.8	266		0.0	1.0	0.985	1.0	56.5	-24.9	-41.4	48.5	239		0.0	0.517	1.0	0.0	1.0	0.864	1.0	53.9	-20.6	-41.3	46.3	243		0.0	0.517	1.0	0.0	1.0	0.5	1.0
268	240	244	0.0	0.5	1.0	41.7	-1.2	-40.6	40.6	268		0.0	1.0	0.956	1.0	55.9	-23.9	-41.4	48.0	240		0.0	0.5	1.0	0.0	1.0	0.847	1.0	53.3	-19.8	-41.3	45.9	244		0.0	0.5	1.0	0.0	1.0	0.483	1.0
269	241	245	0.0	0.483	1.0	41.1	-0.2	-40.6	40.6	269		0.0	1.0	0.928	1.0	55.3	-22.9	-41.4	47.4	241		0.0	0.483	1.0	0.0	1.0	0.829	1.0	52.8	-19.0	-41.3	45.6	245		0.0	0.483	1.0	0.0	1.0	0.467	1.0
271	242	246	0.0	0.467	1.0	40.5	0.7	-40.6	40.6	271		0.0	0.9	1.0	54.7	-21.9	-41.3	46.9	242		0.0	0.467	1.0	0.0	1.0	0.811	1.0	52.3	-18.1	-41.2	45.2	246		0.0	0.467	1.0	0.0	1.0	0.451	1.0	
272	243	247	0.0	0.451	1.0	39.9	1.7	-40.6	40.6	272		0.0	0.873	1.0	54.1	-21.0	-41.3	46.4	243		0.0	0.451	1.0	0.0	1.0	0.793	1.0	51.7	-17.3	-41.2	44.8	247		0.0	0.451	1.0	0.0	1.0	0.433	1.0	
273	244	248	0.0	0.433	1.0	39.3	2.7	-40.6	40.6	273		0.0	0.854	1.0	53.5	-20.1	-41.3	46.1																							

vedere dei file simili: http://130.149.60.45/~farbmetrik/RI37/RI37.HTM
informazioni tecniche: http://www.ps.bam.de o http://130.149.60.45/~farbmetrik

Data of Maximum color M in colorimetric system Offset standard print; separation cmy0*; D65 for input or output; Six hue angles of the 60 degree standard colours RYGBM_s; h_{ab,ds} = 30.0, 90.0, 150.0, 210.0, 270.0, 330.0;
Six hue angles of the device colours RYGBM_d; h_{ab,d} = 32.3, 96.1, 155.5, 238.4, 306.2, 359.8; Six hue angles of the elementary colours RYGBM_c: h_{ab,c} = 25.5, 92.3, 162.2, 217.0, 271.7, 328.6

h _{ab,d}	h _{ab,s}	h _{ab,c}	rgb [*] _{dd361M}	LAB [*] _{dd361Mi (x=LabCh)}	rgb [*] _{ds361Mi}	LAB [*] _{dsx361Mi (x=LabCh)}	rgb [*] _{dd361Mi}	rgb [*] _{dc361Mi}	LAB [*] _{dex361Mi (x=LabCh)}	rgb [*] _{dd361Mi}	rgb [*] _{ds361Mi}	rgb [*] _{dc361Mi}
289	255	258	0.0 0.25 1.0	32.8 14.3 -40.2 42.7 289	0.0 0.657 1.0	47.5 -10.9 -40.9 42.5 255	0.0 0.25 1.0	0.0 0.613 1.0	46.1 -8.6 -40.8 41.9 258	0.0 0.25 1.0		
290	256	258	0.0 0.233 1.0	32.2 15.3 -40.3 43.1 290	0.0 0.641 1.0	47.0 -10.1 -40.9 42.2 256	0.0 0.233 1.0	0.0 0.603 1.0	45.7 -7.9 -40.9 41.7 258	0.0 0.233 1.0		
292	257	259	0.0 0.216 1.0	31.7 16.4 -40.3 43.6 292	0.0 0.624 1.0	46.5 -9.3 -40.8 42.0 257	0.0 0.217 1.0	0.0 0.593 1.0	45.3 -7.2 -40.9 41.6 259	0.0 0.217 1.0		
293	258	260	0.0 0.2 1.0	31.1 17.5 -40.4 44.0 293	0.0 0.613 1.0	46.1 -8.6 -40.8 41.9 258	0.0 0.2 1.0	0.0 0.583 1.0	44.9 -6.6 -40.9 41.5 260	0.0 0.2 1.0		
294	259	261	0.0 0.183 1.0	30.6 18.5 -40.4 44.5 294	0.0 0.601 1.0	45.7 -7.9 -40.9 41.7 259	0.0 0.183 1.0	0.0 0.573 1.0	44.5 -5.9 -40.9 41.4 261	0.0 0.183 1.0		
295	260	262	0.0 0.166 1.0	30.0 19.6 -40.4 44.9 295	0.0 0.591 1.0	45.3 -7.1 -40.9 41.6 260	0.0 0.167 1.0	0.0 0.562 1.0	44.1 -5.2 -40.9 41.3 262	0.0 0.167 1.0		
297	261	263	0.0 0.15 1.0	29.5 20.7 -40.4 45.4 297	0.0 0.58 1.0	44.8 -6.4 -40.9 41.5 261	0.0 0.15 1.0	0.0 0.552 1.0	43.7 -4.5 -40.9 41.2 263	0.0 0.15 1.0		
298	262	264	0.0 0.133 1.0	28.9 21.8 -40.3 45.8 298	0.0 0.569 1.0	44.4 -5.7 -40.9 41.4 262	0.0 0.133 1.0	0.0 0.542 1.0	43.4 -3.9 -40.8 41.1 264	0.0 0.133 1.0		
299	263	265	0.0 0.116 1.0	28.4 22.8 -40.3 46.3 299	0.0 0.558 1.0	44.0 -4.9 -40.9 41.3 263	0.0 0.117 1.0	0.0 0.532 1.0	43.0 -3.2 -40.8 41.0 265	0.0 0.117 1.0		
300	264	266	0.0 0.1 1.0	27.9 23.8 -40.4 46.9 300	0.0 0.547 1.0	43.5 -4.2 -40.8 41.2 264	0.0 0.1 1.0	0.0 0.522 1.0	42.6 -2.6 -40.7 40.9 266	0.0 0.1 1.0		
301	265	267	0.0 0.083 1.0	27.4 24.7 -40.4 47.4 301	0.0 0.536 1.0	43.1 -3.5 -40.8 41.1 265	0.0 0.083 1.0	0.0 0.512 1.0	42.2 -1.9 -40.7 40.8 267	0.0 0.083 1.0		
302	266	268	0.0 0.066 1.0	26.9 25.7 -40.4 47.9 302	0.0 0.525 1.0	42.7 -2.8 -40.7 40.9 266	0.0 0.067 1.0	0.0 0.502 1.0	41.8 -1.3 -40.6 40.7 268	0.0 0.067 1.0		
303	267	269	0.0 0.049 1.0	26.5 26.6 -40.5 48.4 303	0.0 0.514 1.0	42.3 -2.0 -40.7 40.8 267	0.0 0.05 1.0	0.0 0.491 1.0	41.4 -0.6 -40.6 40.7 269	0.0 0.05 1.0		
304	268	269	0.0 0.033 1.0	26.0 27.6 -40.4 49.0 304	0.0 0.503 1.0	41.8 -1.3 -40.6 40.7 268	0.0 0.033 1.0	0.0 0.48 1.0	41.0 0.0 -40.6 40.7 269	0.0 0.033 1.0		
305	269	270	0.0 0.016 1.0	25.5 28.6 -40.4 49.5 305	0.0 0.491 1.0	41.4 -0.6 -40.6 40.7 269	0.0 0.017 1.0	0.0 0.469 1.0	40.6 0.6 -40.6 40.7 270	0.0 0.017 1.0		
306	270	271	0.0 0.0 1.0	25.0 29.5 -40.4 50.0 306	B_d 0.0 0.479 1.0	41.0 0.0 -40.6 40.7 270	B_s 0.0 0.0 1.0	0.0 0.458 1.0	40.3 1.2 -40.6 40.7 271	B_e 0.0 0.0 1.0		
307	271	272	0.016 0.0 1.0	25.4 30.4 -39.9 50.2 307	0.0 0.467 1.0	40.6 0.7 -40.6 40.7 271	0.017 0.0 1.0	0.0 0.447 1.0	39.9 1.9 -40.5 40.7 272	0.017 0.0 1.0		
308	272	273	0.033 0.0 1.0	25.8 31.3 -39.4 50.4 308	0.0 0.455 1.0	40.2 1.4 -40.6 40.7 272	0.033 0.0 1.0	0.0 0.435 1.0	39.5 2.6 -40.5 40.7 273	0.033 0.0 1.0		
309	273	274	0.05 0.0 1.0	26.2 32.2 -38.9 50.5 309	0.0 0.443 1.0	39.7 2.1 -40.5 40.7 273	0.05 0.0 1.0	0.0 0.424 1.0	39.1 3.3 -40.5 40.7 274	0.05 0.0 1.0		
310	274	275	0.066 0.0 1.0	26.5 33.1 -38.4 50.7 310	0.0 0.431 1.0	39.3 2.8 -40.5 40.7 274	0.067 0.0 1.0	0.0 0.413 1.0	38.7 3.9 -40.4 40.7 275	0.067 0.0 1.0		
311	275	276	0.083 0.0 1.0	26.9 33.9 -37.8 50.8 311	0.0 0.419 1.0	38.9 3.5 -40.4 40.7 275	0.083 0.0 1.0	0.0 0.401 1.0	38.3 4.6 -40.3 40.7 276	0.083 0.0 1.0		
313	276	277	0.1 0.0 1.0	27.3 34.8 -37.3 51.0 313	0.0 0.407 1.0	38.5 4.3 -40.4 40.7 276	0.1 0.0 1.0	0.0 0.39 1.0	37.9 5.3 -40.3 40.7 277	0.1 0.0 1.0		
314	277	278	0.116 0.0 1.0	27.7 35.6 -36.7 51.1 314	0.0 0.395 1.0	38.1 5.0 -40.3 40.7 277	0.117 0.0 1.0	0.0 0.378 1.0	37.5 5.9 -40.2 40.7 278	0.117 0.0 1.0		
315	278	279	0.133 0.0 1.0	27.9 36.4 -36.2 51.3 315	0.0 0.383 1.0	37.6 5.7 -40.2 40.7 278	0.133 0.0 1.0	0.0 0.367 1.0	37.1 6.6 -40.2 40.8 279	0.133 0.0 1.0		
316	279	280	0.15 0.0 1.0	28.1 37.2 -35.7 51.6 316	0.0 0.371 1.0	37.2 6.4 -40.2 40.8 279	0.15 0.0 1.0	0.0 0.357 1.0	36.7 7.3 -40.2 41.0 280	0.15 0.0 1.0		
317	280	281	0.166 0.0 1.0	28.2 38.0 -35.2 51.9 317	0.0 0.36 1.0	36.8 7.1 -40.2 41.0 280	0.167 0.0 1.0	0.0 0.346 1.0	36.3 8.0 -40.3 41.2 281	0.167 0.0 1.0		
318	281	282	0.183 0.0 1.0	28.3 38.8 -34.7 52.1 318	0.0 0.348 1.0	36.4 7.8 -40.3 41.1 281	0.183 0.0 1.0	0.0 0.335 1.0	35.9 8.7 -40.3 41.3 282	0.183 0.0 1.0		
319	282	283	0.2 0.0 1.0	28.5 39.6 -34.2 52.4 319	0.0 0.337 1.0	36.0 8.6 -40.3 41.3 282	0.2 0.0 1.0	0.0 0.324 1.0	35.5 9.4 -40.3 41.5 283	0.2 0.0 1.0		
320	283	284	0.216 0.0 1.0	28.6 40.4 -33.7 52.6 320	0.0 0.326 1.0	35.6 9.3 -40.3 41.5 283	0.217 0.0 1.0	0.0 0.313 1.0	35.1 10.1 -40.3 41.7 284	0.217 0.0 1.0		
321	284	285	0.233 0.0 1.0	28.7 41.2 -33.1 52.9 321	0.0 0.314 1.0	35.2 10.1 -40.3 41.7 284	0.233 0.0 1.0	0.0 0.303 1.0	34.8 10.8 -40.3 41.9 285	0.233 0.0 1.0		
322	285	285	0.25 0.0 1.0	28.8 41.9 -32.5 53.1 322	0.0 0.303 1.0	34.8 10.8 -40.3 41.9 285	0.25 0.0 1.0	0.0 0.292 1.0	34.4 11.6 -40.3 42.0 285	0.25 0.0 1.0		
323	286	286	0.266 0.0 1.0	29.4 43.3 -31.8 53.8 323	0.0 0.291 1.0	34.3 11.6 -40.3 42.0 286	0.267 0.0 1.0	0.0 0.281 1.0	34.0 12.3 -40.3 42.2 286	0.267 0.0 1.0		
325	287	287	0.283 0.0 1.0	29.9 44.7 -31.1 54.4 325	0.0 0.28 1.0	33.9 12.3 -40.3 42.2 287	0.283 0.0 1.0	0.0 0.27 1.0	33.6 13.0 -40.2 42.4 287	0.283 0.0 1.0		
326	288	288	0.3 0.0 1.0	30.4 46.0 -30.3 55.1 326	0.0 0.269 1.0	33.5 13.1 -40.2 42.4 288	0.3 0.0 1.0	0.0 0.26 1.0	33.2 13.7 -40.2 42.5 288	0.3 0.0 1.0		
328	289	289	0.316 0.0 1.0	30.9 47.3 -29.4 55.7 328	0.0 0.257 1.0	33.1 13.9 -40.2 42.6 289	0.317 0.0 1.0	0.0 0.249 1.0	32.8 14.4 -40.1 42.7 289	0.317 0.0 1.0		
329	290	290	0.333 0.0 1.0	31.4 48.6 -28.5 56.4 329	0.0 0.245 1.0	32.7 14.6 -40.1 42.8 290	0.333 0.0 1.0	0.0 0.236 1.0	32.4 15.2 -40.2 43.1 290	0.333 0.0 1.0		
331	291	291	0.35 0.0 1.0	32.0 49.9 -27.5 57.0 331	0.0 0.232 1.0	32.2 15.5 -40.2 43.2 291	0.35 0.0 1.0	0.0 0.223 1.0	32.0 16.0 -40.3 43.4 291	0.35 0.0 1.0		
332	292	292	0.366 0.0 1.0	32.5 51.2 -26.5 57.7 332	0.0 0.219 1.0	31.8 16.3 -40.3 43.6 292	0.367 0.0 1.0	0.0 0.211 1.0	31.5 16.8 -40.3 43.8 292	0.367 0.0 1.0		
333	293	293	0.383 0.0 1.0	32.9 52.3 -25.7 58.3 333	0.0 0.205 1.0	31.4 17.2 -40.3 43.9 293	0.383 0.0 1.0	0.0 0.198 1.0	31.1 17.6 -40.3 44.1 293	0.383 0.0 1.0		
334	294	294	0.4 0.0 1.0	33.3 53.2 -25.0 58.8 334	0.0 0.192 1.0	30.9 18.0 -40.3 44.3 294	0.4 0.0 1.0	0.0 0.186 1.0	30.7 18.4 -40.4 44.5 294	0.4 0.0 1.0		
335	295	295	0.416 0.0 1.0	33.7 54.1 -24.4 59.4 335	0.0 0.179 1.0	30.5 18.9 -40.4 44.6 295	0.417 0.0 1.0	0.0 0.173 1.0	30.3 19.2 -40.4 44.8 295	0.417 0.0 1.0		
336	296	296	0.433 0.0 1.0	34.0 55.0 -23.7 59.9 336	0.0 0.166 1.0	30.0 19.7 -40.3 45.0 296	0.433 0.0 1.0	0.0 0.161 1.0	29.9 20.1 -40.3 45.1 296	0.433 0.0 1.0		
337	297	297	0.45 0.0 1.0	34.4 55.9 -23.0 60.5 337	0.0 0.152 1.0	29.6 20.6 -40.3 45.4 297	0.45 0.0 1.0	0.0 0.148 1.0	29.4 20.9 -40.3 45.5 297	0.45 0.0 1.0		
338	298	298	0.466 0.0 1.0	34.8 56.8 -22.2 61.0 338	0.0 0.139 1.0	29.1 21.5 -40.3 45.7 298	0.467 0.0 1.0	0.0 0.136 1.0	29.0 21.7 -40.3 45.8 298	0.467 0.0 1.0		
339	299	299	0.483 0.0 1.0	35.2 57.7 -21.5 61.6 339	0.0 0.126 1.0	28.7 22.3 -40.2 46.1 299	0.483 0.0 1.0	0.0 0.122 1.0	28.6 22.6 -40.2 46.2 299	0.483 0.0 1.0		
340	300	300	0.5 0.0 1.0	35.6 58.6 -20.7 62.1 340	0.0 0.109 1.0	28.2 23.3 -40.3 46.6 300	0.5 0.0 1.0	0.0 0.106 1.0	28.1 23.5 -40.3 46.7 300	0.5 0.0 1.0		



TUB iscrizione: 20130201-RI37/RI37L0FP.PDF /.PS
La domanda per la misura uscita nella stampa di offset, separazione cmy0* (CMY0)
TUB materiale: code=rh4ta

Data of Maximum color M in colorimetric system Offset standard print; separation cmy0*, D65 for input or output; Six hue angles of the 60 degree standard colours RYGBM_S: h_{ab,ds} = 30.0, 90.0, 150.0, 210.0, 270.0, 330.0;
Six hue angles of the device colours RYGBM_d: h_{ab,d} = 32.3, 96.1, 155.5, 238.4, 306.2, 359.8; Six hue angles of the elementary colours RYGBM_e: h_{ab,e} = 25.5, 92.3, 162.2, 217.0, 271.7, 328.6

Table with columns: h_{ab,d}, h_{ab,s}, h_{ab,e}, rgb*dd361M, LAB*dd361Mi (x=LabCh), ds361Mi, rgb*ds361Mi (x=LabCh), LAB*ds361Mi, rgb*dd361Mi, de361Mi, LAB*de361Mi (x=LabCh), rgb*de361Mi, ds361Mi, rgb*ds361Mi, de361Mi, LAB*de361Mi (x=LabCh), rgb*dd361Mi, rgb*dd361Mi, rgb*ds, rgb*de

vedere dei file simili: http://130.149.60.45/~farbmetrik/RI37/RI37.HTM
informazioni tecniche: http://www.ps.bam.de o http://130.149.60.45/~farbmetrik

TUB iscrizione: 20130201-RI37/RI37L0FP.PDF /.PS
La domanda per la misura uscita nella stampa di offset, separazione cmy0* (CMY0)
TUB materiale: code=rh4ta

http://130.149.60.45/~farbmetrik/RI37/RI37LOFP.PDF /.PS; 3D-linearizzazione F: 3D-linearizzazione RI37/RI37L30FP.DAT nel file (F), pagina 18/33

Table with columns: nrf, HHC*Fid, rfp_Fid, icr_Fid, hsa_Fid, rfp*Fid, LabC*Fid, cmy0*_sep,Fid, hsa*Fid, rfp*Fid, LabC*Fid, delta. Rows include color names like R000, R001, R002, etc.

vedere dei file simili: http://130.149.60.45/~farbmetrik/RI37/RI37.HTM informazioni tecniche: http://www.ps.bam.de o http://130.149.60.45/~farbmetrik

immettere: rgb/cmyk -> rgbd uscita: 3D-linearizzazione a cmy0*dd

grafico TUB-RI37; codice di tinte: H*_d=B50Rd colori e la differenza, ΔE*_a

http://130.149.60.45/~farbmetrik/RI37/RI37LOFP.PDF /.PS; 3D-linearizzazione F: 3D-linearizzazione RI37/RI37LI30FP.DAT nel file (F), pagina 20/33

Table with 80 columns (n=1 to n=80) and 10 rows of colorimetric data including Lab, Luv, and XYZ values for various color patches.

grafico TUB-RI37; codice di tinte: H*d=B50Rd colori e la differenza, ΔE*

immettere: rgb/cmyk -> rgbd uscita: 3D-linearizzazione a cmy0* dd

http://130.149.60.45/~farbmetrik/RI37/RI37LOFP.PDF /.PS; 3D-linearizzazione F: 3D-linearizzazione RI37/RI37L30FP.DAT nel file (F), pagina 21/33

Table with 16 columns: n, HHC*Fid, rpb_Fid, icr_Fid, hsa_Fid, rpb*Fid, LabC0*Fid, cmy0*_sep,Fid, rpb**Fid, LabC**Fid, hsa**Fid, rpb**Fid, LabC**Fid, delta, and 16 numerical columns. Rows list various color patches from 81 to 161.

immettere: rgb/cmyk -> rgbd uscita: 3D-linearizzazione a cmy0*dd

grafico TUB-RI37; codice di tinte: H*d=B50Rd colori e la differenza, ΔE*

RI370-7N, 21/33-F

4-1032031-F0

Table with 15 columns: n, HHC*Fid, rpb_Fid, icr_Fid, Hs_Fid, rpb*Fid, LabC*Fid, LabC*Fid, cmy0*sep.Fid, Lab, Hs, rpb, Lab, LabC, delta. Rows include color names like R00Y, R00M, B00R, etc.

immettere: rgb/cmyk -> rgbd uscita: 3D-linearizzazione a cmy0*dd

grafico TUB-RI37; codice di tinte: H*d=B50Rd colori e la differenza, ΔE*

RI370-7N, 24/33-F

4-103231-F0

4-1032331-F0

http://130.149.60.45/~farbmetrik/RI37/RI37LOFP.PDF /.PS; 3D-linearizzazione

F: 3D-linearizzazione RI37/RI37L30FP.DAT nel file (F), pagina 25/33

Table with columns: n, HHC*Fid, rpb_Fid, icr_Fid, Hsa_Fid, rpb*Fid, LabCM*Fid, cmy0*_sep,Fid, Lab*Fid, Hsa*Fid, rpb*Fid, LabCM*Fid, delta

4-1032431-F0 RI370-7N_2533-F

grafico TUB-RI37; codice di tinte: H*d=B50Rd

immettere: rgb/cmyk -> rgbd

uscita: 3D-linearizzazione a cmy0*dd

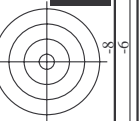
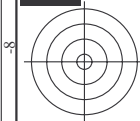
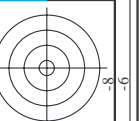
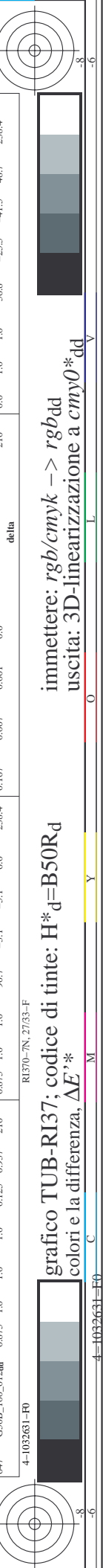
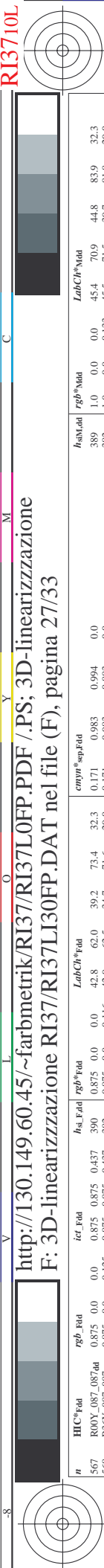
vedere dei file simili: http://130.149.60.45/~farbmetrik/RI37/RI37.HTM

informazioni tecniche: http://www.ps.bam.de o http://130.149.60.45/~farbmetrik

n	HC*Fid	rgb_Fid	icr_Fid	hsa_Fid	rgb*Fid	LabC0*Fid	cmyp*sep.Fid	ha_m.Fid	rgb*Mid	LabC0*Mid	delta
486	ROY0_075_075Mid	0.75	0.0	0.75	0.75	40.2	0.951	389	1.0	0.0	33.6
487	R35Y_075_075Mid	0.75	0.0	0.12	0.75	40.2	0.956	390	1.0	0.0	62.9
488	R18Y_075_075Mid	0.75	0.0	0.25	0.75	40.2	0.956	391	1.0	0.0	61.1
489	ROY0_075_075Mid	0.75	0.0	0.375	0.75	40.2	0.955	392	1.0	0.0	28.5
490	B6SK_075_075Mid	0.75	0.0	0.5	0.75	40.2	0.953	393	1.0	0.0	17.6
491	B57K_075_075Mid	0.75	0.0	0.625	0.75	40.2	0.954	394	1.0	0.0	53.8
492	B30K_075_075Mid	0.75	0.0	0.75	0.75	40.2	0.957	395	1.0	0.0	15.9
493	B48K_087_087Mid	0.75	0.0	0.875	0.875	40.6	0.956	396	1.0	0.0	8.9
494	B38L_100_100Mid	0.75	0.0	1.0	1.0	41.1	0.956	397	1.0	0.0	58.6
495	R15Y_075_075Mid	0.75	0.125	0.0	0.75	40.6	0.956	398	1.0	0.0	3.7
496	ROY0_075_062Mid	0.75	0.125	0.125	0.75	40.6	0.956	399	1.0	0.0	35.9
497	R31Y_075_062Mid	0.75	0.125	0.25	0.75	40.6	0.956	400	1.0	0.0	46.5
498	R11Y_075_062Mid	0.75	0.125	0.375	0.75	40.6	0.956	401	1.0	0.0	5.4
499	B69K_075_062Mid	0.75	0.125	0.5	0.75	40.6	0.956	402	1.0	0.0	27.8
500	B59K_075_062Mid	0.75	0.125	0.625	0.75	40.6	0.956	403	1.0	0.0	48.8
501	B59K_075_062Mid	0.75	0.125	0.75	0.75	40.6	0.956	404	1.0	0.0	11.4
502	B42K_087_087Mid	0.75	0.125	0.875	0.875	41.1	0.956	405	1.0	0.0	48.7
503	B36L_100_100Mid	0.75	0.125	1.0	1.0	41.1	0.956	406	1.0	0.0	35.9
504	R18Y_075_062Mid	0.75	0.25	0.0	0.75	40.6	0.956	407	1.0	0.0	1.5
505	R18Y_075_062Mid	0.75	0.25	0.125	0.75	40.6	0.956	408	1.0	0.0	44.4
506	R26Y_075_059Mid	0.75	0.25	0.25	0.75	40.6	0.956	409	1.0	0.0	56.2
507	R26Y_075_059Mid	0.75	0.25	0.375	0.75	40.6	0.956	410	1.0	0.0	22.4
508	ROY0_075_059Mid	0.75	0.25	0.5	0.75	40.6	0.956	411	1.0	0.0	40.1
509	B01K_075_059Mid	0.75	0.25	0.625	0.75	40.6	0.956	412	1.0	0.0	10.5
510	B30K_075_059Mid	0.75	0.25	0.75	0.75	40.6	0.956	413	1.0	0.0	38.8
511	B34R_100_075Mid	0.75	0.25	0.875	0.875	41.1	0.956	414	1.0	0.0	3.9
512	B34R_100_075Mid	0.75	0.25	1.0	1.0	41.1	0.956	415	1.0	0.0	46.3
513	R38Y_075_059Mid	0.75	0.375	0.0	0.75	40.6	0.956	416	1.0	0.0	3.1
514	R38Y_075_059Mid	0.75	0.375	0.125	0.75	40.6	0.956	417	1.0	0.0	51.5
515	R23Y_075_059Mid	0.75	0.375	0.25	0.75	40.6	0.956	418	1.0	0.0	67.6
516	R37Y_075_059Mid	0.75	0.375	0.375	0.75	40.6	0.956	419	1.0	0.0	24.7
517	R18Y_075_059Mid	0.75	0.375	0.5	0.75	40.6	0.956	420	1.0	0.0	38.2
518	B69K_075_059Mid	0.75	0.375	0.625	0.75	40.6	0.956	421	1.0	0.0	31.4
519	B59K_075_059Mid	0.75	0.375	0.75	0.75	40.6	0.956	422	1.0	0.0	29.6
520	B38L_100_062Mid	0.75	0.375	1.0	1.0	41.1	0.956	423	1.0	0.0	4.4
521	R68Y_075_059Mid	0.75	0.5	0.0	0.75	40.6	0.956	424	1.0	0.0	29.7
522	R61Y_075_059Mid	0.75	0.5	0.125	0.75	40.6	0.956	425	1.0	0.0	35.8
523	R61Y_075_059Mid	0.75	0.5	0.25	0.75	40.6	0.956	426	1.0	0.0	4.3
524	R31Y_075_059Mid	0.75	0.5	0.375	0.75	40.6	0.956	427	1.0	0.0	60.3
525	ROY0_075_059Mid	0.75	0.5	0.5	0.75	40.6	0.956	428	1.0	0.0	8.2
526	R31Y_075_059Mid	0.75	0.5	0.625	0.75	40.6	0.956	429	1.0	0.0	47.9
527	ROY0_075_059Mid	0.75	0.5	0.75	0.75	40.6	0.956	430	1.0	0.0	34.3
528	B50K_075_059Mid	0.75	0.5	0.625	0.75	40.6	0.956	431	1.0	0.0	67.1
529	B34R_087_037Mid	0.75	0.5	0.75	0.75	41.1	0.956	432	1.0	0.0	28.1
530	B25R_100_059Mid	0.75	0.5	0.875	0.875	41.1	0.956	433	1.0	0.0	22.2
531	R88Y_075_059Mid	0.75	0.625	0.0	0.75	40.6	0.956	434	1.0	0.0	11.2
532	R88Y_075_059Mid	0.75	0.625	0.125	0.75	40.6	0.956	435	1.0	0.0	19.8
533	R76Y_075_059Mid	0.75	0.625	0.25	0.75	40.6	0.956	436	1.0	0.0	25.9
534	R68Y_075_059Mid	0.75	0.625	0.375	0.75	40.6	0.956	437	1.0	0.0	31.0
535	ROY0_075_059Mid	0.75	0.625	0.5	0.75	40.6	0.956	438	1.0	0.0	48.9
536	ROY0_075_059Mid	0.75	0.625	0.625	0.75	40.6	0.956	439	1.0	0.0	66.7
537	B50K_075_059Mid	0.75	0.625	0.75	0.75	40.6	0.956	440	1.0	0.0	4.5
538	B23R_100_059Mid	0.75	0.625	0.875	0.875	41.1	0.956	441	1.0	0.0	67.1
539	B13K_100_059Mid	0.75	0.625	1.0	1.0	41.1	0.956	442	1.0	0.0	8.9
540	Y06C_075_059Mid	0.75	0.75	0.0	0.75	40.6	0.956	443	1.0	0.0	67.1
541	Y06C_075_059Mid	0.75	0.75	0.125	0.75	40.6	0.956	444	1.0	0.0	18.6
542	Y06C_075_059Mid	0.75	0.75	0.25	0.75	40.6	0.956	445	1.0	0.0	6.7
543	Y06C_075_059Mid	0.75	0.75	0.375	0.75	40.6	0.956	446	1.0	0.0	34.4
544	Y06C_075_059Mid	0.75	0.75	0.5	0.75	40.6	0.956	447	1.0	0.0	8.2
545	Y06C_075_059Mid	0.75	0.75	0.625	0.75	40.6	0.956	448	1.0	0.0	67.1
546	NW_075_54Mid	0.75	0.75	0.0	0.75	40.6	0.956	449	1.0	0.0	54.6
547	B08K_087_012Mid	0.75	0.75	0.125	0.875	41.1	0.956	450	1.0	0.0	8.9
548	B08K_100_025Mid	0.75	0.75	0.25	0.875	41.1	0.956	451	1.0	0.0	66.7
549	Y13G_087_087Mid	0.75	0.75	0.375	0.875	41.1	0.956	452	1.0	0.0	4.4
550	Y18G_087_062Mid	0.75	0.75	0.5	0.875	41.1	0.956	453	1.0	0.0	29.6
551	Y18G_087_062Mid	0.75	0.75	0.625	0.875	41.1	0.956	454	1.0	0.0	34.3
552	Y23G_087_059Mid	0.75	0.75	0.75	0.875	41.1	0.956	455	1.0	0.0	4.4
553	Y31G_087_037Mid	0.75	0.75	0.875	0.875	41.1	0.956	456	1.0	0.0	67.1
554	Y50C_087_025Mid	0.75	0.75	1.0	1.0	41.1	0.956	457	1.0	0.0	18.2
555	G00B_087_012Mid	0.75	0.75	0.875	0.875	41.1	0.956	458	1.0	0.0	8.9
556	G00B_087_012Mid	0.75	0.75	0.875	0.875	41.1	0.956	459	1.0	0.0	66.7
557	G53B_100_025Mid	0.75	0.75	0.0	0.875	41.1	0.956	460	1.0	0.0	4.4
558	Y23C_100_025Mid	0.75	0.75	0.1	1.0	41.1	0.956	461	1.0	0.0	29.6
559	Y26C_100_087Mid	0.75	0.75	0.125	1.0	41.1	0.956	462	1.0	0.0	8.9
560	Y31G_100_075Mid	0.75	0.75	0.25	1.0	41.1	0.956	463	1.0	0.0	66.7
561	Y38G_100_062Mid	0.75	0.75	0.375	1.0	41.1	0.956	464	1.0	0.0	4.4
562	Y50G_100_059Mid	0.75	0.75	0.5	1.0	41.1	0.956	465	1.0	0.0	29.6
563	Y68C_100_037Mid	0.75	0.75	0.625	1.0	41.1	0.956	466	1.0	0.0	8.9
564	G25B_100_025Mid	0.75	0.75	0.75	1.0	41.1	0.956	467	1.0	0.0	66.7
565	G25B_100_025Mid	0.75	0.75	0.875	1.0	41.1	0.956	468	1.0	0.0	4.4
566	G50B_100_025Mid	0.75	0.75	1.0	1.0	41.1	0.956	469	1.0	0.0	29.6

immettere: **rgb/cmyk** -> **rgbb**
uscita: **3D-linearizzazione a cmy0***

grafico TUB-RI37; codice di tinte: H*_d=B50Rd
colori e la differenza, ΔE^*



n	HC*Fid	rgb_Fid	icr_Fid	hsa_Fid	rgb*Fid	LabC*Fid	cmyp*sep.Fid	Lab.Fid	HsA.Fid	rgb*Fid	LabC*Fid	delta
567	ROYG_087_087Ad	0.875	0.0	0.875	0.875	0.437	390	0.171	0.983	0.0	0.994	0.0
568	ROYG_087_087Ad	0.875	0.0	0.875	0.875	0.437	382	0.171	0.983	0.0	0.983	83.9
569	ROYG_087_087Ad	0.875	0.0	0.875	0.875	0.437	374	0.171	0.983	0.0	0.983	81.8
570	ROYG_087_087Ad	0.875	0.0	0.875	0.875	0.437	365	0.171	0.983	0.0	0.983	29.0
571	ROYG_087_087Ad	0.875	0.0	0.875	0.875	0.437	355	0.171	0.983	0.0	0.983	79.8
572	ROYG_087_087Ad	0.875	0.0	0.875	0.875	0.437	346	0.171	0.983	0.0	0.983	25.0
573	ROYG_087_087Ad	0.875	0.0	0.875	0.875	0.437	338	0.171	0.983	0.0	0.983	77.9
574	ROYG_087_087Ad	0.875	0.0	0.875	0.875	0.437	330	0.171	0.983	0.0	0.983	12.7
575	ROYG_087_087Ad	0.875	0.0	0.875	0.875	0.437	323	0.171	0.983	0.0	0.983	70.0
576	ROYG_087_087Ad	0.875	0.0	0.875	0.875	0.437	315	0.171	0.983	0.0	0.983	3.2
577	ROYG_087_087Ad	0.875	0.0	0.875	0.875	0.437	308	0.171	0.983	0.0	0.983	79.3
578	ROYG_087_087Ad	0.875	0.0	0.875	0.875	0.437	301	0.171	0.983	0.0	0.983	359.8
579	ROYG_087_087Ad	0.875	0.0	0.875	0.875	0.437	294	0.171	0.983	0.0	0.983	75.4
580	ROYG_087_087Ad	0.875	0.0	0.875	0.875	0.437	287	0.171	0.983	0.0	0.983	37.7
581	ROYG_087_087Ad	0.875	0.0	0.875	0.875	0.437	280	0.171	0.983	0.0	0.983	79.6
582	ROYG_087_087Ad	0.875	0.0	0.875	0.875	0.437	273	0.171	0.983	0.0	0.983	356.3
583	ROYG_087_087Ad	0.875	0.0	0.875	0.875	0.437	266	0.171	0.983	0.0	0.983	75.4
584	ROYG_087_087Ad	0.875	0.0	0.875	0.875	0.437	259	0.171	0.983	0.0	0.983	37.7
585	ROYG_087_087Ad	0.875	0.0	0.875	0.875	0.437	252	0.171	0.983	0.0	0.983	79.6
586	ROYG_087_087Ad	0.875	0.0	0.875	0.875	0.437	245	0.171	0.983	0.0	0.983	356.3
587	ROYG_087_087Ad	0.875	0.0	0.875	0.875	0.437	238	0.171	0.983	0.0	0.983	75.4
588	ROYG_087_087Ad	0.875	0.0	0.875	0.875	0.437	231	0.171	0.983	0.0	0.983	37.7
589	ROYG_087_087Ad	0.875	0.0	0.875	0.875	0.437	224	0.171	0.983	0.0	0.983	79.6
590	ROYG_087_087Ad	0.875	0.0	0.875	0.875	0.437	217	0.171	0.983	0.0	0.983	356.3
591	ROYG_087_087Ad	0.875	0.0	0.875	0.875	0.437	210	0.171	0.983	0.0	0.983	75.4
592	ROYG_087_087Ad	0.875	0.0	0.875	0.875	0.437	203	0.171	0.983	0.0	0.983	37.7
593	ROYG_087_087Ad	0.875	0.0	0.875	0.875	0.437	196	0.171	0.983	0.0	0.983	79.6
594	ROYG_087_087Ad	0.875	0.0	0.875	0.875	0.437	189	0.171	0.983	0.0	0.983	356.3
595	ROYG_087_087Ad	0.875	0.0	0.875	0.875	0.437	182	0.171	0.983	0.0	0.983	75.4
596	ROYG_087_087Ad	0.875	0.0	0.875	0.875	0.437	175	0.171	0.983	0.0	0.983	37.7
597	ROYG_087_087Ad	0.875	0.0	0.875	0.875	0.437	168	0.171	0.983	0.0	0.983	79.6
598	ROYG_087_087Ad	0.875	0.0	0.875	0.875	0.437	161	0.171	0.983	0.0	0.983	356.3
599	ROYG_087_087Ad	0.875	0.0	0.875	0.875	0.437	154	0.171	0.983	0.0	0.983	75.4
600	ROYG_087_087Ad	0.875	0.0	0.875	0.875	0.437	147	0.171	0.983	0.0	0.983	37.7
601	ROYG_087_087Ad	0.875	0.0	0.875	0.875	0.437	140	0.171	0.983	0.0	0.983	79.6
602	ROYG_087_087Ad	0.875	0.0	0.875	0.875	0.437	133	0.171	0.983	0.0	0.983	356.3
603	ROYG_087_087Ad	0.875	0.0	0.875	0.875	0.437	126	0.171	0.983	0.0	0.983	75.4
604	ROYG_087_087Ad	0.875	0.0	0.875	0.875	0.437	119	0.171	0.983	0.0	0.983	37.7
605	ROYG_087_087Ad	0.875	0.0	0.875	0.875	0.437	112	0.171	0.983	0.0	0.983	79.6
606	ROYG_087_087Ad	0.875	0.0	0.875	0.875	0.437	105	0.171	0.983	0.0	0.983	356.3
607	ROYG_087_087Ad	0.875	0.0	0.875	0.875	0.437	98	0.171	0.983	0.0	0.983	75.4
608	ROYG_087_087Ad	0.875	0.0	0.875	0.875	0.437	91	0.171	0.983	0.0	0.983	37.7
609	ROYG_087_087Ad	0.875	0.0	0.875	0.875	0.437	84	0.171	0.983	0.0	0.983	79.6
610	ROYG_087_087Ad	0.875	0.0	0.875	0.875	0.437	77	0.171	0.983	0.0	0.983	356.3
611	ROYG_087_087Ad	0.875	0.0	0.875	0.875	0.437	70	0.171	0.983	0.0	0.983	75.4
612	ROYG_087_087Ad	0.875	0.0	0.875	0.875	0.437	63	0.171	0.983	0.0	0.983	37.7
613	ROYG_087_087Ad	0.875	0.0	0.875	0.875	0.437	56	0.171	0.983	0.0	0.983	79.6
614	ROYG_087_087Ad	0.875	0.0	0.875	0.875	0.437	49	0.171	0.983	0.0	0.983	356.3
615	ROYG_087_087Ad	0.875	0.0	0.875	0.875	0.437	42	0.171	0.983	0.0	0.983	75.4
616	ROYG_087_087Ad	0.875	0.0	0.875	0.875	0.437	35	0.171	0.983	0.0	0.983	37.7
617	ROYG_087_087Ad	0.875	0.0	0.875	0.875	0.437	28	0.171	0.983	0.0	0.983	79.6
618	ROYG_087_087Ad	0.875	0.0	0.875	0.875	0.437	21	0.171	0.983	0.0	0.983	356.3
619	ROYG_087_087Ad	0.875	0.0	0.875	0.875	0.437	14	0.171	0.983	0.0	0.983	75.4
620	ROYG_087_087Ad	0.875	0.0	0.875	0.875	0.437	7	0.171	0.983	0.0	0.983	37.7
621	ROYG_087_087Ad	0.875	0.0	0.875	0.875	0.437	0	0.171	0.983	0.0	0.983	79.6
622	ROYG_087_087Ad	0.875	0.0	0.875	0.875	0.437	-7	0.171	0.983	0.0	0.983	356.3
623	ROYG_087_087Ad	0.875	0.0	0.875	0.875	0.437	-14	0.171	0.983	0.0	0.983	75.4
624	ROYG_087_087Ad	0.875	0.0	0.875	0.875	0.437	-21	0.171	0.983	0.0	0.983	37.7
625	ROYG_087_087Ad	0.875	0.0	0.875	0.875	0.437	-28	0.171	0.983	0.0	0.983	79.6
626	ROYG_087_087Ad	0.875	0.0	0.875	0.875	0.437	-35	0.171	0.983	0.0	0.983	356.3
627	ROYG_087_087Ad	0.875	0.0	0.875	0.875	0.437	-42	0.171	0.983	0.0	0.983	75.4
628	ROYG_087_087Ad	0.875	0.0	0.875	0.875	0.437	-49	0.171	0.983	0.0	0.983	37.7
629	ROYG_087_087Ad	0.875	0.0	0.875	0.875	0.437	-56	0.171	0.983	0.0	0.983	79.6
630	ROYG_087_087Ad	0.875	0.0	0.875	0.875	0.437	-63	0.171	0.983	0.0	0.983	356.3
631	ROYG_087_087Ad	0.875	0.0	0.875	0.875	0.437	-70	0.171	0.983	0.0	0.983	75.4
632	ROYG_087_087Ad	0.875	0.0	0.875	0.875	0.437	-77	0.171	0.983	0.0	0.983	37.7
633	ROYG_087_087Ad	0.875	0.0	0.875	0.875	0.437	-84	0.171	0.983	0.0	0.983	79.6
634	ROYG_087_087Ad	0.875	0.0	0.875	0.875	0.437	-91	0.171	0.983	0.0	0.983	356.3
635	ROYG_087_087Ad	0.875	0.0	0.875	0.875	0.437	-98	0.171	0.983	0.0	0.983	75.4
636	ROYG_087_087Ad	0.875	0.0	0.875	0.875	0.437	-105	0.171	0.983	0.0	0.983	37.7
637	ROYG_087_087Ad	0.875	0.0	0.875	0.875	0.437	-112	0.171	0.983	0.0	0.983	79.6
638	ROYG_087_087Ad	0.875	0.0	0.875	0.875	0.437	-119	0.171	0.983	0.0	0.983	356.3
639	ROYG_087_087Ad	0.875	0.0	0.875	0.875	0.437	-126	0.171	0.983	0.0	0.983	75.4
640	ROYG_087_087Ad	0.875	0.0	0.875	0.875	0.437	-133	0.171	0.983	0.0	0.983	37.7
641	ROYG_087_087Ad	0.875	0.0	0.875	0.875	0.437	-140	0.171	0.983	0.0	0.983	79.6
642	ROYG_087_087Ad	0.875	0.0	0.875	0.875	0.437	-147	0.171	0.983	0.0	0.983	356.3
643	ROYG_087_087Ad	0.875	0.0	0.875	0.875	0.437	-154	0.171	0.983	0.0	0.983	75.4
644	ROYG_087_087Ad	0.875	0.0	0.875	0.875	0.437	-161	0.171	0.983	0.0	0.983	37.7
645	ROYG_087_087Ad	0.875	0.0	0.875	0.875	0.437	-168	0.171	0.983	0.0	0.983	79.6
646	ROYG_087_087Ad	0.875	0.0	0.875	0.875	0.437	-175	0.171	0.983	0.0	0.983	356.3
647	ROYG_087_087Ad	0.875	0.0	0.875	0.875	0.437	-182	0.171	0.983	0.0	0.983	75.4

immettere: rgb/cmyk -> rgbd uscita: 3D-linearizzazione a cmy0*dd

grafico TUB-RI37; codice di tinte: H*d=B50Rd colori e la differenza, ΔE*

4-1032631-F0

RI370-7N, 27/33-F

n	HC*Fid	rgb_Fid	icr_Fid	hsa_Fid	rgb*Fid	LabC*Fid	cmy0*_sep.Fid	hsa_did	rgb*did	LabC*did	delta
972	NW_0000ad	0.0	0.0	0.0	0.0	24.3	0.0	360	1.0	1.0	0.0
973	NW_0120ad	0.125	0.125	0.125	0.0	24.3	0.0	360	1.0	1.0	0.0
974	NW_0240ad	0.25	0.25	0.25	0.0	24.3	0.0	360	1.0	1.0	0.0
975	NW_0360ad	0.375	0.375	0.375	0.0	24.3	0.0	360	1.0	1.0	0.0
976	NW_0480ad	0.5	0.5	0.5	0.0	24.3	0.0	360	1.0	1.0	0.0
977	NW_0600ad	0.625	0.625	0.625	0.0	24.3	0.0	360	1.0	1.0	0.0
978	NW_0720ad	0.75	0.75	0.75	0.0	24.3	0.0	360	1.0	1.0	0.0
979	NW_0840ad	0.875	0.875	0.875	0.0	24.3	0.0	360	1.0	1.0	0.0
980	NW_1000ad	1.0	1.0	1.0	0.0	24.3	0.0	360	1.0	1.0	0.0
981	NW_0000ad	0.0	0.0	0.0	0.0	24.3	0.0	360	1.0	1.0	0.0
982	NW_0120ad	0.125	0.125	0.125	0.0	24.3	0.0	360	1.0	1.0	0.0
983	NW_0240ad	0.25	0.25	0.25	0.0	24.3	0.0	360	1.0	1.0	0.0
984	NW_0360ad	0.375	0.375	0.375	0.0	24.3	0.0	360	1.0	1.0	0.0
985	NW_0480ad	0.5	0.5	0.5	0.0	24.3	0.0	360	1.0	1.0	0.0
986	NW_0600ad	0.625	0.625	0.625	0.0	24.3	0.0	360	1.0	1.0	0.0
987	NW_0720ad	0.75	0.75	0.75	0.0	24.3	0.0	360	1.0	1.0	0.0
988	NW_0840ad	0.875	0.875	0.875	0.0	24.3	0.0	360	1.0	1.0	0.0
989	NW_1000ad	1.0	1.0	1.0	0.0	24.3	0.0	360	1.0	1.0	0.0
990	NW_0000ad	0.0	0.0	0.0	0.0	24.3	0.0	360	1.0	1.0	0.0
991	NW_0120ad	0.125	0.125	0.125	0.0	24.3	0.0	360	1.0	1.0	0.0
992	NW_0240ad	0.25	0.25	0.25	0.0	24.3	0.0	360	1.0	1.0	0.0
993	NW_0360ad	0.375	0.375	0.375	0.0	24.3	0.0	360	1.0	1.0	0.0
994	NW_0480ad	0.5	0.5	0.5	0.0	24.3	0.0	360	1.0	1.0	0.0
995	NW_0600ad	0.625	0.625	0.625	0.0	24.3	0.0	360	1.0	1.0	0.0
996	NW_0720ad	0.75	0.75	0.75	0.0	24.3	0.0	360	1.0	1.0	0.0
997	NW_0840ad	0.875	0.875	0.875	0.0	24.3	0.0	360	1.0	1.0	0.0
998	NW_1000ad	1.0	1.0	1.0	0.0	24.3	0.0	360	1.0	1.0	0.0
999	NW_0000ad	0.0	0.0	0.0	0.0	24.3	0.0	360	1.0	1.0	0.0
1000	NW_0120ad	0.125	0.125	0.125	0.0	24.3	0.0	360	1.0	1.0	0.0
1001	NW_0240ad	0.25	0.25	0.25	0.0	24.3	0.0	360	1.0	1.0	0.0
1002	NW_0360ad	0.375	0.375	0.375	0.0	24.3	0.0	360	1.0	1.0	0.0
1003	NW_0480ad	0.5	0.5	0.5	0.0	24.3	0.0	360	1.0	1.0	0.0
1004	NW_0600ad	0.625	0.625	0.625	0.0	24.3	0.0	360	1.0	1.0	0.0
1005	NW_0720ad	0.75	0.75	0.75	0.0	24.3	0.0	360	1.0	1.0	0.0
1006	NW_0840ad	0.875	0.875	0.875	0.0	24.3	0.0	360	1.0	1.0	0.0
1007	NW_1000ad	1.0	1.0	1.0	0.0	24.3	0.0	360	1.0	1.0	0.0
1008	NW_0000ad	0.066	0.066	0.066	0.0	24.3	0.0	360	1.0	1.0	0.0
1009	NW_0060ad	0.133	0.133	0.133	0.0	24.3	0.0	360	1.0	1.0	0.0
1010	NW_0120ad	0.2	0.2	0.2	0.0	24.3	0.0	360	1.0	1.0	0.0
1011	NW_0180ad	0.266	0.266	0.266	0.0	24.3	0.0	360	1.0	1.0	0.0
1012	NW_0240ad	0.333	0.333	0.333	0.0	24.3	0.0	360	1.0	1.0	0.0
1013	NW_0300ad	0.4	0.4	0.4	0.0	24.3	0.0	360	1.0	1.0	0.0
1014	NW_0360ad	0.466	0.466	0.466	0.0	24.3	0.0	360	1.0	1.0	0.0
1015	NW_0420ad	0.533	0.533	0.533	0.0	24.3	0.0	360	1.0	1.0	0.0
1016	NW_0480ad	0.6	0.6	0.6	0.0	24.3	0.0	360	1.0	1.0	0.0
1017	NW_0540ad	0.666	0.666	0.666	0.0	24.3	0.0	360	1.0	1.0	0.0
1018	NW_0600ad	0.734	0.734	0.734	0.0	24.3	0.0	360	1.0	1.0	0.0
1019	NW_0660ad	0.8	0.8	0.8	0.0	24.3	0.0	360	1.0	1.0	0.0
1020	NW_0720ad	0.866	0.866	0.866	0.0	24.3	0.0	360	1.0	1.0	0.0
1021	NW_0780ad	0.933	0.933	0.933	0.0	24.3	0.0	360	1.0	1.0	0.0
1022	NW_0840ad	1.0	1.0	1.0	0.0	24.3	0.0	360	1.0	1.0	0.0
1023	NW_1000ad	0.066	0.066	0.066	0.0	24.3	0.0	360	1.0	1.0	0.0
1024	NW_0060ad	0.133	0.133	0.133	0.0	24.3	0.0	360	1.0	1.0	0.0
1025	NW_0120ad	0.2	0.2	0.2	0.0	24.3	0.0	360	1.0	1.0	0.0
1026	NW_0180ad	0.266	0.266	0.266	0.0	24.3	0.0	360	1.0	1.0	0.0
1027	NW_0240ad	0.333	0.333	0.333	0.0	24.3	0.0	360	1.0	1.0	0.0
1028	NW_0300ad	0.4	0.4	0.4	0.0	24.3	0.0	360	1.0	1.0	0.0
1029	NW_0360ad	0.466	0.466	0.466	0.0	24.3	0.0	360	1.0	1.0	0.0
1030	NW_0420ad	0.533	0.533	0.533	0.0	24.3	0.0	360	1.0	1.0	0.0
1031	NW_0480ad	0.6	0.6	0.6	0.0	24.3	0.0	360	1.0	1.0	0.0
1032	NW_0540ad	0.666	0.666	0.666	0.0	24.3	0.0	360	1.0	1.0	0.0
1033	NW_0600ad	0.734	0.734	0.734	0.0	24.3	0.0	360	1.0	1.0	0.0
1034	NW_0660ad	0.8	0.8	0.8	0.0	24.3	0.0	360	1.0	1.0	0.0
1035	NW_0720ad	0.866	0.866	0.866	0.0	24.3	0.0	360	1.0	1.0	0.0
1036	NW_0780ad	0.933	0.933	0.933	0.0	24.3	0.0	360	1.0	1.0	0.0
1037	NW_0840ad	1.0	1.0	1.0	0.0	24.3	0.0	360	1.0	1.0	0.0
1038	NW_0900ad	0.066	0.066	0.066	0.0	24.3	0.0	360	1.0	1.0	0.0
1039	NW_0960ad	0.133	0.133	0.133	0.0	24.3	0.0	360	1.0	1.0	0.0
1040	NW_1000ad	0.2	0.2	0.2	0.0	24.3	0.0	360	1.0	1.0	0.0
1041	NW_0060ad	0.266	0.266	0.266	0.0	24.3	0.0	360	1.0	1.0	0.0
1042	NW_0120ad	0.333	0.333	0.333	0.0	24.3	0.0	360	1.0	1.0	0.0
1043	NW_0180ad	0.4	0.4	0.4	0.0	24.3	0.0	360	1.0	1.0	0.0
1044	NW_0240ad	0.466	0.466	0.466	0.0	24.3	0.0	360	1.0	1.0	0.0
1045	NW_0300ad	0.533	0.533	0.533	0.0	24.3	0.0	360	1.0	1.0	0.0
1046	NW_0360ad	0.6	0.6	0.6	0.0	24.3	0.0	360	1.0	1.0	0.0
1047	NW_0420ad	0.666	0.666	0.666	0.0	24.3	0.0	360	1.0	1.0	0.0
1048	NW_0480ad	0.734	0.734	0.734	0.0	24.3	0.0	360	1.0	1.0	0.0
1049	NW_0540ad	0.8	0.8	0.8	0.0	24.3	0.0	360	1.0	1.0	0.0
1050	NW_0600ad	0.866	0.866	0.866	0.0	24.3	0.0	360	1.0	1.0	0.0
1051	NW_0660ad	0.933	0.933	0.933	0.0	24.3	0.0	360	1.0	1.0	0.0
1052	NW_0720ad	1.0	1.0	1.0	0.0	24.3	0.0	360	1.0	1.0	0.0

immettere: rgb/cmyk -> rgbd
uscita: 3D-linearizzazione a cmy0*dd

grafico TUB-RI37; codice di tinte: H*_d=B50Rd
colori e la differenza, ΔE*
RI370-7N_3233-F

