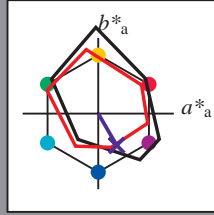


Immettere y uscita: Printer Reflective System FRS06a for relative CIELAB hue $h_{ab,a,rel} = h_{ab}/360 = 300/360 = 0.83$

Dati del dispositivo (d) o colori elementari (e):

HIC^*_e
codice di tonalità per i colori questa pagina:
 $H^*_e = B25R_e$
triangolo chiarezza T^*



LRS18a; dati atti CIELAB (a)

name	$L^*=L^*_a$	a^*_a	b^*_a	$C^*_{ab,a}$	$h^*_{ab,a}$
$R_{e, Ma}$	47.5	56.0	26.7	62.1	25
$Y_{e, Ma}$	83.6	-3.1	76.8	76.9	92
$G_{e, Ma}$	53.8	-65.9	21.1	69.2	162
$C_{e, Ma}$	54.9	-38.7	-29.1	48.4	216
$B_{e, Ma}$	37.3	1.4	-48.6	48.7	271
$M_{e, Ma}$	38.5	46.7	-28.5	54.7	328
$N_{e, Ma}$	23.8	0.0	0.0	0.0	0
$W_{e, Ma}$	95.8	0.0	0.0	0.0	0
$R_{e, CIE}$	39.9	58.7	27.9	65.0	25
$Y_{e, CIE}$	81.2	-2.8	71.5	71.6	92
$G_{e, CIE}$	52.2	-42.4	13.6	44.5	162
$B_{e, CIE}$	30.5	1.4	-46.4	46.4	271

Il dati per il massimo colore (Ma):

$LabCh^*_{e, Ma}$: 31 24 -41 48 300

$HIC^*_{e, Ma}$: B25R_100_100_e

$rgbic^*_{e, Ma}$:

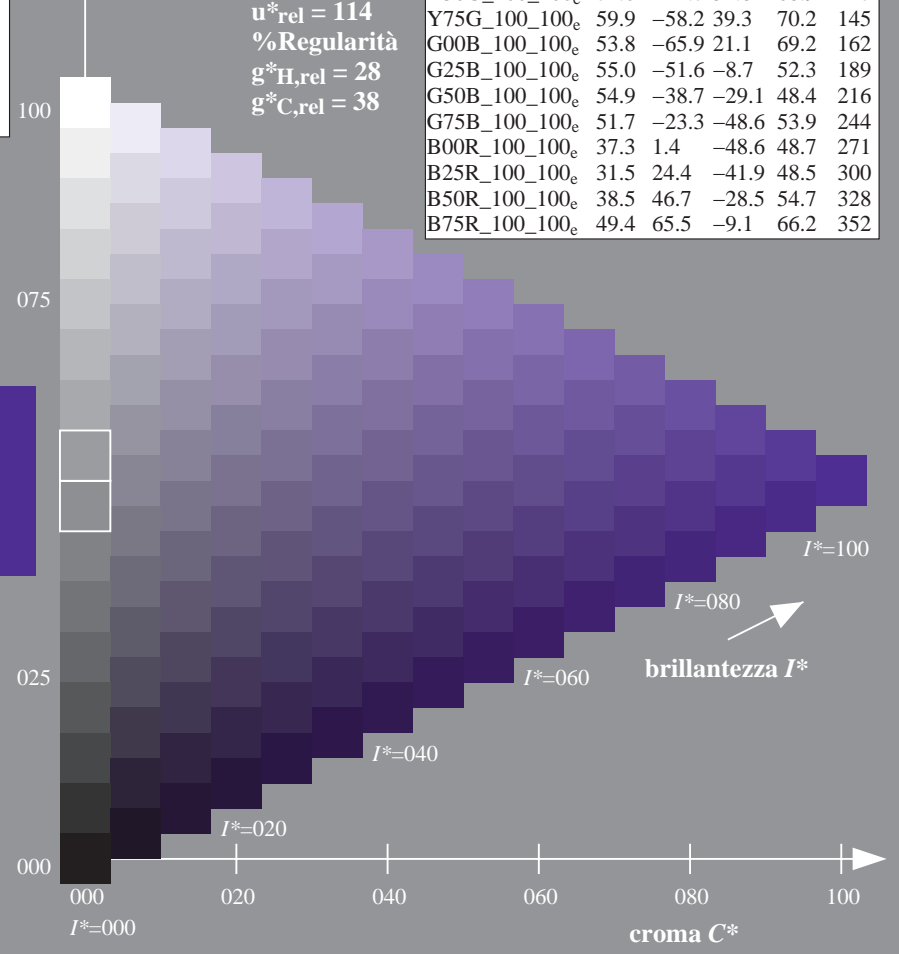
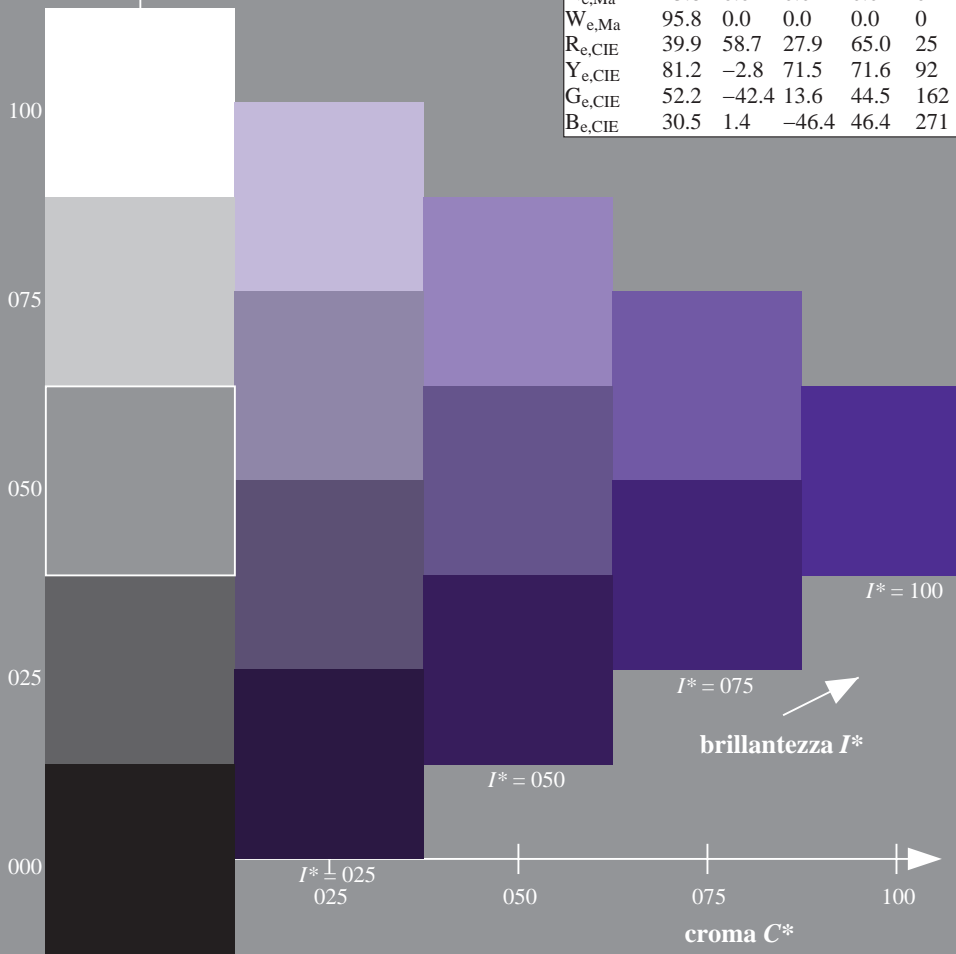
0.13 0.0 1.0 1.0 1.0

triangolo chiarezza T^*

LRS18a; dati atti CIELAB (a)

H^*_e	$L^*=L^*_a$	a^*_a	b^*_a	$C^*_{ab,a}$	$h^*_{ab,a}$
$R00Y_{100_100_e}$	47.5	56.0	26.7	62.1	25
$R25Y_{100_100_e}$	51.4	54.8	47.7	72.6	41
$R50Y_{100_100_e}$	61.8	35.2	58.4	68.2	58
$R75Y_{100_100_e}$	72.3	16.1	68.2	70.1	76
$Y00G_{100_100_e}$	83.6	-3.1	76.8	76.9	92
$Y25G_{100_100_e}$	85.8	-26.4	78.5	82.9	108
$Y50G_{100_100_e}$	71.0	-41.7	54.8	68.9	127
$Y75G_{100_100_e}$	59.9	-58.2	39.3	70.2	145
$G00B_{100_100_e}$	53.8	-65.9	21.1	69.2	162
$G25B_{100_100_e}$	55.0	-51.6	-8.7	52.3	189
$G50B_{100_100_e}$	54.9	-38.7	-29.1	48.4	216
$G75B_{100_100_e}$	51.7	-23.3	-48.6	53.9	244
$B00R_{100_100_e}$	37.3	1.4	-48.6	48.7	271
$B25R_{100_100_e}$	31.5	24.4	-41.9	48.5	300
$B50R_{100_100_e}$	38.5	46.7	-28.5	54.7	328
$B75R_{100_100_e}$	49.4	65.5	-9.1	66.2	352

%Gamma
 $u^*_{rel} = 114$
%Regularità
 $g^*_{H,rel} = 28$
 $g^*_{C,rel} = 38$



vedere dei file simili: http://130.149.60.45/~farbmetrik/RI29/RI29LONP.PDF /.PS
Informazioni tecniche: http://www.ps.bam.de o http://130.149.60.45/~farbmetrik

TUB iscrizione: 20130201-RI29/RI29LONP.PDF /.PS
la domanda per la misura di uscita della stampante laser, separazione cmykn (CMYK)
TUB materiale: code=rhata4ta

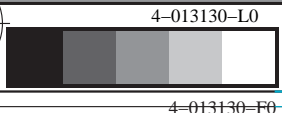


grafico TUB-RI29; codice di tinte: $H^*_e=B25R_e$
grafico conformemente a DIN 33872, 3D=0, de=1, cmyk

immettere: $rgb/cmyk \rightarrow rgb_e$
uscita: trasferire a $cmyk_e$

