

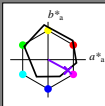
http://130.149.60.45/~farbmetrik/RI22/RI22L0N1.TXT/.PS; cominciare l'uscita  
 N: nessun 3D-linearizzazione (OL) nel file (F) o PS-startup (S), pagina 1/1

H\*\_ = B25R\_

Immettere y uscita: Offset Reflective System ORS18a for relative CIELAB hue  $h_{ab,a,rel} = h_{ab}/360 = 331/360 = 0.92$

Dati del dispositivo (d) o colori elementari (e):

HIC\*\_  
 codice di tonalità per i colori  
 questa pagina:  
 H\*\_ = B25R\_  
 triangolo chiarezza T\*



**ORS18a; dati atti CIELAB (a)**

| name   | L*=L*_a | a*_a  | b*_a  | C*_ab,a | h*_ab,a |
|--------|---------|-------|-------|---------|---------|
| R_ Ma  | 47.9    | 65.3  | 50.5  | 82.6    | 37      |
| Y_ Ma  | 90.3    | -10.2 | 91.7  | 92.3    | 96      |
| G_ Ma  | 50.9    | -62.8 | 34.9  | 71.9    | 150     |
| C_ Ma  | 58.6    | -30.3 | -45.0 | 54.2    | 236     |
| B_ Ma  | 25.7    | 31.0  | -44.4 | 54.2    | 305     |
| M_ Ma  | 48.1    | 75.2  | -8.3  | 75.7    | 353     |
| N_ Ma  | 18.0    | 0.0   | 0.0   | 0.0     | 0       |
| W_ Ma  | 95.4    | 0.0   | 0.0   | 0.0     | 0       |
| R_ CIE | 39.9    | 58.7  | 27.9  | 65.0    | 25      |
| Y_ CIE | 81.2    | -2.8  | 71.5  | 71.6    | 92      |
| G_ CIE | 52.2    | -42.4 | 13.6  | 44.5    | 162     |
| B_ CIE | 30.5    | 1.4   | -46.4 | 46.4    | 271     |

Il dati per il massimo colore (Ma):

LabCh\*\_ Ma: 38 52 -28 59 331

HIC\*\_ Ma: B25R\_100\_100\_

rgbic\*\_ Ma:

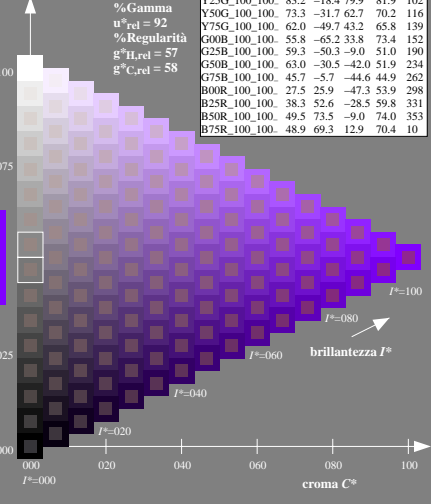
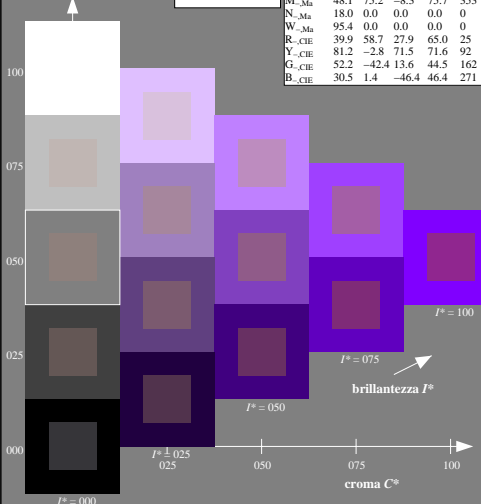
0.5 0.0 1.0 1.0 1.0

triangolo chiarezza T\*

%Gamma  
 $u^*_{rel} = 92$   
 %Regularità  
 $g^*_{H,rel} = 57$   
 $g^*_{C,rel} = 58$

**ORS20a; dati atti CIELAB (a)**

| H*_           | L*=L*_a | a*_a  | b*_a  | C*_ab,a | h*_ab,a |
|---------------|---------|-------|-------|---------|---------|
| R00Y_100_100_ | 48.4    | 66.1  | 40.2  | 77.3    | 31      |
| R25Y_100_100_ | 56.8    | 48.0  | 50.5  | 69.6    | 46      |
| R50Y_100_100_ | 68.6    | 25.0  | 63.9  | 68.6    | 68      |
| R75Y_100_100_ | 80.6    | 4.8   | 77.2  | 77.3    | 86      |
| Y00G_100_100_ | 90.2    | -9.6  | 88.2  | 88.7    | 96      |
| Y25G_100_100_ | 83.2    | -18.4 | 79.9  | 81.9    | 102     |
| Y50G_100_100_ | 73.3    | -31.7 | 62.7  | 70.2    | 116     |
| Y75G_100_100_ | 62.0    | -49.7 | 43.2  | 65.8    | 139     |
| G00B_100_100_ | 55.8    | -65.2 | 33.8  | 73.4    | 152     |
| G25B_100_100_ | 59.3    | -50.3 | -9.0  | 51.0    | 190     |
| G50B_100_100_ | 63.0    | -30.5 | -42.0 | 51.9    | 234     |
| G75B_100_100_ | 45.7    | -5.7  | -44.6 | 44.9    | 262     |
| B00R_100_100_ | 27.5    | 25.9  | -47.3 | 53.9    | 298     |
| B25R_100_100_ | 38.3    | 52.6  | -28.5 | 59.8    | 331     |
| B50R_100_100_ | 49.5    | 73.5  | -9.0  | 74.0    | 353     |
| B75R_100_100_ | 48.9    | 69.3  | 12.9  | 70.4    | 10      |



vedere dei file simili: <http://130.149.60.45/~farbmetrik/RI22/RI22L0N1.TXT/.PS>  
 informazioni tecniche: <http://www.ps.bam.de> o <http://130.149.60.45/~farbmetrik>

TUB iscrizione: 20130201-RI22/RI22L0N1.TXT/.PS  
 la domanda per la misura di stampa di display

TUB materiale: code=rhd1da

4-003030-L0 RI220-7N

grafico TUB-RI22; codice di tinte: H\*\_ =B25R\_  
 grafico conformemente a DIN 33872, 3D=0, de=0, sRGB

immettere: rgb/cmyk -> rgb/cmyk  
 uscita: nessun cambiamento