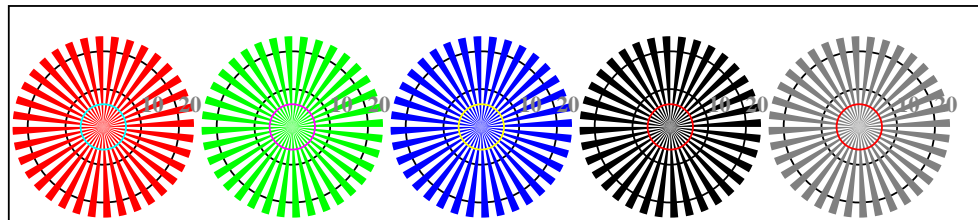


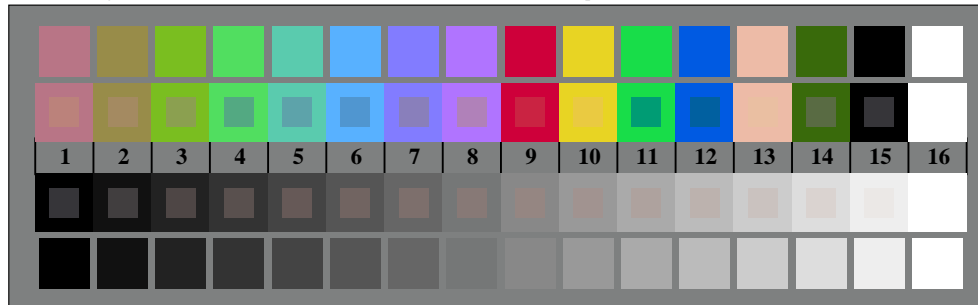


RF970-3, Fig. D1W-: le motif fleuri, 14 CIE test couleurs et 2 + 16 gris étapes (sf); PS 4 colorimage

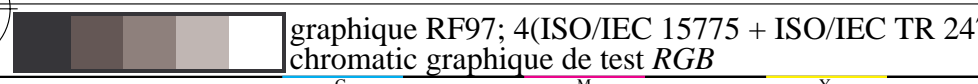


radial callebotis W-R_ radial callebotis W-G_ radial callebotis W-B_ radial callebotis W-N radial callebotis W-Z

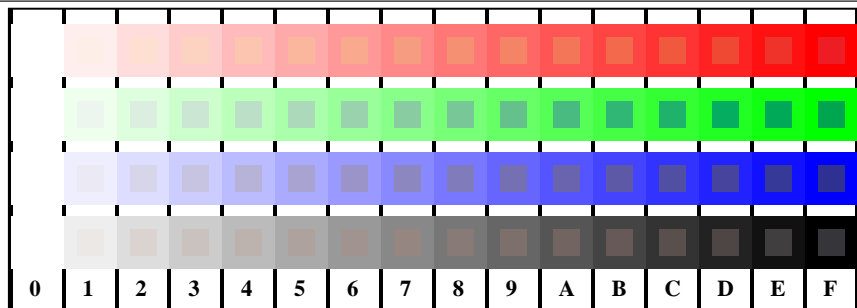
RF970-5, Fig. D2W-: radial callebotis W-R_; W-G_; W-B_; W-N; PS operator rgb->rgb_setrgbcolor



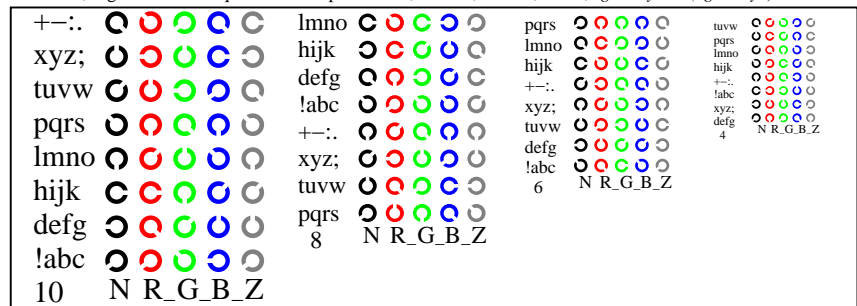
RF970-7, Fig. D3W-: 14 CIE test couleurs et 2 + 16 gris étapes (sf); rgb/cmy0 set(rgb/cmyk)color



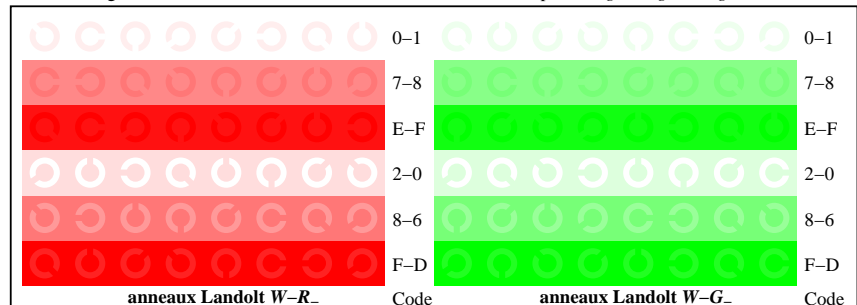
graphique RF97: 4(ISO/IEC 15775 + ISO/IEC TR 24705) entrée: rgb/cmyk -> w/rgb/cmyk_ chromatic graphique de test RGB sortie: aucun changement



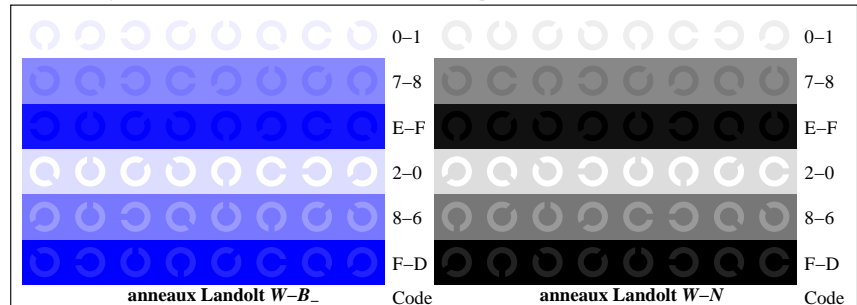
RF971-1, Fig. D4W-: 16 équidistants étapes W-R_; W-G_; W-B_; W-N; rgb/cmy0 set(rgb/cmyk)color



RF971-3, Fig. D5W-: code et Landolt anneauN; R_; G_; B_; Z; PS operator rgb->rgb_setrgbcolor



RF971-5, Fig. D6W-: anneaux Landolt W-R_; W-G_; PS operator rgb_setrgbcolor



RF971-7, Fig. D7W-: anneaux Landolt W-B_; W-N; PS operator rgb_setrgbcolor

