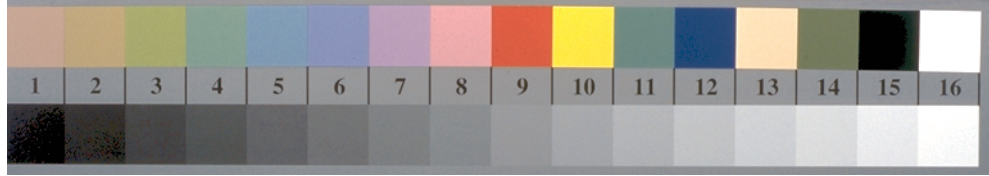
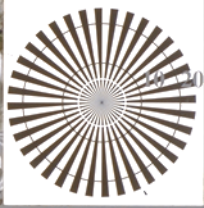
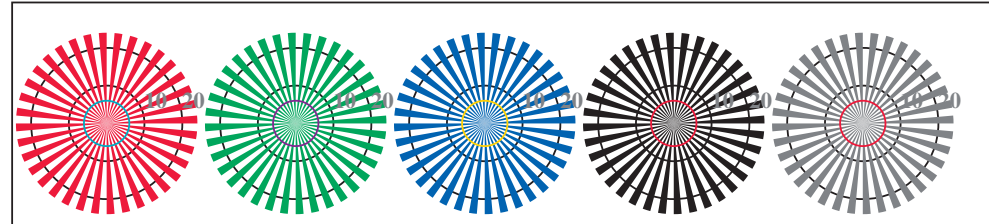


http://130.149.60.45/~farbmetrik/RF97/RF97LOFP.PDF /PS; linearisation 3D
F: linearisation 3D RF97/RF97LF30FP.DAT dans fichier (F), page 2/2

voir des fichiers similaires: <http://130.149.60.45/~farbmetrik/RF97/RF97.LFP.PDF> /PS
Informations techniques: <http://www.ps.bam.de> ou <http://130.149.60.45/~farbmetrik>

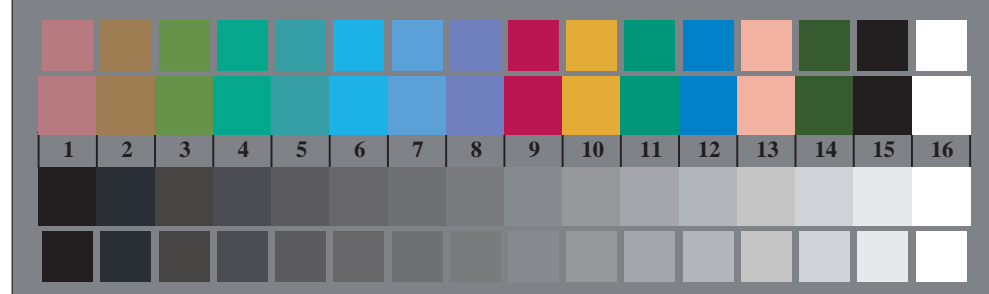


RF970-3, Fig. D1Wde: le motif fleuri, 14 CIE test couleurs et 2 + 16 gris étapes (sf); PS 4 colorimage



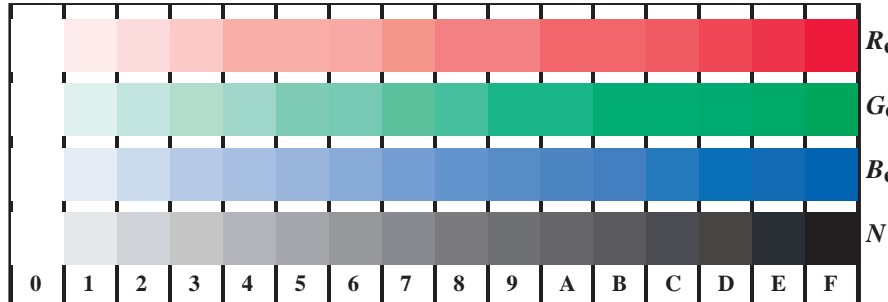
radial callebotis W-Re radial callebotis W-Ge radial callebotis W-Be radial callebotis W-N radial callebotis W-Z

RF970-5, Fig. D2Wde: radial callebotis W-Re; W-Ge; W-Be; W-N; PS operator rgb->rgbde setrgbcolor

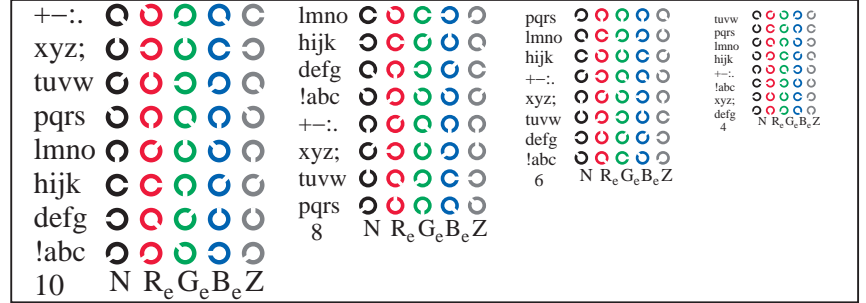


RF970-7, Fig. D3Wde: 14 CIE test couleurs et 2 + 16 gris étapes (sf); rgb/cmy0->rgbde setrgbcolor

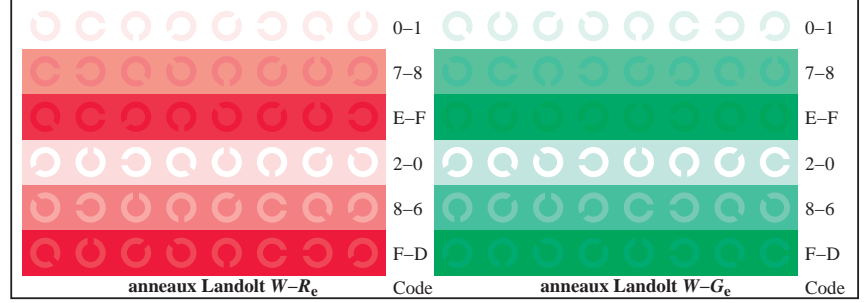
graphique RF97; 4(ISO/IEC 15775 + ISO/IEC TR 24705) entrée: rgb/cmyk -> rgbde
chromatic graphique de test RGB, 3D=1, de=1, cmyk* sortie: linearisation 3D selon cmyk*_de



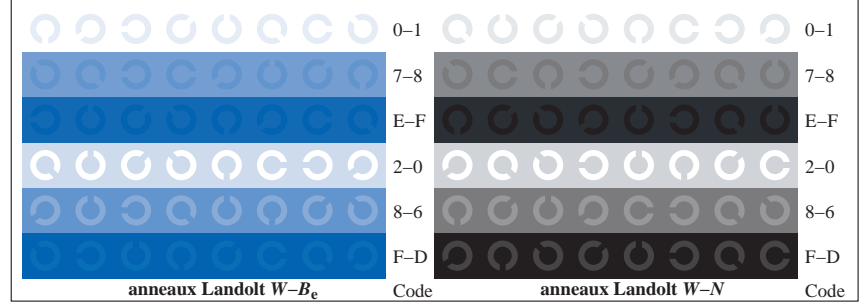
RF971-1, Fig. D4Wde: 16 équidistants étapes W-Re; W-Ge; W-Be; W-N; rgb/cmy0->rgbde setrgbcolor



RF971-3, Fig. D5Wde: code et Landolt anneauN; Re; Ge; Be; Z; PS operator rgb->rgbde setrgbcolor



RF971-5, Fig. D6Wde: anneaux Landolt W-Re; W-Ge; PS operator rgb->rgbde setrgbcolor



RF971-7, Fig. D7Wde: anneaux Landolt W-Be; W-N; PS operator rgb->rgbde setrgbcolor

TUB enregistrement: 20130201-RF97/RF97LOFP.PDF /PS application pour la mesure des sorties sur offset, séparationcmykn6* (CMYK) TUB matériel: code=th4d4a