

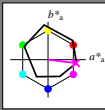
http://130.149.60.45/~farbmetrik/RE35/RE35LONI.TXT /PS; start output
 N: no 3D-linearization (OL) in file (F) or PS-startup (S), page 1/1

Input and Output: Offset Reflective System ORS18a for relative CIELAB hue $h_{ab,a,rel} = h_{ab}/360 = 353/360 = 0.98$

$H^*_e = B50R_$

Data for any device (d) or elementary (e) colour:

HIC^*_e
 hue text for the colours of this page:
 $H^*_e = B50R_$
 triangle lightness T^*



ORS18a; adapted (a) CIELAB data

| name | $L^* = L^*_a$ | a^*_a | b^*_a | $C^*_{ab,a}$ | $h^*_{ab,a}$ |
|---------|---------------|---------|---------|--------------|--------------|
| R_.,Ma | 47.9 | 65.3 | 50.5 | 82.6 | 37 |
| Y_.,Ma | 90.3 | -10.2 | 91.7 | 92.3 | 96 |
| G_.,Ma | 50.9 | -62.8 | 34.9 | 71.9 | 150 |
| C_.,Ma | 58.6 | -30.3 | -45.0 | 54.2 | 236 |
| B_.,Ma | 25.7 | 31.0 | -44.4 | 54.2 | 305 |
| M_.,Ma | 48.1 | 75.2 | -8.3 | 75.7 | 353 |
| N_.,Ma | 18.0 | 0.0 | 0.0 | 0.0 | 0 |
| W_.,Ma | 95.4 | 0.0 | 0.0 | 0.0 | 0 |
| R_.,CIE | 39.9 | 58.7 | 27.9 | 65.0 | 25 |
| Y_.,CIE | 81.2 | -2.8 | 71.5 | 71.6 | 92 |
| G_.,CIE | 52.2 | -42.4 | 13.6 | 44.5 | 162 |
| B_.,CIE | 30.5 | 1.4 | -46.4 | 46.4 | 271 |

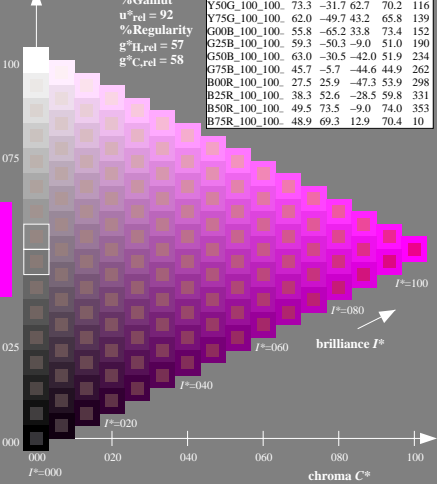
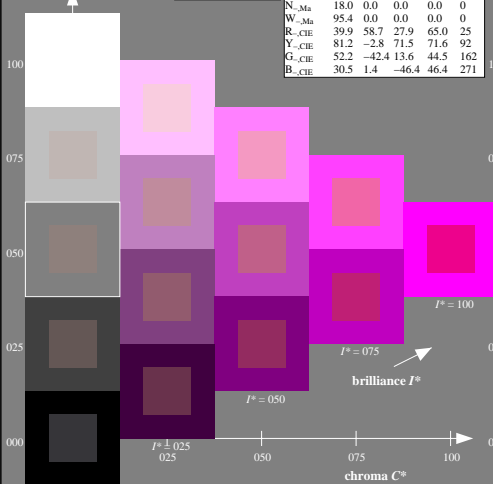
Data for maximum colour (Ma):

$LabCh^*_{-},Ma: 49\ 73\ -9\ 74\ 353$
 $HIC^*_{-},Ma: B50R_100_100_$
 $1.0\ 0.0\ 1.0\ 1.0\ 1.0$

ORS20a; adapted (a) CIELAB data

| H^*_e | $L^* = L^*_a$ | a^*_a | b^*_a | $C^*_{ab,a}$ | $h^*_{ab,a}$ |
|----------------|---------------|---------|---------|--------------|--------------|
| R00Y_100_100_. | 48.4 | 66.1 | 40.2 | 77.3 | 31 |
| R25Y_100_100_. | 56.8 | 48.0 | 50.5 | 69.6 | 46 |
| R50Y_100_100_. | 68.6 | 25.0 | 63.9 | 68.6 | 68 |
| R75Y_100_100_. | 80.6 | 4.8 | 77.2 | 77.3 | 86 |
| Y00G_100_100_. | 90.2 | -9.6 | 88.2 | 88.7 | 96 |
| Y25G_100_100_. | 83.2 | -18.4 | 79.9 | 81.9 | 102 |
| Y50G_100_100_. | 73.3 | -31.7 | 62.7 | 70.2 | 116 |
| Y75G_100_100_. | 62.0 | -49.7 | 43.2 | 65.8 | 139 |
| G00B_100_100_. | 55.8 | -65.2 | 33.8 | 73.4 | 152 |
| G25B_100_100_. | 59.3 | -50.3 | -9.0 | 51.0 | 190 |
| G50B_100_100_. | 63.0 | -30.5 | -42.0 | 51.9 | 234 |
| G75B_100_100_. | 45.7 | -5.7 | -44.6 | 44.9 | 262 |
| B00R_100_100_. | 27.5 | 25.9 | -47.3 | 53.9 | 298 |
| B25R_100_100_. | 38.3 | 52.6 | -28.5 | 59.8 | 331 |
| B50R_100_100_. | 49.5 | 73.5 | -9.0 | 74.0 | 353 |
| B75R_100_100_. | 48.9 | 69.3 | 12.9 | 70.4 | 10 |

triangle lightness T^*
 %Gamut $u^*_{rel} = 92$
 %Regularity $g^*_{H,rel} = 57$
 $g^*_{C,rel} = 58$



see similar files: <http://130.149.60.45/~farbmetrik/RE35/RE35.HTM>
 technical information: <http://www.ps.bam.de> or <http://130.149.60.45/~farbmetrik>

TUB registration: 20150701-RE35/RE35LONI.TXT /PS
 application for measurement of offset print output

TUB material: code=thata

1-003030-L0 RE350-7N

TUB-test chart RE35; hue code: $H^*_e = B50R_$
 Test chart according to DIN 33872, 3D=0, de=0, cmyk

input: $rgb/cmyk \rightarrow rgb/cmyk$
 output: no change