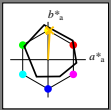


http://130.149.60.45/~farbmetrik/QN28/QN28L0N1.TXT /PS; start output  
N: ingen 3D-linearisering (OL) i fil (F) eller PS-startup (S), side 1/1

Input og output: Offset-Reflektiv-System ORS18a for relativ CIELAB fargetone  $h_{ab,a,rel} = h_{ab}/360 = 86/360 = 0.24$

Data for ethvert apparat (d) eller elementærfarge (e):

$HIC^*_e$   
fargetonetekst for fargene på denne siden:  
 $H^*_e = R75Y_e$   
trekantslyshet  $T^*$



**ORS18a; adapterte (a) CIELAB data**

navn	$L^* = L^*_a$	$a^*_a$	$b^*_a$	$C^*_{ab,a}$	$h^*_{ab,a}$
R <sub>-Ma</sub>	47.9	65.3	50.5	82.6	37
Y <sub>-Ma</sub>	90.3	-10.2	91.7	92.3	96
G <sub>-Ma</sub>	50.9	-62.8	34.9	71.9	150
C <sub>-Ma</sub>	58.6	-30.3	-45.0	54.2	236
B <sub>-Ma</sub>	25.7	31.0	-44.4	54.2	305
M <sub>-Ma</sub>	48.1	75.2	-8.3	75.7	353
N <sub>-Ma</sub>	18.0	0.0	0.0	0.0	0
W <sub>-Ma</sub>	95.4	0.0	0.0	0.0	0
R <sub>-CIE</sub>	39.9	58.7	27.9	65.0	25
Y <sub>-CIE</sub>	81.2	-2.8	71.5	71.6	92
G <sub>-CIE</sub>	52.2	-42.4	13.6	44.5	162
B <sub>-CIE</sub>	30.5	1.4	-46.4	46.4	271

Data for maksimalfarge (Ma):

$LabCh^*_{-Ma}$ : 80 4 77 77 86

$HIC^*_{-Ma}$ : R75Y\_100\_100\_

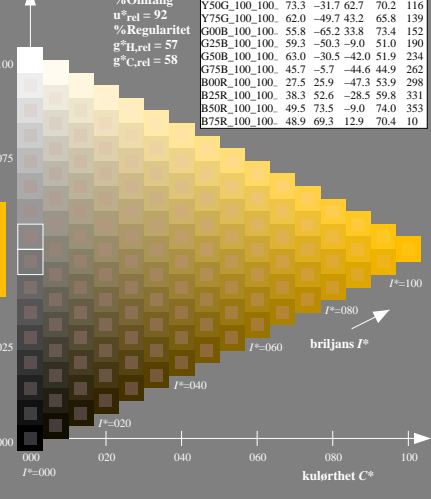
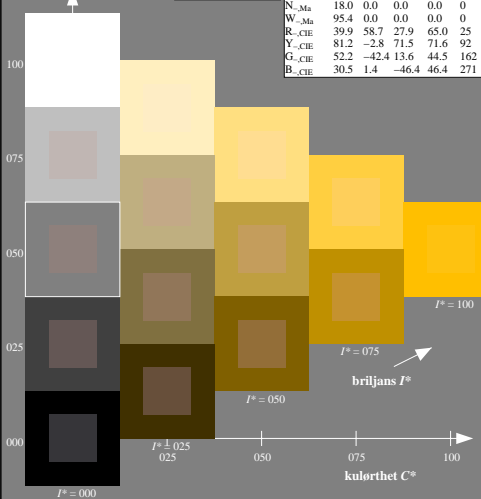
$rgbic^*_{-Ma}$ : 1.0 0.76 0.0 1.0 1.0

trekantslyshet  $T^*$

%Omfang  
 $u^*_{rel} = 92$   
%Regularitet  
 $g^*_{H,rel} = 57$   
 $g^*_{C,rel} = 58$

**ORS20a; adapterte (a) CIELAB data**

$H^*_e$	$L^* = L^*_a$	$a^*_a$	$b^*_a$	$C^*_{ab,a}$	$h^*_{ab,a}$
R00Y_100_100_	48.4	66.1	40.2	77.3	31
R25Y_100_100_	56.8	48.0	50.5	69.6	46
R50Y_100_100_	68.6	25.0	63.9	68.6	68
R75Y_100_100_	80.6	4.8	77.2	77.3	86
Y00G_100_100_	90.2	-9.6	88.2	88.7	96
Y25G_100_100_	83.2	-18.4	79.9	81.9	102
Y50G_100_100_	73.3	-31.7	62.7	70.2	116
Y75G_100_100_	62.0	-49.7	43.2	65.8	139
G00B_100_100_	55.8	-65.2	33.8	73.4	152
G25B_100_100_	59.3	-50.3	-9.0	51.0	190
G50B_100_100_	63.0	-30.5	-42.0	51.9	234
G75B_100_100_	45.7	-5.7	-44.6	44.9	262
B00R_100_100_	27.5	25.9	-47.3	53.9	298
B25R_100_100_	38.3	52.6	-28.5	59.8	331
B50R_100_100_	49.5	73.5	-9.0	74.0	353
B75R_100_100_	48.9	69.3	12.9	70.4	10



se følgende filer: <http://130.149.60.45/~farbmetrik/QN28/QN28.HTM>  
teknisk informasjon: <http://www.ps.bam.de> eller <http://130.149.60.45/~farbmetrik>

TUB registrering: 2015/07/01-QN28/QN28L0N1.TXT /PS  
anvendelse for måling av offsettrykk output

TUB-material: code=matata

5-003031-L0 QN280-7N

TUB-prøveplansje QN28; farbetoneplan:  $H^*_e=R75Y_e$   
prøveplansje infølge DIN 33872, 3D=0, de=0,  $cm_y0$

input:  $rgb/cmyk \rightarrow rgb/cmyk$   
output: ingen endring

